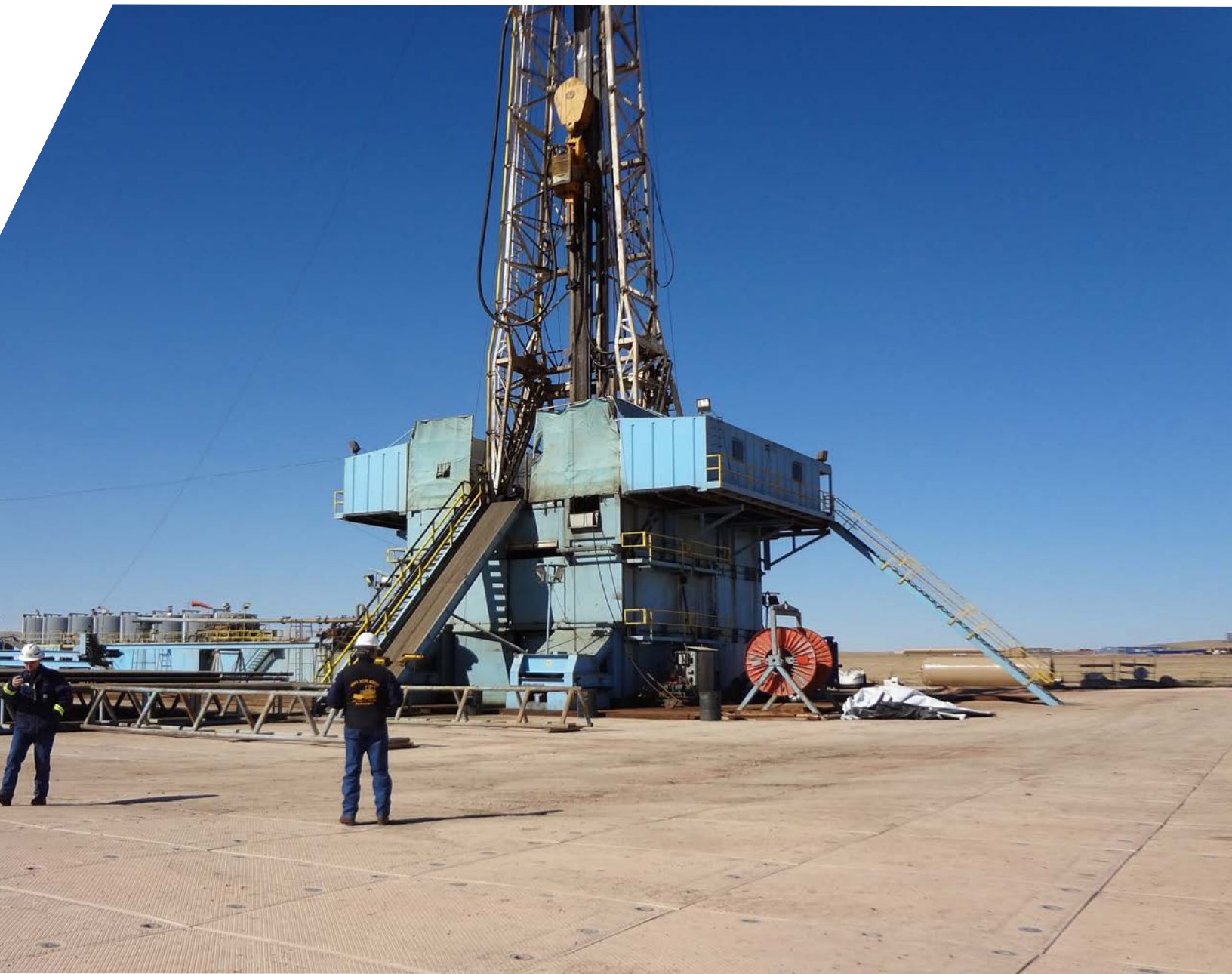


**PROTECTING THE WORLD  
FROM THE GROUND UP.**

# **Composite Matting Solutions for the Oil & Gas Industry**





## PROTECT YOUR JOB SITE, EQUIPMENT AND PERSONNEL WITH SIGNATURE'S REUSABLE COMPOSITE MATTING SYSTEMS

### Stay on Schedule with a Safe, Stable and Clean Work Site

Signature Systems understands your daily challenges: tight scheduling that can't wait for weather delays, higher project costs, labor shortages and changing environmental and safety requirements.

We engineer and manufacture industry-leading construction matting solutions for any size construction site to meet your critical needs.

- ✓ Keep your personnel safe with stable working platforms and staging areas.
- ✓ Build temporary roadways and provide reliable access to remote worksites.
- ✓ Spend less time and money on site preparation and remediation.
- ✓ Avoid costly repairs by protecting your equipment against the environment.
- ✓ Reuse across multiple worksites without fear of cross-contamination.







Heavy-duty Work Platforms



Staging Areas for  
Vehicles and Equipment



Portable Ground Protection  
for Vehicle Access



## MEGADECK® HD+

WITH MDX CONNECTION SYSTEM

Heavy-duty temporary  
roadways, work platforms  
and laydown yards



ALSO AVAILABLE WITH S<sup>2</sup> LOCK™ CONNECTION SYSTEM



**SIZE:**

7.5 ft L x 14 ft W x 4 in H  
(2.3 m x 4.3 m x 10.16 cm)

**WEIGHT:**

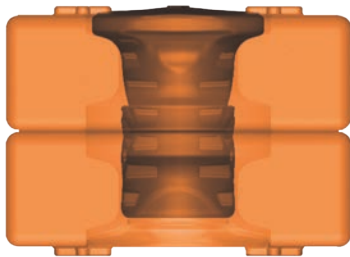
1,025 lbs. ea. (464.9 kg ea.)

**LOAD CAPACITY:**

4,500 tons / 600 psi

**40' ISO HC:**

42 mats



## MDX PINNING SYSTEM

LOCKING SYSTEM FOR  
MEGADECK® HD+

Signature Systems' advanced MDX pin features a high strength, aluminum alloy pin core encased in a strong, highly engineered plastic case that facilitates faster and easier installation while handling the most extreme loads and impacts.

### COMPOSITE

10-12 years

Does not absorb water  
and contaminants

MegaDeck® HD+ 42  
SignaRoad® 90

vs.

### LIFESPAN

### ENVIRONMENTAL IMPACT

**MATS PER  
TRUCKLOAD**

### WOOD

3-5 years

Absorbs water  
and contaminants

18-21 2 & 3-plywood mats  
45 Traditional mats



Trackout System for  
Site Entrances and Exits



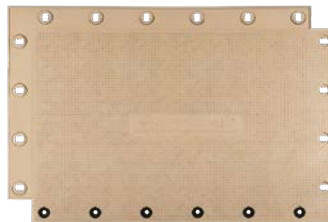
Heavy-haul Accessways



Temporary Roadways for Work  
Crews and Vehicles

## SIGNAROAD®

Quick installing roadway and  
platform access matting for  
vehicles and equipment



**SIZE:**

6.8 ft L x 10 ft W x 2.5 in H  
(2.1 m x 3 m x 6.4 cm)

**WEIGHT:**

496 lbs. ea. (225 kg ea.)

**LOAD CAPACITY:**

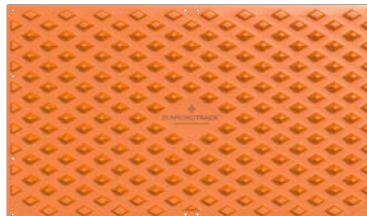
1,950 tons / 400 psi

**40' ISO HC:**

90 mats

## DIAMONDTRACK™

Trackout system for minimizing  
the amount of dirt or sediment  
tracked from job sites



**SIZE:**

7 ft L x 12 ft W x 3.75 in H (84 ft<sup>2</sup>)  
2.13 m L x 3.66 m W x 9.53 cm H (7.8 m<sup>2</sup>)

**DIAMOND HEIGHT:**

2.875 in (7.3 cm<sup>2</sup>)

**WEIGHT:**

435 lbs (197.3 kg)

**LOAD CAPACITY:**

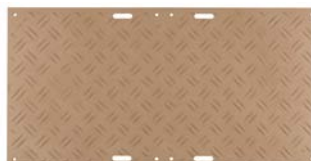
45,000 lbs per diamond / 800 psi

**40' ISO HC:**

Up to 96 mats

## DURADECK®

Light-duty matting for  
near-instant access, roadway  
and equipment support



**SIZE:**

4 ft L x 8 ft W x .5 in H  
(1.22 m x 2.4 m x 1.3 cm)

**WEIGHT:**

87 lbs. ea. (40 kg ea.)

**LOAD CAPACITY:**

Up to 80 tons / 200 psi

**40' ISO HC:**

500 mats





Provide Safe Working  
Conditions for Personnel

Stable Work Surfaces Over  
Challenging Ground Conditions

Enhanced Tread Design  
Provides Superior Traction

## STRENGTH IN BUSINESS

# Signature Has Been a Global Leader in Composite Mats and Ground Protection Systems for Over 25 Years

### IN-HOUSE ENGINEERING

In-house engineering and manufacturing to ensure superior product performance

### LATEST TECHNOLOGIES

Uses latest technologies for energy-efficient manufacturing processes and sustainability

### SUSTAINABLE

Product lines provide customers with a sustainable ground protection solution



### ESTABLISHED REPUTATION

Established reputation as a trusted partner to rental houses worldwide



### OUR COMMITMENT TO ESG

Integrated Environmental, Social, and Governance into every aspect of our business



### LARGE AFTERMARKET

Large aftermarket support team is committed to customer success and exceptional service



**SIGNATURE SYSTEMS  
RECYCLING PROGRAM**  
VERIFIED BY AN INDEPENDENT LAB

### RECYCLING PROGRAM

Signature has developed a verified Recycling Program for end of life products as part of our commitment to sustainability.







# SIGNATURE SYSTEMS

Protecting the world from the ground up.



US +1 972-684-5736 | UK +44 1642 744990

[signature-systems.com](http://signature-systems.com)