



# **EVDirect Phase 4 Release Notes**

1<sup>st</sup> September 2021





## Summary

At EV, we are constantly looking to improve the functionality of our solutions and to improve the financial education that we can offer to consumers.

We have 4 phases planned to enhance several of our EVDirect solutions. This fourth phase focusses on the following solutions:

- EVDirect Retirement Architect
- General Tool Improvements

These updates have been released into our Test environment on 1<sup>st</sup> September and, once all 4 initial phases are complete, we will be working closely with our clients to release into Production environments. These notes provide further details on this phase.

The updates can be accessed in Test by using the following link: [ev.uk/guidance-community-access](https://ev.uk/guidance-community-access)

All communications regarding these phases within the EV Innovation Community will be sent from [davidmcdonald@ev.uk](mailto:davidmcdonald@ev.uk) – please let us know if you have any questions or need any help with the new features.



# Updates

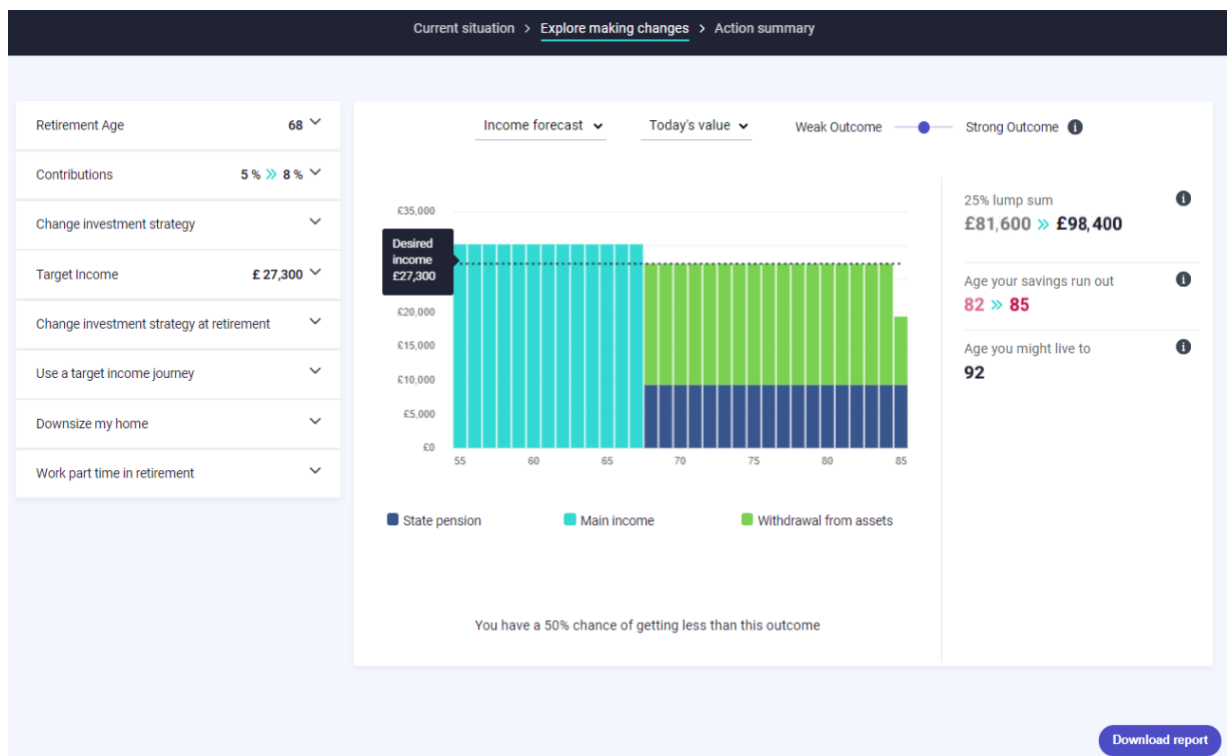
## EVDirect Retirement Architect

The focus of this fourth phase release has been developing the remaining two sections of Retirement Architect; the 'Explore making changes' and 'Action Summary' tabs.

The 'Explore making changes' tab has undergone a full rebrand and layout update to improve the useability.

Including:

- The 'current' and 'revised' summary values are now displayed in the 'retirement age', 'contributions' and 'target income' accordion headers, informing the user of their selections without having to open each accordion.
- Re-styling how the 'current' and 'revised' values on the right-hand side are displayed, making it more obvious to the user of their new proposed situation.
- Additional educational help text throughout, further enhancing the user journey within this tab.
- In Retirement Architect, the 'Tax deducted from lump sum at age...' section is now conditional; this section will only appear in the tool if the tax amount is greater than £0. This simplifies the information displayed in the tool for users that are taking up to 25% lump sum.





The 'Action Summary' tab has undergone a full rebrand and layout update to improve the useability.

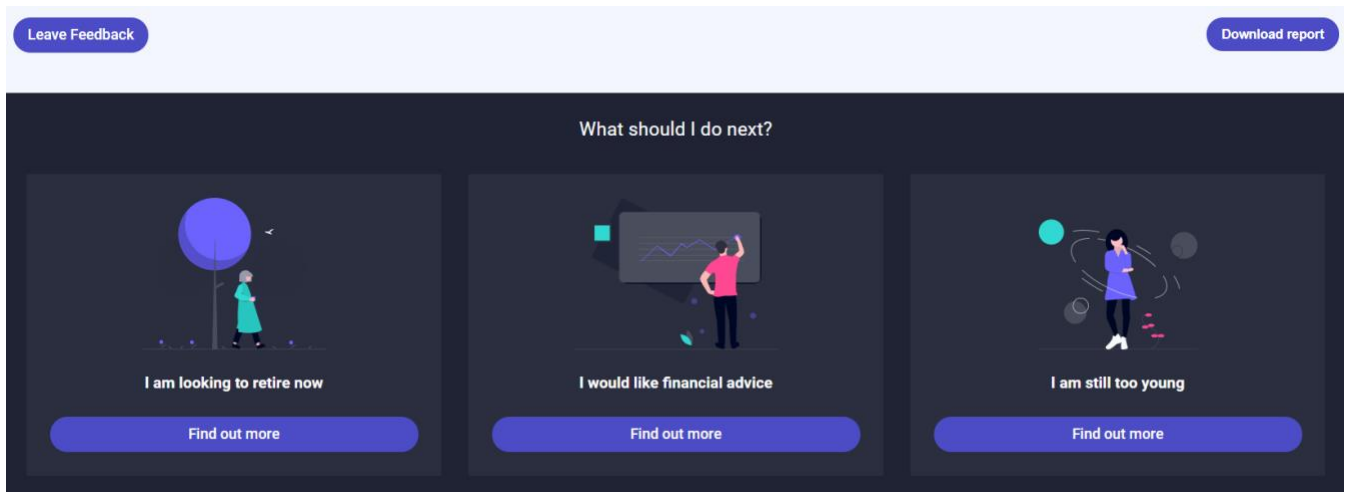
Including:

- Implementing a configurable 'How can I make this change?' button & modal for each section, explaining to the user how they can action any of their changes made in the 'Explore making changes' tab.
- Addition of a Feedback modal button where the user can submit any feedback they have regarding the tool which will be considered for future releases.
- Inclusion of a 'Next steps' section, providing the user with a detailed understanding of what actions they should consider next.

The screenshot displays the 'Action Summary' page with a breadcrumb trail: 'Current situation > Explore making changes > Action summary'. A message at the top states: 'Now you have explored making changes understand how to action these changes. Click on How do I make this change to find out how.' The page is divided into three sections, each with a numbered header and a 'How can I make this change?' button.

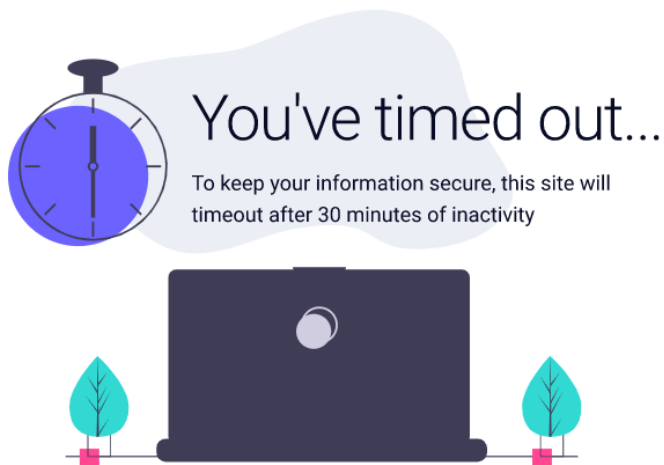
- 1 Retirement age**  
68 **>>** 72  
Current Revised  
[How can I make this change?](#)
- 2 Personal contributions**  
Increase personal contributions  
5% (£162.50) **>>** 8% (£260)  
Current Revised  
Employer monthly contributions  
0% (£0)  
Total monthly contributions: 8% (£260)  
[How can I make this change?](#)
- 3 Pre-retirement investment strategy**  
Change your pre-retirement investment strategy  
6 - Moderate **>>** 7 - Low end of Moderate to Adventurous  
Current Revised  
[How can I make this change?](#)

At the bottom of the page, there are two buttons: 'Leave Feedback' and 'Download report'.



## EVDirect - All Tools

General improvements across all tools include a re-brand of our loading spinner and time out message.





## EVDirect - Income Strategy

The user's income strategy outcome risk score image has been corrected so it no longer continuously loops.

## EVDirect – Retirement Options

We have made a few updates to the 'Investment strategy' question in 3in1 for both Retirement Snapshot & Architect which include:

- Re-styled the 'default fund' graphic which depicts the typical allocations of a lifestyle fund over time until retirement age.
- Removed the asset allocation pie chart visual for each risk rated fund.

