

Pennsylvania BEAUTY

A husband-wife team build
a magical 2,200-square-foot
home for future retirement.

BY BRIDGET MCCREA,
PHOTOGRAPHY BY RICK LEE,
COURTESY OF APPALACHIAN
LOG STRUCTURES

MADE FROM KNOBBED WOOD, THE UNIQUE FURNITURE
WAS BUILT BY AN AMISH CONTRACTOR IN MONTANA.
THE FIREPLACE, SEEN HERE FROM THE OPPOSITE SIDE,
IS MADE FROM MANUFACTURED STONE AND WAS
CUSTOM-ORDERED FROM WISCONSIN.



ABOVE: FEATURING COMMERCIAL APPLIANCES, THE OPEN KITCHEN IS A GREAT PLACE FOR ENTERTAINING GUESTS AND GIVES THE GREAT ROOM AN OPEN AND AIRY FEEL. PAIRED WITH GRANITE COUNTERTOPS, THE KITCHEN CABINETS ARE MADE FROM HICKORY AND CAME FROM A LUMBERYARD IN CHARM, OHIO.

OPPOSITE: THE BEAUTIFUL, DOUBLE-SIDED FIREPLACE IS THE ANCHOR OF THE GREAT ROOM, AND IT BRINGS THE LIVING ROOM, DINING ROOM, AND KITCHEN TOGETHER.

Tucked away on 20 acres of land near the town of Vanderbilt, Pennsylvania, sits a custom-made log cabin that incorporates unique architectural elements and looks out over a beautiful landscape that spans miles. From the cabin's upper deck, homeowners Bob and Lisa Reinhold spend time watching deer, bears, rabbits, and turkeys gallivant around their property. With 75% of their lot being wooded, this home is an undisputable slice of rural countryside.

The Reinholds were living in Cleveland when their dreams of owning a log home began to take shape. "We always wanted to return to the Pittsburgh area," says Lisa, "where our families are from." Initially, they were building the home for future retirement, but after making some job arrangements they decided to move in as soon as it was ready. A commercial pilot, Bob was retiring in about a year-and-a-half, and the pair was looking forward to starting a new phase of life.

The Reinholds broke ground on their 2,200-square-foot home around Thanksgiving 2014. Supplied by Appalachian Log Struc-

tures out of Ripley, West Virginia, the logs arrived on December 20, 2015—the perfect Christmas present for the Reinholds, who moved in the following May.

Prior to building their home, the pair visited a wide variety of log homes and attended various log-home shows. "In the end, we knew exactly what we wanted in our home," says Lisa, adding that they chose Appalachian Log Structures after seeing its log system and the different home styles the company offered. "Plus, they weren't too far away from us, which we liked," she says.

The Reinholds decided on a one-level home with a loft for Bob's home office. The two-car attached garage with a walkway includes a pantry on the right and a laundry room and small powder room on the left. With two bedrooms and two-and-a-half bathrooms, the home provides the perfect amount of room for the couple—with plenty of room for visiting family members and guests.

The Reinholds took a hands-on approach to the build, incor-





THE OWNERS DECIDED CARPET WOULD BE IDEAL IN THE BEDROOMS, MAKING GETTING OUT OF BED IN THE MORNING A LITTLE MORE COMFORTABLE (PLUS, THE UNDER-FLOOR, TUBED HEATING SYSTEM ENSURES THAT THE FLOORS WILL ALWAYS BE WARM ON A WINTER DAY).

porating all the elements that they desired and, in many cases, handling both the design and construction of those elements. “We had a lot of say when it came to our home’s features and specifications,” says Lisa, who wanted a large pantry, an expansive walk-in closet in the master suite, and pocket doors situated throughout the house. Lisa, who was tired of “almost burning herself” every time she reached over the stove to use her microwave, also wanted an under-the-counter microwave. She got her microwave, along with all commercial-grade appliances, including a six-burner gas stove. With these and other design elements in mind, Lisa drew up the floorplan, presented it to Appalachian Log Structures, and then hired Walnut Valley Log Homes, Sugar Creek, Ohio, to bring those wishes into reality.

Once Walnut Valley Log Homes finished its part of the building process, the industrious homeowners took over and finished

most of the interior on their own. Bob did all the electrical and plumbing work; the husband-wife team worked together to put up the wood siding inside; and Lisa stained everything but the great room.

The home utilizes well water, propane heat, and radiant-heat flooring that relies on tubing running under the floor. Made by Radiantec of St. Johnsbury, Vermont, this setup ensures a nice, warm floor on chilly winter days. The roof incorporates two different design systems: a center section made from standard-timber frame (with a structural support, beams, and a tongue-and-groove ceiling) and flat trusses for the garage and bedrooms. “We’re seeing more and more requests for this,” says Dorie Workman, Appalachian’s VP of marketing, “and especially with single-floor plans.”

One of the home’s most breathtaking features is a double see-through fireplace that serves as a focal point in the great room.

“When you walk into the great room, there’s a section with the prow and a full glass wall, which is flooded with sunlight,” says Workman. “They also have a beautiful half-log staircase going up to the office loft.”

Lisa and Rob say they’re thrilled they built a log home. Lisa’s tip for designing a log home is to fit your style and your own personal needs, but also think about the future. “When I designed the house, that’s what I did,” says Lisa. “We’re older and we only needed two bedrooms, but we made provisions for a future sale and made sure the home was already coded for adding a bedroom and private bath in the basement.” They also wanted a walkout basement that would accommodate future expansion, if so desired.

The Reinholds’ plan for the future is to continue enjoying the scenery from their home’s upper deck, where they watch deer, bears, and turkeys—the plan is just to do it more often. ❄️



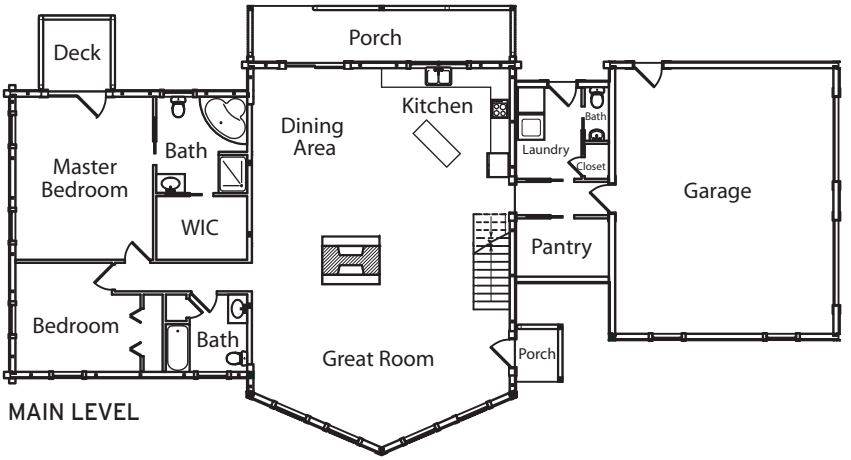
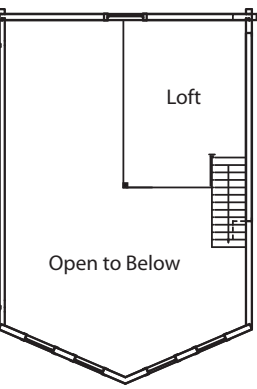
TOP: THE MASTER BATHROOM SHOWCASES A ONE-OF-A-KIND ETCHED CUSTOM MIRROR, A LARGE WALK-IN SHOWER, AND CERAMIC FLOORING.

ABOVE: BOB’S LOFT, COMPLETE WITH MODEL AIRCRAFT, MAPS, BOOKS, AND OTHER ESSENTIALS THAT ANY PILOT WOULD LOVE, SITS ABOVE THE GREAT ROOM. AN INTRICATE WOOD STAIRCASE LEADS UP TO THIS SECOND-FLOOR HIDEAWAY.



Log home producer: Appalachian Log Structures, Ripley, West Virginia
 Builder: Walnut Valley Log Homes, Sugar Creek, Ohio
 One-story home, plus loft ✱ Square footage: 2,200
 Bedrooms: 2 ✱ Baths: 2-1/2

LOFT



MAIN LEVEL

TOP: THE UPPER DECK IS PERFECT FOR WATCHING WILDLIFE AND ENJOYING FRESH AIR, WHILE THE WALKOUT FROM THE BASEMENT FLOOR SERVES AS A RECREATION AND SITTING AREA.
ABOVE: THE OWNERS CHOSE AN A-FRAME FOR THE STRUCTURE BUT INCORPORATED TWO DIFFERENT ROOFING SYSTEMS INTO THE PLANS. THE CENTER SECTION IS A STANDARD TIMBER FRAME SYSTEM, WHILE THE REST IS BASED ON A FLAT TRUSS ROOF SYSTEM.