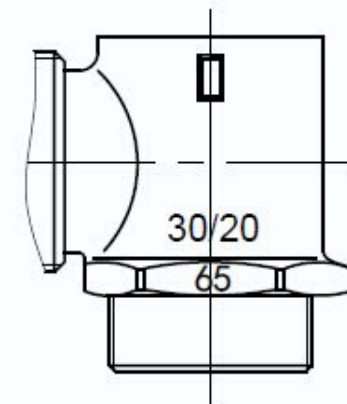
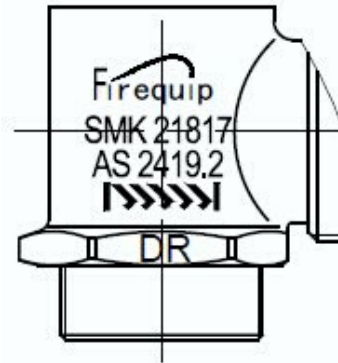
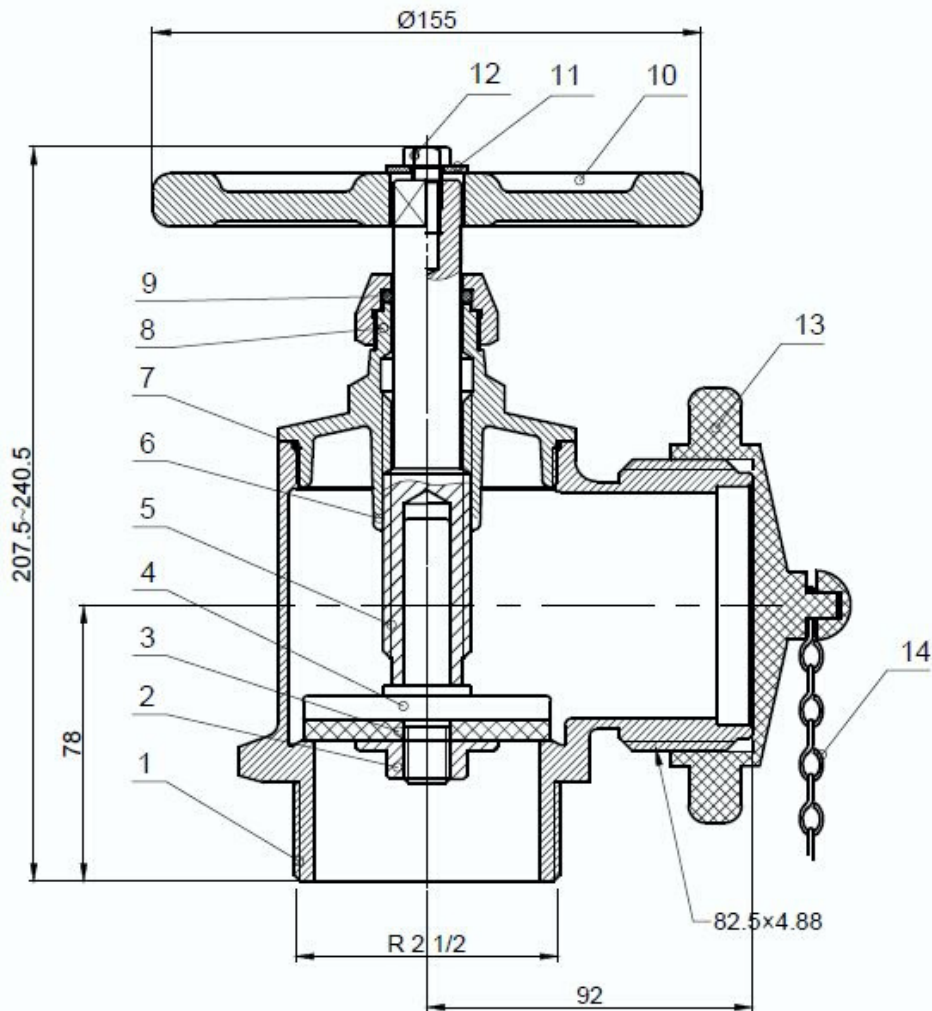


FIREQUIP HYDRANT LANDING VALVE



| ITEM | DRAWING NUMBER | NAME | QTY | MATERIAL | REMARK |
|------|-------------------|----------------|-----|-----------------|----------------------|
| 1 | J280 C9-fm1-01 | Body | 1 | C83600 | |
| 2 | J280-fm1-0 | Nut | 1 | CuZn36Pb2As | |
| 3 | J280 C-fm1-03 | Washer | 1 | NBR (A80° ± 5°) | N3578.80 Ø70xØ12.9x5 |
| 4 | J280 C-fm1-04 | Seat | 1 | CuZn36Pb2As | |
| 5 | J280 C-fm1-05 | Spindle | 1 | CuZn36Pb2As | |
| 6 | J280 C-fm1-06 | Cover | 1 | C83600 | |
| 7 | O-72x1.8-NBR | O-Ring | 1 | NBR | Ø72 xØ1.8 |
| 8 | O-18.5x355-NBR | O-Ring | 1 | NBR | Ø18.5 xØ3.55 |
| 9 | J280A-fm1-07 | Cover Nut | 1 | C37700 | |
| 10 | J280-fm1-09 | Wheel Handle | 1 | QT400-18 | |
| 11 | DP-23x8.2.2x2-304 | Washer | 1 | S 304 | Ø23x8.2x2 |
| 12 | LD-5/16x12.5-304 | Hex Bolt (S14) | 1 | S 304 | 5/16x12.5 |
| 13 | CV-221-05.03 | Cap | 1 | ABS | Black |
| 14 | CV-221-05-04 | Chain | 1 | Q235A | L36 |

Working Pressure: 1400kPa
 Test Pressure 2700kpa
 Temperature Rating -10°~85°



AS2419.2
 CERTIFICATE NUMBER SMK21817