



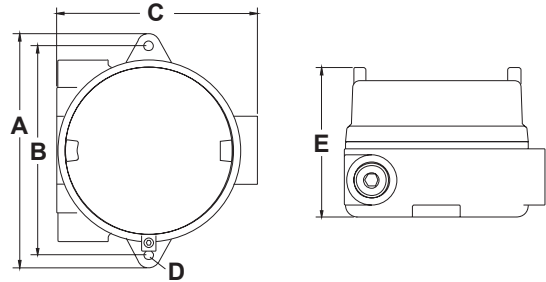
# HAZARDOUS LOCATION GRACEPORT® INSTALLATION GUIDE



M7

## INSTALLATION

GracePorts® are intended to be mounted in or on an enclosure product. Installation should be performed by a qualified technician and adhere to applicable regulatory codes. These devices are for mounting on the flat surface of enclosures having the same type environmental ratings.



## OVERALL & MOUNTING DIMENSIONS INCHES (MM)

HOUSING CODE	A	B	C	D	E
M7	6.14	5.51	5.26	0.25 DIA	3.93

**Warning:** Verify an electrical conductor has been de-energized using an adequately rated test instrument before working on it. Follow appropriate Energy Control (Lockout/Tagout) procedures as per OSHA Subpart S. GracePort® is a registered Trademark of Grace Engineered Products, Inc.  
© Grace Technologies, Inc. All rights reserved. Specifications are subject to change with/without notice.

GP-HLH-IG-EN 2005

1515 East Kimberly Road • Davenport, IA • [www.graceport.com](http://www.graceport.com) • 1.800.280.9517



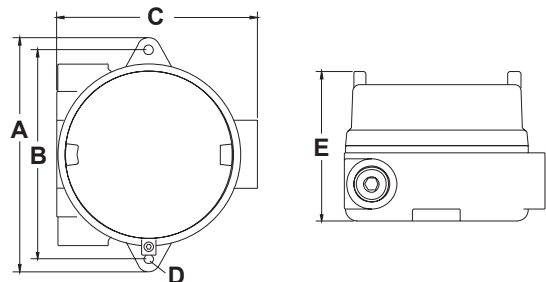
# HAZARDOUS LOCATION GRACEPORT® INSTALLATION GUIDE



M7

## INSTALLATION

GracePorts® are intended to be mounted in or on an enclosure product. Installation should be performed by a qualified technician and adhere to applicable regulatory codes. These devices are for mounting on the flat surface of enclosures having the same type environmental ratings.



## OVERALL & MOUNTING DIMENSIONS INCHES (MM)

HOUSING CODE	A	B	C	D	E
M7	6.14	5.51	5.26	0.25 DIA	3.93

**Warning:** Verify an electrical conductor has been de-energized using an adequately rated test instrument before working on it. Follow appropriate Energy Control (Lockout/Tagout) procedures as per OSHA Subpart S. GracePort® is a registered Trademark of Grace Engineered Products, Inc.  
© Grace Technologies, Inc. All rights reserved. Specifications are subject to change with/without notice.

GP-HLH-IG-EN 2005

1515 East Kimberly Road • Davenport, IA • [www.graceport.com](http://www.graceport.com) • 1.800.280.9517

