

OLYMPIC STEEL

Specialty Metals Market Update

May 2021

IN THIS ISSUE

- Stainless Market Sees More of the Same
- Aluminum Hits Three Year High
- Stainless Imports
- Surcharges
- Aluminum Ingot / Midwest Premium Prior Month Average

Stainless Market Sees More of the Same

Tight supply continues in the stainless market with little relief in sight until later this year when ordered imports begin arriving to suppliers starved for domestic material. Though imports will likely result in slight increases in availability, service centers and manufacturers are already looking to lock in contracts for the first half of 2022.

Limited supply, coupled with elevated surcharges on all stainless types, are keeping prices up. The slight dip in nickel last month has recovered, but chrome remains the prime driver in surcharge pricing.

Aluminum Hits Three Year High

Aluminum continues its climb, most recently hitting a three year high. The upward trend has been driven by a number of factors:

- Strong global demand
- Trade constraints in both the U.S., related to anti-dumping duties in effect for China and 18 other countries, and the European Union, impacted by anti-dumping duties in place against China
- A weakening U.S. dollar
- Anticipated supply reductions and/or disruptions related to new environmental policies going into effect in China

Strong Since 1954

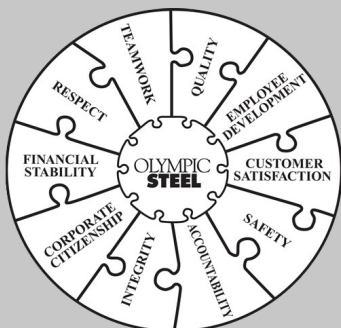


36+ facilities

4.1+ million square feet

324+ pieces of metal processing equipment

Our Values



Buy Smart. We Can Help.

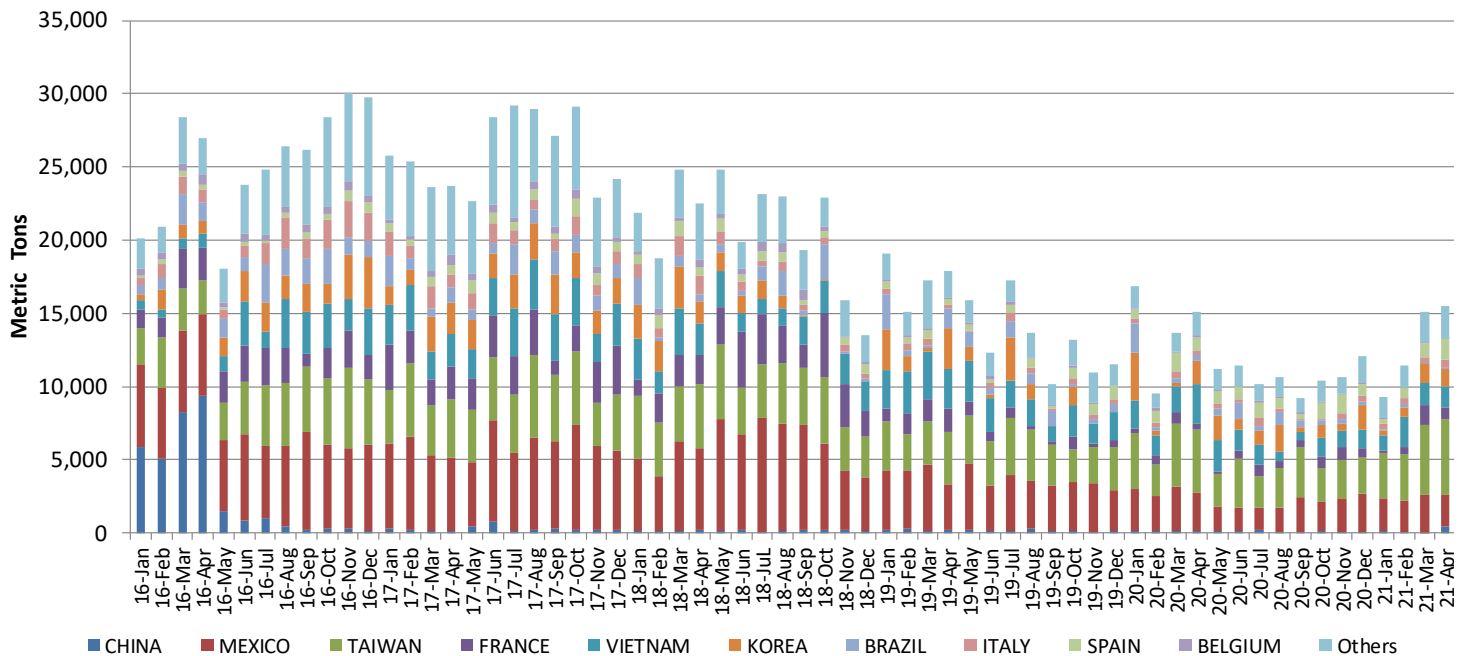
As the stainless and aluminum markets continue to hit new highs and supply remains tight, getting the material you need and making the decision when to buy can be tough.

Let our knowledgeable team help with strategic sourcing. We've got the industry insights and the supplier relationships you need to make the smart buy.



OLYMPICSTEEL

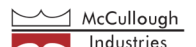
Stainless Steel Flat Imports - 2016 / 2017 / 2018 / 2019 / 2020 / 2021



Monthly Nickel Price



Learn more at olysteel.com



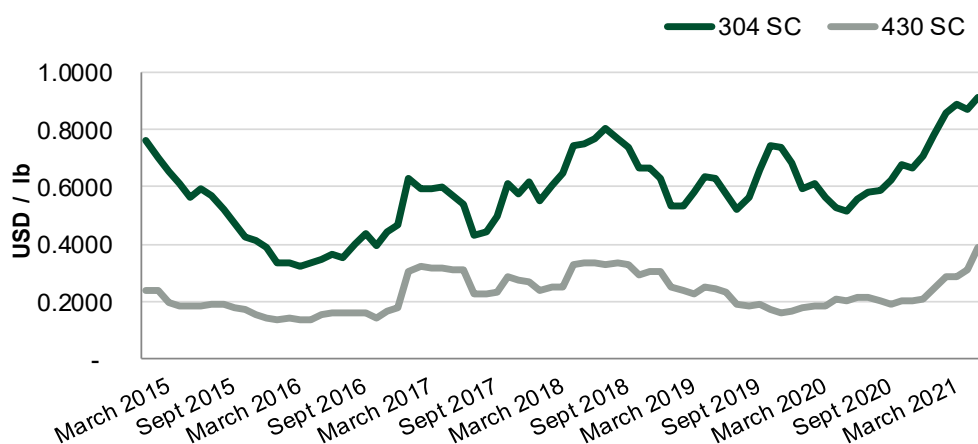
OLYMPICSTEEL

Stainless Steel Surcharge Trends

Month	201	301	304	316L	430
May-21	\$ 0.6647	\$ 0.7740	\$ 0.9139	\$ 1.2048	\$ 0.3861
April-21	\$ 0.6101	\$ 0.7261	\$ 0.8724	\$ 1.2095	\$ 0.3122
March-21	\$ 0.6079	\$ 0.7349	\$ 0.8920	\$ 1.2209	\$ 0.2866
February-21	\$ 0.5829	\$ 0.7103	\$ 0.8592	\$ 1.1447	\$ 0.2866
January-21	\$ 0.5230	\$ 0.6414	\$ 0.7808	\$ 1.0398	\$ 0.2432
December-20	\$ 0.4660	\$ 0.5786	\$ 0.7083	\$ 0.9542	\$ 0.2066
November-20	\$ 0.4414	\$ 0.5469	\$ 0.6672	\$ 0.8906	\$ 0.2030
October-20	\$ 0.4471	\$ 0.5567	\$ 0.6802	\$ 0.9001	\$ 0.2030
September-20	\$ 0.4120	\$ 0.5112	\$ 0.6231	\$ 0.8113	\$ 0.1920
August-20	\$ 0.3971	\$ 0.4859	\$ 0.5870	\$ 0.7652	\$ 0.1993
July-20	\$ 0.4054	\$ 0.4858	\$ 0.5822	\$ 0.7780	\$ 0.2139
June-20	\$ 0.3953	\$ 0.4688	\$ 0.5596	\$ 0.7624	\$ 0.2139
May-20	\$ 0.3671	\$ 0.4330	\$ 0.5166	\$ 0.6972	\$ 0.1993

Month / Month	8.95% ↑	6.60% ↑	4.76% ↑	-0.39% ↓	23.67% ↑
Year / Year	81.07% ↑	78.75% ↑	76.91% ↑	72.81% ↑	93.73% ↑

Note: Stainless surcharges are based upon North American Stainless published figures.



Aluminum & Stainless Value-Add Processing

Precision Slitting
Cutting-to-Length
Precision Blanking
Tension Leveling
Edge Conditioning
Deburring
Skiving
Blanking
Shearing
Polishing
Fabrication
CNC Machining
Plasma / Waterjet Cutting
Saw Cutting
Forming
Rolling
Welding
PVC & Packaging



Learn more at olysteel.com

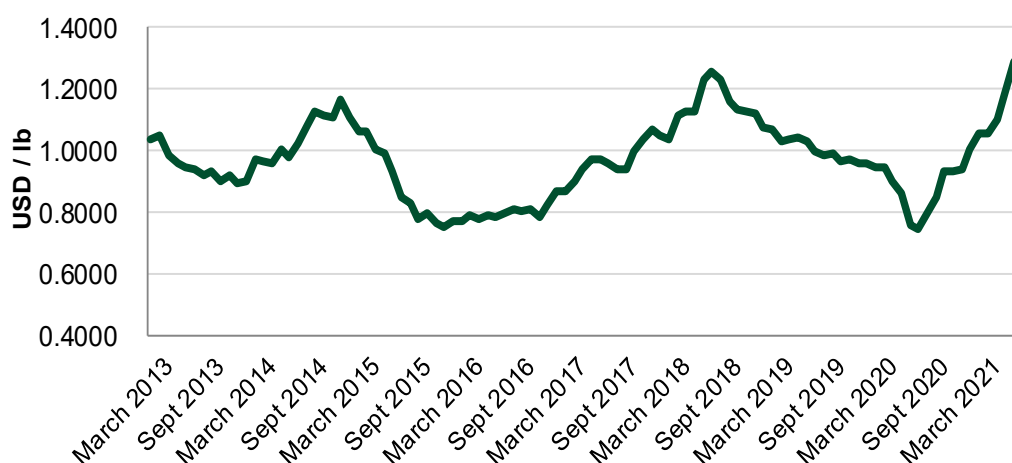


OLYMPICSTEEL

Aluminum Ingot / Midwest Premium Trend

Month	2017	2018	2019	2020	2021
January	\$ 0.8668	\$ 1.0338	\$ 1.0673	\$ 0.9478	\$ 1.0571
February	\$ 0.9027	\$ 1.1123	\$ 1.0282	\$ 0.9440	\$ 1.0586
March	\$ 0.9419	\$ 1.1274	\$ 1.0371	\$ 0.9009	\$ 1.0989
April	\$ 0.9711	\$ 1.1301	\$ 1.0413	\$ 0.8624	\$ 1.1829
May	\$ 0.9732	\$ 1.2333	\$ 1.0282	\$ 0.7588	\$ 1.2887
June	\$ 0.9608	\$ 1.2578	\$ 0.9958	\$ 0.7432	\$ -
July	\$ 0.9382	\$ 1.2330	\$ 0.9829	\$ 0.7953	\$ -
August	\$ 0.9377	\$ 1.1567	\$ 0.9920	\$ 0.8452	\$ -
September	\$ 0.9968	\$ 1.1353	\$ 0.9655	\$ 0.9310	\$ -
October	\$ 1.0386	\$ 1.1240	\$ 0.9719	\$ 0.9330	\$ -
November	\$ 1.0681	\$ 1.1210	\$ 0.9565	\$ 0.9389	\$ -
December	\$ 1.0479	\$ 1.0734	\$ 0.9596	\$ 1.0063	\$ -

Month / Month	8.94%	↑
Year / Year	69.83%	↑



Disclaimer: This publication is for informational purposes only and should not be considered or construed as representations or advice by Olympic Steel, Inc. To the best of our knowledge, the information contained herein is accurate and reliable as of the date of publication; however, it should not be used or relied upon in regard to any specific facts or circumstances. Olympic Steel, Inc. does not assume any liability whatsoever for the accuracy and completeness of this information. Olympic Steel, Inc. makes no representations about the suitability of the information contained herein for any purpose. All information is provided as-is without warranty of any kind. Olympic Steel, Inc. hereby disclaims all warranties with regard to the information. The contents are intended for general information purposes only and may not be quoted or referred to in any other publication or proceeding without the prior written consent of Olympic Steel, Inc., which may be given or withheld at its discretion. To request reprint permission for any Olympic Steel, Inc. publication, please use our 'Contact' form which can be found on our website at <https://olysteel.com/>. The views set forth herein are the personal views of the author and do not necessarily reflect those of Olympic Steel, Inc. This document does not provide advice or recommendations, and under no circumstances should information contained within this document be treated as any form of commercial, investment, legal or other advice.

Learn more at olysteel.com

Specialty Metals LOCATIONS

ACTION STAINLESS & ALLOYS

Dallas, TX
Phone: 972.466.1500

Houston, TX
Phone: 713.671.6075

Kansas City, MO
Phone: 800.749.1881

Rock Hill, SC
Phone: 803.323.6464

San Antonio, TX
Phone: 210.366.3634

Springdale, AR
Phone: 479.750.1881

BERLIN METALS

Hammond, IN
Phone: 800.754.8867

INTEGRITY STAINLESS

Streetsboro, OH
Phone: 440.287.0150

Latrobe, PA
Phone: 724.532.1550

OLYMPIC STEEL

Schaumburg, IL
Phone: 847.584.4000

Detroit, MI
Phone: 313.894.4552

Gary, IN
Phone: 219.359.3900

Winder, GA
Phone: 470.307.3300

Buford, GA
Phone: 470.307.3300

Milford, CT
Phone: 203.878.9381

Minneapolis, MN
Phone: 763.544.7100

Monterrey, Mexico
Phone: +52 (81) 8335-6060