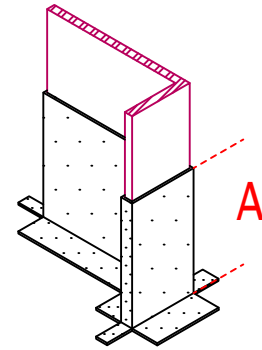
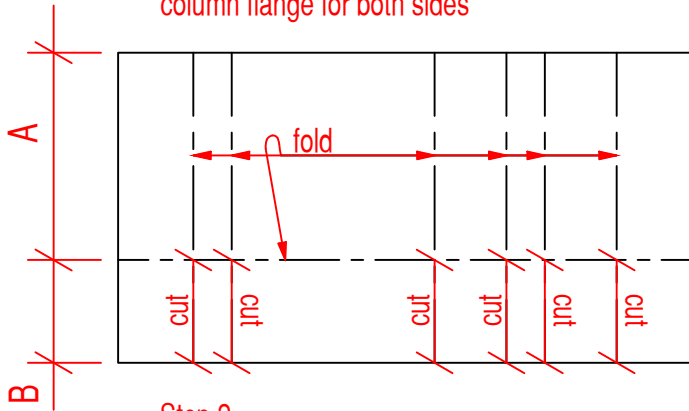


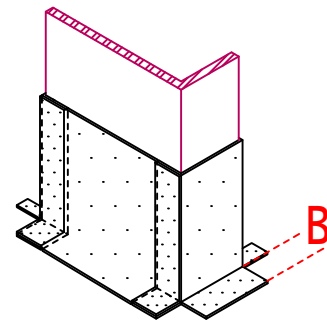
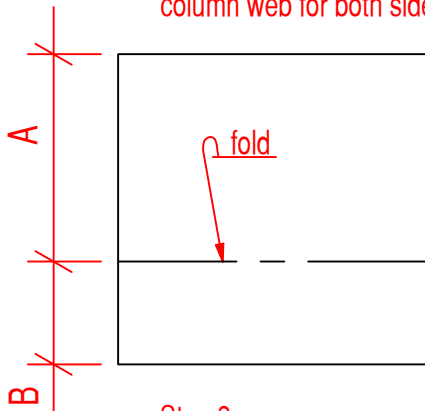
FTR FORTI-LOCK FLEECE PATTERN

A - 8" Min.
 B - 2" Min.
 C - 8" Min.

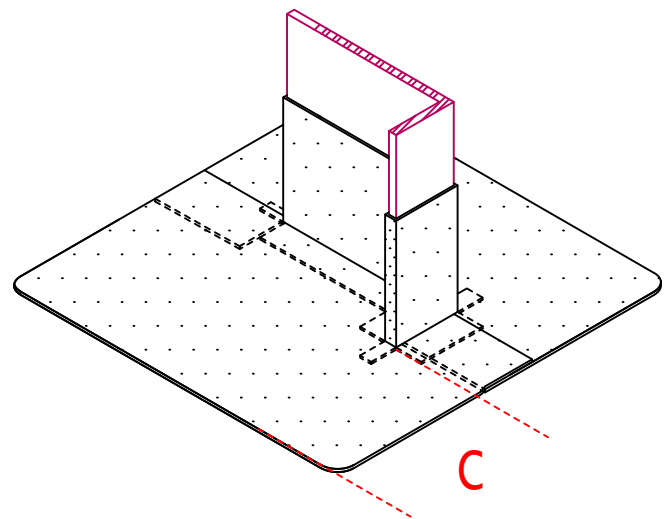
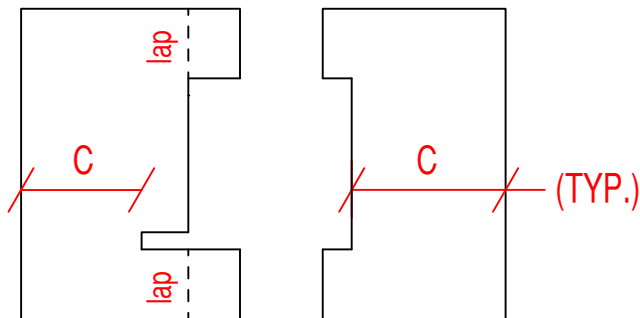
Step 1.
 Cut, Fold & Apply finger flashings at
 column flange for both sides



Step 2.
 Cut, Fold & Apply finger flashings at
 column web for both sides



Step 3.
 Cut & Apply target patch over
 finger flashings with 2" overlap



Round all Corners



GENERAL REFERENCE:
 FORTI-LOCK
 APPLICATION GUIDELINES

APPLICABLE SYSTEMS:
 PRE APPROVED ONLY

FTR FORTI-LOCK™ PMMA ANGLE SUPPORT

REVISES DETAIL
 ALL PREVIOUS

ISSUE DATE
 09-17-20

DRAWING NUMBER
 FTR-FL5