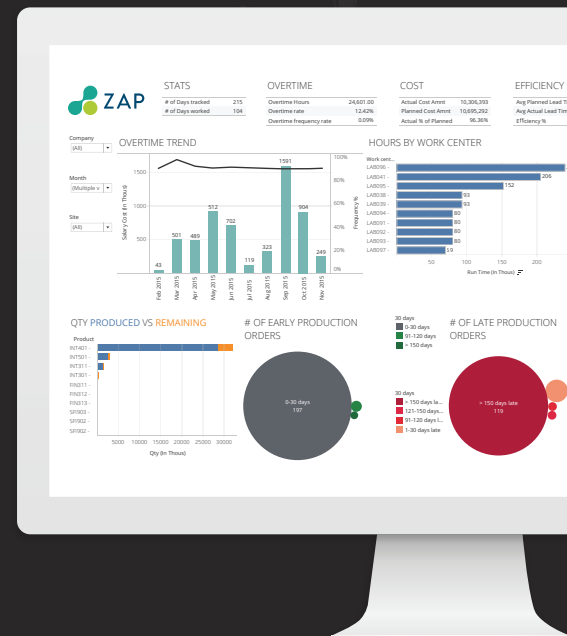




ZAP Data Hub for Microsoft Dynamics

Automated data management and
pre-built analytics for instant reporting



“The ability for ZAP Data Hub to automate the integration of multiple, complex, and often problematic ERP and operational data sources into a unified data model continues to resonate with customers.”

IDC

“I don’t have to worry about data management because with ZAP Data Hub it’s rock solid and trusted.”

SMIFFY’S

ZAP Data Hub automates the access, unification and preparation business data – from ERP and CRM to SQL databases, finance systems and Excel – for enhanced, cross-functional analysis in Power BI, Tableau and other BI software.

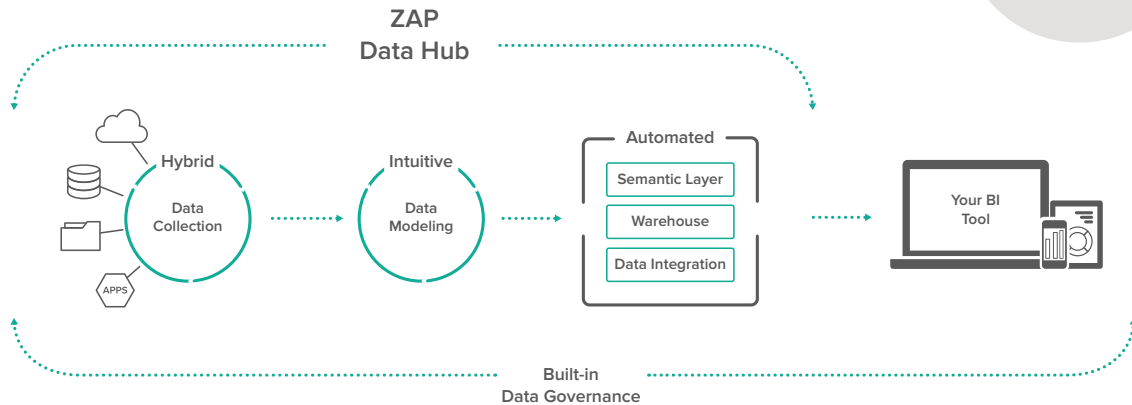
If your data sources include one or more of the Microsoft Dynamics range – NAV, AX, GP, CRM and 365 (F&O, BC and Sales) – ZAP is far and away the best choice, thanks to ready-made data connectors, data models and 500+ pre-built analytics and calculations. Microsoft Azure-accredited, ZAP is also a Microsoft Gold Partner and Power BI User Group partner.

ZAP significantly reduces the IT overhead associated with accessing and preparing data for analysis. It automates the creation of a data warehouse and semantic layer, with in-built data governance and security. Automation and an intuitive user interface replace inefficient and inaccurate manual processes and the need for time-consuming and expensive data warehouse projects.

ZAP Data Hub can be deployed on-premises or in the cloud (private, public, SaaS) and can access data on-premises, in the cloud or in hybrid of the two. It’s also the fastest, most automated and user-friendly means of moving your BI and data to the Microsoft Azure data platform.



ZAP Data Hub



Unique features

- The best data management software for Dynamics applications, ZAP Data Hub automates ELT and data warehouse creation and includes 500 built-in Dynamics-specific calculations and analytics.
- Access your Dynamics data – no matter where it's hosted. Create a feature-rich data warehouse and semantic layer with zero code. Automate data integration and utilize UI-based data modeling for better reporting. Built-in governance for accuracy and security.
- Connect and integrate all your other business data sources: ERP, CRM, financial systems, HRM, Marketing, SQL, Oracle, and Excel.

Real benefits

- Save the time and expense of manually accessing and preparing data. Remove the risk of human error and minimize key-man dependencies.
- Achieve deeper, faster analysis with pre-built analytics for BI tools such as Power BI and Tableau
- Deliver true cross-functional analysis by integrating additional data from multiple sources.
- Maintain access to legacy versions of Dynamics for continuous reporting, smooth upgrades and system migrations.

Feature checklist

Quick and easy data collection:

- ❑ Cloud, on-premise or hybrid data sources
- ❑ Drag-and-drop process, no scripts needed

Intuitive data modeling:

- ❑ Wide selection of pre-set, optimized, verified data models
- ❑ Familiar business terminology and graphical interface

Automated data integration:

- ❑ Faster and more accurate than manual data integration
- ❑ Quickly and efficient regardless of data type, size or attributes

Automated data warehouse:

- ❑ Automate ELT and data warehouse builds
- ❑ Built-in data type detection and profiling

Automated semantic layer:

- ❑ Replace technical data chores with logical, automated steps and caption-based metadata
- ❑ Cross-ledger querying, hierarchies, aggregations and materialized calculations

Pre-built analytics:

- ❑ 500+ analytics and calculations for multiple, integrated data sources
- ❑ Ready-made for Power BI, and each business function

Built-in data governance:

- ❑ Enterprise-class controls set security permissions and access
- ❑ Maintains corporate best practice, customer trust, legislative compliance

Get in touch

www.zapbi.com | info@zapbi.com

