



# SCRAP CHOPPERS

LINEAR & BULK SOLUTIONS



**CHOP | SHRED | SHEAR  
CUT-TO-LENGTH**

- » Process steel, plastic banding & more!
- » Custom solutions available

AUTHORIZED RESELLER



**SWEED is a privately owned American manufacturing company that is committed to providing trusted solutions through innovation and problem solving.**



---

# SOLUTIONS

## FOR A VARIETY OF INDUSTRIES



### WOOD & LUMBER

Whether your primary business is timber processing, pallet building, or manufacturing furniture, efficient disposal of band saw blades, and metal and plastic strapping is a major concern. Put an end to damaged equipment and injured workers. Clean up valuable shop space. With strategically placed Sweed Choppers, the dangerous and troublesome by-products of your business can be quickly and efficiently processed for safe, easy recycling.

#### Materials processed in the wood & lumber industry:

- » Steel Banding
- » Plastic/Poly Strapping
- » Band Saw Blades



### TEXTILES

Like most industries, textile manufacturers have recognized the need for employee safety and improved recycling of in-plant linear scrap. Baling wire, doctor blades, and steel banding are especially hazardous for employees. Sweed Choppers allow companies in the textile industry to provide safe handling of their manufacturing by-products.

#### Materials processed in the textile industry:

- » Baling Wire
- » Steel Banding
- » Plastic/Poly Strapping



### METAL FABRICATION

Companies processing stamping, punch press, or coils of metal from a slitter line deal with dangerous scrap on a regular basis. In a plant's high-volume automated operation, scrap winders are a bottleneck and pose a hazard to employees. Sweed Choppers can be married into an automated line, eliminating the need for traditional winders and greatly increasing employee safety.





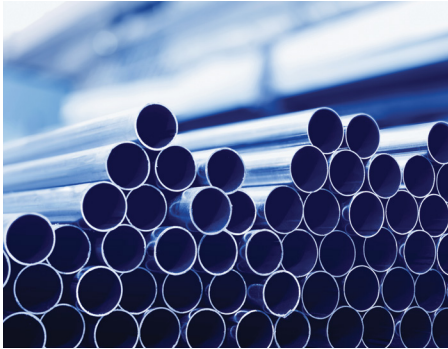
Scrap Chopping Solutions for Demanding Industries



---

# INDUSTRY SOLUTIONS

## CONTINUED



### TUBE & PIPE

Removing, storing, and disposing of tube scarf is a tricky and dangerous task. Tube scarf is very hot as it comes off the line, and cools to a hard material, with sharp, jagged edges. To help tube and pipe companies maintain employee safety while increasing production volume, Sweed Choppers handle the grueling job of tube and pipe scrap conversion and eliminate the need for unsafe scarf winders.

#### **Materials processed in the tube & pipe industry:**

- » O.D. Scarf
- » Tube and pipe crushing and chopping



### PAPER

Baling wire and blades used in the paper industry are one of the most dangerous and difficult to handle aspects of paper manufacturing and distribution. However, Sweed Choppers allow scrap processing for this industry to be as easy as feed-and-forget.

#### **Materials processed in the paper industry:**

- » Baling Wire
- » Doctor Blades
- » Coater Blades
- » Steel Banding
- » Plastic/Poly Strapping



### FOOD, BEVERAGE & PACKAGING

Food, beverage, and packaging industries typically produce large amounts of scrap banding. Sweed Choppers assist these industries by reducing their scrap dumpster fees, achieve their zero landfill goals, and enable them to obtain the highest prices for their recyclable waste.

#### **Materials processed in the food and beverage industry:**

- » Plastic/Poly Strapping
- » Steel Banding



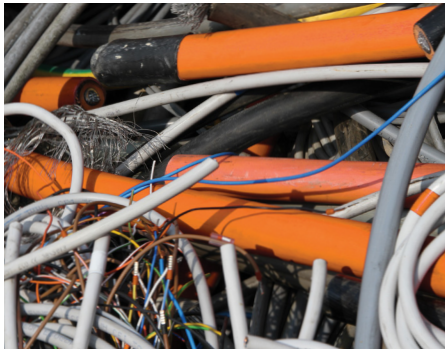


## WAREHOUSING

Every year expensive equipment is ruined and workers are injured by dangerous metal banding. Companies' bottom lines are threatened by damaged product, expensive repairs, and rising insurance rates. Sweed Choppers turn this profit-sucking menace into valuable scrap that can easily be recycled and help to increase employee safety. Expensive insurance claims, repair bills and storage issues will become a distant memory once Sweed Choppers are put to work.

### **Materials processed in the warehousing industry:**

- » Plastic/Poly Strapping
- » Steel Banding



## WIRE & CABLE

Sweed Choppers are prominent in the wire and cable industry. With a broad range of sizes and materials used in this multifaceted industry, when matching a Sweed chopper or separation system to a specific application, the possibilities are endless.

### **Materials processed in the wire & cable industry:**

- » Ferrous Wire and Cable
- » Non-Ferrous Wire and Cable
- » Electrical Multi-Strand Wire
- » Communication Cables
- » Fastener Wire
- » Armored Cable
- » ACSR
- » ACSS
- » 750 MCM
- » Wire Rope
- » Other jacketed and non-jacketed wire and cable



## SCRAP INDUSTRY

Scrap yards also have a broad range of materials to chop – anything from piles of banding to spools of ACSR. Banding applications are straightforward, and some scrap dealers find it beneficial to purchase a chopper for placement at their customer's facility which can dramatically save time and labor. For facilities with large amounts of communication cables, Sweed separation systems are a popular choice due to their quick investment recovery potential.





**SWEED Scrap Choppers help increase employee safety by eliminating hazardous scrap.**

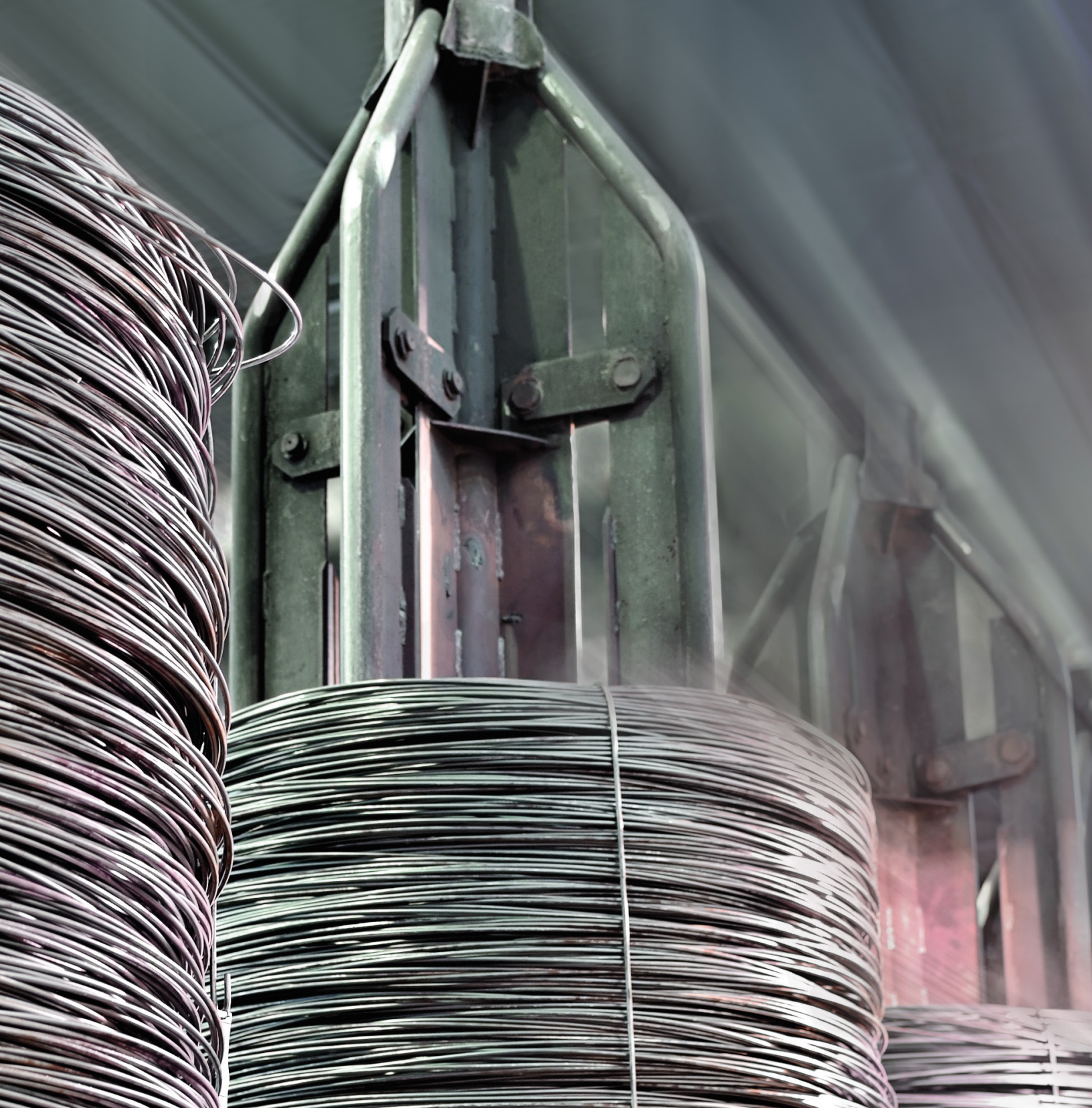


# CLEANUP CHOPPERS

Quick and efficient processing of plastic and light metals







**SWEED Scrap Choppers increase scrap value  
while reducing dumpster and landfill fees.**



# MULTI-SHIFT & HIGH VOLUME CHOPPERS

Multi-shift performers for metals, wire and light cable





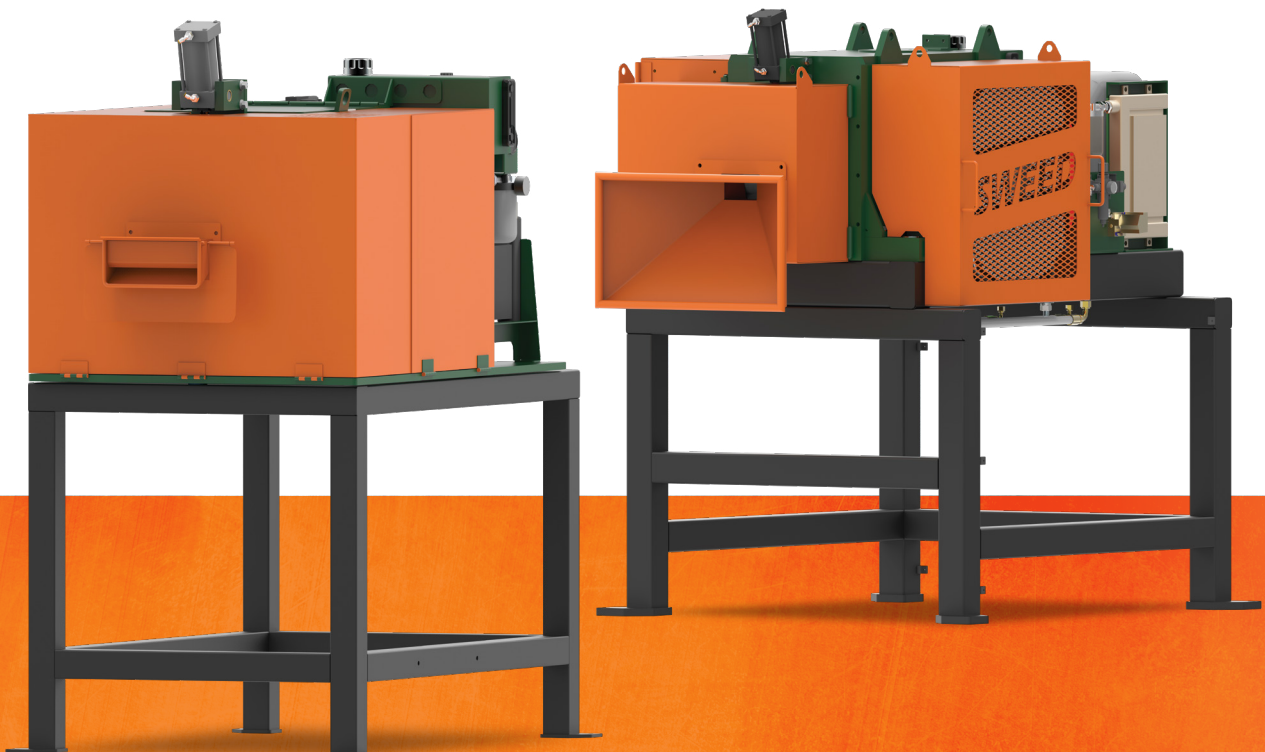


**Scrap choppers can despool material from a reel, be manually fed, or can be married into a production line. Either way, they are a smart addition to an operation.**

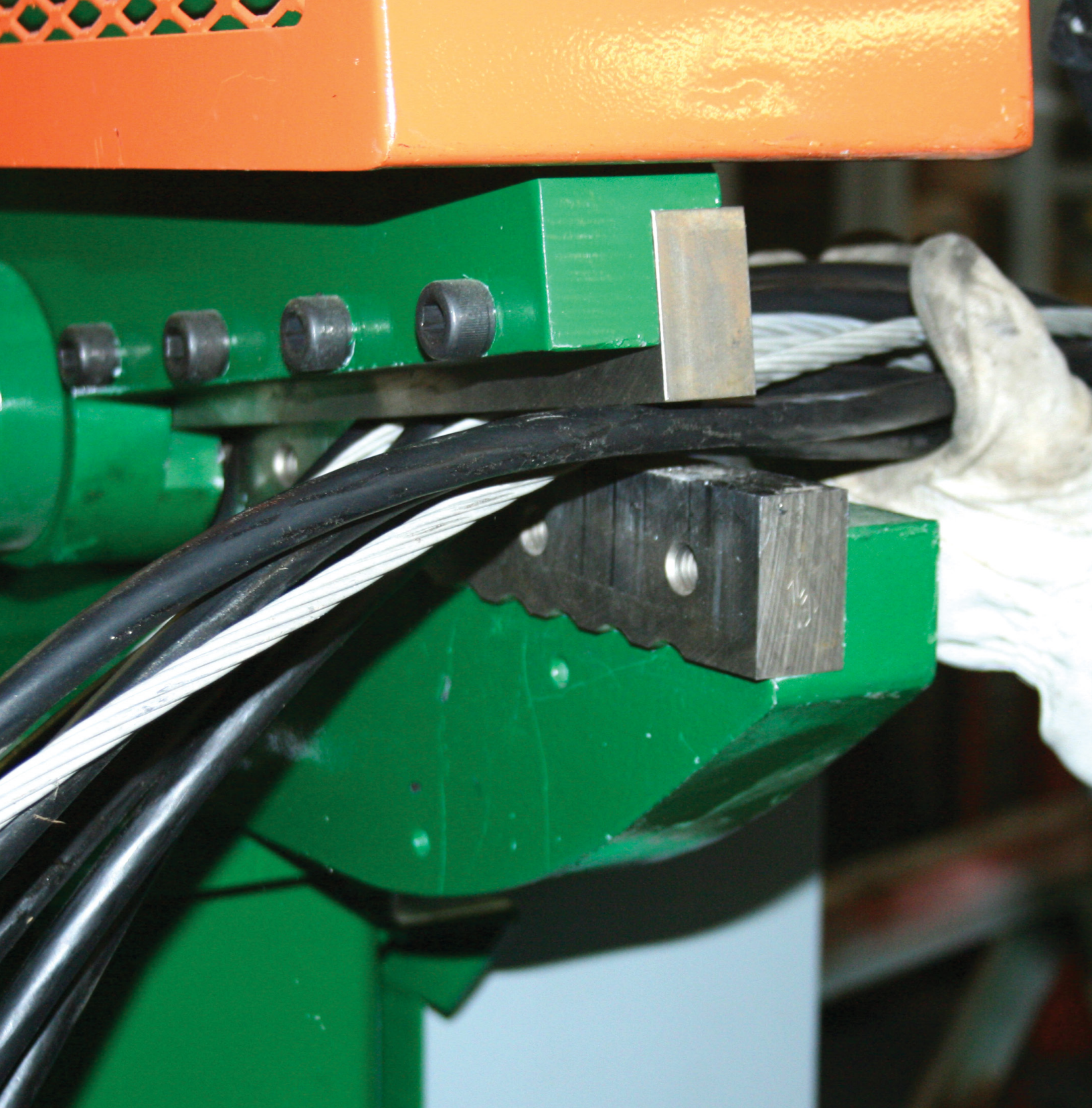


# INDUSTRIAL STRENGTH CHOPPING

Volume processing of heavy-gauge metals,  
rods, wire, heavy tubing, and cable







**SWEED has solutions for virtually all types of scrap,  
and the ability to customize units to meet specific needs.**





**SWEED can customize units with additional features to address safety concerns and improve machine performance.**



# CHOPPER UPGRADES AND OPTIONS

## ADDITIONAL SAFETY UPGRADES

### Custom Infeed Funnels

Standard and optional extended infeed funnels help direct loose scrap properly into the infeed while offering the operator increased protection.

### Safety Switches

Sweed provides several different safety switches on all Sweed Choppers depending on individual needs. Safety switches help companies maintain the safety standards they've set for machinery operations within their facility, and can also help protect against unauthorized operation of equipment.

### Brake Motor

Brake motors are available for all Sweed Choppers Model 450 and up. This is an added "emergency stop" feature that completely shuts down the chopper and eliminates the kinetic energy from the flywheel; immediately stopping the flywheel from continuing to rotate, rather than coasting to a gradual stop.

### Safety Exhaust Spillway Chute

This chute is a narrowed spillway that is attached underneath the machine and encompasses the exit point of the chopper. This added safety feature allows for the material to drop from under the chopper, while preventing any other foreign objects from entering up into the unit and into the knife path.

### Machine In-Use Light Indicator

A good option for a noisy facility, this light indicator provides a visual for an operator to know the chopper is powered and running.

### GFCI Plug

A ground fault circuit interrupter plug is available as an upgraded option for Sweed Chopper Models 300 through 450. This provides ultimate operator safety as it constantly monitors electricity and detects when current is flowing along an unintended path.

### Wash-Down Motor & Electrical

This option equips the unit with weatherproof electrical components designed to handle the harshest environments and keep operating consistently.

### Momentary Foot Switch Pedal

This feature allows the operator to automatically start and stop the chopper by operating a foot switch pedal. It provides the operator with optimal safety when handling entangled or otherwise dangerous scrap during feeding. The Momentary Foot Switch Pedal is used in conjunction with a Separate Feedworks Motor.

### Sound Dampening

Sound dampening options are available for individual machines and full enclosures that encase the entire scrap receptacle. Sound dampening provides a significant decrease in decibels and is beneficial for when processing heavy scrap metal materials that may exceed acceptable decibel limits while being chopped.

### Auto Starts and Stops

Sweed Choppers can be equipped with custom starting and stopping systems using photo cells. These can ensure that your chopper starts and stops when the material is correctly fed.

### Timed Stops

Timers can also be installed to start and stop your machine exactly when the operator chooses.

### Magnetic Starter

Ensures that machine is shut off when there is an interruption in power and will not restart automatically when power is restored, endangering the operator. This feature is standard on the Model 513 and above, and is available as an upgraded option on all other choppers.





AUTHORIZED RESELLER

Address

6-676 MONARCH AVE AJAX, ON ,CANADA L1S 4S2 905-428-3444 |  
[www.frommpackaging.ca](http://www.frommpackaging.ca) | [sales@frommpackaging.ca](mailto:sales@frommpackaging.ca)