



PROTECTING
YOUR WORLD

MetPro VCI packaging

Can metal corrosion impair or compromise
your product in transit or storage?



Metal after transport without VCI protection



Metal after transport with MetPro VCI protection

MetPro BioVCI

MetPro BioVCI HAS SET NEW STANDARDS IN CORROSION PREVENTATIVE PACKAGING TECHNOLOGY

For many years, Volatile Corrosion Inhibitors (VCI) have been incorporated into packaging materials to combat the effects of corrosion. Goods which have to be packed, can be conveniently packed in VCI.

VCI technology from MetPro has continuously evolved over the last 20 years to the point where we now have the most effective and user friendly VCI packaging material range globally available.

MetPro **BioVCI** technology development combines world leading corrosion protection with absolute safety in use. Independent comparative corrosion tests place MetPro's BioTect® VCI polythene film at the very top for corrosion protection performance. In addition, BioTect® VCI polythene films are so safe in use, that they have gained direct food contact approval!

The MetPro Service

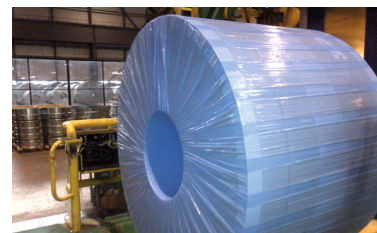
- Advice on corrosion prevention for new applications
- Resolving existing corrosion problems
- Review of existing corrosion preventative packaging for cost and performance improvements.
- Vast experience in corrosion protection for many industries:
Automotive; Steel; Metalworking; Engineering and machinery manufacture
- Export packing and long term storage recommendations

The MetPro VCI packaging range

- Polythene packaging in bags, tube, liners, covers etc.
- Paper and board packaging
- VCI emitters
- Moisture barrier foil and desiccants
- VCI Hand Wrap weave
- Metalworking and cleaning fluid additives

**Receive a personal introduction to our latest innovation,
the BioTect VCI PowerCard; contact MetPro at:**

Further information: www.frommpackaging.ca



Contact Us:

FROMM Packaging Systems Canada
Unit 6, 676 Monarch Ave, Ajax
ON, Canada, L1S 4S2
Sales@frommpackaging.ca

905-428-3444
WWW.FROMMPACKAGING.CA