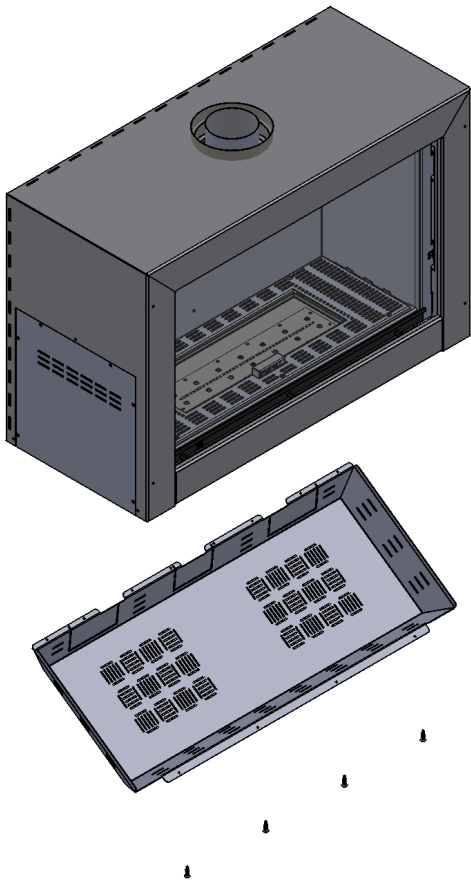
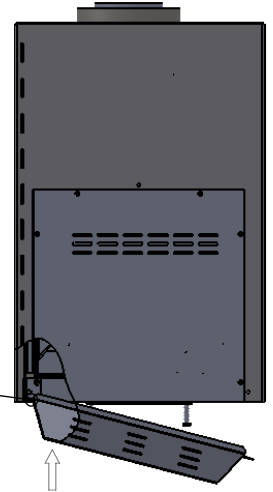
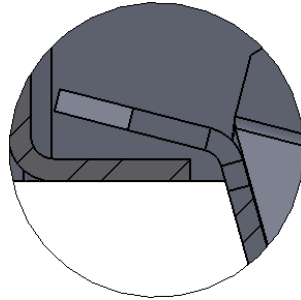


Stand Alone Skirt Installation Instructions



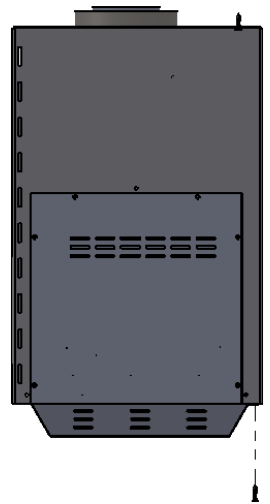
Step 1

Insert the back of the skirt into the back underside of the fireplace.



Step 2

Lift skirt to connect the front of the skirt to the front underside of the fireplace.

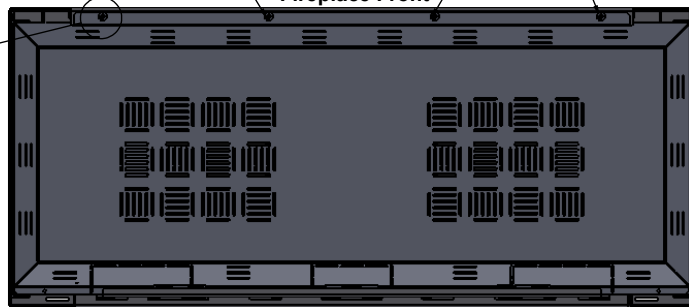


Step 3

Secure a screw (3mmx20) in each of the 4mm holes at the front of the skirt.



Fireplace Front



Fireplace Back

