

ORTAL[®]

YOUR LIFE. YOUR FIRE.

Interior Design Media

ORTAL offers media such as stones, glass and logs that can be provided with the fireplace unit. This section provides guidelines for safe placement of media.



WARNINGS –INSTALLING AND HANDLING MEDIA

- DO NOT install the interior design media until appliance installation is complete, the gas line is connected and tested for leaks, and initial burner operation has been inspected and approved.
- ONLY install media provided by the manufacturer or otherwise specifically approved by the manufacturer for installation and operation with the unit.
- The size and position of the media was engineered to give the appliance a safe, reliable and attractive flame pattern. Any attempt to use different media in the fireplace will void the manufacturer's warranty and will result in incomplete combustion, sooting, and poor flame quality.
- Media materials get very hot and will remain hot up to one hour after gas supply is turned off. Handle media only when materials are cool.
- If media are not installed according to the installation instructions, flame impingement and improper combustion could occur and result in soot and/or excessive production of carbon monoxide (CO). Carbon monoxide is a colorless, odorless and toxic gas.

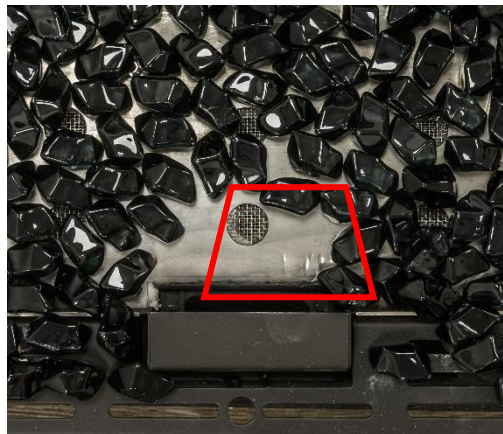


The appliance is NOT designed to burn wood. Any attempt to do so could cause irreparable damage to the appliance and may result in property damage, personal injury and/or loss of life.

Media Placement Guidelines

When installing media, adhere to the following general guidelines:

- Keep the media back from the pilot hood so at least one burner port is open. Otherwise, there will be delayed ignition.



- Do not use the hood to support media. This could cause overheating of the thermocouple.
- Keep the media away from the edges and the glass.

ORTAL®

YOUR LIFE. YOUR FIRE.

- Do not overfill the media tray. Keep 30% of the tray open to allow for air flow.



- When using the glass media, use a single layer and do not pack down. Once the media is placed, go back and move the glass back slightly to open up the ports.
- When placing stone media, use the space left by the round shape to leave the ports open.

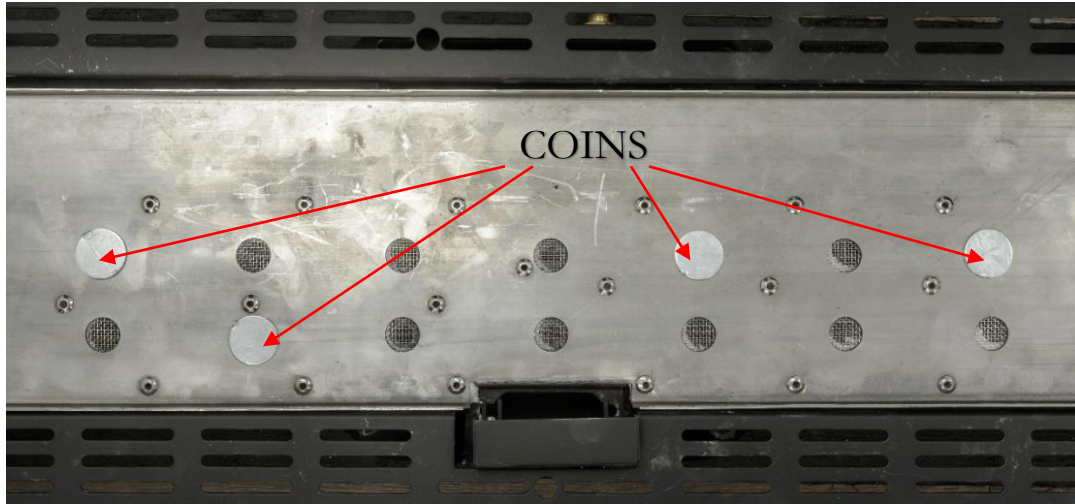


ORTAL[®]

YOUR LIFE. YOUR FIRE.

Tips for Log Media Placement

- Place the logs carefully to block as few ports as possible. If a log is placed over a port, block the port with a “coin” to keep the flame from creating soot on the media or to manipulate the look of the flame.



- Block as few ports as possible, and no more than 30% of total ports. Do NOT block ports that are next to one another. This will cause delayed ignition.
- When combining both logs and glass, it is recommended to place the logs (and coins if needed) first, and then to spread the glass according to the instructions given above.



ORTAL®

YOUR LIFE. YOUR FIRE.



Cold Climate Insulation

Seal all cracks around your appliance with noncombustible material and wherever cold air could enter the room. It is especially important to insulate outside chase cavity between fastenings, and under the floor on which the appliance rests if the floor is above ground level. Gas line holes and other openings should be caulked or stuffed with un-faced fiberglass insulation.

If the fireplace is being installed on a cement slab, a sheet of plywood or other raised platform can be placed underneath to prevent cold transfer to the fireplace and into the room. It also helps to sheetrock inside surfaces and tape and caulk fire stops for maximum air tightness.