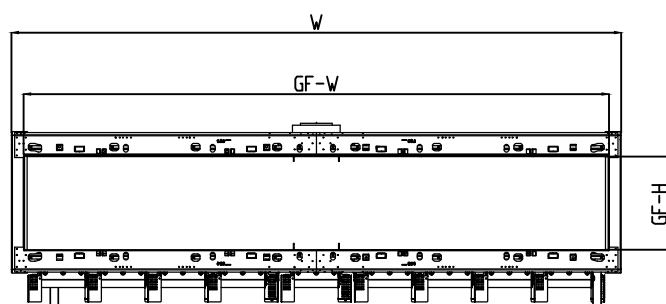


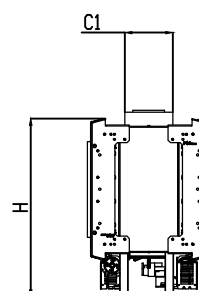


Manufacturer Update - Fireplace Legs Modification
 Manufacturer Effective Date: March 20th 2018
 Serial Number Forward #15275

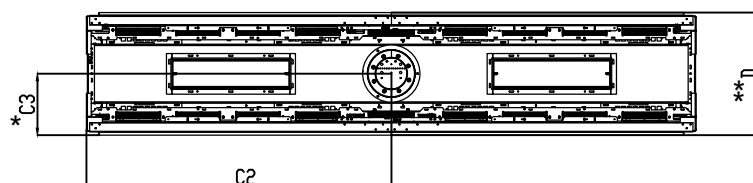
250 Tunnel Framing Information



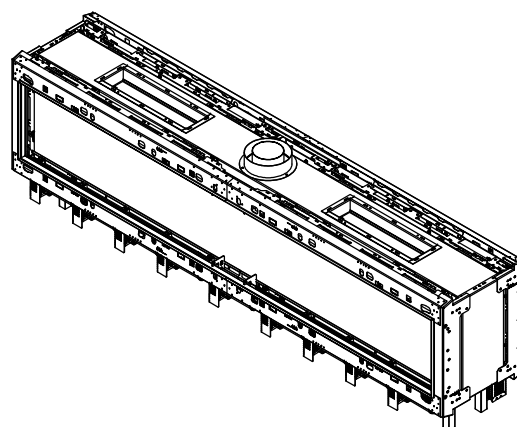
Front View



Side View



Top View



Model	(H) Height	(W) Width	(D) Depth	C1	C2	C3	Glass Opening	
							(GF) Front	(GS) Side
250	29 $\frac{5}{16}$ "	100 $\frac{1}{4}$ "	20 $\frac{3}{16}$ "	7 $\frac{7}{8}$ "	50 $\frac{1}{8}$ "	10"	96 $\frac{1}{4}$ " W X 15 $\frac{3}{4}$ " H	—

* Dimensions includes $\frac{1}{2}$ " lip (for drywall)

** Dimensions includes 2 X $\frac{1}{2}$ " lip (for drywall)

Note : 1. Drawings are not to Scale

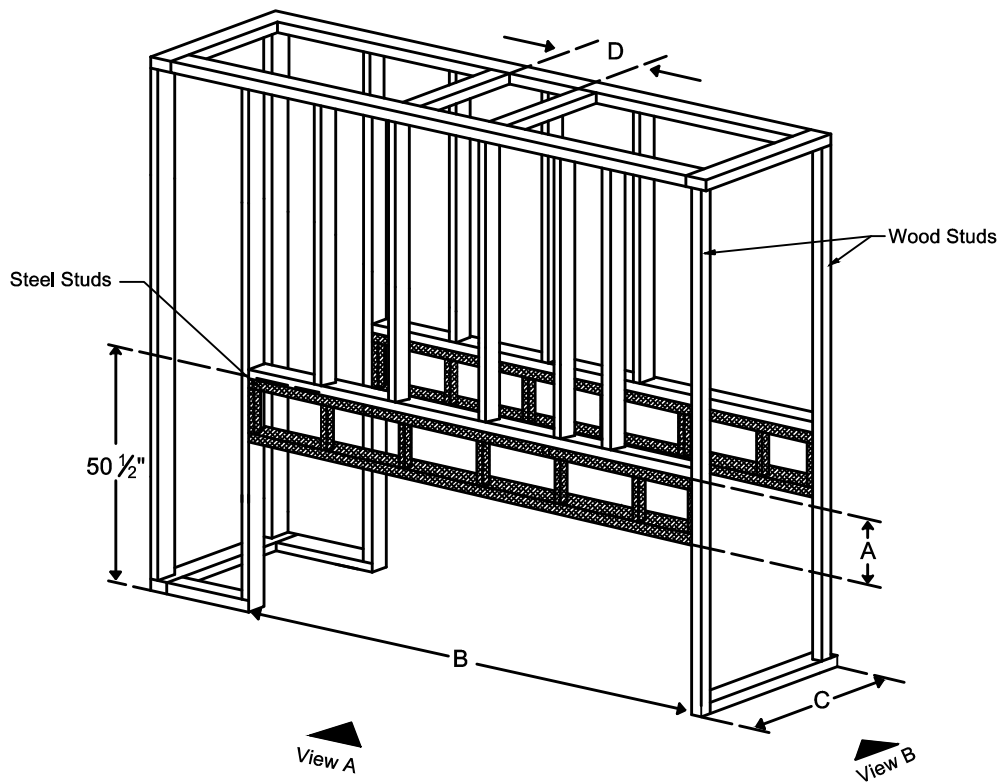
2. All dimensions in inches

3. The dimensions are both for
Double Glass and Protective Screen

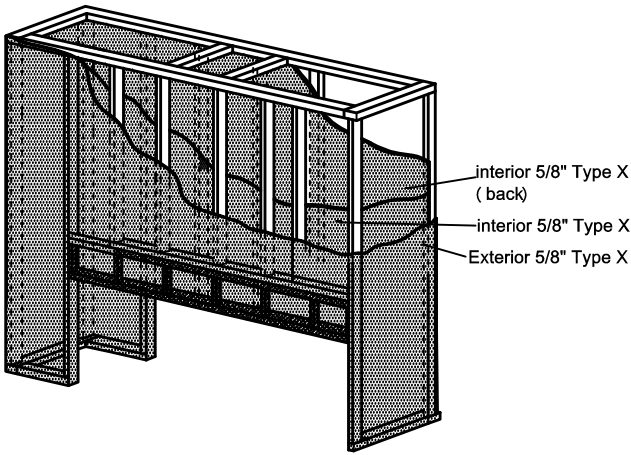


Manufacturer Update - Fireplace Legs Modification
Manufacturer Effective Date: March 20th 2018
Serial Number Forward #15275

250 Tunnel Framing Information

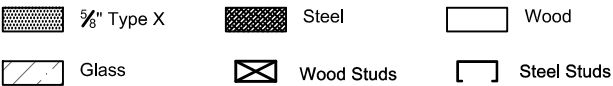


Model	A	B	C	D
250	20 ⁵ / ₁₆ "	105 ¹ / ₂ "	19 ³ / ₁₆ "	10"



Note : 1. Drawings are not to Scale
2. All dimensions in inches
3. The dimensions are both for Double Glass and Protective Screen

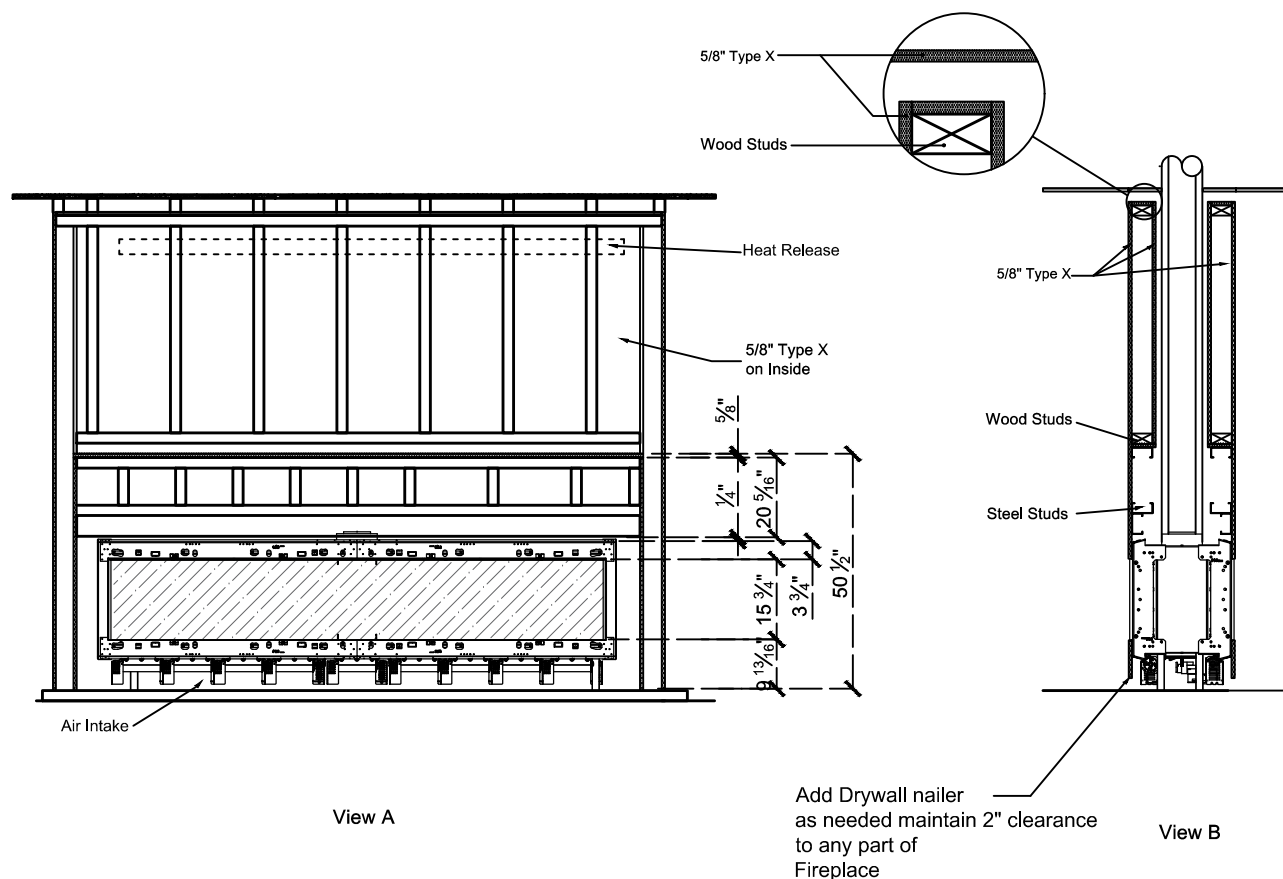
LEGEND





Manufacturer Update - Fireplace Legs Modification
 Manufacturer Effective Date: March 20th 2018
 Serial Number Forward #15275

250 Tunnel Framing Information



Clearance 2" from each side to non combustible material

The valve can be moved 36" - 40" from the center of the fireplace in any direction

- Note : 1. Drawings are not to Scale
 2. All dimensions in inches
 3. The dimensions are both for Double Glass and Protective Screen