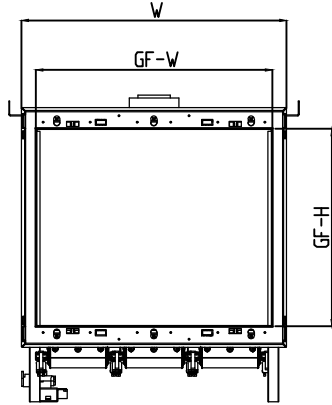
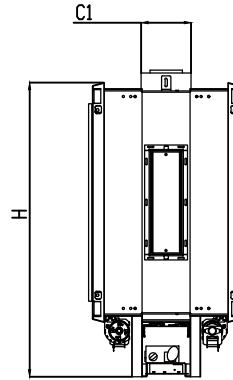


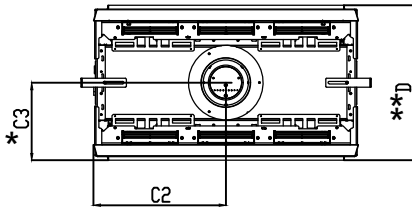
75X65 Tunnel Double Glass/Protective Screen - Flush



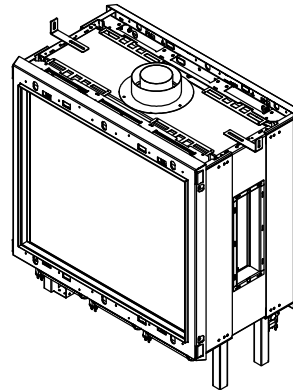
Front View



Side View



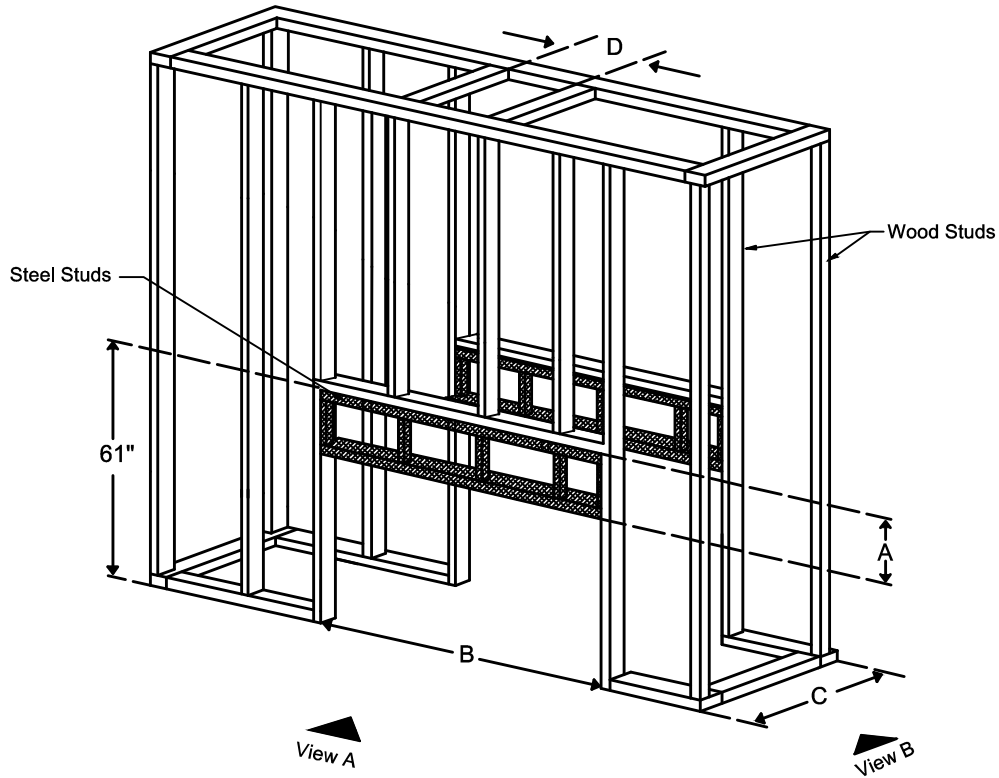
Top View



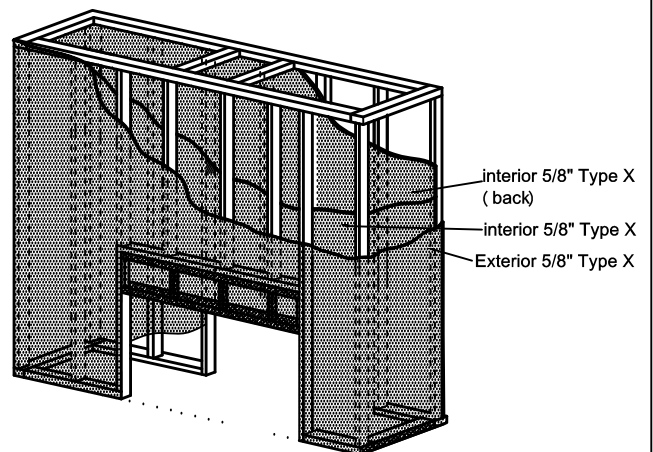
Model	(H) Height	(W) Width	(D) Depth	C1	C2	C3	Glass Opening	
							(GF) Front	(GS) Side
75X65	38 $\frac{1}{16}$ "	34 $\frac{5}{16}$ "	20 $\frac{1}{16}$ "	6 $\frac{7}{16}$ "	17 $\frac{3}{16}$ "	10 $\frac{1}{16}$ "	30 $\frac{5}{8}$ " W X 25 $\frac{9}{16}$ " H	—

- * Dimensions includes $\frac{1}{2}$ " lip (for drywall)
 ** Dimensions includes 2 X $\frac{1}{2}$ " lip (for drywall)
 Note : 1. Drawings are not to Scale
 2. All dimensions in inches
 3. The dimensions are both for
 Double Glass and Protective Screen

75X65 Tunnel Double Glass/Protective Screen - Flush



Model	A	B	C	D
75X65	22 1/16"	39 9/16"	19 1/16"	8 3/4"

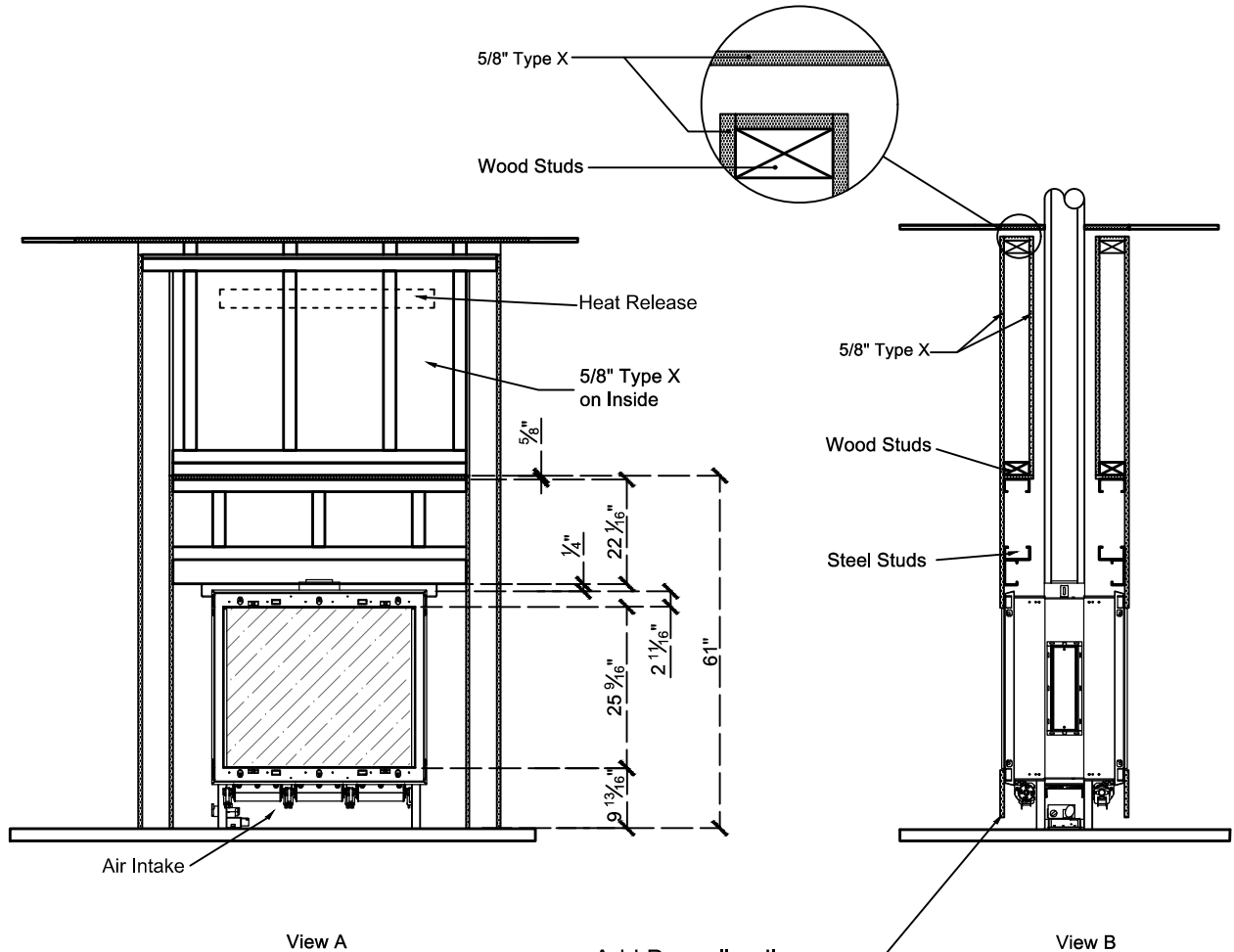


Note : 1. Drawings are not to Scale
2. All dimensions in inches
3. The dimensions are both for Double Glass and Protective Screen

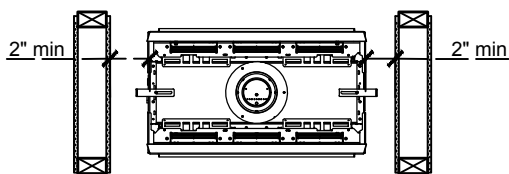
LEGEND

-  5/8" Type X
-  Steel
-  Wood
-  Glass
-  Wood Studs
-  Steel Studs

75X65 Tunnel Double Glass/Protective Screen - Flush



Add Drywall nailer as needed maintain 2" clearance to any part of Fireplace



Top View

- Note :**
1. Drawings are not to Scale
 2. All dimensions in inches
 3. The dimensions are both for Double Glass and Protective Screen

Clearance 2" from each side to non combustible material

The valve can be moved 36" - 40" from the center of the fireplace in any direction