



Hosted VoIP Phone System

Poly OBI USB WiFi Adapter



Green Platform

The *Poly USB OBI WiFi Adapter* connects compatible Poly phones to the internet without additional phone cabling or switches required. Since SIP phones require an internet connection, this gives you the freedom to take your phone home at a moment's notice or install a phone in a location that otherwise may be difficult to have a hardwired line.

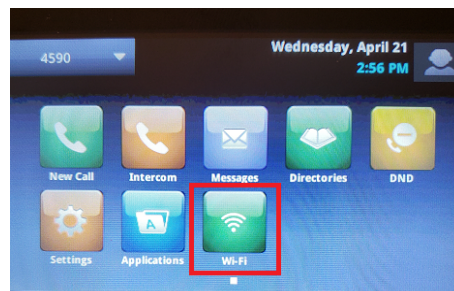
Before starting you must have:

1. Poly USB OBI WiFi Adapter
2. Compatible Poly VVX (USB compatible) phone with power cord
3. Local WiFi network name
4. Local WiFi network passcode

Please note, depending on the compatible phone model you are using, the screens below may be slightly different.

To configure the adapter:

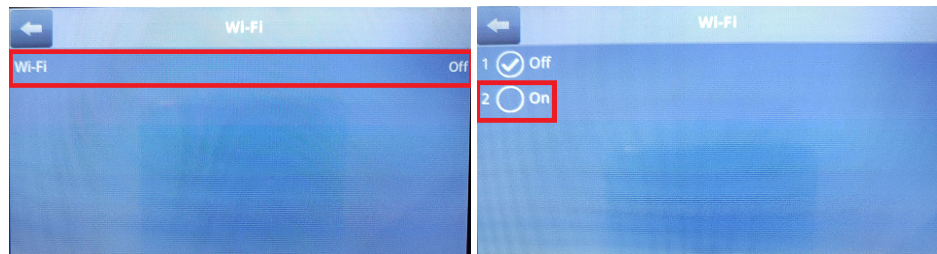
1. Connect the Poly USB VVX phone to power.
2. Insert the Poly USB OBI WiFi Adapter into a USB port on the Poly VVX phone.
3. Press Home button
4. Select WiFi



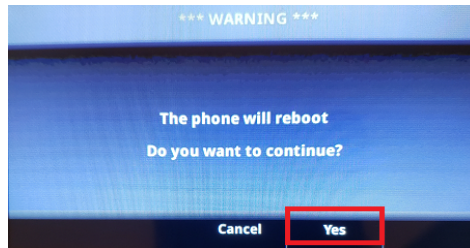
5. Start WiFi setup



6. Select WiFi then select On



7. Phone must be rebooted- select Yes.



8. After the phone reboots, you will be prompted to set up WiFi. Press Start.



9. Follow the screen prompts to select the desired WiFi network from the list then enter your appropriate WiFi network passcode.

Important:

Access points, wireless devices, firewalls, and other elements of your local area network can potentially restrict SIP voice traffic. Be sure that the network supporting your adapter is configured to allow SIP voice traffic.

The range and capacity of your WiFi connection can affect the quality of your phone calls. Consider a network with fewer devices, stronger signal, and faster speed when possible.