

A dense, vibrant green wall installation featuring a variety of plants including ferns, grasses, and small flowering plants. The plants are arranged in a lush, layered pattern, creating a rich texture and color palette of various shades of green, from deep forest greens to bright, lime greens. Some plants have long, narrow leaves, while others are more bushy or fern-like. The overall effect is a thick, living wall of vegetation.

EVERGREEN WALLS LOOKBOOK

Evergreen Premium

ABOUT EVERGREEN WALLS

Evergreen Walls is the leader in green walls, bespoke greenery, and installation in Australia and overseas. Setting new benchmarks every year.

We are the first and only Fire-certified Green Wall product on the market, meaning our [Premium Green Walls](#) are compliant with Australian standards AS ISO 9705 - 2003 and AS 5637.1:2015 which can be used in commercial and residential buildings.

Our artificial green wall panels allow consumers, designers and building professionals to install greenery in a wide range of locations that don't necessarily lend themselves to natural plant growth or maintenance.

With clients all over the world, our innovative green walls systems are available locally and internationally through a significant distribution footprint. Evergreen Walls is an agile business that works to add value by solving defined client needs and project requirements.



DURABILITY

Evergreen green wall panels are built to last. Whatever look you choose, you know you're getting the strength and durability your clients deserve that will last for many years to come. All green wall products come with a minimum 4 year warranty on fading or cracking.



DESIGN VERSATILITY

From classic vertical gardens to a more contemporary eye-catching look, it's ultimately up to you how you use our green wall systems. Our pre-fabricated, modular range of green wall options can be used on so many wall spaces, you're only limited by your own imagination. Choose a look and run with it.



EASY SPECIFICATION

Pre-fabrication makes the entire building process fast and simple compared to traditional construction methods. Our products come pre-made so require less installation time. The modular panels are easy to build and fit together requiring fewer nails, screws and other add-ons. Evergreen Walls also provide our very own proprietary fixings for Premium Green Walls.



PEACE OF MIND

Evergreen Walls modular green wall products are developed and manufactured to suit Australian or International Standards. There is a perfect green wall system for every project and with warranties and fire certificates you know can rest easy knowing you've made the right choice.

THE BENEFITS OF EVERGREEN WALLS



REALISTIC

We only use high quality artificial plants, this ensures a realistic look which will be hard to notice by your admirers.



COST

Our realistic product not only never dies but will cost less than HALF the cost of a real set up. Don't forget no on going costs either.



NO IRRIGATION OR UV LIGHTS

Avoid huge irrigation set ups, installing UV lights, or daily hassles of watering your plants. Once your walls is installed thats it.



MAINTENANCE FREE

With artificial green walls the only maintenance you need to do is clean your plants with a damp cloth, or let the rain clean it for you. Simple.



INSTANTLY GREEN

With the real walls, it usually takes weeks for the plants to grow full size, ours come with instant, and permanent results.



PERSONALIZE IT

Our panels are easily upgraded, meaning you can add extra flowers or plants to make your wall unique to you.



HYPOALLERGENIC

Evergreen panels do not contain any toxic chemicals or components.



SOUND ABSORBER

Absorbing up to twice as much as the industry average for products of the same size and thickness.



SNAP & LOCK SYSTEM

Each panel interconnects with a snap and lock system so you can create a wall to any size. The system is so simple anyone can do it without much effort.



RECYCLABLE

Our Evergreen panels are made from low density UV stabilised polyethelene (LDPE). This is a common type of material used in many objects you use everyday.



UV STABLE

Unlike most artificial greenwalls, Our Evergreen Our panels are made with a UV stabilised polyethelene during the manufacturing process meaning the pure pigments will last longer than UV sprayed green walls.



INDOOR & OUTDOOR

We have panels for indoor and outdoor areas. You can put our product almost anywhere you like.



EASILY CUT

Simply cut your panels to any shape or size with garden snippers or a sharp blade. We advise you measure your area a few times before cutting to ensure a seamless finish.



NO DEAD SPOTS

Not all plants are designed to live indoors and dead spots can occur. These issues happen frequently. Not with Evergreen.



WARRANTY

For peace of mind, all green wall panels come with a minimum 4-year warranty. This covers UV damage, fading or cracking for both indoor and outdoor panels.



WE INSTALL

We design our Evergreen Walls to be easy to install, but there are some instances where you might want a skilled, steady hand that can get the job done right. We can dispatch a team from anywhere in the country to your location and have your artificial green wall installed and looking simply stunning in no time. [Request a quote here.](#)

THE HIGHEST QUALITY GREEN WALL PANEL ON THE MARKET

An architecturally designed system with commercial grade materials makes the Evergreen Panel the ultimate in artificial green walls. The fire-rated foliage is installed to look like it's growing across the wall and is alive with elegant vibrancy. Relatively lightweight and easy to specify into any project - it's a dream for building designers and clients alike.

The premium collection is the only Group 2 Certified Artificial Greenery in Australia. This official fire rating is in accordance with Australian industry standards AS ISO 9705-2003 and AS 5637.1:2015. These premium green walls are the most realistic and luscious green walls on the market.



GROUP 2 FIRE RATING

TEST MEASUREMENT

The National Construction Code of Australia and AS 5637.1:2015 allow the classification of materials by Group Number, which indicates the amount of time taken for the material being tested to reach flashover under AS ISO 9705 - 2003 test conditions.

The NCC and AS 5637.1:2015 define flashover to be a Heat Release Rate of 1 MW.

The NCC and AS 5637.1:2015 also define the smoke growth rate index, or SMOGRA, as a quantity which may be obtained from the smoke obscuration measurements obtained in the AS ISO 9705 test.

Other metrics also measured in the test include:

- Heat flux measurements
- Volume flow rate measurements
- Heat release rate measurements
- Carbon monoxide production rates
- Carbon dioxide production rates
- Light obscuration measurements

TEST FINDINGS

The Evergreen Panel product subjected to the Reaction to Fire test achieved a formal Group 2 certification, which is the second-highest Group Number under the NCC and AS 5637.1:2015 scheme. The Evergreen Premium Panel was thus deemed safe to install in residential and commercial buildings, anywhere other than a fire escape.

[Read more](#)



SECTOR SOLUTIONS

Due to the nature and benefits of our products, we work across a number of key construction sectors and deliver unique value to each one.



Airports & Public Spaces



Branding & Signage



Events



Healthcare



Hospitality



Resorts & Hotels



Office & Retail



Shopping Centres



Strata

THE EVERGREEN PREMIUM PANEL

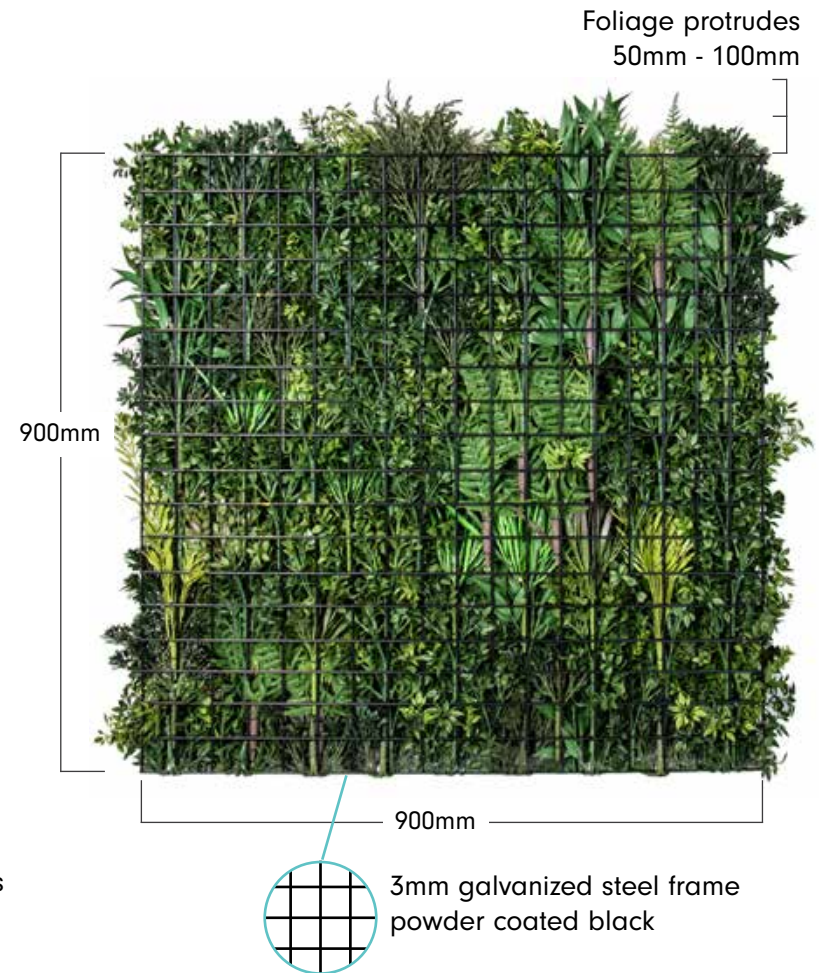
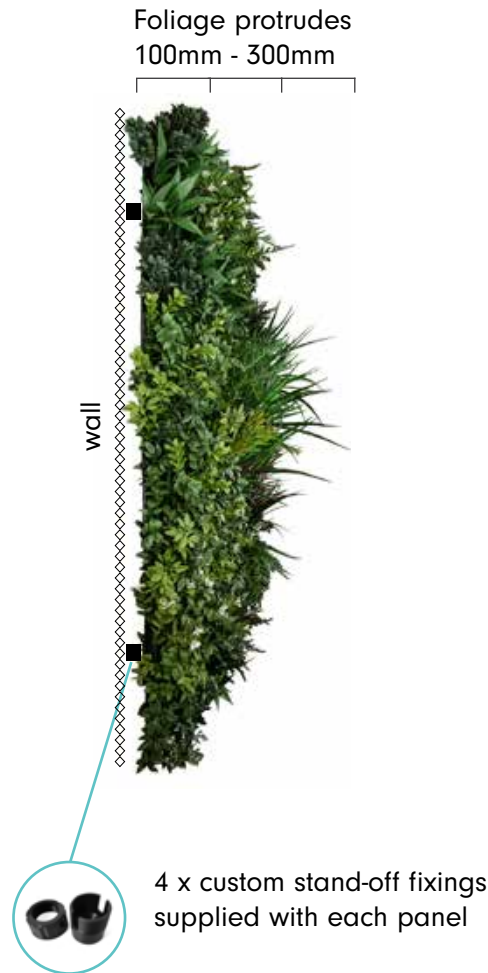
Plants are neatly fixed to the galvanised steel mesh grid using 3 black cable ties per plant. Plants are fixed facing upwards with an overhang on top, minimal overhang on the sides and at the base. The Evergreen Premium is the base panel to the Lavender and Spring premium panels. There are additional style options to choose from by selecting individual stems and inserting them into the base panel.



Weight: 5kg

Warranty: 4 years

Foliage composition: 12 different types of UV and fire treated plants. Each panel is hand-made and unique to ensure pattern is not repeated.



PREMIUM STYLE OPTIONS

Evergreen Premium

The Evergreen Premium is available in two sizes and four styles. There are additional style options to choose from by selecting individual stems and inserting them into the base panel.

Foliage composition: Group 2 Certified, fire rated foliage featuring 12 different soft-touch stems. Hand made onto the galvanised steel frame with zipties. Each 900x900 premium panel consists of approximately 90 stems.





Premium Autumn

Foliage composition: Group 2 Certified Evergreen Premium panel + Autumn Style pack

The Autumn style comes with 2 x Grass Bush Burgundy, 1 x Grass Bush Brown, 1 x Fishbone Fern to be inserted as desired

Weight: 5kgs

Suitable for indoor and outdoor use





Premium Amazon

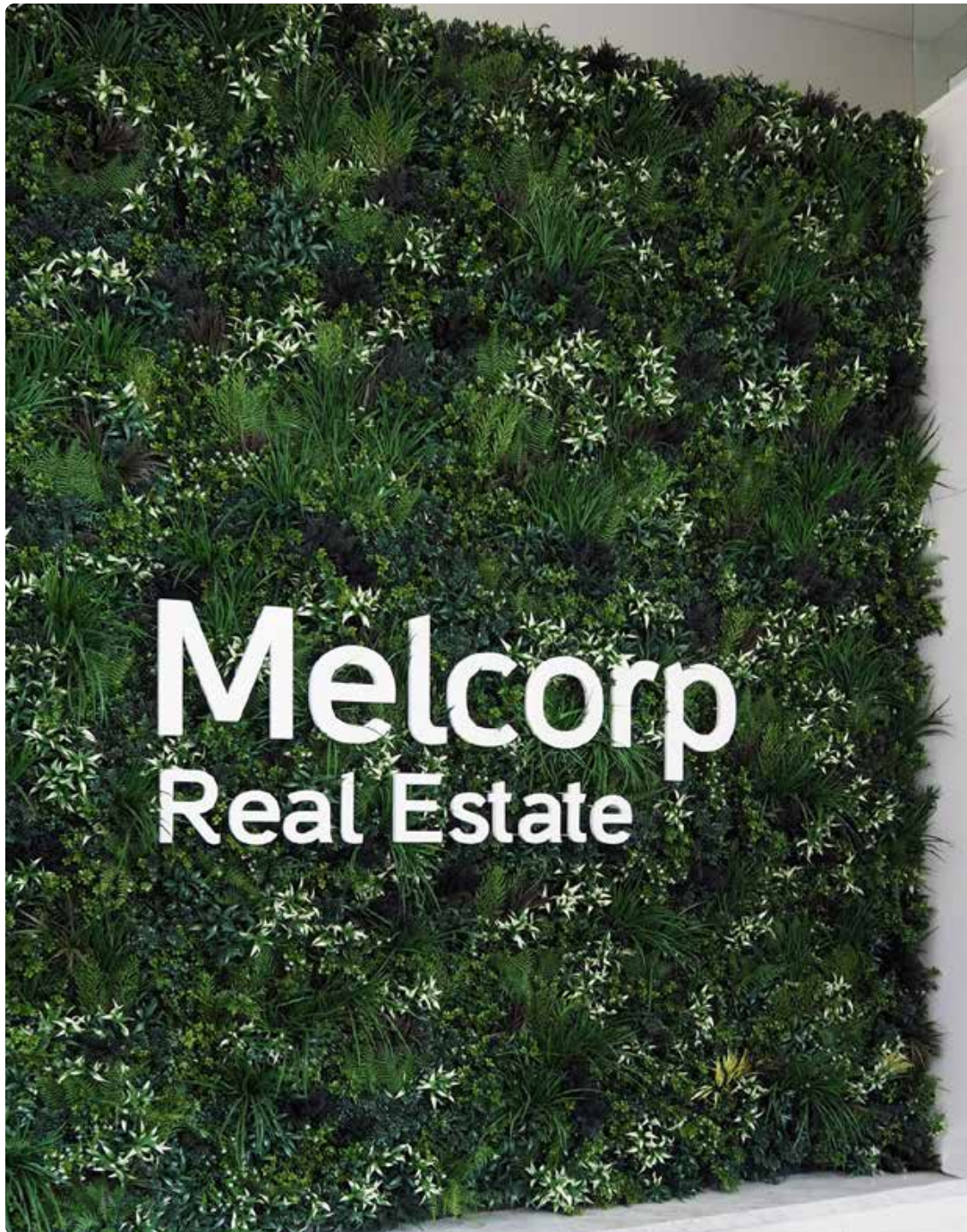
Foliage composition: Group 2 Certified Evergreen Premium panel + Amazon Style pack

The Amazon style comes with 1 x Leather Fern, 1 x Calathea Bush Burgundy, 1 Grass Bush Green, and 2 x Grass Bush Brown to be inserted as desired

Weight: 5kgs

Suitable for indoor use only





Premium Spring

Foliage composition: Group 2 Certified Evergreen Premium panel + Spring Syle pack

The Spring style pack comes with 1 x White Tip Grass Bush, 2 x Star of Jasmine, 1 x Lavender Bush to be inserted as desired

Weight: 5kgs

Suitable for indoor and outdoor use





Premium Lavender

Foliage composition: Group 2 Certified Evergreen Premium panel
+ Lavender Style pack

The Lavender Style comes with 5 x Lavender Bushes to be inserted
as desired

Weight: 5kgs

Suitable for indoor and outdoor use





Premium Hedge

Foliage composition: Group 2 Certified, fire rated premium hedge featuring a variety of green hues to mimic the textures and foliage of freshly growing hedges. Typically installed outside resorts, hotels and high-end residential gardens.

Backing composition: 3mm black galvanised steel frame

Weight: 5kgs

Suitable for indoor and outdoor use



PREMIUM PACKAGING & COMPONENTS

All Premium Walls are delivered neatly packaged with everything you need with everything needed for a typical installation.



INSTALLATION

All premium panels come with 4 proprietary stand-off fixings per panel which are designed to hold the mesh panel to most wall types. Each installation kit includes a cardboard fixing template to locate the stand-offs on the wall to align with the horizontal part of the grid. All Premium panels have been created with 9 panel variations, ensuring there are no reoccurring patterns when the panels are fixed to the surface.

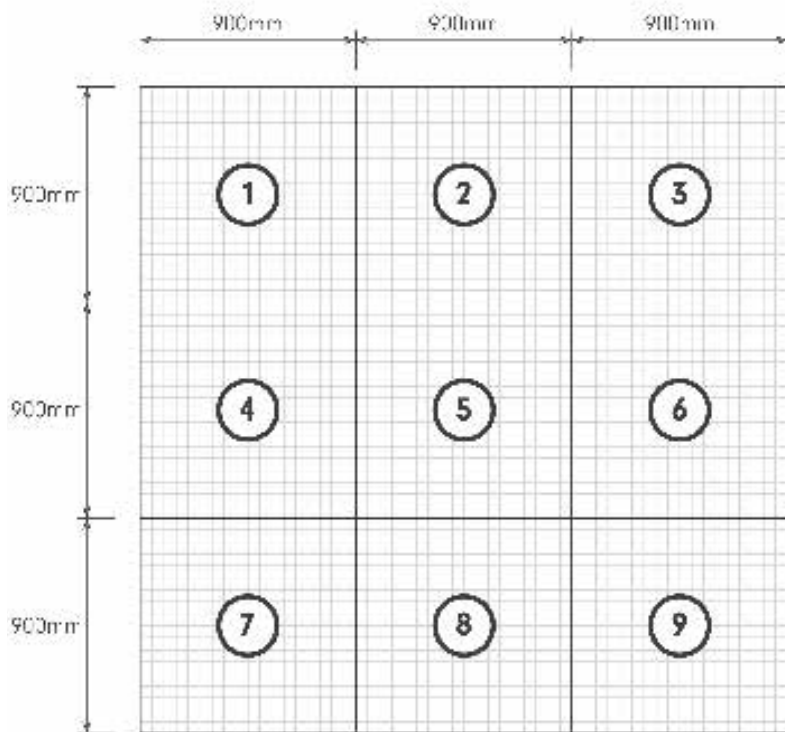
Evergreen Walls provides installation services all over Australia and overseas. To request a quote for supply and installation, fill out [The Evergreen Walls online form](#).



INSTALLATION LAYOUT

All Premium panels have been created with 9 panel variations. This ensures there are no reoccurring patterns when the panels are fixed to the wall. All orders are packed with a number of different panel variations within each box.

To calculate the number of panels needed for your project, use the [Evergreen Walls Panel Calculator](#) and select your desired panel. Alternatively contact us via info@evergreenwalls.com.au



Note Panel layouts and combinations should be designed to suit wall sizes prior to installation. All Plants must be facing in an upwards direction when installed.

GET IN TOUCH

PHONE

(02) 9817 3002

EMAIL

info@evergreenwalls.com.au

ADDRESS

48 Winbourne Road
Brookvale NSW 2100
Australia

WEBSITE

www.evergreenwalls.com.au

SOCIAL



[evergreenwalls](#)



[evergreen_walls](#)



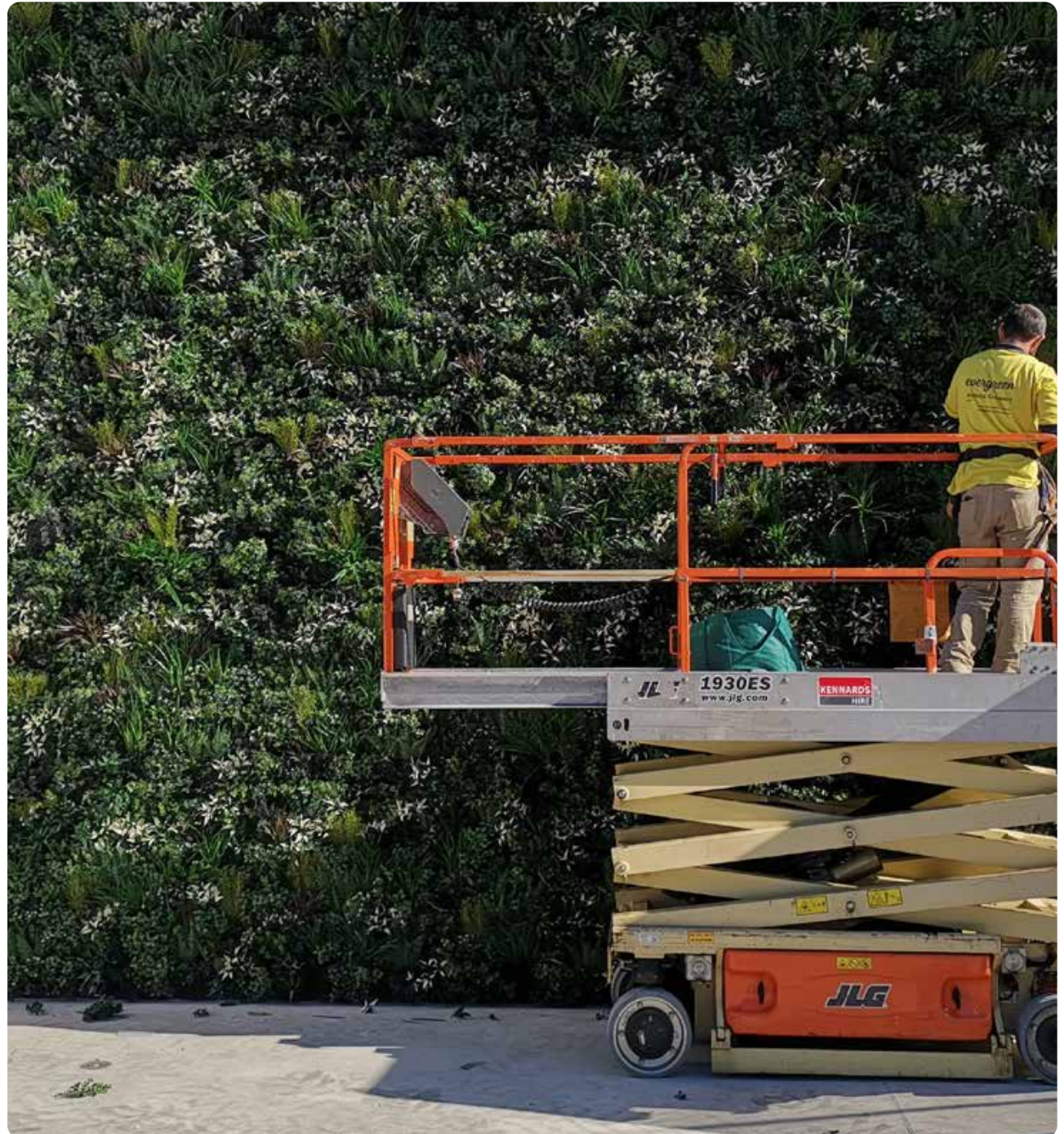
[evergreenwalls](#)

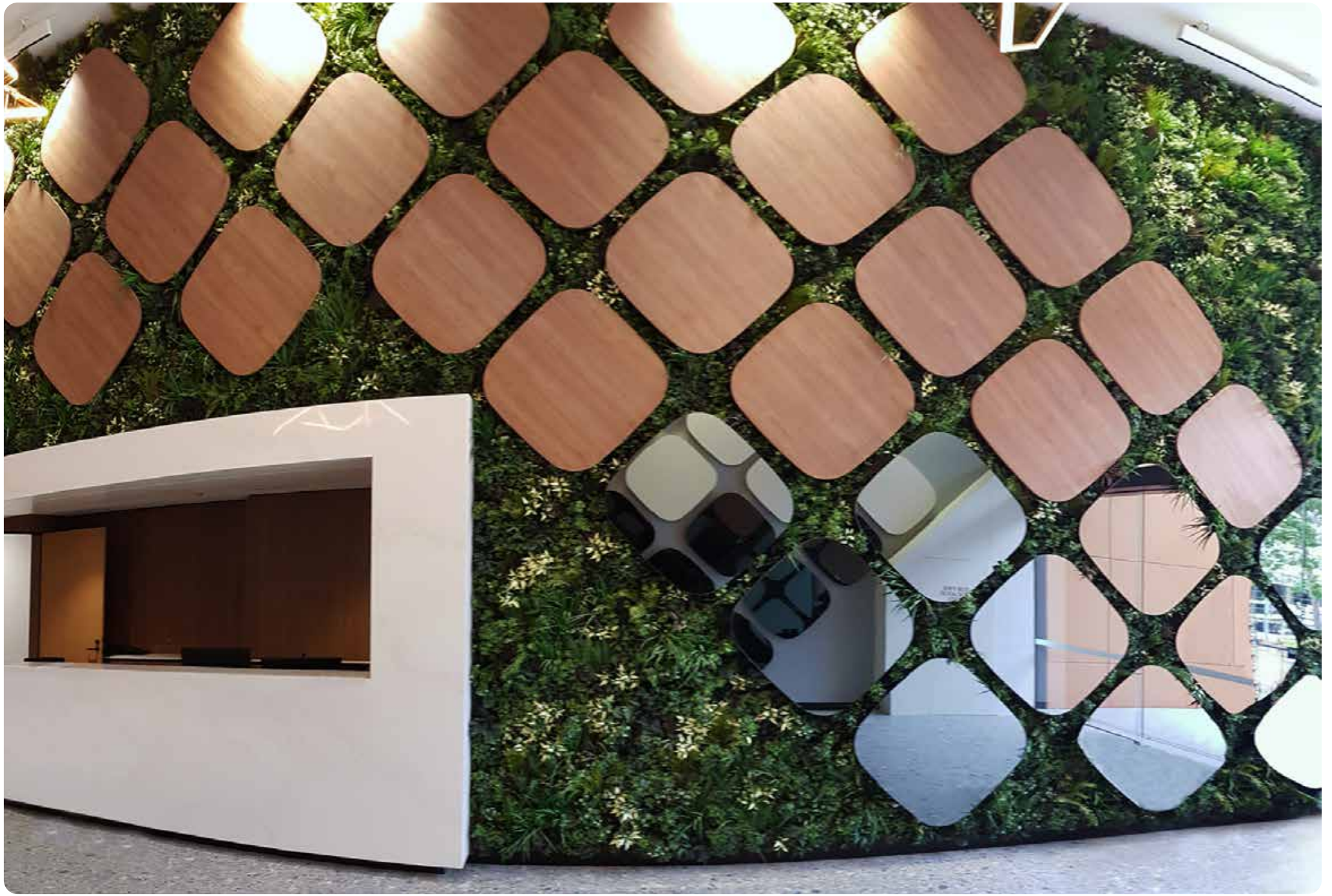


[evergreenwalls](#)



[evergreen-walls](#)







M MACK
CIVIL ENGINEERING



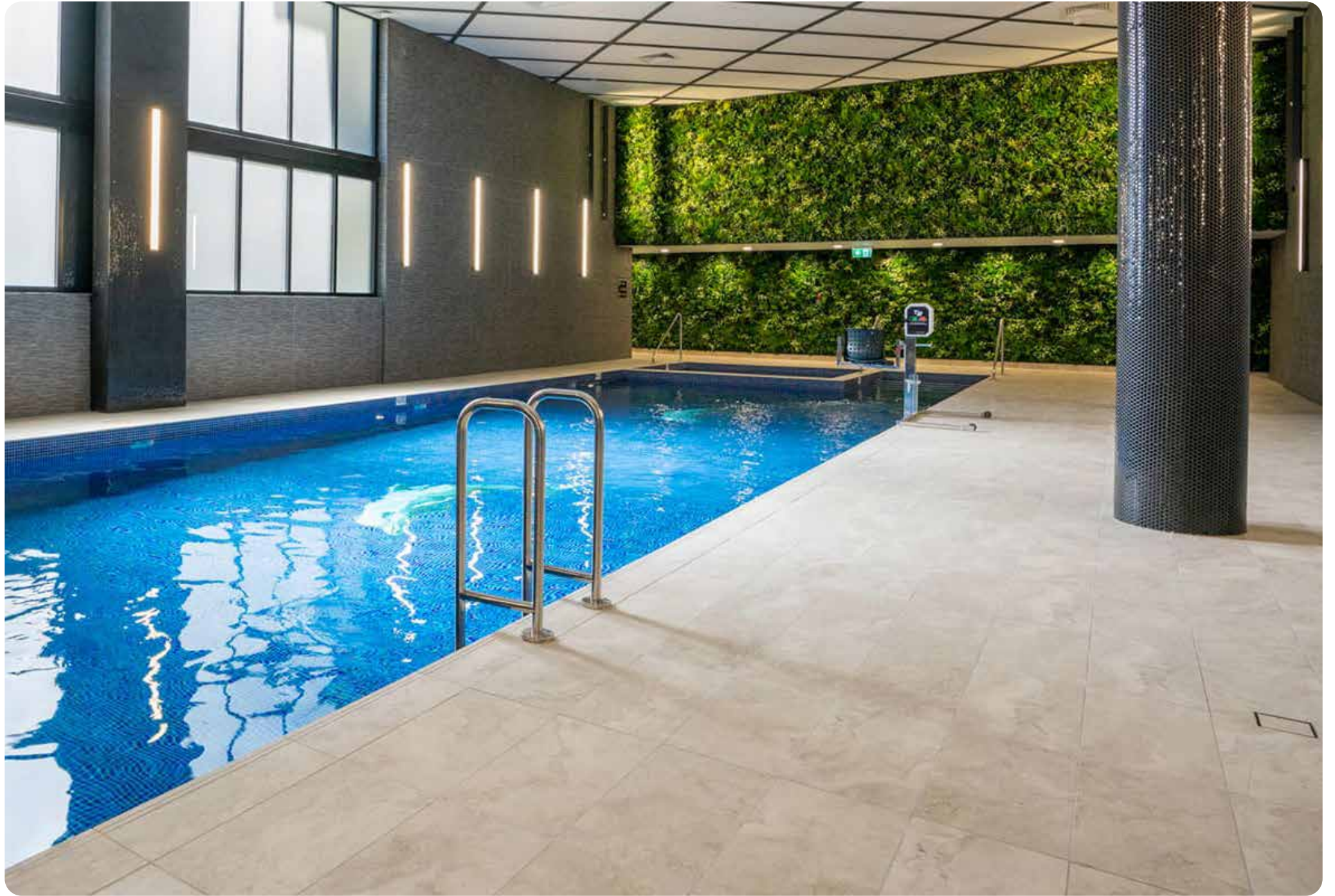


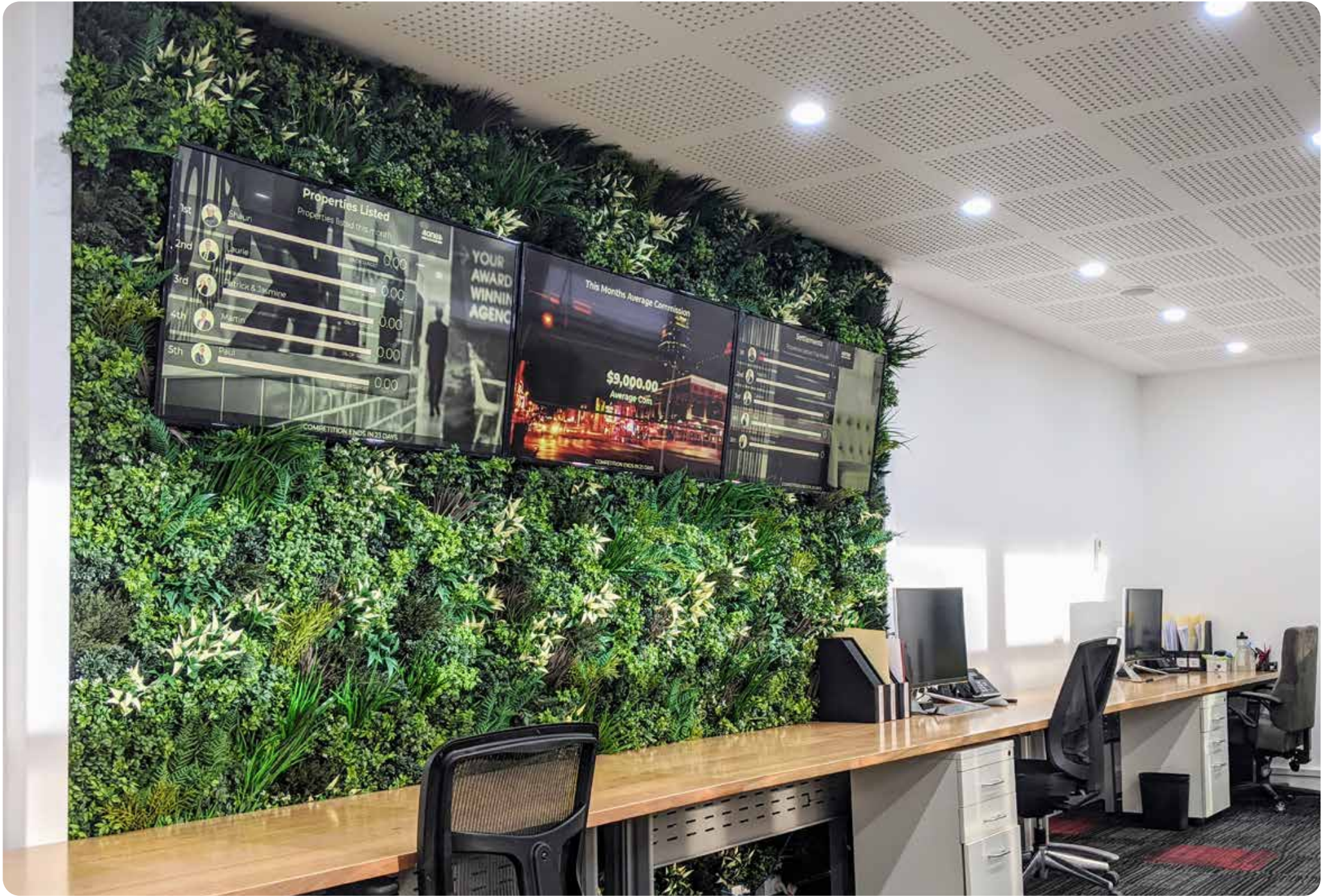












Properties Listed
Properties listed this month

Rank	Name	Commission
1st	Shaun	0.00
2nd	Laurie	0.00
3rd	Patrick & Sarjine	0.00
4th	Martin	0.00
5th	Paul	0.00

COMpetition ENDS IN 23 DAYS

YOUR AWARD WINNING AGENCY

This Month's Average Commission
\$9,000.00
Average Cost

Performance

Rank	Name	Commission
1st	Shaun	0.00
2nd	Laurie	0.00
3rd	Patrick & Sarjine	0.00
4th	Martin	0.00
5th	Paul	0.00



















GET IN TOUCH

PHONE

(02) 9817 3002

EMAIL

info@evergreenwalls.com.au

ADDRESS

[48 Winbourne Road](#)
[Brookvale NSW 2100](#)
[Australia](#)

WEBSITE

www.evergreenwalls.com.au

SOCIAL



evergreenwalls



evergreen_walls



evergreenwalls



evergreenwalls



evergreen-walls

