



DefendX Software Vision

Data Collection Agent™ for Hitachi®

Installation Guide

Version 9.1

This guide provides quick instructions for the installation of DefendX Software Data Collection Agent™ for NAS, Hitachi® Edition from an administrator's perspective. Upon completion of the steps within this document, DefendX Software Data Collection Agent for NAS, Hitachi Edition will be installed within your enterprise community.

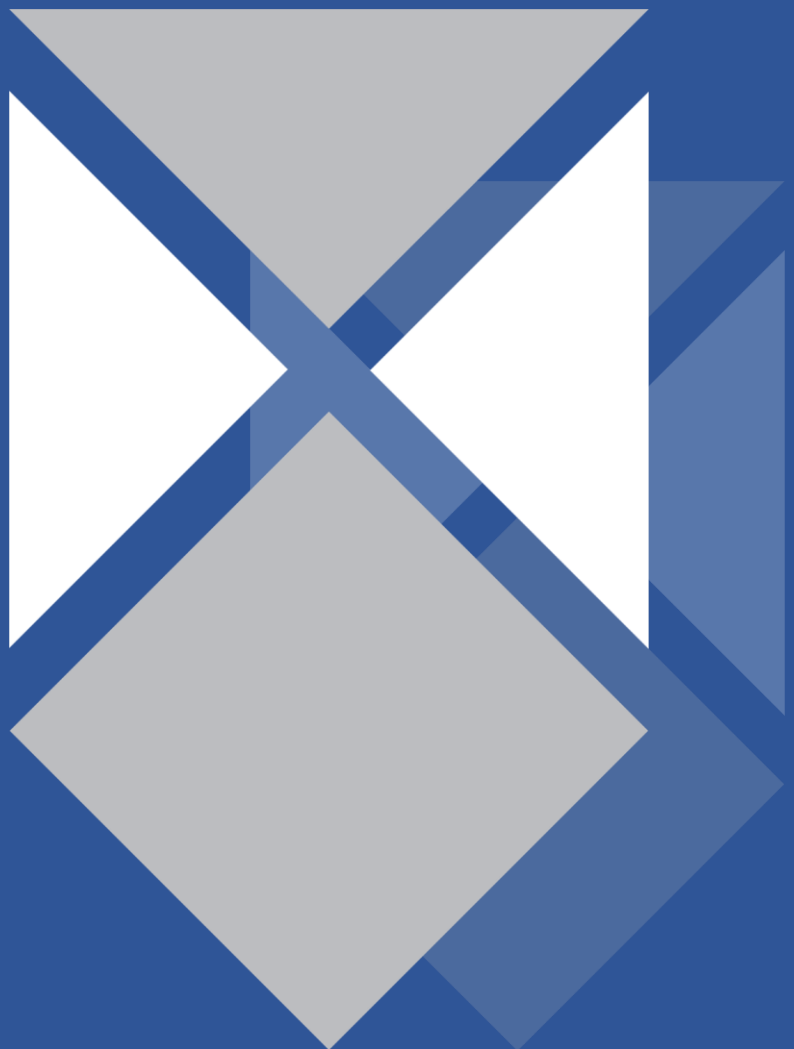


Table of Contents

Executive Summary	3
Before You Begin	3
Requirements	4
Hardware Specification.....	4
Software Specification	4
Installation	5
Installing Data Collection Agent, Hitachi Edition	5
About DefendX Software.....	13
DefendX Software Professional Services	13
Legal & Contact Information.....	14

Executive Summary

Thank you for your interest in DefendX Software Data Collection Agent™ for NAS, Hitachi Edition. DefendX Software Data Collection Agent, Hitachi Edition is a critical component of an overall file data management (FDM) architecture and is part of the DefendX Software integrated suite of products. Together, these products are designed to help organizations control and report on their current and ever-growing storage infrastructure.

This document is a guide to the successful installation of DefendX Software Data Collection Agent, Hitachi Edition. It will take you about 15 minutes to complete the installation steps provided here.

Before You Begin

The hardware required to support DefendX Software Data Collection Agent, Hitachi Edition should be appropriate for the services running on the machine. For more specific hardware information, review the *Requirements* section of this document.

DefendX Software recommends using a single service account for installing DefendX Software Data Collection Agent, Hitachi Edition. This account requires local administrator rights on each machine where DefendX Software Data Collection Agent, Hitachi Edition is installed and on each HNAS that the agent will scan, in addition to permission to write to the database.

Requirements

Hardware Specification

Each DefendX Software Data Collection Agent, Hitachi Edition server must meet the following minimum requirements prior to installation:

- 2.2 GHz CPU
- 4 GB RAM
- 20 MB free disk space

Each agent requires 20 MB for installation files and additional disk space for scan caching. The amount of disk space required for scan caching scales depending on the amount of disk space that the agent is configured to scan. DefendX Software recommends reserving 1 GB of additional disk space for this scan caching.

Software Specification

Each agent server must be running:

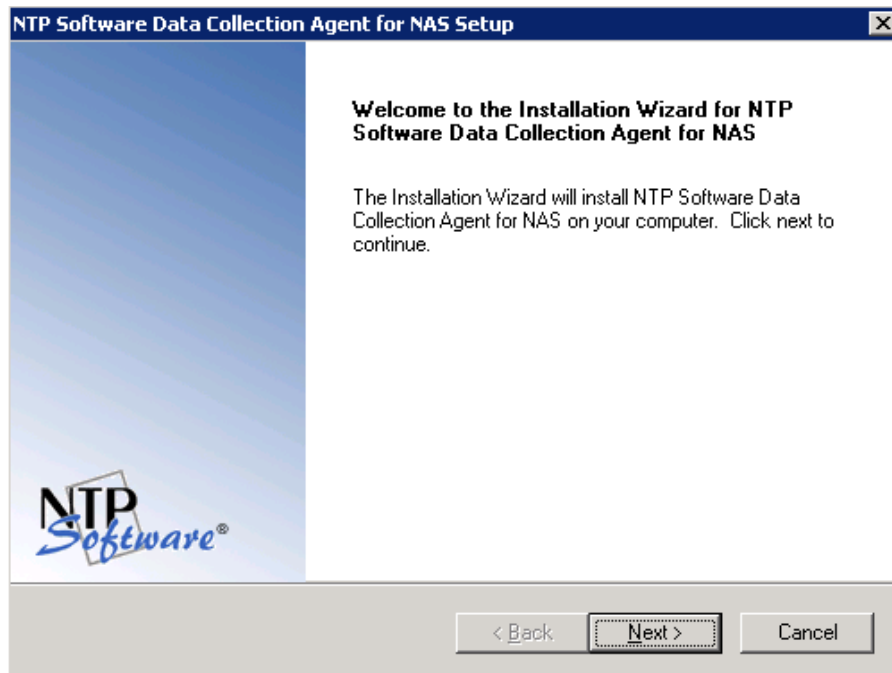
- Windows Server® 2008, Windows Server® 2008 R2, Windows Server® 2012, or Windows Server® 2012 R2 with administrator privileges.

Installation

Prior to installing DefendX Software Data Collection Agent, Hitachi Edition, DefendX Software recommends verifying that the installation server meets the requirements listed in the *Requirements* section of this document.

Installing Data Collection Agent, Hitachi Edition

1. Log on to your Windows Server® 2008, Windows Server® 2008 R2, Windows Server® 2012, or Windows Server® 2012 R2 machine using an account with administrator privileges.
2. Launch the **Setup.exe** file.
3. When the **Welcome** dialog box appears, click **Next**.



4. In the **License Agreement** dialog box, read the end-user license agreement. If you agree to the terms, select **I accept the terms of the license agreement** and then click **Next**. If you do not accept the terms, click **Cancel** to exit the installation.

NTP Software Data Collection Agent for NAS Setup

License Agreement

Please read the following license agreement carefully.

NTP Software File Reporter(TM) Terabyte License Agreement

IMPORTANT. PLEASE READ CAREFULLY. By using or copying the accompanying software you are indicating your acceptance of the terms of this license and agree to be bound by it. IF YOU DO NOT AGREE TO THE TERMS OF THIS LICENSE, YOU MUST NOT INSTALL OR USE THE PRODUCT. You may return the product UNUSED to your place of purchase for a refund of your license fee.

GRANT OF LICENSE. NTP Software(R) grants you the right to use NTP Software File Reporter(TM), ("the PRODUCT") on the number of computers and/or virtual machines for which you have paid a license fee, provided the use is solely for your personal or your company's own internal use. Furthermore, you may only use the PRODUCT to manage the

I accept the terms of the license agreement

I do not accept the terms of the license agreement

InstallShield

< Back Next > Cancel

5. In the **User Information** dialog box, provide your company name and serial number, or select the **Install Evaluation Version** option if you are installing a trial version of the software. Click **Next**.

NTP Software Data Collection Agent for NAS Setup

User Information

Enter your registration information.

Please enter the name of the company for whom you work and select whether you want to install an evaluation version or the production version.

Company Name: My Company

Install Evaluation Version

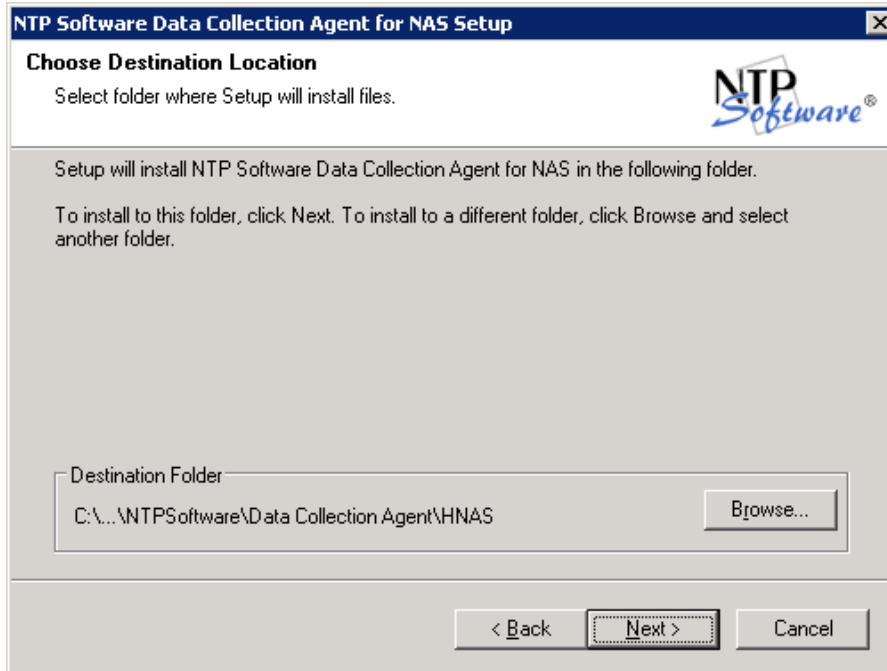
Install Production Version

Serial Number: SERIAL NUMBER

InstallShield

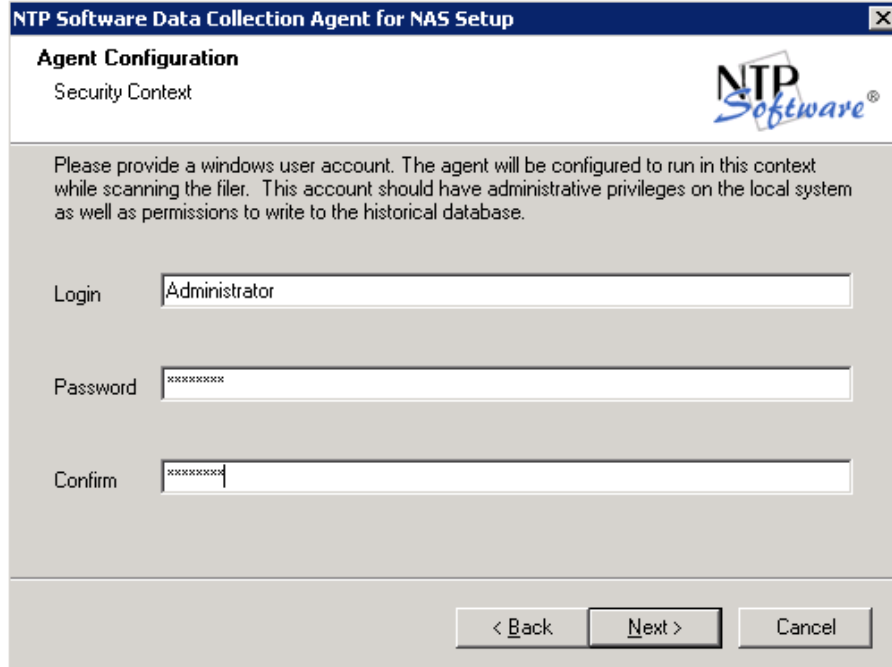
< Back Next > Cancel

6. In the **Choose Destination Location** dialog box, specify the destination location for the installed software. Click **Next**.



7. In the **Agent Configuration** dialog box, you will be prompted for a Windows domain user account to run the agent. Enter the username and password for a domain user account with administrative rights on the Filer, as well as read/write privileges for the DefendX Software Data Collection Agent for NAS, Hitachi Edition database. Click **Next**.

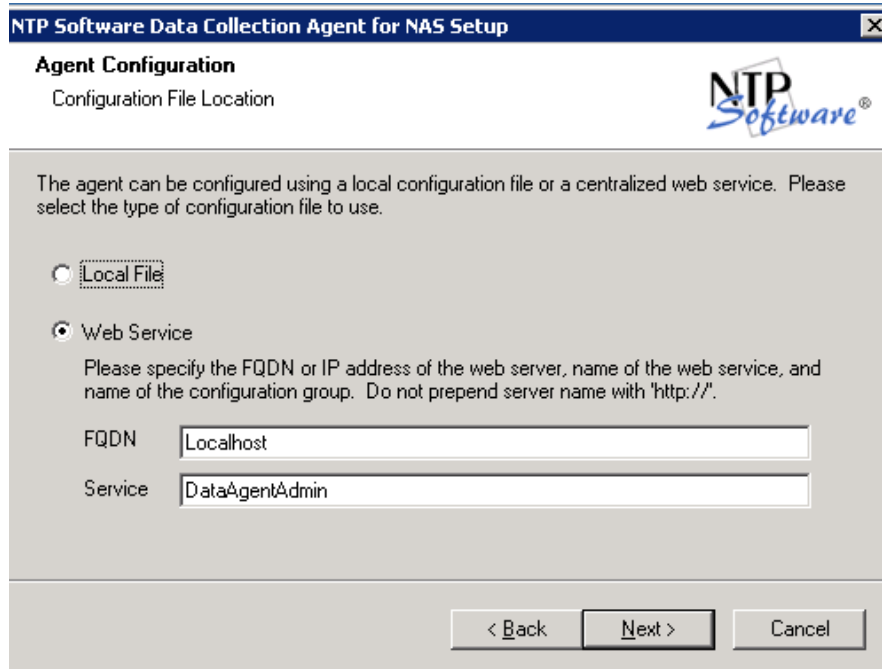
NOTE: The service account must be a member of the Backup Operators group on the HNAS



The screenshot shows a Windows-style dialog box titled "NTP Software Data Collection Agent for NAS Setup". The main heading is "Agent Configuration" with a sub-heading "Security Context". The NTP Software logo is in the top right. The text reads: "Please provide a windows user account. The agent will be configured to run in this context while scanning the filer. This account should have administrative privileges on the local system as well as permissions to write to the historical database." There are three input fields: "Login" with "Administrator", "Password" with "*****", and "Confirm" with "*****". At the bottom are buttons for "< Back", "Next >", and "Cancel".

8. In the **Agent Configuration** dialog box, determine whether you will use a local or web location for the agent configuration file. If you select the **Web Service** option, enter the IP address or fully qualified domain name (FQDN) of the web server and the service (the default is DataAgentAdmin). Click **Next**.

NOTE: If you selected the local file option, please make sure to add the configuration manually. Automatic scans and administration site configuration won't be available in case of local file selection.



The screenshot shows a Windows-style dialog box titled "NTP Software Data Collection Agent for NAS Setup". The main heading is "Agent Configuration" with the subtitle "Configuration File Location". The NTP Software logo is in the top right. The text reads: "The agent can be configured using a local configuration file or a centralized web service. Please select the type of configuration file to use." There are two radio buttons: "Local File" (unselected) and "Web Service" (selected). Below "Web Service" is a note: "Please specify the FQDN or IP address of the web server, name of the web service, and name of the configuration group. Do not prepend server name with 'http://'." There are two text input fields: "FQDN" containing "localhost" and "Service" containing "DataAgentAdmin". At the bottom are three buttons: "< Back", "Next >", and "Cancel".

9. In the **Database Selection** dialog box, select which database to use. If you use **Microsoft SQL Server**, enter the server name and the database name. However, if you use **MSDE**, specify the database to be used. Click **Next**.

NTP Software Data Collection Agent for NAS Setup

Database Selection
Please select which database to use.

The NTP Software Data Collection Agent uses SQL Server for temporary processing. Please select whether an already installed instance of SQL Server or MSDE will be used. A named instance of MSDE will be installed if it is chosen.

Microsoft SQL Server

Server: MySQLServer
Database: DataAgentHNAS_CLTESTBOX

MSDE

Database: DataAgentHNAS

< Back Next > Cancel

10. If you specified **Microsoft SQL Server** on the **Database Selection** dialog, the **Question** dialog box will follow. In the **Question** dialog box, you will be prompted to enable the software to create the database and tables automatically. If you select **Yes**, the database and tables will be created in locations that you selected in the previous step. If you select **No**, the installation is pointed to the previously created database.

Question

Do you want setup to create the database and tables automatically?

Yes No

11. In the **SQL Security** dialog box, specify which security settings you want to use to connect to the SQL server. If you select **SQL Security**, enter the username and the password needed to connect to the SQL server. Click **Next**.

NTP Software Data Collection Agent for NAS Setup

SQL Security

Please specify the security settings for connecting to sql server to create the database and tables.

Integrated Security

SQL Security

User Name: sa

Password: _____

Confirm: _____

< Back Next > Cancel

12. In the **Start Copying Files** dialog box, review your agent and web application configuration information. Click **Back** to make any changes; otherwise, click **Next** to begin copying the files.

NTP Software Data Collection Agent for NAS Setup

Start Copying Files

Review settings before copying files.

Setup has enough information to start copying the program files. If you want to review or change any settings, click Back. If you are satisfied with the settings, click Next to begin copying files.

Current Settings:

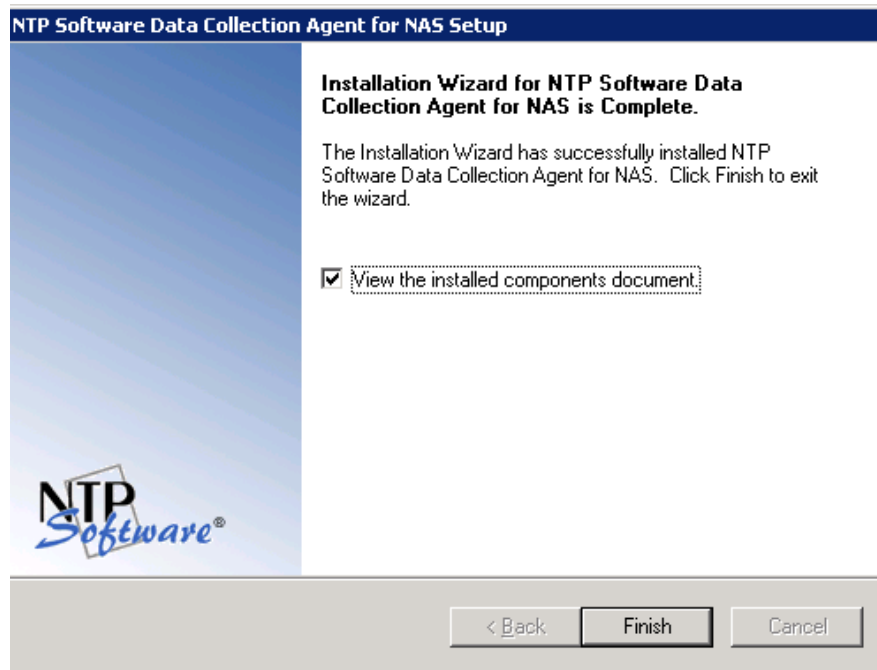
Data Collection Agent

Files will be copied to the folder C:\Program Files\NTPSoftware\Data Collection Agent\HN

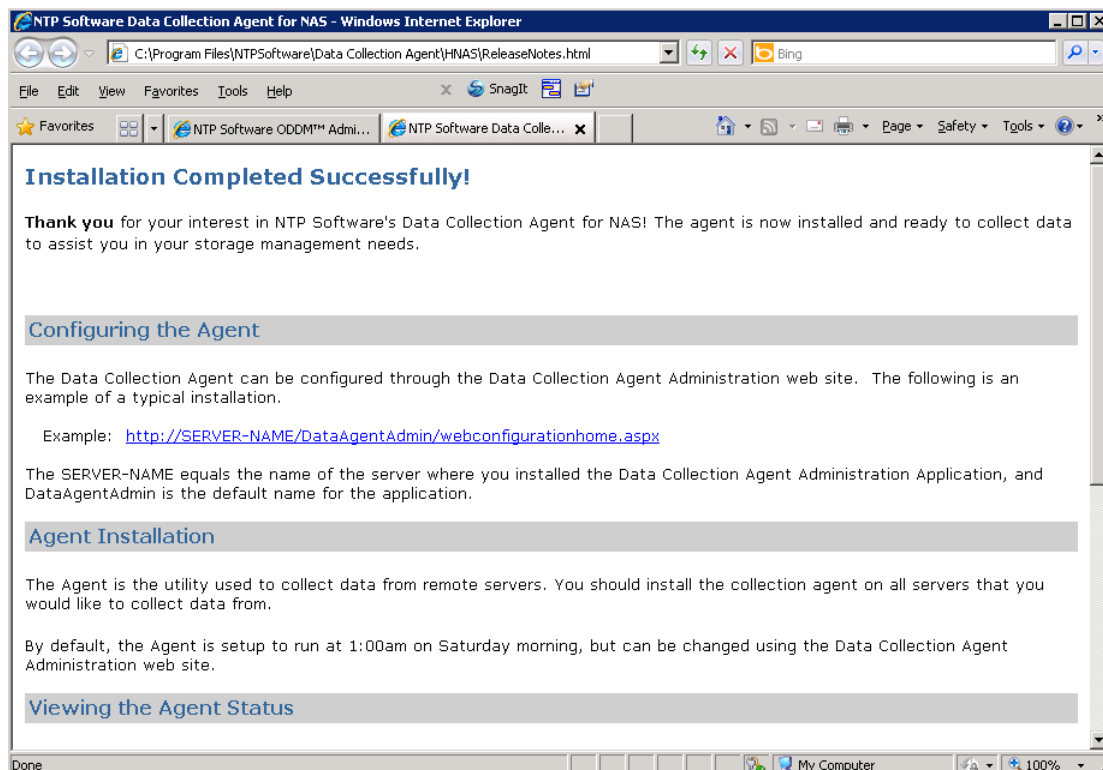
The Agent will be scheduled to run on every Saturday at 1:00AM

< Back Next > Cancel

13. When copying files is finished, a final screen informs you that the installation is complete. If you want to view a list of installed components, select the **View the installed components document** checkbox. Click **Finish** to complete the process.



NOTE: Once you are done with the DefendX Software Data Collection Agent for NAS, Hitachi Edition installation, you will need to create a corresponding configuration for the agent. For more details, please refer to the DefendX Software Vision™ User Manual.



About DefendX Software

DefendX Software helps organizations secure their critical business files and maximize the value of their enterprise file storage resources. From comprehensive intelligence, modeling, costing and chargeback to seamless file movement, protection and archiving, DefendX provides industry-leading capabilities to eliminate waste and align the value of files with the storage resources they consume. With DefendX, important file locations and the users who access them can be monitored to provide governance, protect against theft and enforce compliance policies. For more than 20 years, DefendX Software has been helping public and private sector customers around the world save money and eliminate risk every day.

DefendX Software Professional Services

DefendX Software's Professional Services offers consulting, training, and design services to help customers with their storage management challenges. We have helped hundreds of customers to implement cost-effective solutions for managing their storage environments. Our services range from a simple assessment to in-depth financial analyses.

For further assistance in creating the most cost-effective Storage Management Infrastructure, please contact your DefendX Software Representative at 800-390-6937.

Legal & Contact Information

The information contained in this document is believed to be accurate as of the date of publication. Because DefendX Software must constantly respond to changing market conditions, what is here should not be interpreted as a commitment on the part of DefendX Software, and DefendX Software cannot guarantee the accuracy of any information presented after the date of publication.

This user manual is for informational purposes only. DEFENDX SOFTWARE MAKES NO WARRANTIES, EXPRESS OR IMPLIED, IN THIS DOCUMENT.

DefendX Software and other marks are either registered trademarks or trademarks of DefendX Software in the United States and/or other countries. Other product and company names mentioned herein may be the trademarks of their respective owners.

DefendX Software products and technologies described in this document may be protected by United States and/or international patents.

DefendX Software
119 Drum Hill Road, #383
Chelmsford MA 01824
Phone: 1-800-390-6937
E-mail: info@DefendX.com
Web Site: <http://www.DefendX.com>

Copyright © 2020 DefendX Software. All rights reserved. All trademarks and registered trademarks are the property of their respective owners.

Doc#DFX1273EF