

# tilia

JAMAICA PLAIN

## BUILDING #1- 121B

121 HYDE PARK AVENUE

UNIT B - 3RD FLOOR

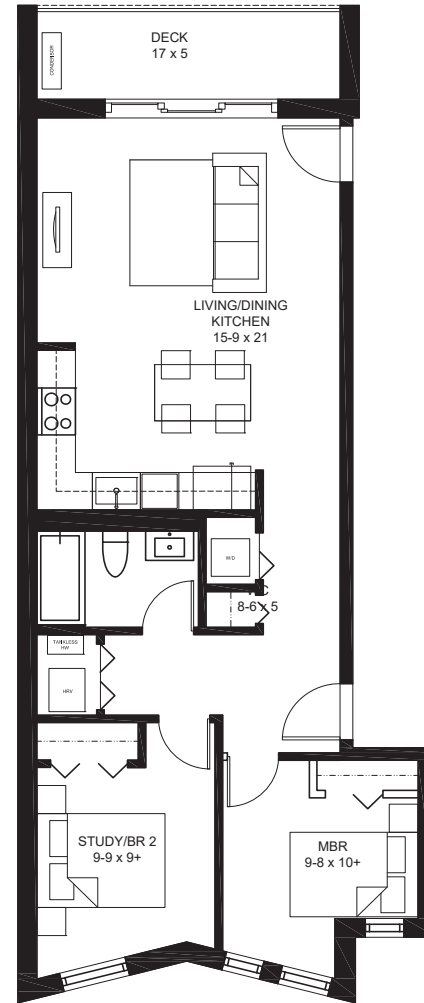
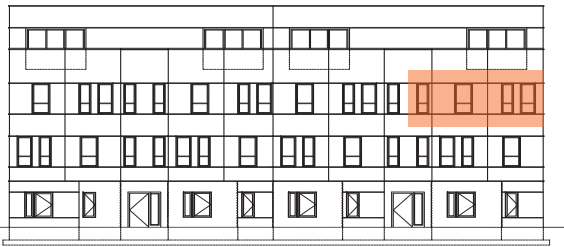
823 SQ FT +/-

2 BEDROOMS, 1 BATH

1 PARKING SPACE

1 STORAGE SPACE

DECK

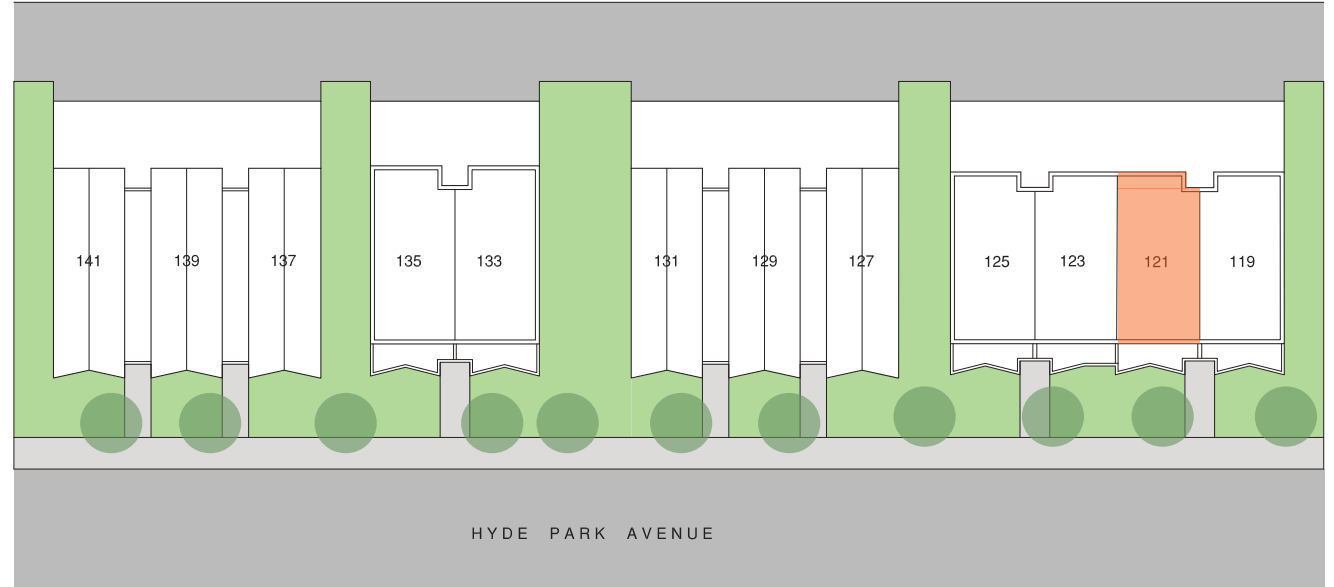


THIRD FLOOR PLAN



All dimensions, specifications, features, amenities and prices are subject to modification without notice.



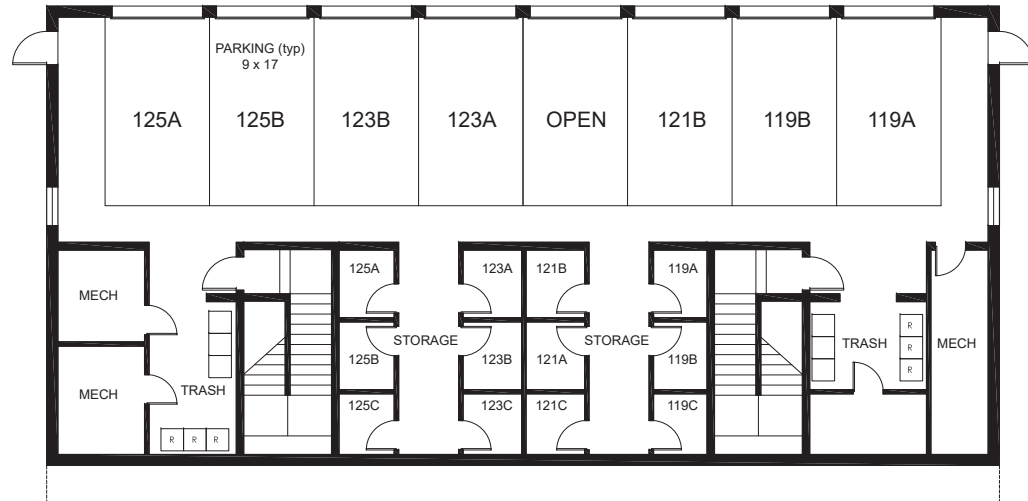


exclusively marketed by:



[www.tiliajp.com](http://www.tiliajp.com)

T: (617) 221 - 5809



BUILDING 1- BASEMENT FLOOR PLAN

