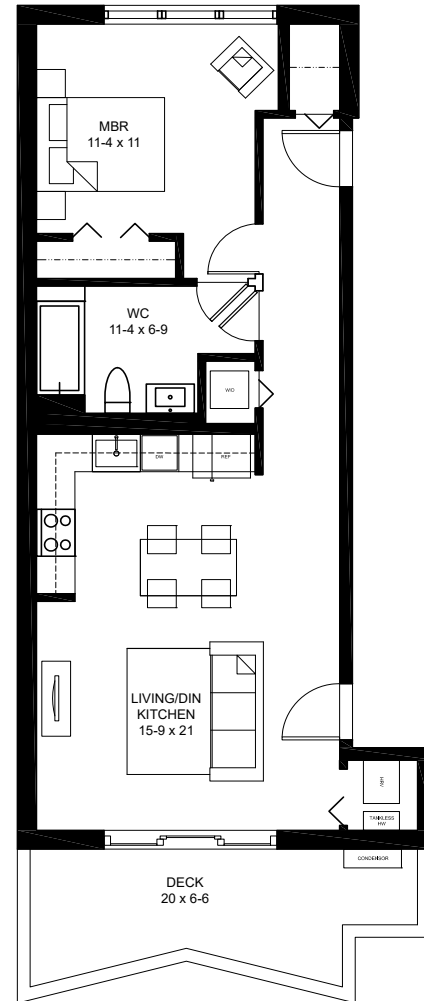
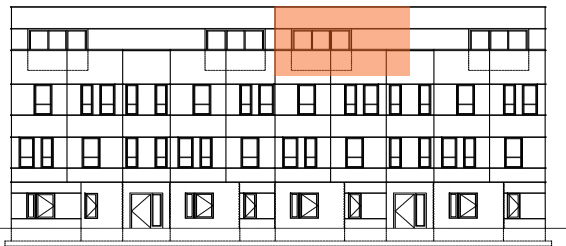


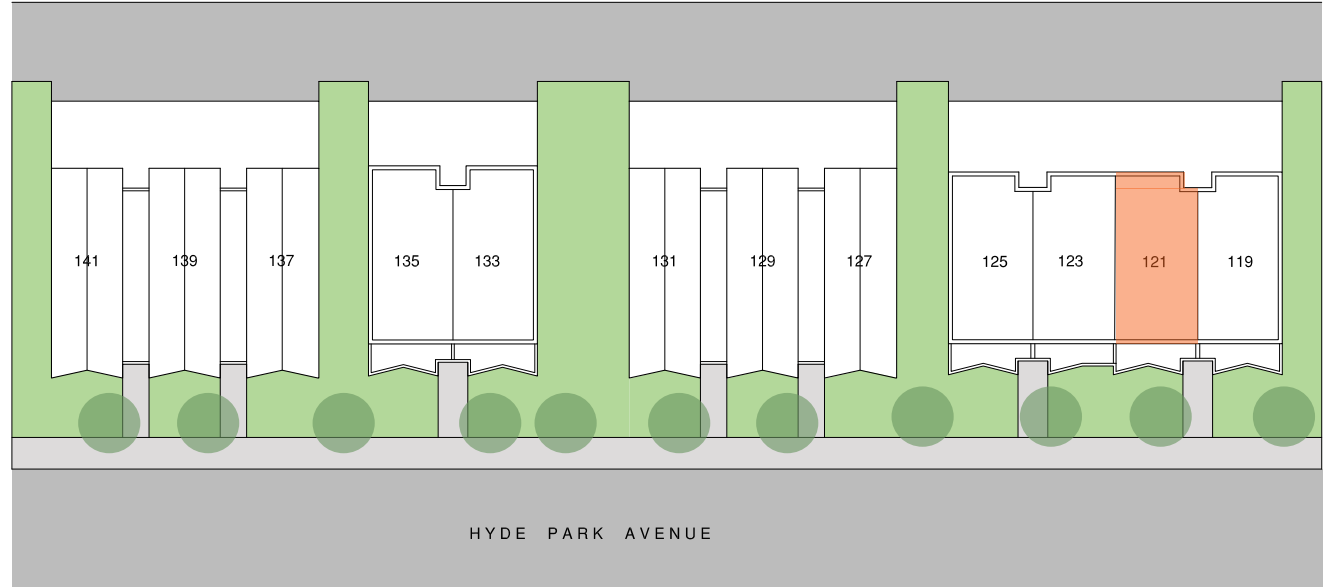
BUILDING #1- 121C
121 HYDE PARK AVENUE
UNIT C - 4TH FLOOR
768 SQ FT +/-

1 BEDROOM, 1 BATH
1 STORAGE SPACE
PRIVATE DECK- 139 SF



FOURTH FLOOR PLAN



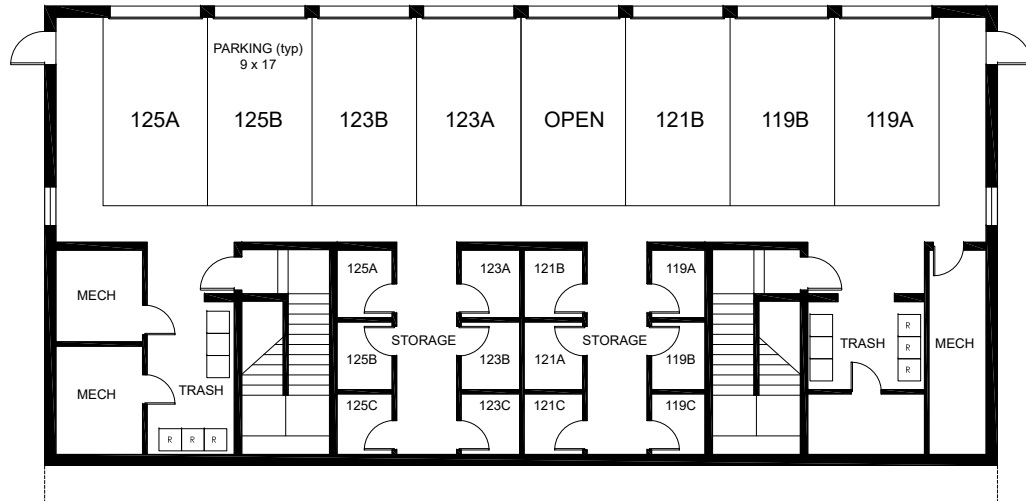


exclusively marketed by:



www.tiliajp.com

T: (617) 221 - 5809



BUILDING 1- BASEMENT FLOOR PLAN

