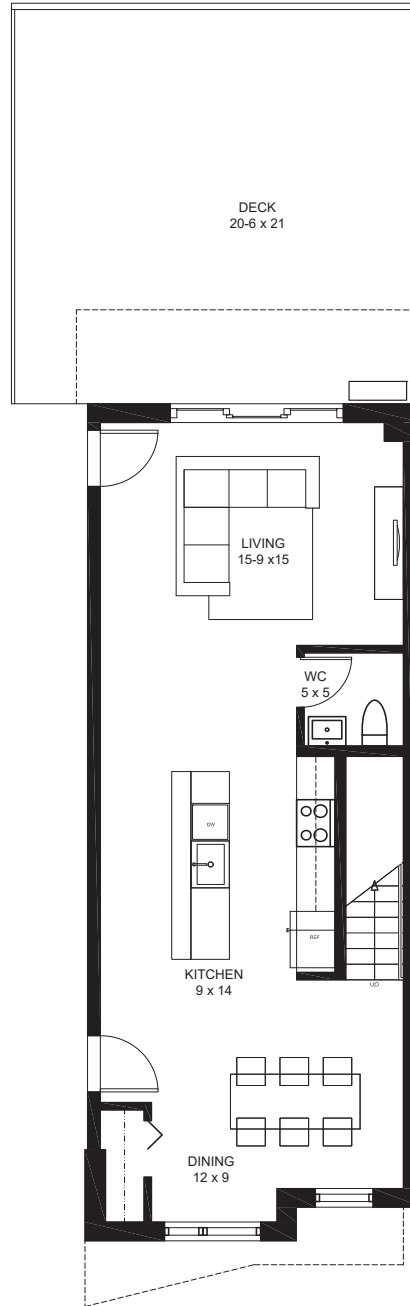
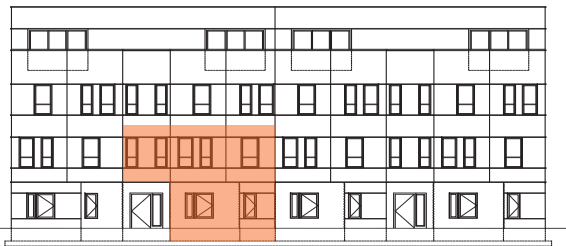


tilia

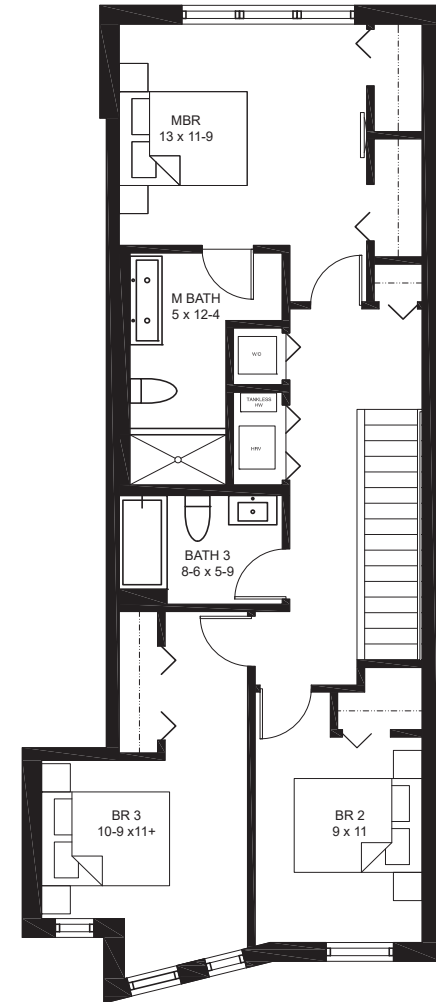
JAMAICA PLAIN

BUILDING #1- 123A
123 HYDE PARK AVENUE
UNIT A- DUPLEX-1ST/2ND FLOORS
1582 SQ FT +/-

3 BEDROOMS, 2.5 BATHS
1 PARKING SPACE
1 STORAGE SPACE
DECK

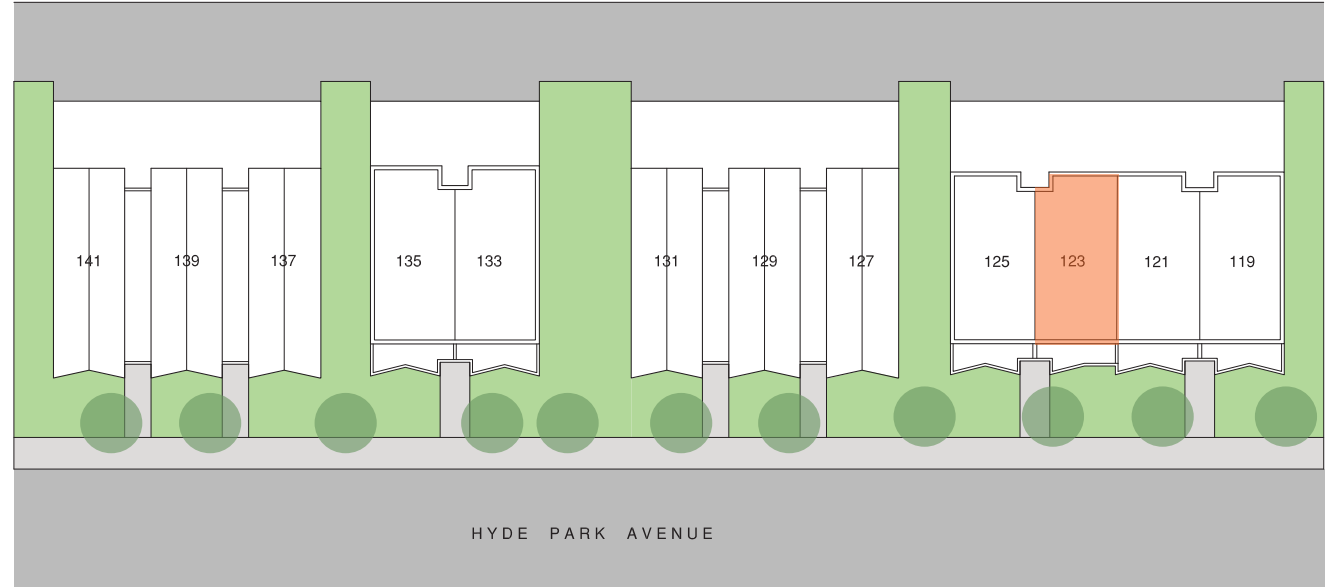


FIRST FLOOR PLAN



SECOND FLOOR PLAN



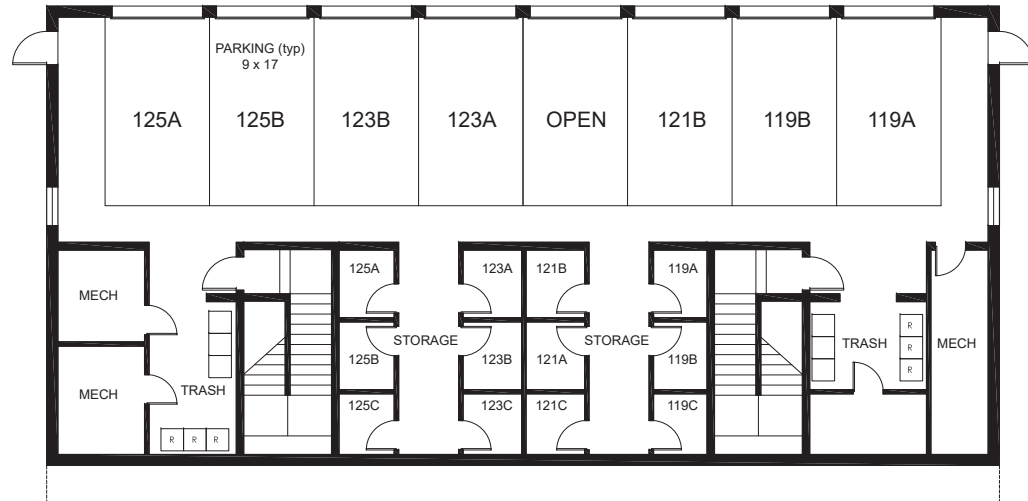


exclusively marketed by:



www.tiliajp.com

T: (617) 221 - 5809



BUILDING 1- BASEMENT FLOOR PLAN

