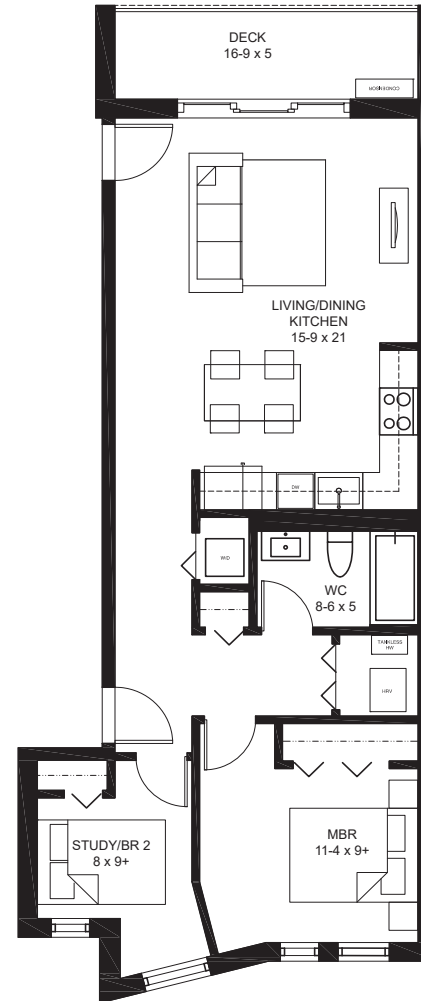
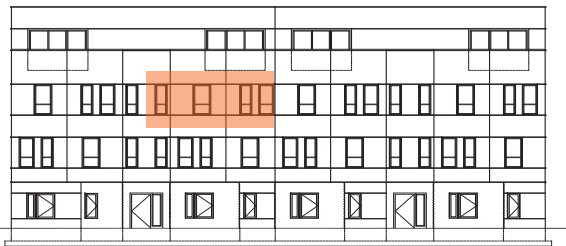


tilia

JAMAICA PLAIN

BUILDING #1- 123B
123 HYDE PARK AVENUE
UNIT B - 3RD FLOOR
814 SQ FT +/-

2 BEDROOMS, 1 BATH
1 PARKING SPACE
1 STORAGE SPACE
DECK

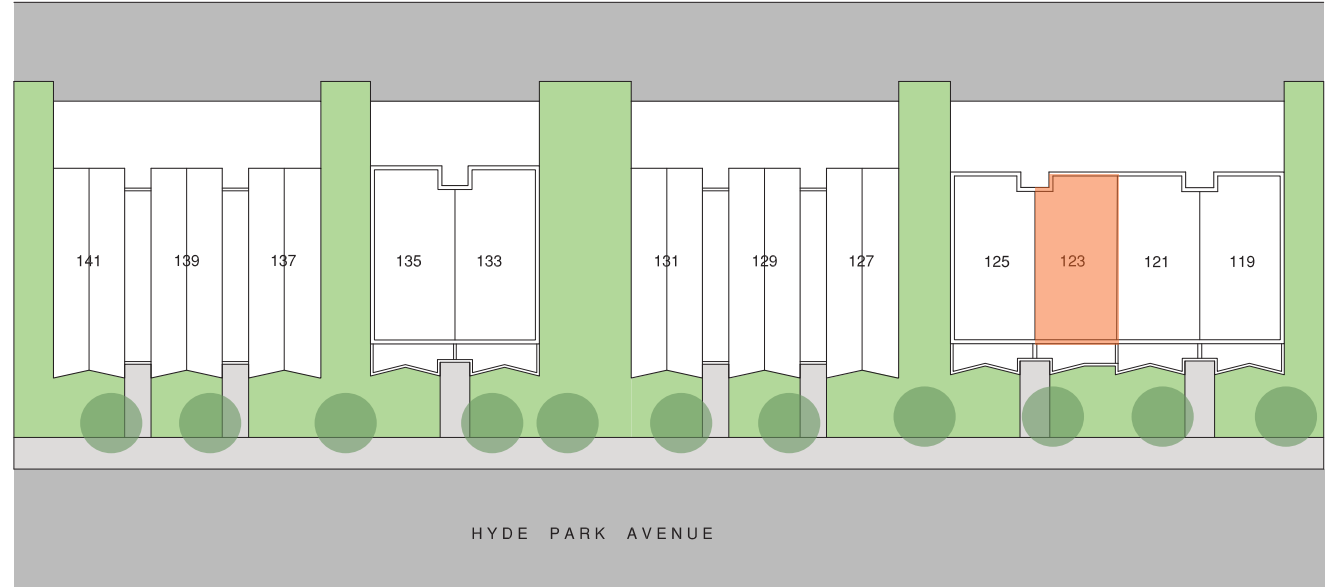


THIRD FLOOR PLAN



All dimensions, specifications, features, amenities and prices are subject to modification without notice.



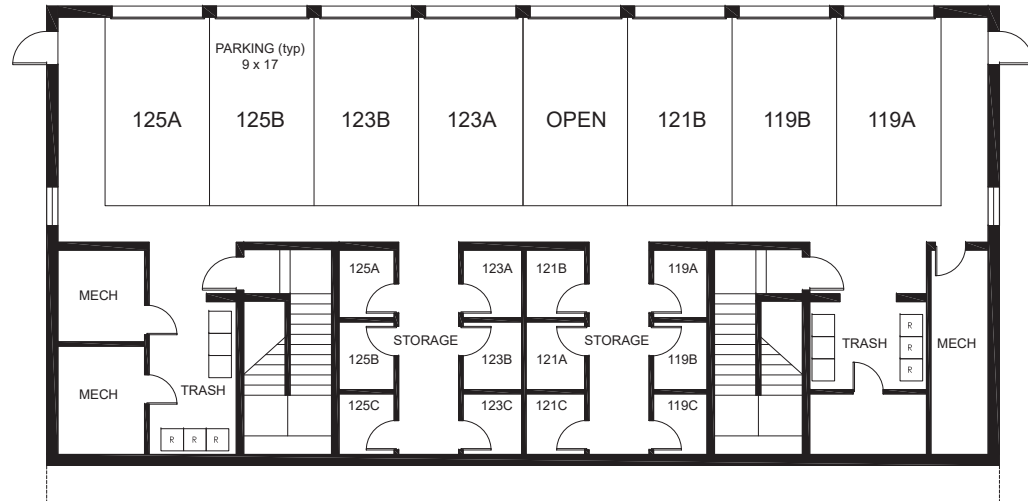


exclusively marketed by:



www.tiliajp.com

T: (617) 221 - 5809



BUILDING 1- BASEMENT FLOOR PLAN

