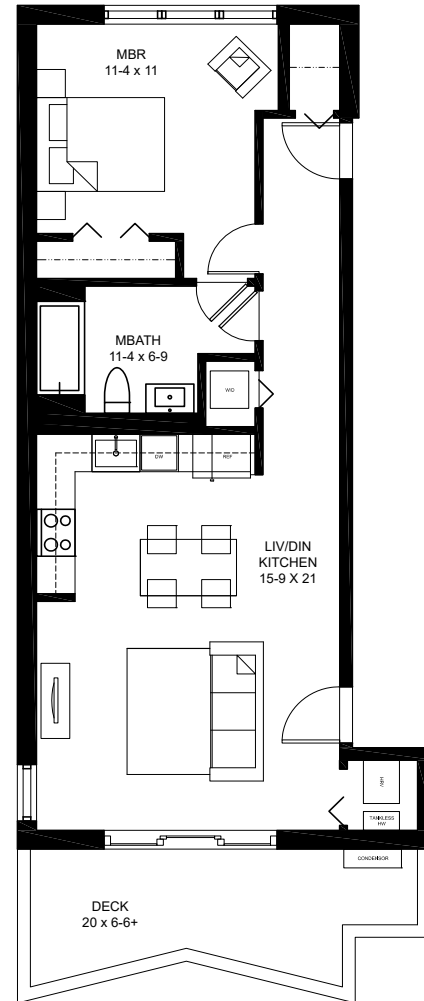
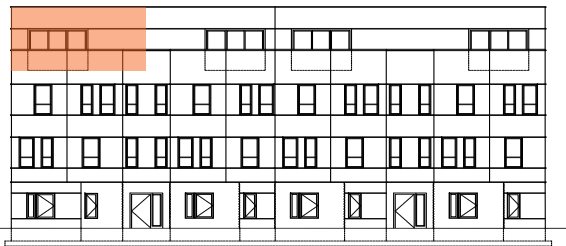


tilia

JAMAICA PLAIN

BUILDING #1- 125C
125 HYDE PARK AVENUE
UNIT C - 4TH FLOOR
790 SQ FT +/-

1 BEDROOM, 1 BATH
1 STORAGE SPACE
PRIVATE DECK- 144 SF

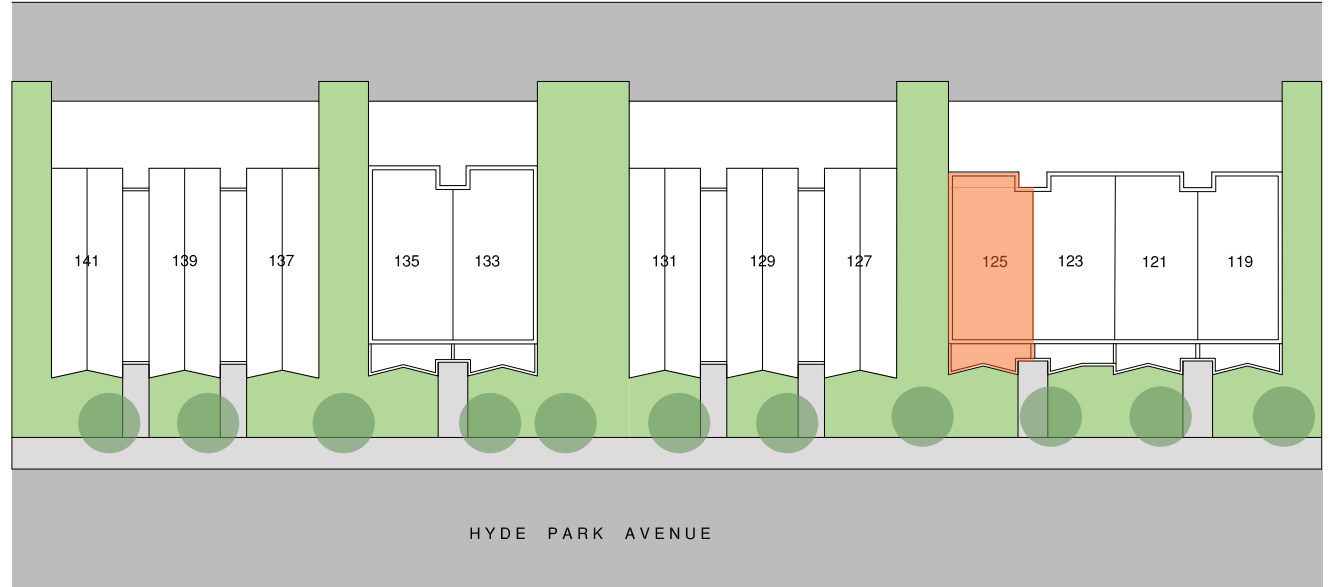


FOURTH FLOOR PLAN



All dimensions, specifications, features, amenities and prices are subject to modification without notice.



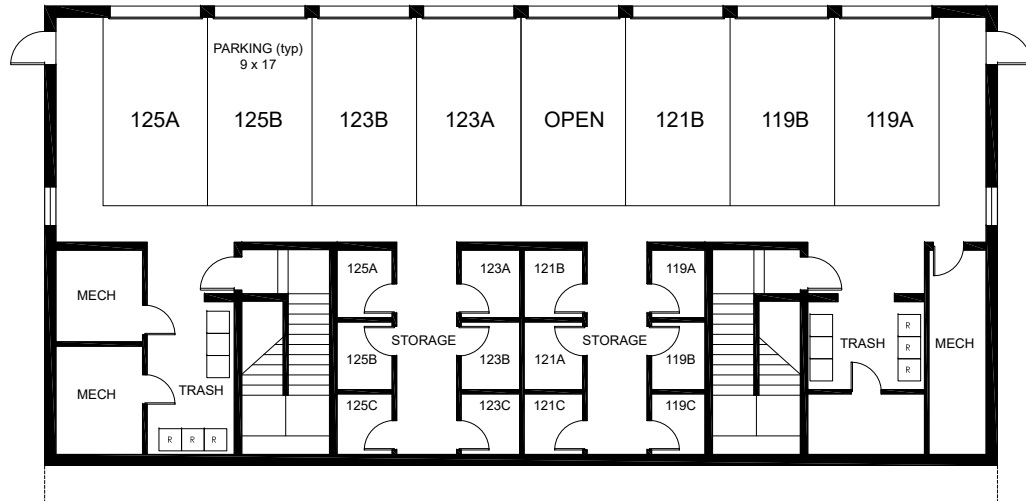


exclusively marketed by:



www.tiliajp.com

T: (617) 221 - 5809



BUILDING 1- BASEMENT FLOOR PLAN

