

tilia

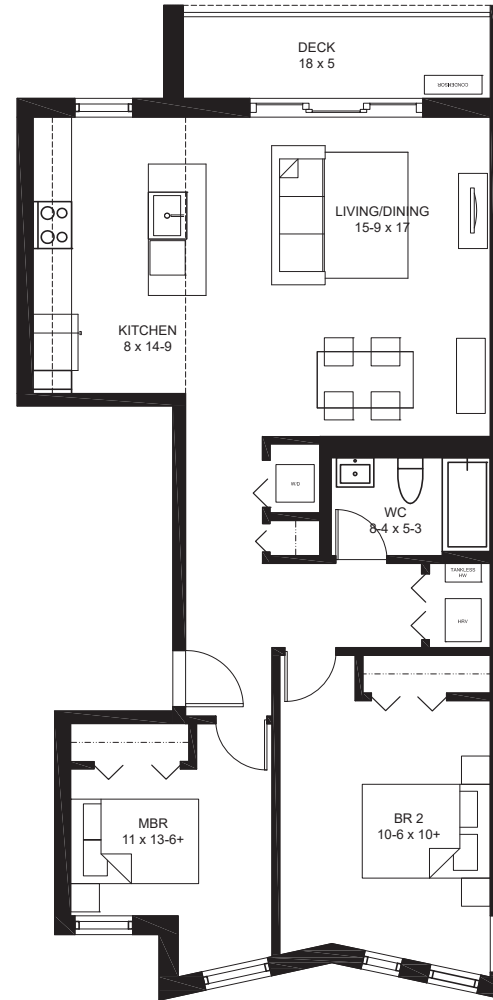
JAMAICA PLAIN

BUILDING #2- 127B
127 HYDE PARK AVENUE
UNIT B - 3RD FLOOR
1010 SQ FT +/-

2 BEDROOMS, 1 BATH
1 PARKING SPACE
1 STORAGE SPACE
DECK

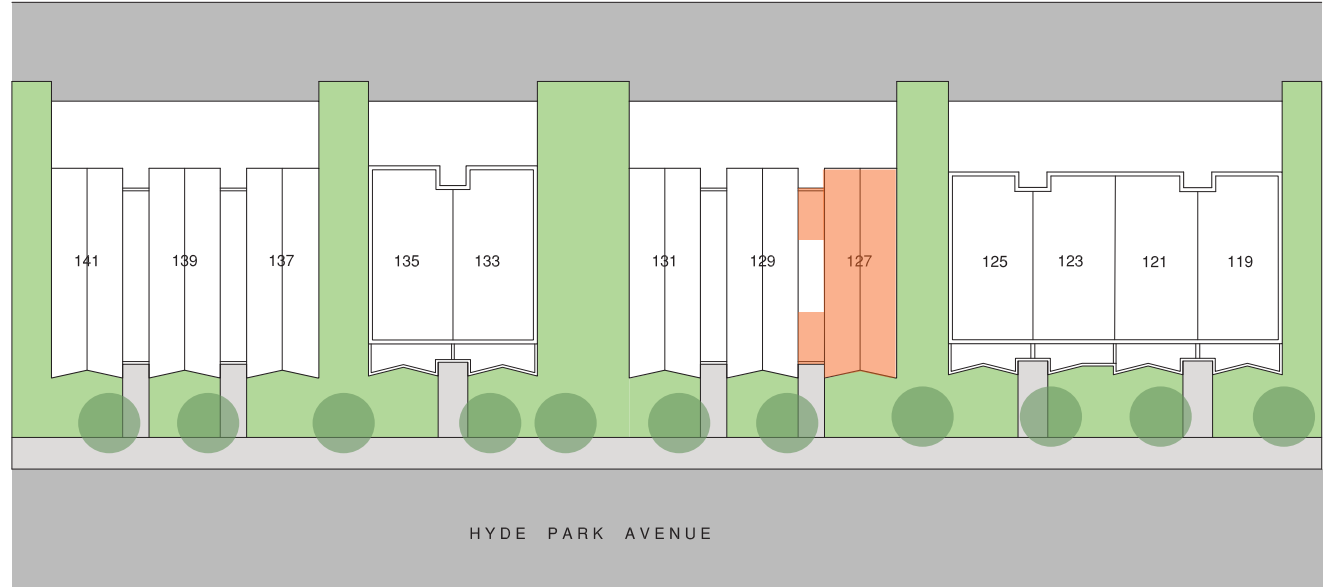


ELEVATION (not to scale)



THIRD FLOOR PLAN



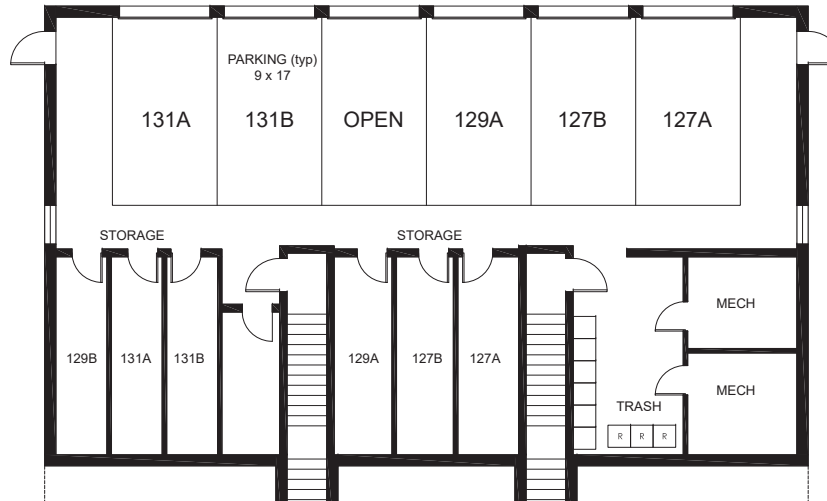


exclusively marketed by:



www.tiliajp.com

T: (617) 221 - 5809



BUILDING 2- BASEMENT FLOOR PLAN

