

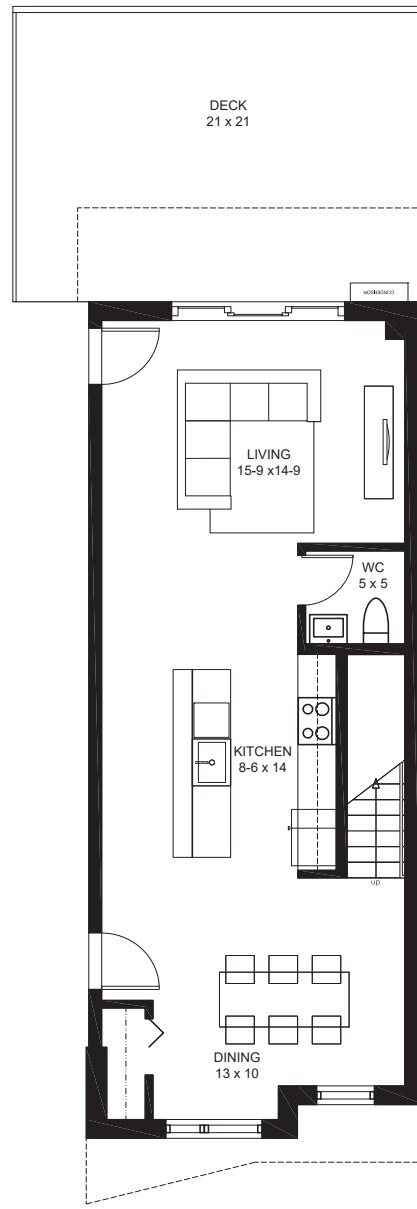
tilia

JAMAICA PLAIN

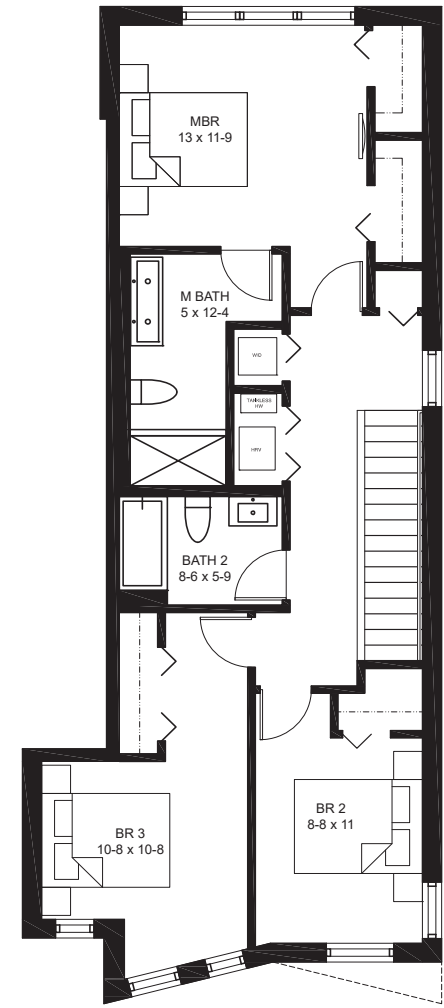
BUILDING #3- 133A
133 HYDE PARK AVENUE
UNIT A- DUPLEX-1ST/2ND FLOORS

1635 SQ FT +/-

- 3 BEDROOMS, 2.5 BATHS
- 1 PARKING SPACE
- 1 STORAGE SPACE
- DECK



FIRST FLOOR PLAN

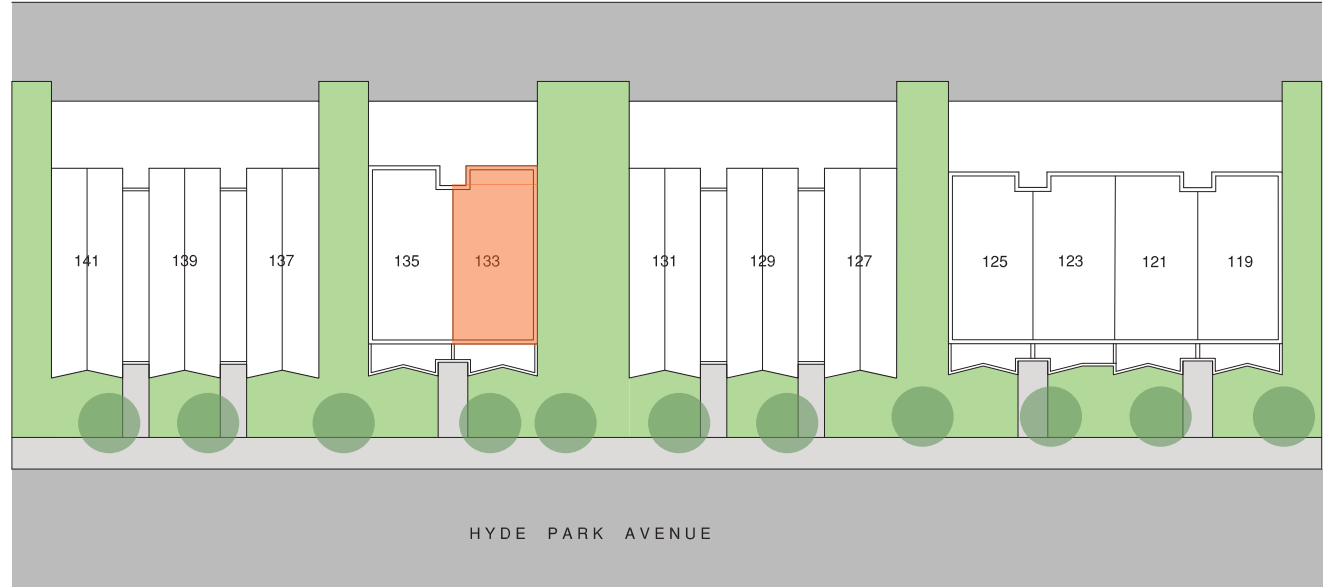


SECOND FLOOR PLAN



All dimensions, specifications, features, amenities and prices are subject to modification without notice.



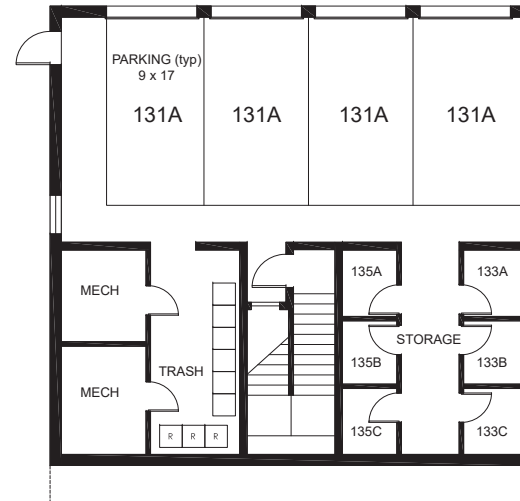


exclusively marketed by:



www.tiliajp.com

T: (617) 221 - 5809



BUILDING 3- BASEMENT FLOOR PLAN

