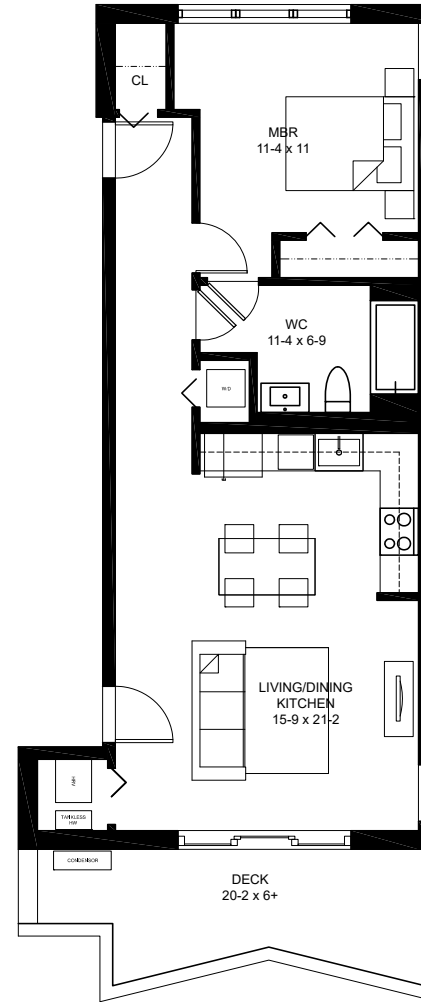
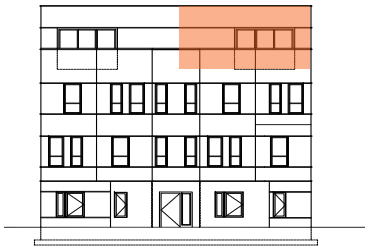


tilia

JAMAICA PLAIN

BUILDING #3- 133C
133 HYDE PARK AVENUE
UNIT C - 4TH FLOOR
792 SQ FT +/-

1 BEDROOM, 1 BATH
1 STORAGE SPACE
PRIVATE DECK- 140 SF

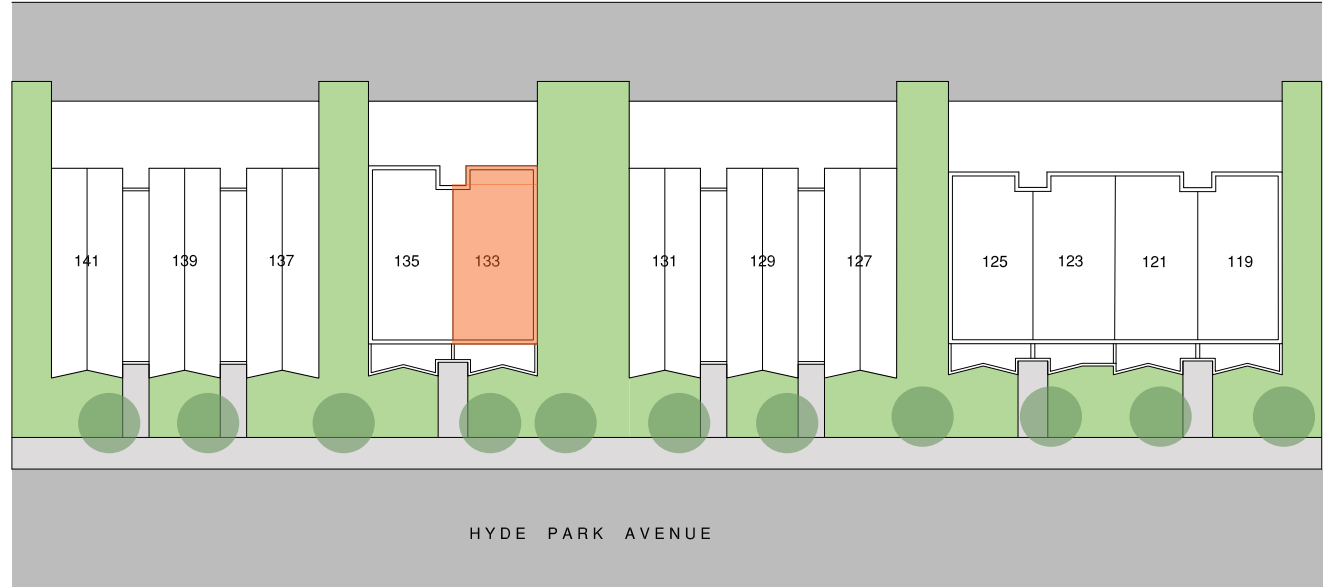


THIRD FLOOR PLAN



All dimensions, specifications, features, amenities and prices are subject to modification without notice.



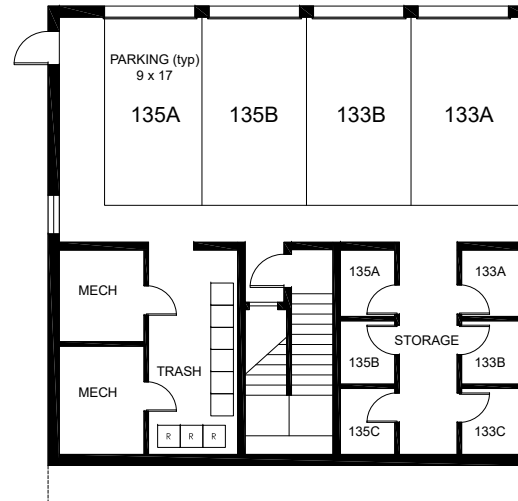


exclusively marketed by:



www.tiliajp.com

T: (617) 221 - 5809



BUILDING 3- BASEMENT FLOOR PLAN

