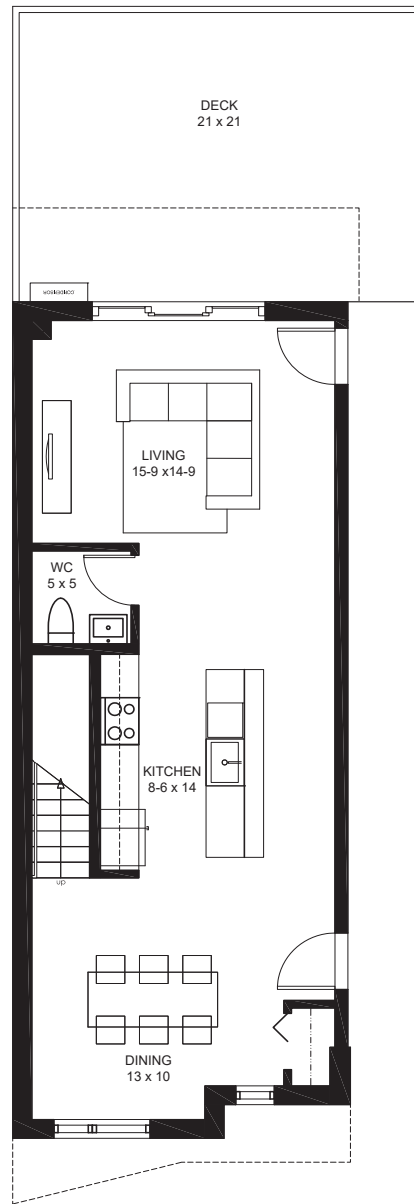
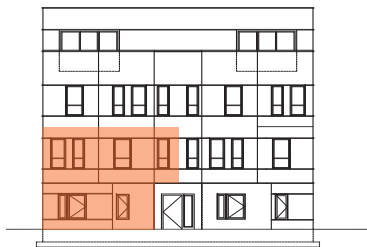


tilia

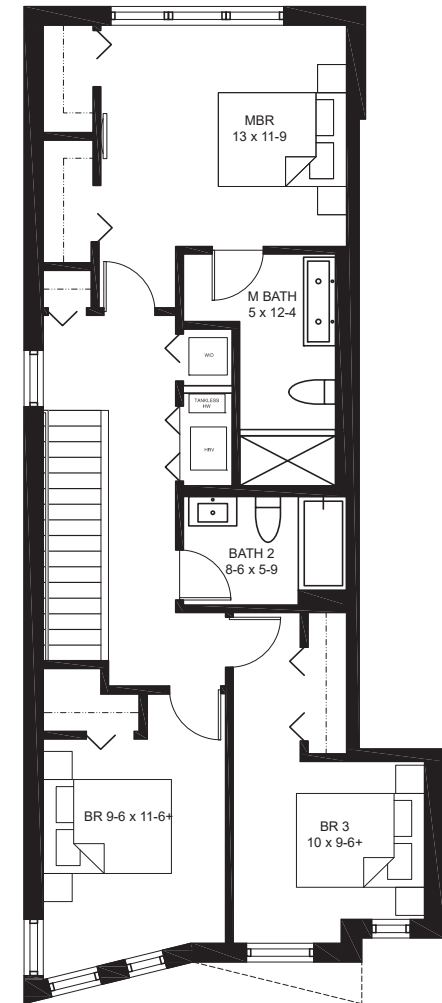
JAMAICA PLAIN

BUILDING #3- 135A
135 HYDE PARK AVENUE
UNIT A- DUPLEX-1ST/2ND FLOORS
1635 SQ FT +/-

3 BEDROOMS, 2.5 BATHS
1 PARKING SPACE
1 STORAGE SPACE
DECK



FIRST FLOOR PLAN

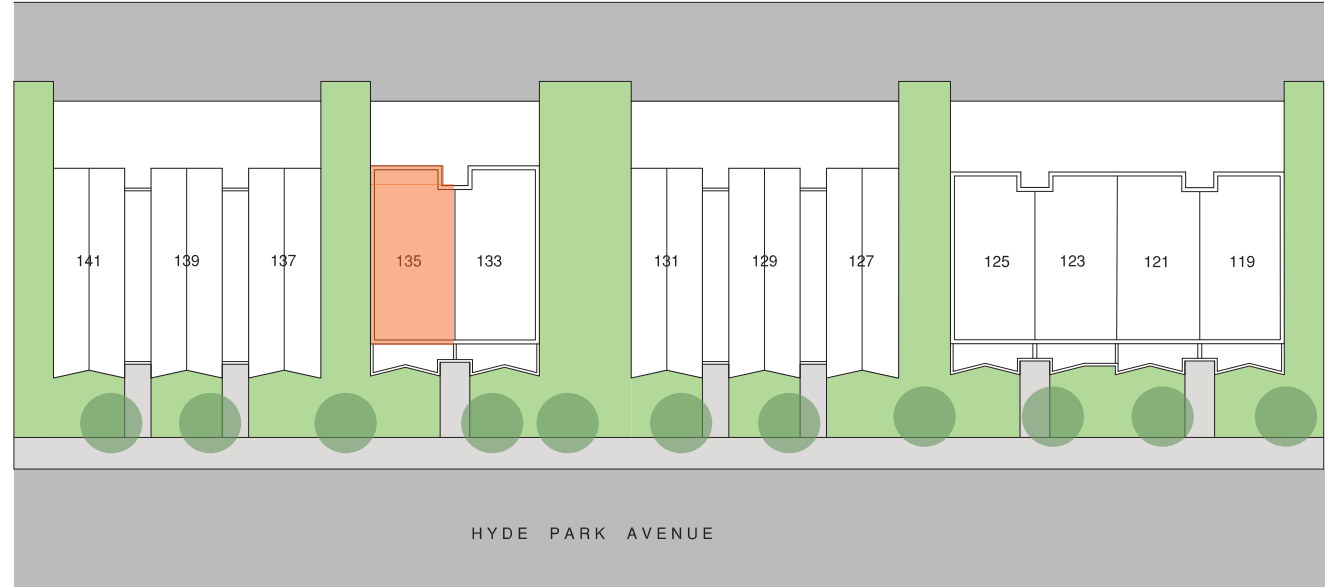


SECOND FLOOR PLAN



All dimensions, specifications, features, amenities and prices are subject to modification without notice.



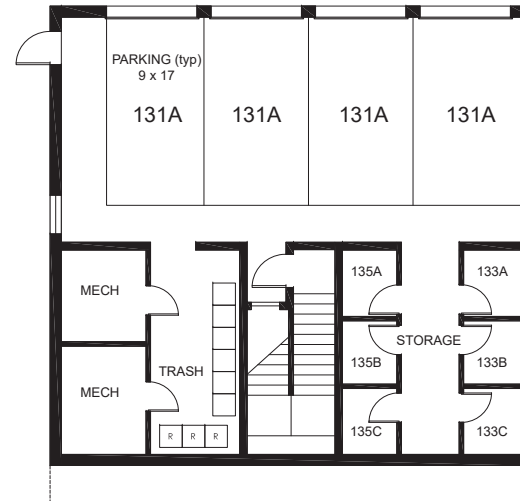


exclusively marketed by:



www.tiliajp.com

T: (617) 221 - 5809



BUILDING 3- BASEMENT FLOOR PLAN

