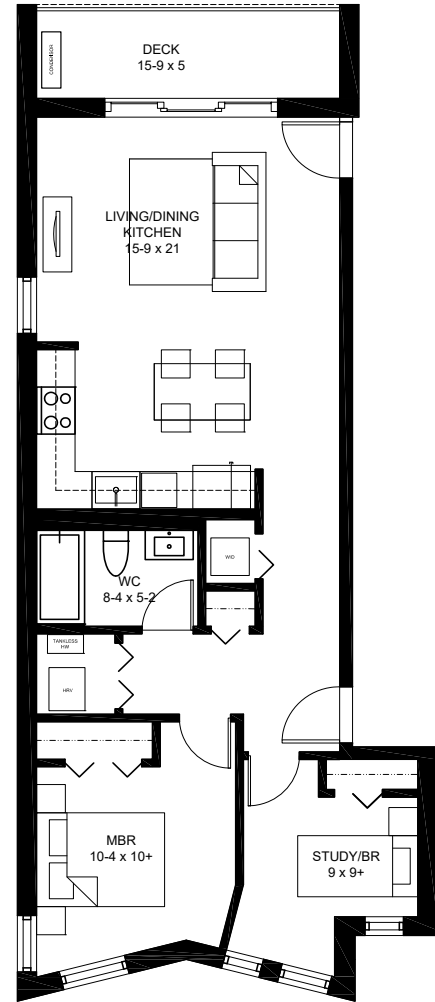
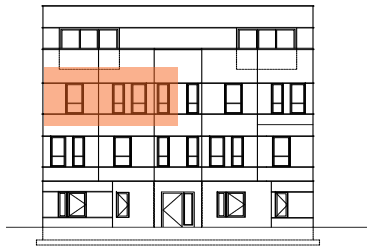


tilia

JAMAICA PLAIN

BUILDING #3- 135B
135 HYDE PARK AVENUE
UNIT B - 3RD FLOOR
846 SQ FT +/-

2 BEDROOMS, 1 BATH
1 PARKING SPACE
1 STORAGE SPACE
PRIVATE DECK- 84 SF

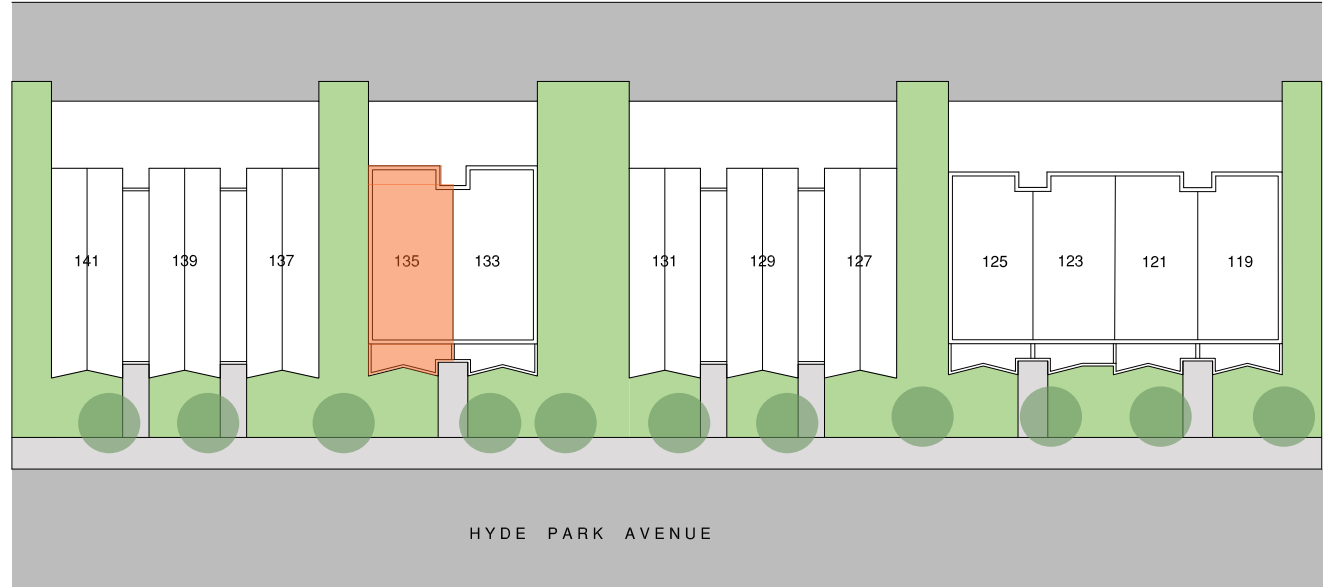


THIRD FLOOR PLAN



All dimensions, specifications, features, amenities and prices are subject to modification without notice.



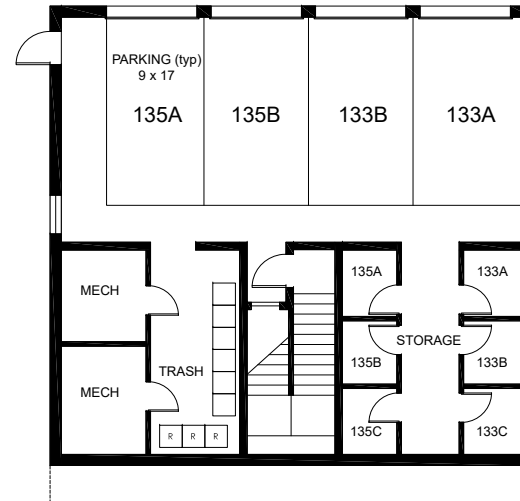


exclusively marketed by:



www.tiliajp.com

T: (617) 221 - 5809



BUILDING 3- BASEMENT FLOOR PLAN

