

tilia

JAMAICA PLAIN

BUILDING #4- 137B

137 HYDE PARK AVENUE

UNIT B - 3RD FLOOR

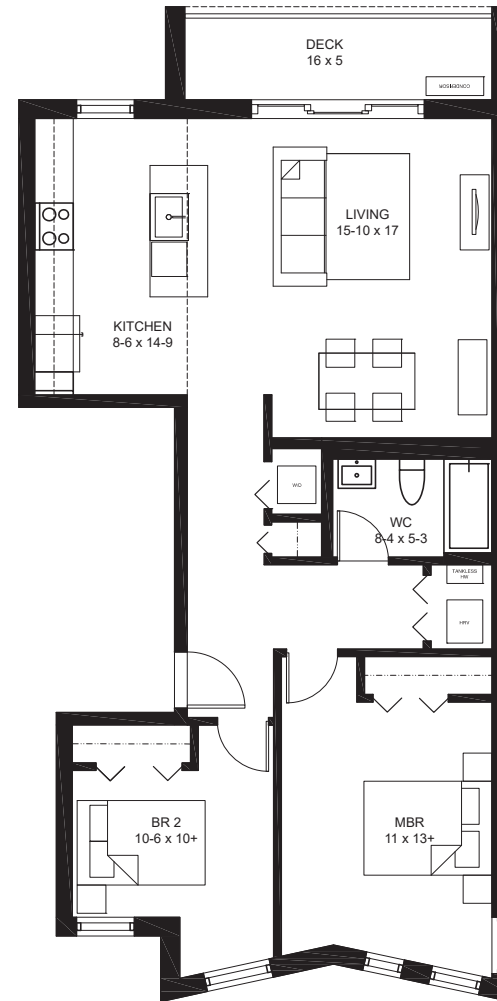
1011 SQ FT +/-

2 BEDROOMS, 1 BATHS

1 PARKING SPACE

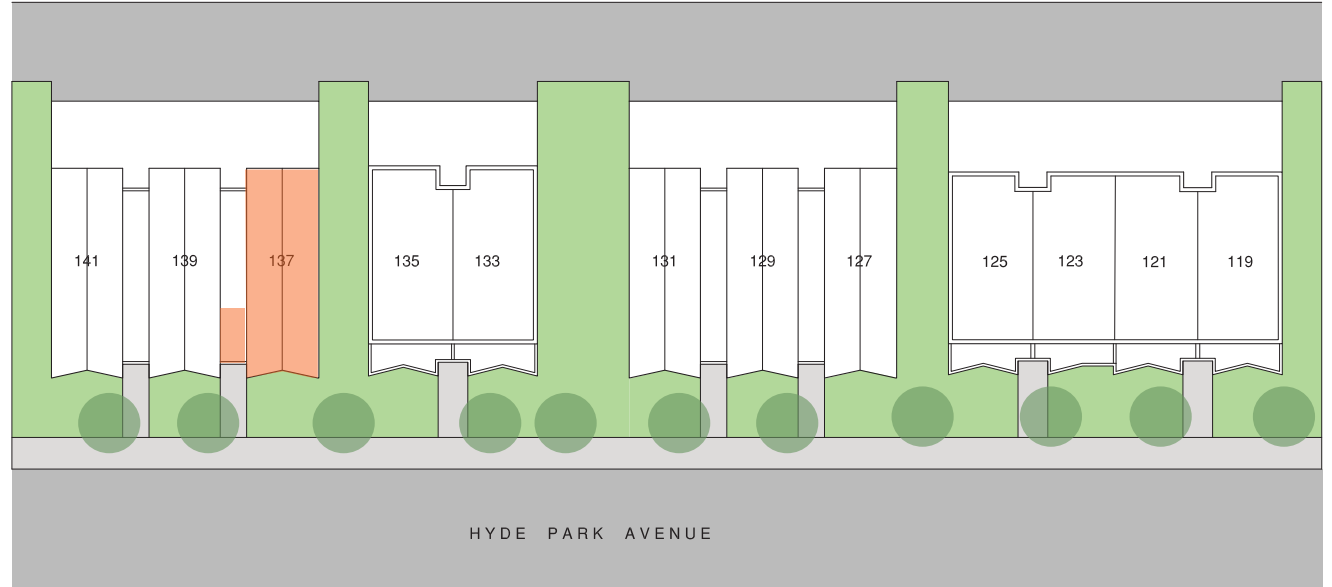
1 STORAGE SPACE

DECK



THIRD FLOOR PLAN



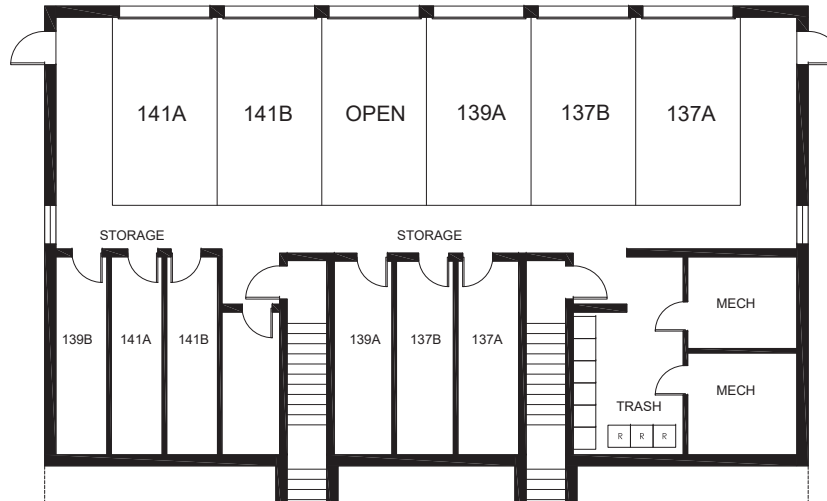


exclusively marketed by:



www.tiliajp.com

T: (617) 221 - 5809



BUILDING 4- BASEMENT FLOOR PLAN

