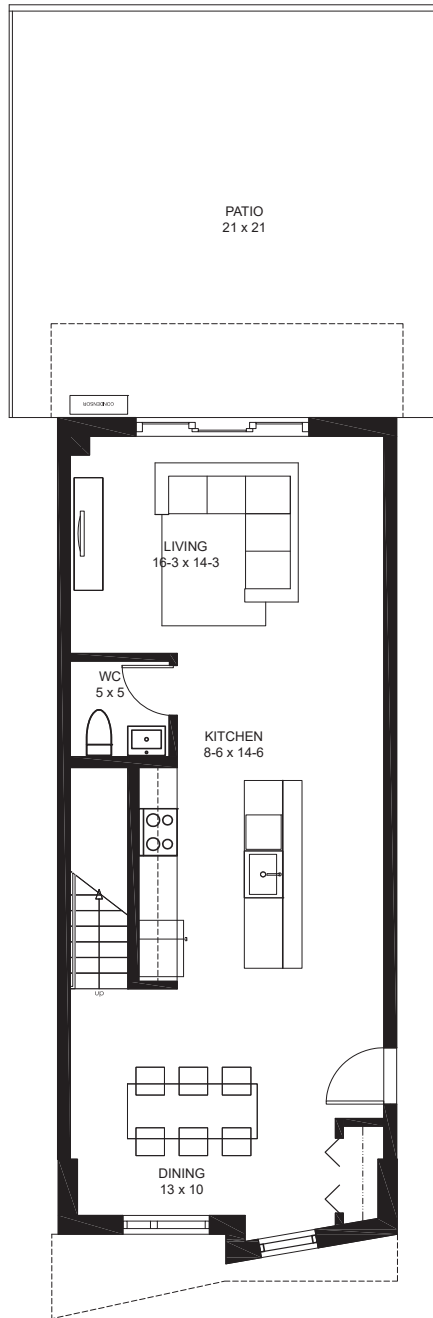


tilia

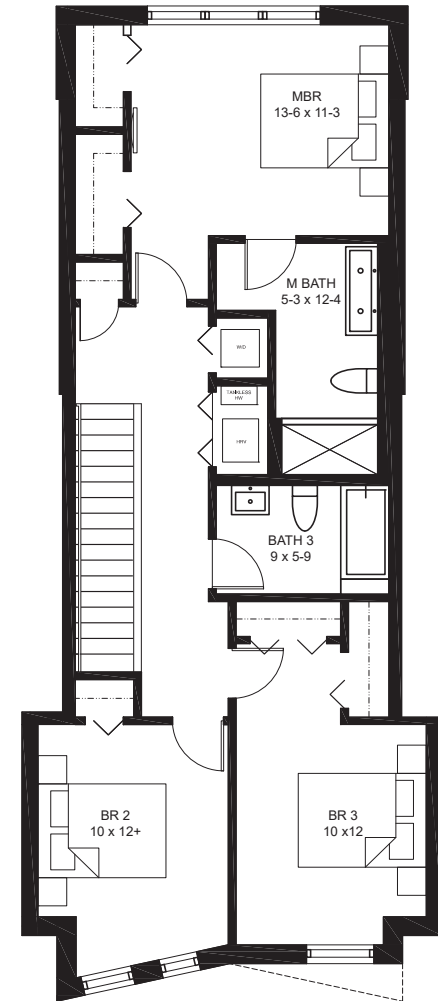
JAMAICA PLAIN

BUILDING #4- 139A
139 HYDE PARK AVENUE
UNIT A - DUPLEX 1ST/2ND FLOORS
1628 SQ FT +/-

3 BEDROOMS, 2.5 BATHS
1 PARKING SPACE
1 STORAGE SPACE
DECK

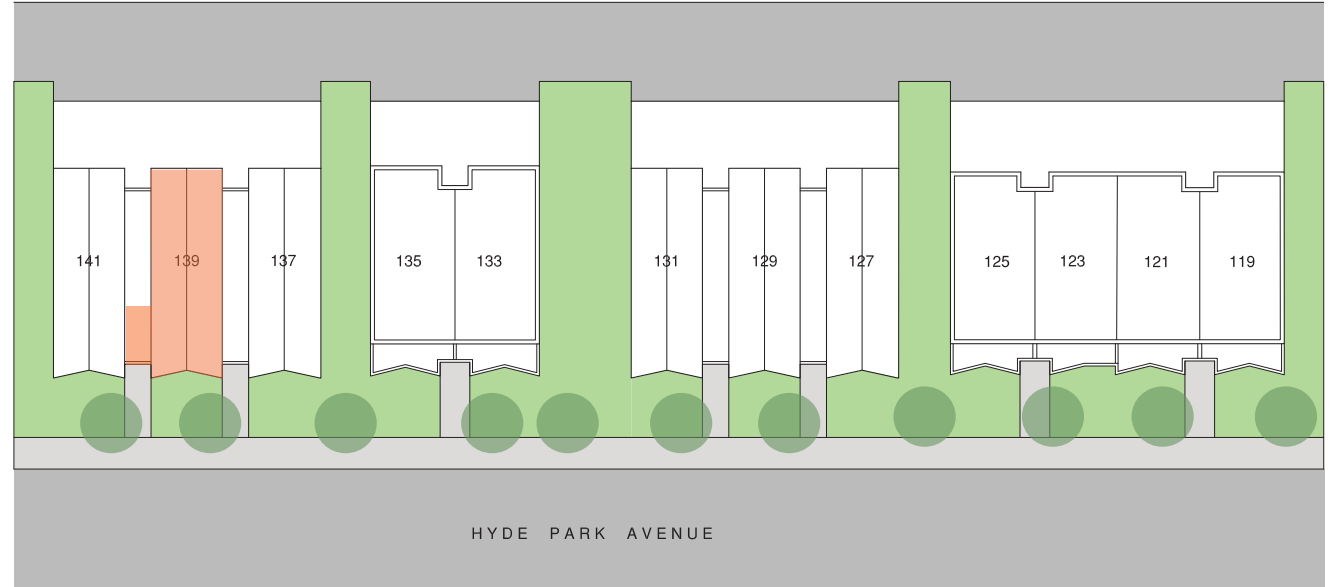


FIRST FLOOR PLAN



SECOND FLOOR PLAN



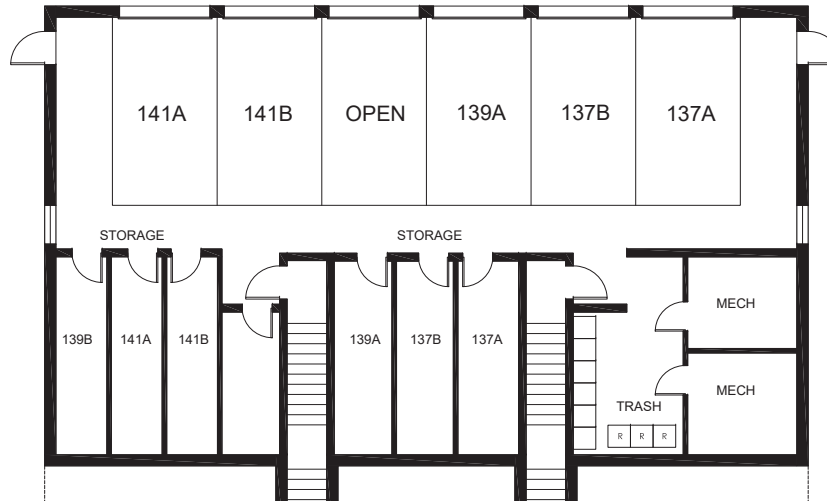


exclusively marketed by:



www.tiliajp.com

T: (617) 221 - 5809



BUILDING 4- BASEMENT FLOOR PLAN

