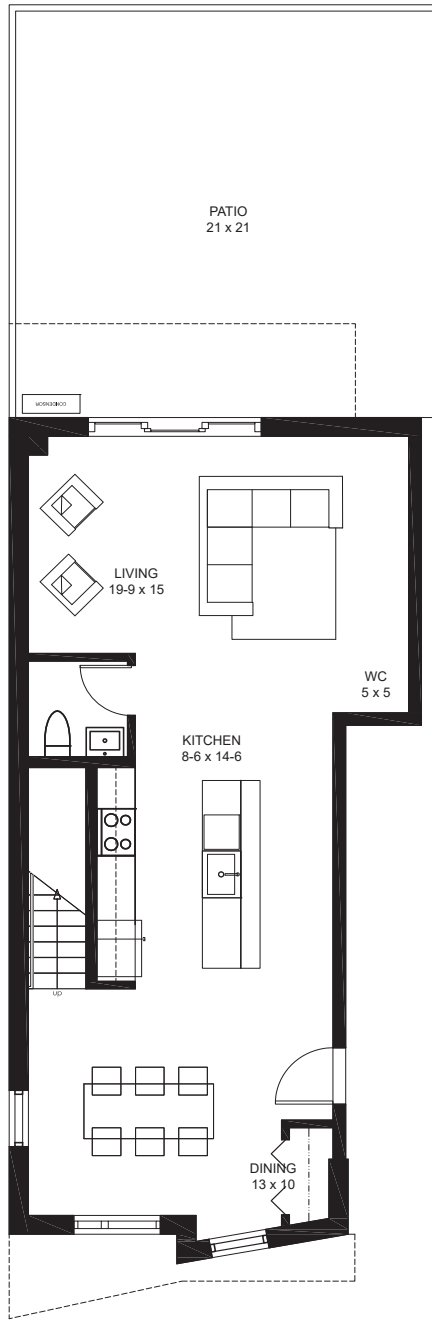


# tilia

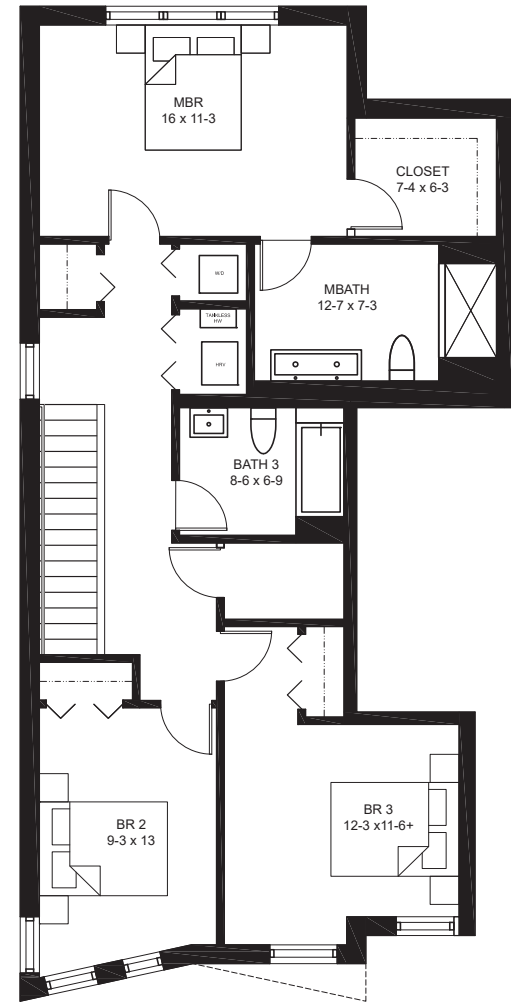
JAMAICA PLAIN

**BUILDING #4- 141A**  
**141 HYDE PARK AVENUE**  
**UNIT A - DUPLEX 1ST/2ND FLOORS**  
**1848 SQ FT +/-**

3 BEDROOMS, 2.5 BATHS  
 1 PARKING SPACE  
 1 STORAGE SPACE  
 DECK

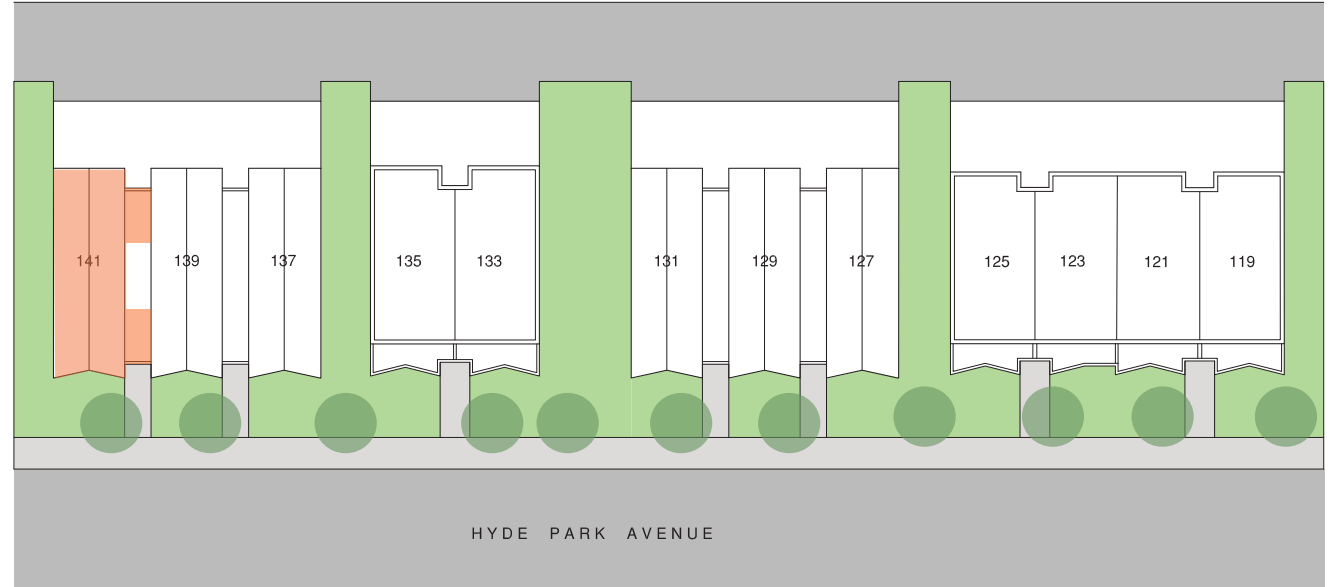


FIRST FLOOR PLAN



SECOND FLOOR PLAN



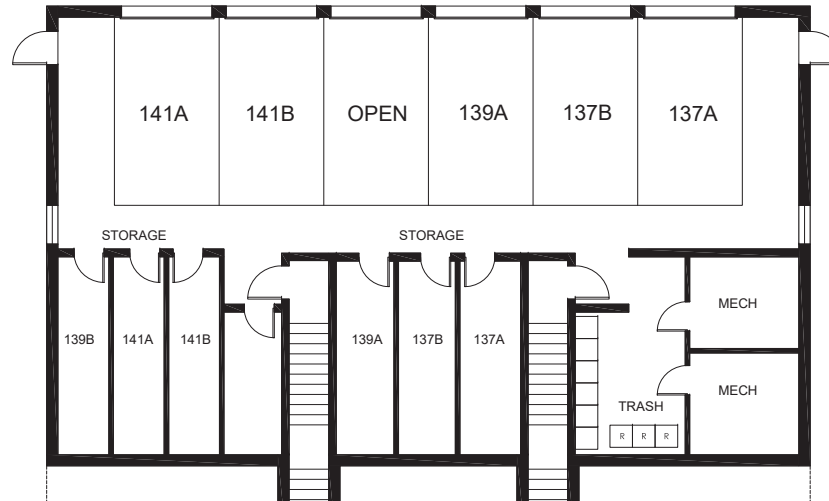


exclusively marketed by:



[www.tiliajp.com](http://www.tiliajp.com)

T: (617) 221 - 5809



BUILDING 4- BASEMENT FLOOR PLAN

