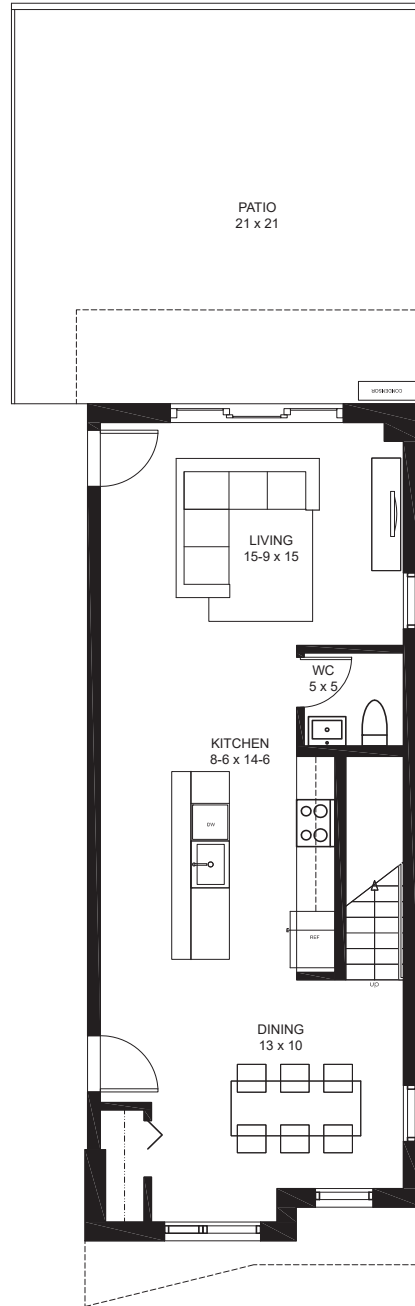
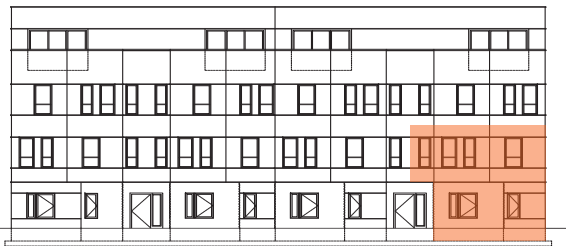


# tilia

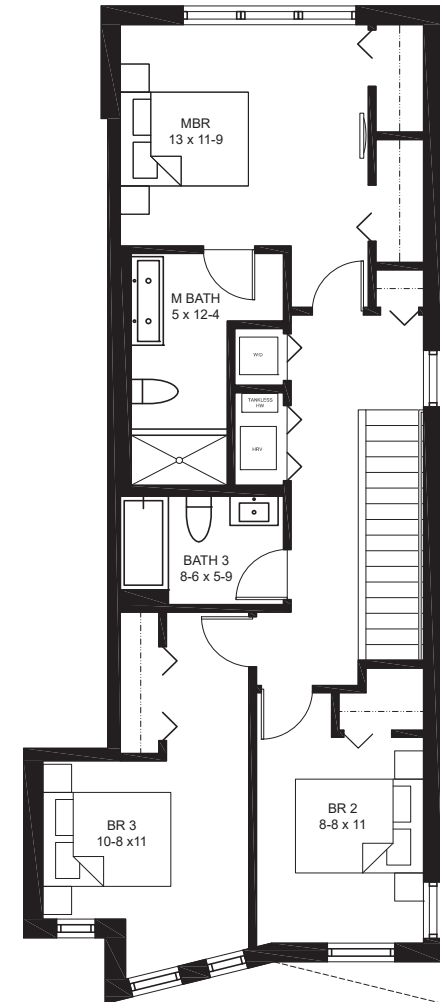
JAMAICA PLAIN

**BUILDING #1- 119A**  
**119 HYDE PARK AVENUE**  
**UNIT A - DUPLEX 1ST/2ND FLOORS**  
**1637 SQ FT +/-**

3 BEDROOMS, 2.5 BATHS  
1 PARKING SPACE  
1 STORAGE SPACE  
DECK-457SF



FIRST FLOOR PLAN

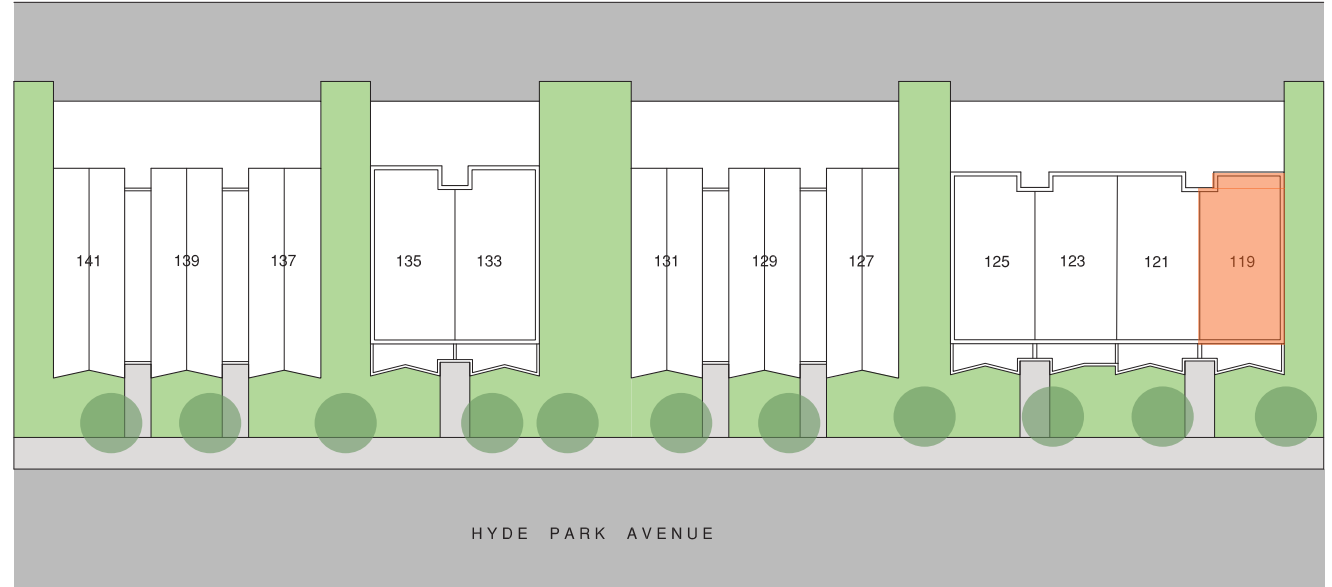


SECOND FLOOR PLAN



All dimensions, specifications, features, amenities and prices are subject to modification without notice.



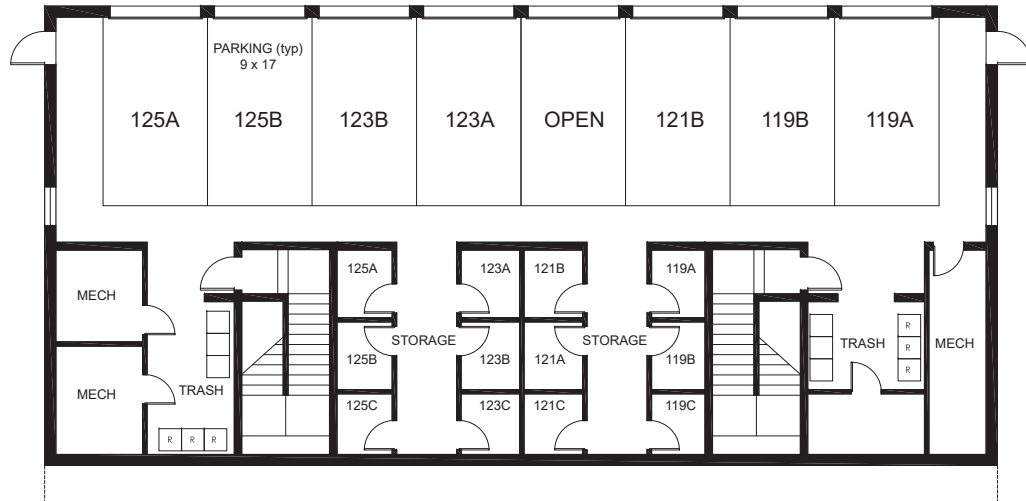


exclusively marketed by:



[www.tiliajp.com](http://www.tiliajp.com)

T: (617) 221 - 5809



BUILDING 1- BASEMENT FLOOR PLAN

