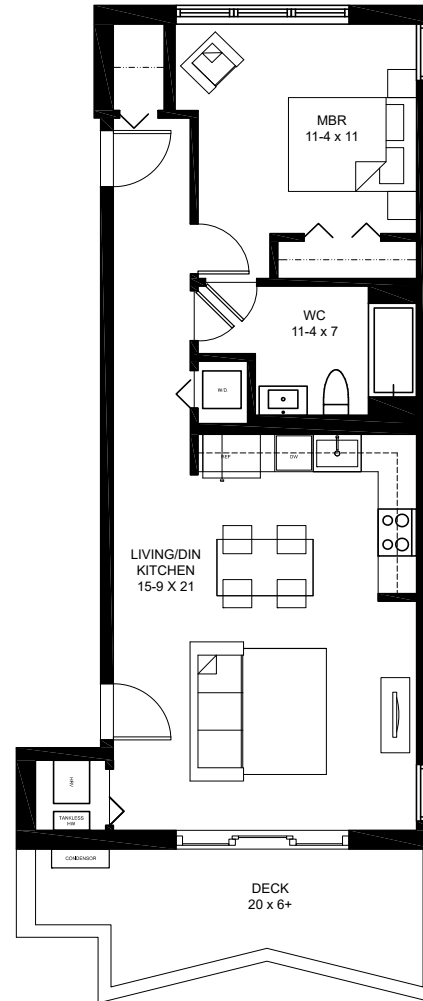
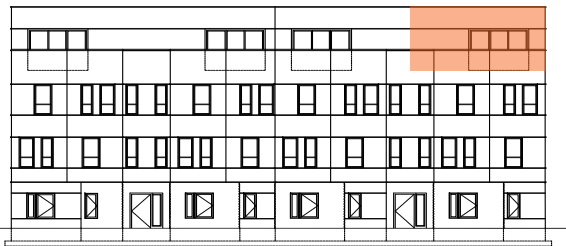


tilia

JAMAICA PLAIN

BUILDING #1- 119C
119 HYDE PARK AVENUE
UNIT C - 4TH FLOOR
791 SQ FT +/-

1 BEDROOMS, 1 BATH
1 STORAGE SPACE
DECK



FOURTH FLOOR PLAN



All dimensions, specifications, features, amenities and prices are subject to modification without notice.

