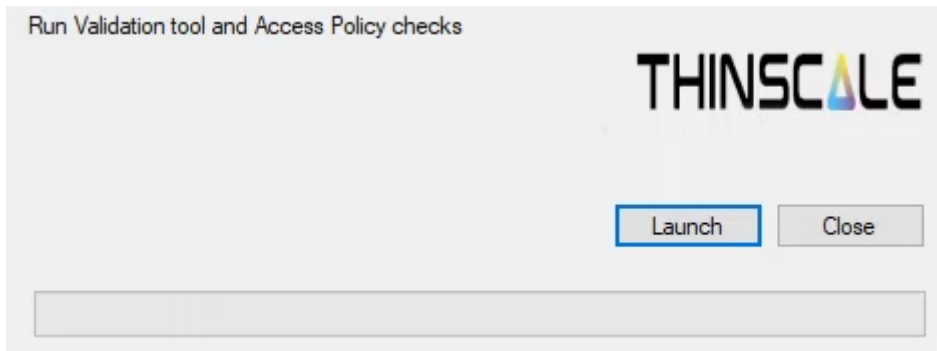




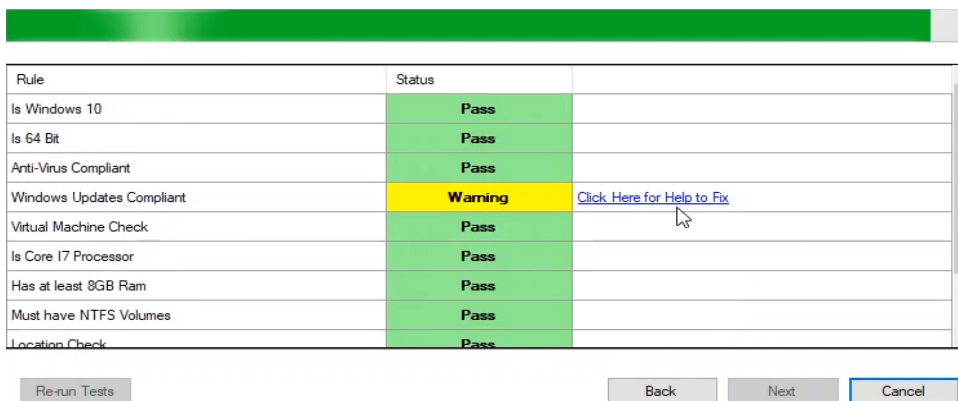
## Step 1: Device Validation

You will receive a link from Teleperformance from a “my.thinscale” URL

To begin your onboarding, please click on this link. This will launch an executable that will perform some security and compatibility tests on your computer.



The Validation Tool will run checks specified by Teleperformance's security policy on your computer.



Rule	Status	
Is Windows 10	Pass	
Is 64 Bit	Pass	
Anti-Virus Compliant	Pass	
Windows Updates Compliant	Warning	<a href="#">Click Here for Help to Fix</a>
Virtual Machine Check	Pass	
Is Core i7 Processor	Pass	
Has at least 8GB Ram	Pass	
Must have NTFS Volumes	Pass	
Location Check	Pass	

Buttons: Re-run Tests, Back, Next, Cancel

*\*Any failure or warning states will be accompanied with links explaining how to resolve the issue.\**

This test can be re-ran as many times as needed. It is recommended that instructions provided by Teleperformance are followed exactly to ensure your computer passes subsequent validations. Please refer to our Technical FAQ page if you run into consistent issues.

Teleperformance will automatically receive the result of your completed scan, you will also be able to copy the report and send it manually to the IT team if needed.

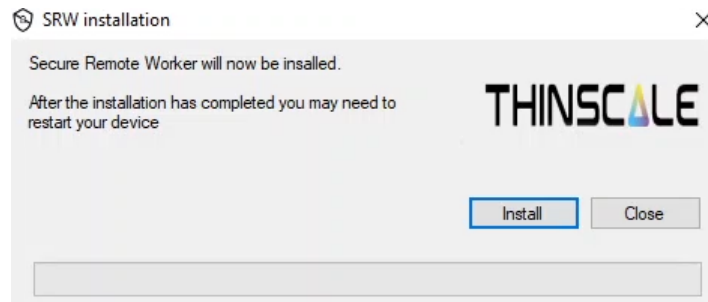
## Step 2: Secure Remote Worker Installation

Upon a successful scan, Teleperformance will send you a new link which will let you download and install your Secure Remote Worker workspace.

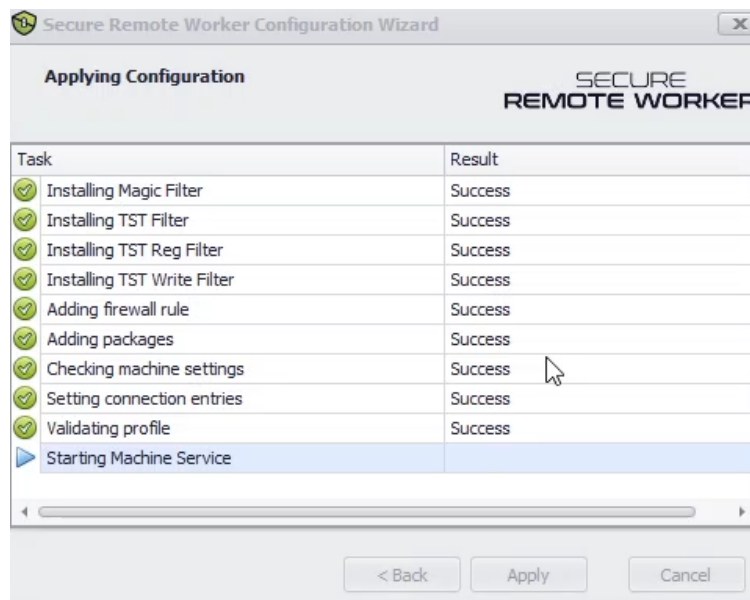


# THINSCALE Secure Remote Worker Installation

Upon clicking the link, Secure Remote Worker will launch it's installer.

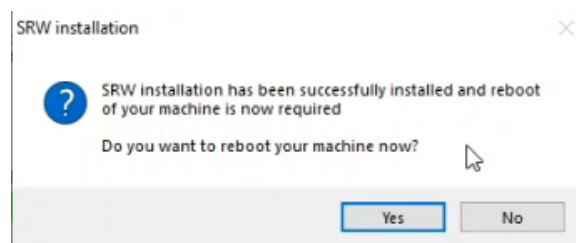


Allow Secure Remote Worker to run it's configuration as below:



*\*All tasks should be successful - if there are any issues please consult our technical FAQ or contact Teleperformance\**

Upon successful installation you will be prompted to restart your computer - please do so before attempting to launch Secure Remote Worker.



### Step 3: Launch Secure Remote Worker

After your computer restarts - simply click the Secure Remote Worker desktop icon that was added during installation.

