

TRUSTED WORLDWIDE SINCE 1908

Darley®

DRONES

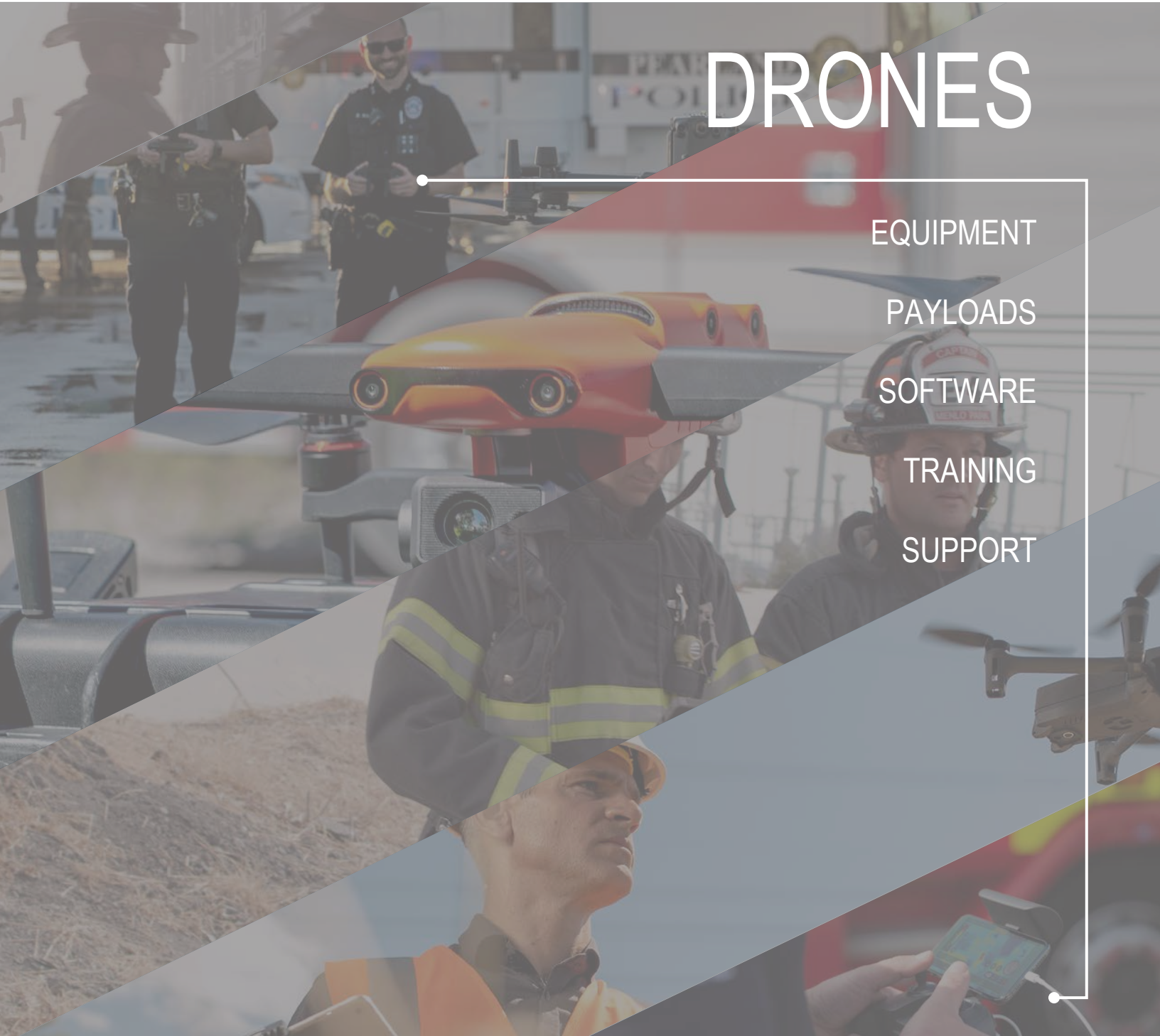
EQUIPMENT

PAYLOADS

SOFTWARE

TRAINING

SUPPORT



DARLEY

SINCE 1908, W.S DARLEY & COMPANY HAS BEEN DEVOTED TO SERVING THE WORLD'S FIRST RESPONDERS AND WARFIGHTERS. WE ARE DEDICATED TO EXCELLENCE AND OFFER A DIVERSE LINE OF QUALITY EQUIPMENT, PUMPS, AND APPARATUS THROUGH PROGRESSIVE DESIGN, MANUFACTURING, AND WORLDWIDE DISTRIBUTION. THROUGHOUT THE YEARS WE HAVE MAINTAINED A ROCK-SOLID REPUTATION FOR BUILDING QUALITY PRODUCTS AND CREATING POSITIVE RELATIONSHIPS WITHIN THE INDUSTRIES THAT WE SERVE.



MISSION STATEMENT

TO PASSIONATELY SERVE THE WORLD'S FIRST RESPONDER AND TACTICAL COMMUNITIES BY PROVIDING HIGH QUALITY, SAFE, AND INNOVATIVE PRODUCTS WITH UNMATCHED COMMITMENT AND SERVICE.

OUR TEAM

AT DARLEY, CUSTOMER SATISFACTION IS OUR TOP PRIORITY. OUR TEAM OF UAV EXPERTS WILL HELP YOUR DEPARTMENT BUILD A CUSTOM DRONE PROGRAM BASED ON YOUR INDIVIDUAL NEEDS BY PROVIDING TOP OF THE LINE AIRCRAFTS, TRAINING, AND CONSULTING.

PARTNERS

TO PROVIDE OUR CUSTOMERS WITH THE BEST POSSIBLE SERVICE, WE ARE CONTINUALLY LOOKING FOR NEW PARTNERS AND TECHNOLOGIES. TO LEARN MORE ABOUT PARTNERSHIP OPPORTUNITIES CONTACT MIKEMOCERINO@DARLEY.COM.



Darley[®]

W.S. DARLEY & CO.
WWW.DARLEY.COM/ROBOTICS
1.800.4.DARLEY • 630.735.3500
@WSDARLEY   

CORPORATE HQ
325 SPRING LAKE DRIVE
ITASCA, IL 60143-2072
#DEMANDDARLEY

AIRCRAFTS FOR FIRST RESPONDERS

DARLEY OFFERS A FULL RANGE OF DRONES TO MEET ANY BUDGET

DJI MATRICE 300 RTK SERIES

The M300 sets a new standard for the Public Safety Drone Industry. Offering up to 55 minutes of flight time, advanced AI capabilities, 6 Directional Sensing & Positioning, and more, the M300 RTK sets a whole new standard by combining intelligence with high-performance and unrivaled reliability.



dji

PARROT ANAFI USA

Advanced flight features designed to meet the unique needs of government agencies, it is compatible with industry-leading solution providers, available sdk for an ever-growing ecosystem. Same high-end security, durability and imaging capabilities as Parrot's Short-Range Reconnaissance (SRR) drone designed for the U.S. Army.



Parrot

DJI MAVIC 2 ENTERPRISE

The modular design of the Mavic 2 Enterprise makes it a perfect choice for your department. With a powerful and portable thermal imaging camera your drone can go everywhere you go. Added data security features, ADS-B receiver, and obstacle avoidance give you more peace of mind while flying.



dji

AUTEL ROBOTICS EVO II SERIES

The only 8K folding drone on the planet. Capture content at resolutions up to a massive 8000x6000. EVO II comes standard with a 7100mAh rechargeable battery and uses our patented Battlock system to guard against battery ejection in high-speed maneuvers or hard landings. Control your drone up to 9km away, keeping you connected in crowded urban environments and thick forests.



AUTEL
ROBOTICS

DJI MATRICE 300 RTK SERIES

INTELLIGENCE WITH HIGH-PERFORMANCE

The M300 sets a new standard for the Public Safety Drone Industry. Offering up to 55 minutes of flight time, advanced AI capabilities, 6 Directional Sensing & Positioning, and more, the M300 RTK sets a whole new standard by combining intelligence with high-performance and unrivaled reliability. The Matrice 300 is IP45 rated and can operate in temperatures from -4 degrees - 122 degrees Fahrenheit. The new M300 also has a new health management system to give agencies peace of mind that their aircraft is in tip-top shape.



BUILT TOUGH. WORKS SMART.

IMPROVED TRANSMISSION SYSTEM

The all-new OcuSync Enterprise enables transmission up to 9 miles away and supports triple-channel 1080p video. Real-time auto-switching between 2.4 GHz and 5.8 GHz enables more reliable flight near high-interference environments, while AES-256 encryption offers secure data transmission.

MULTIPLE PAYLOAD CONFIGURATIONS

Configure your M300 RTK to fit your mission needs. Mount up to 3 payloads simultaneously, with a maximum payload capacity of 2.7 kg. In addition to the new H20 and H20T, the DJI Z30 and XT2 are both compatible with the M300.

A POWERFUL VISION SYSTEM YOU CAN RELY ON

To enhance in-flight safety and aircraft stability, dual-vision and TOF sensors appear on all six sides of the aircraft, offering a maximum detection range of up to 40m, with options to customize the aircraft's sensing behavior via the DJI Pilot App. Even in complex operating environments, this 6 Directional Sensing and Positioning system helps keep the aircraft and the mission safe.



ENHANCED FLIGHT PERFORMANCE

The refined airframe and propulsion system design gives you a more efficient and stable flight, even in harsh conditions.

FEATURES

- Max Flight Time: 55 mins.
- Max Descend Speed*: 7 m/s
- Service Ceiling**: 7000 m
- Wind Resistance: 15 m/s
- Max Speed: 23 m/s

* Achieved in Forward Flight using S Mode.

** The service ceiling of 7000 m is achievable with high altitude propellers.

DIMENSIONS

- Folded + Propellers: 16.9"L x 16.5"W x 16.9"H
- Unfolded - Propellers: 31.9"L x 26.4"W x 16.9"H

WEIGHT

- Approximately 13.9 lb. (with two TB60 batteries)

CONTROLLER

- New DJI Smart Controller for Matrice 300

OPTIONAL ACCESSORIES

- Dual Gimbal connector
- Single upward Gimbal connector
- High altitude low noise propellers
- D-RTK High Precision GNSS Mobile Station

COMPATIBLE PAYLOADS

- Zenmuse H20
- Zenmuse H20T
- Zenmuse XT2
- Zenmuse Z30
- Zenmuse X-Port
- Wingsland Z15 Spotlight



SMART CONTROLLER



DJI M300 PAYLOADS

DETERMINE WHICH PAYLOAD WILL WORK BEST FOR YOU

ZENMUSE H20 & ZENMUSE H20T

The new Zenmuse H20 series from DJI is a state-of-the-art multi-sensor payload. The unique intelligence and integrated design provide unprecedented aerial imaging capabilities. Capture everything up close or from a distance, in true living color or thermal. An integrated laser rangefinder (LRF) measures the distance to an object at up to 1200m away.

SPECIFICATIONS

20 MP Zoom Camera	Zoom: 23x Hybrid Optical Zoom, 200x Max Zoom Sensor: 20 MP 1/1.7" CMOS Video Resolution: 4K/30fps
12 MP Wide Camera	Equivalent Focal Length: 24mm, DFOV: 82.9° 12 MP 1/2.3" CMOS Sensor
1200 m Laser Rangefinder	Range: 3 m - 1200 m Accuracy: $\pm (0.2 \text{ m} + \text{D} \times 0.15\%)$

THERMAL CAMERA - H20T ONLY

Thermal Camera	640x512 px Radiometric
DFOV	40.6°
Resolution	640x512
Frame Rate	30fps
Thermal Sensitivity	$\leq 50\text{mk}@f1.0$ (NEDT)

FEATURES

- Up to 128 GB MicroSD card
- One-click capture of all three cameras simultaneously
- Point-to-aim focus
- High-res grid photo
- Night scene supported zoom camera
- GPS, date, and time stamps

COMPATABILITY

MATRICE 300 RTK



ZENMUSE Z30

The Zenmuse Z30 is a powerful integrated aerial camera with up to 30x optical and 6x digital zoom for a total magnification of 180x. The Z30 provides exceptional detail of any structure, subject, or vehicle from long distances.

SPECIFICATIONS

Sensor	CMOS, 1/2.8" Effective Pixels: 2.13 M
Lens	30x Optical Zoom F1.6 (Wide) - F4.7 (Tele)
Zoom Movement Speed	Optical Wide – Optical Tele: 4.6 sec Optical Wide – Digital Tele: 6.4 sec Digital Wide – Digital Tele: 1.8 sec

COMPATABILITY

MATRICE 100, MATRICE 600, MATRICE 200 SERIES, MATRICE 300RTK





ZENMUSE XT2

The Zenmuse XT2 incorporates FLIR's industry leading thermal technology with 4K high definition, creating an advanced aerial camera. The XT2 quickly transforms aerial data into powerful insights that save time, money – and lives.

SPECIFICATIONS

Dimensions	With 25 mm Lens: 123.7×112.6×127.1 mm With Other Lens: 118.02×111.6×125.5 mm
Weight	With 25 mm Lens: 629g With Other Lens: 588g
Sensor	CMOS, 1/2.8" Effective Pixels: 2.13 M
Video Resolutions	4K Ultra HD: 3840×2160 29.97p FHD: 1920×1080 29.97p

THERMAL CAMERA

Thermal Imager	Uncooled VOx Microbolometer
Video Display Formats	640×512 336×256
Digital Zoom	640×512: 1x, 2x, 4x, 8x 336×256: 1x, 2x, 4x
Pixel Pitch	17 μm
Full Frame Rates	30 Hz

COMPATABILITY

MATRICE 100, MATRICE 600, MATRICE 200 SERIES, INSPIRE 1, MATRICE 300RTK



WINGSLAND Z15 SPOTLIGHT

The Wingsland Z15 is a bright, 10200 lumens, 3-axis stabilized gimbal spotlight. It has an operating range of up to 150 m lighting the space at night or in lowlight conditions.

FEATURES

Three Light Modes	Always On, Flashing, SOS
-------------------	--------------------------

COMPATABILITY

MATRICE 200 SERIES, MATRICE 300 RTK



PARROT ANAFI USA

A DRONE DESIGNED FOR GOVERNMENT AGENCIES

32X ZOOM, THERMAL IMAGING, A RUGGEDIZED AIRFRAME, AND ADVANCED DATA SECURITY

Advanced flight features designed to meet the unique needs of government agencies, it is compatible with industry-leading solution providers, available sdk for an ever-growing ecosystem. Same high-end security, durability and imaging capabilities as Parrot's Short-Range Reconnaissance (SRR) drone designed for the U.S. Army.



EASY-TO-OPERATE

- Drone unfolds, powers on and connects securely to its controller in less than 55 seconds
- No GPS Synchronization Required to Take Off: flies perfectly indoor and in obstructed areas

PACK CONTENTS

- 1 - ANAFI USA
- 3 - <2+1> smart batteries
- 1 - Skycontroller USA GOV
- 1 - Multi-sport fast USB charger
- 1 - Additional set of propeller blades
- 4 - USB-A/USB-C cables
- 1 - Hard case





FEATURES

- FLIR BOSON Thermal Camera: 320x256 resolution
- Powered by a new version of FreeFlight 6, ANAFI's acclaimed piloting software
- Transmission range on 2.5 mi.
- Fly by Coordinates in Assisted Framing or Full Autonomous Flights: Define points of interest (POI), waypoints (WP) and landing points with their satellite navigation coordinates (GPS, GLONASS, GALILEO)
- Create a flight plan with pre-set automatic flight and target-tracking
- Editable "Return to Home" (RTH) feature
- Quietest Drone in its Class: Sound level of just 79 dB when it is at 50 cm off the ground
- Standard USB-C charging
- Flight Time: 32 minutes - best in class for a drone of its size

WEIGHT

- 1.1 lb. (500 g)

GOVERNMENT EDITION FEATURES

- ANAFI USA GOV and Skycontroller USA GOV are fully TAA and NDAA compliant
- Fly with a data-empty drone for complete operational secrecy
- Worldwide US-standard Wi-Fi bandwidth
- Disable the auto-RTH function to maximize airtime and range
- Import KML and TMS map tiles for up-to-date and optimal situational awareness
- Control drone lights for stealth missions



32X ZOOM AND FLIR THERMAL IMAGING



PELICAN HARDCASE



AUTEL ROBOTICS EVO II SERIES

MOST CAPABLE FOLDING DRONE ON THE PLANET

The only 8K folding drone on the planet. Capture content at resolutions up to a massive 8000x6000. EVO II comes standard with a 7100mAh rechargeable battery and uses our patented Battlock system to guard against battery ejection in high-speed maneuvers or hard landings. Control your drone up to 9km away, keeping you connected in crowded urban environments and thick forests.



FEATURES

- 12 optical sensors and 2 sonar sensors creating 360° protection
- Detect hazards up to 30m away and control the speed to avoid collision
- Pro Model has a 1" sensor with 6K
- Dual model has thermal resolution of up to 640x512 by FLIR and an 8K sensor
- Interchangeable cameras
- Real-time video through Autel Live Deck



DUAL THERMAL CAMERA



8K CAMERA



6K CAMERA



REMOTE CONTROLLER

Included with EVO II is a smart controller featuring a built-in 3.3-inch OLED display. Change camera settings, adjust drone parameters, and view the live feed right from the remote, eliminating the need for a mobile device. With a four-hour battery life and an ergonomic, compact design, pilots can easily pack and fly on the go.

- 5.6 mile transmission range with or without a mobile device
- Built-in 3.3-inch OLED display
- 720p HD FPV live video feed display
- Compact folding hand grips



AIRCRAFT SPECS

- Takeoff Weight: 1127g-1192g
- Wheelbase: 397mm
- Max Speed: Standard: 15m/s // Ludicrous: 20m/s
- Max Service Ceiling: 7000m
- Max Flight Time: Hover: 35min // Moving: 40min
- Transmission Type: FCC: 2.4GHz ALink
- Max Transmission Distance: 9km
- Storage: Internal: 8GB Max SD: 128GB
- Battery Type: LiPo 3s
- Battery Size: 7100mAh
- Controller Screen: 3.3in OLED 330 Nits
- Controller Battery: 5000mAh

INCLUDES

- Batteries
- Spare propellers
- Remote controller
- Hard case
- Charging cables
- USB cables
- Wall charger
- 32GB U3 SD card

AUTEL
ROBOTICS



DJI MAVIC 2 ENTERPRISE

DUAL AND ZOOM MODELS



The modular design of the Mavic 2 Enterprise makes it a perfect choice for your department. With a powerful and portable thermal imaging camera, your drone can go everywhere you go. Added data security features, ADS-B receiver, and obstacle avoidance give you more peace of mind while flying.

DJI MAVIC 2 ENTERPRISE DUAL

VISIBLE AND THERMAL IMAGERY

- Integrated Radiometric FLIR Thermal Sensor
- Adjustable Parameters for Emissivity & Reflective Surfaces
- Multiple Display Modes: FLIR MSX®, Infrared & Visible

DJI MAVIC 2 ENTERPRISE ZOOM

POWERFUL ZOOM CAPABILITY

- 12 MP 1/2.3" CMOS Sensor
- Dynamic Zoom: 2x Optical, 3x Digital Zoom Capability
- Post Analysis Metadata: GPS Timestamping

FEATURES

- Max Flight Time: 31 mins.
- Standard zoom camera for both zoom and dual
- Thermal camera included with dual
- Standard spotlight, beacon and speaker
- Standard obstacle avoidance system
- Operating Temperature: 14° - 104°F
- Hot Swop speaker, beacon, and spotlight options
- 24 GB internal storage
- 2x digital 2x optical zoom

DIMENSIONS

- Folded: 8.4" x 3.6" x 3.3"
- Unfolded: 12.7" x 9.5" x 3.3"
- Unfolded + Spotlight: 12.7" x 9.5" x 4.4"
- Unfolded + Beacon: 12.7" x 9.5" x 4"
- Unfolded + Speaker: 12.7" x 9.5" x 5.5"

WEIGHT

- 2 lbs. (without accessories)

THERMAL CAMERA SPECS

- Sensor: Uncooled VOx Microbolometer
- Lens: HFOV: 57°
- Aperture: f/1.1
- Resolution: 160x120
- Pixel Pitch: 12 µm
- Spectral Band: 8-14 µm
- Image Size: 640x480 (4:3), 640x360 (16:9)
- Still Photography Modes: Single shot, burst shooting (3/5/7 frames)
- Video Recording Modes: 640x360 @ 8.7fps



FOLDABLE. COMPACT. PORTABLE.



DRONE ACCESSORIES

CUSTOMIZE YOUR FLEET WITH ACCESSORIES AND SOFTWARE SOLUTIONS

GO PROFESSIONAL CASES

Each GPC product is designed with the individuality of the customer in mind, offering unique cases to fit any and all organizational and protective needs. They offer the best in quality and innovation by utilizing the most advanced production technologies and experts to ensure your case is at the top of its class.

- Precision waterjet inserts
- Signature closed, soft cell polyethylene foam with blue MDL cap
- Watertight hard case with automatic ambient pressure equalization valve
- UV ray, corrosion and fungus resistant



RS1000 GROUND POWER SYSTEM

Blue Vigil manufactures affordable tether power systems designed for off-the-shelf drones. The ground-based tether allows unlimited flight time when connected to a power source (generator, household current, or battery.)

- Made and serviced in America
- Unlimited flight duration



COLORADO DRONE CHARGERS

Charges up to 4 batteries and 1 flight controller simultaneously in record time! Fly all day with the Portable Rapid Charging System (PRCS). Designed to work with generators, inverters, and other power sources. Features CDC intelligent charging with current, voltage and temperature management.

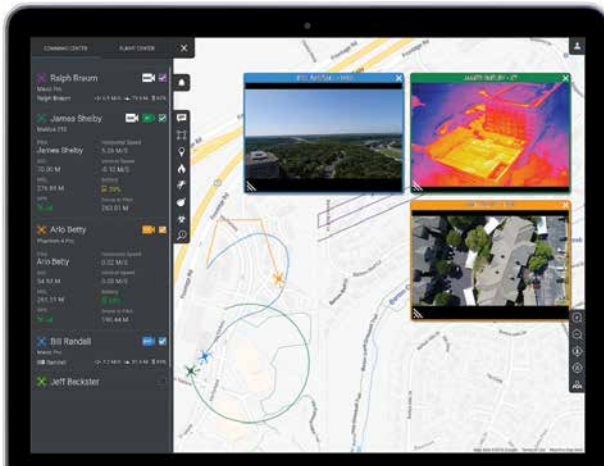
- 2-year warranty
- Made in USA



END-TO-END SOLUTIONS

CUSTOMIZE YOUR AGENCY'S ROBOTICS PROGRAM

There is more to a successful drone program than just purchasing equipment. Our experienced team will help guide your agency through the different regulatory requirements, training, equipment selection, and policy review.



SCENE RECONSTRUCTION



CUSTOM TRAINING CLASSES

TRAINING

We understand that utilizing new technology can be daunting. Thankfully, our network of trainers have been working with public safety to develop the most practical training methods. Training can be customized and includes, but is not limited to the following:

- Part 107 course
- Basic public safety training
- Advanced public safety training
- **Specialty Training:** Scene reconstruction, 5-day integration into law enforcement, UAS in crisis negotiations, UAS in search & rescue
- Additional customer requests

REGULATIONS AND FAA REQUIREMENTS

Want to learn how your department can obtain a Certificate of Authorization from the FAA? Darley is pleased to recommend Skyfire Consulting to help with your department's legal services. These services include, but are not limited to:

- Certificate of Authorization (COA) Processing - Blanket & Jurisdictional
- Certificate of Authorization (COA) Renewals
- Safety case preparation
- Waiver processing
- One-on-one consulting

SUPPORT AND OPERATING PROCEDURES

Having a network of departments using and learning these new technologies helps create the framework needed to start your own Standard Operating Procedures without the need to reinvent the wheel. We will assist with outlining your SOPs and continue to support your program beyond just equipment selection.

SOFTWARE SOLUTIONS

Darley works with a variety of software companies to provide our customers with everything they need to launch, execute, and maintain their drone program. Provide meaningful data and safety to your program with live streaming, fleet management, team management, data management, flight planning, remote operation, flight logging, and more. Contact your Darley rep to learn more about solutions available for your aircrafts.



DRONESENSE

BUILD, MANAGE AND SCALE YOUR DRONE PROGRAM

DroneSense is a comprehensive solution that empowers your public safety organization to build, manage, and scale its drone program. DroneSense has partnered with first responders from day one to design a mission-critical software platform that enables agencies to leverage the full capabilities of drones in their operations. Whether you have already obtained a drone, or are contemplating how to get your program started, DroneSense can help you quickly become fully-operational for all stakeholders across your organization.

PILOTS

Provide pilots with a standardized flight control interface for all types of drones in your fleet while simultaneously enabling automatic flight logging and remote live streaming.

- View elevations in AGL, MSL and Height Above Terrain (HAT)
- Consume, view, and record multiple types of video, including thermal
- Adjust radio settings to improve performance in challenging RF environments



OPERATIONS

Give incident command complete situational awareness with secure access to live video and telemetry data from pilots on-scene as well as advanced GIS tools from your connected desktop or mobile device.

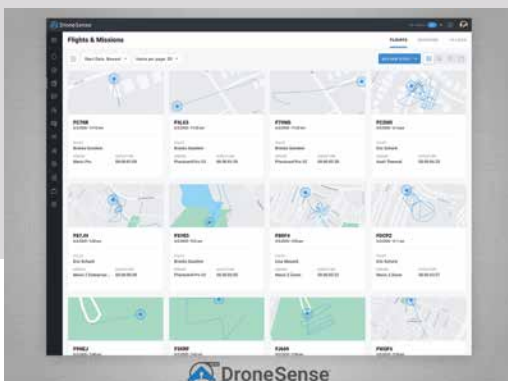
- Visualize all drone locations and secure live video feeds in real time to maximize scene intelligence
- Utilize advanced map features like Esri base layers, overlays, and measuring tools
- Coordinate missions with other agencies from within Operations Hub by issuing external collaborators a simple six-digit code



ADMINS

DroneSense is a full system of record for your entire drone program that provides accountability and transparency across your organization. Organize your people, hardware, flight activity, and more in a powerful and intuitive interface.

- View detailed, automatically recorded flight logs
- Monitor pilot flight activity and total flight hours
- Ensure asset readiness with comprehensive hardware management, including aircraft, batteries, and tablets



SKYEBROWSE: 3D MAPPING

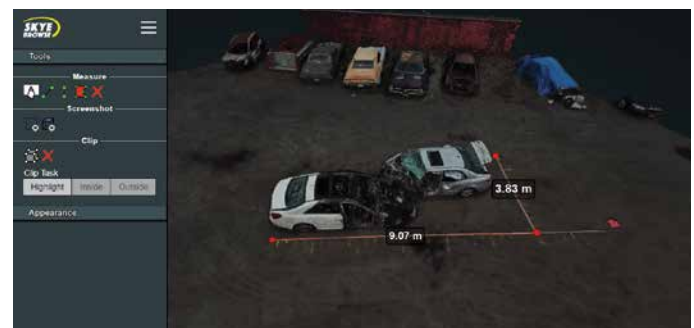
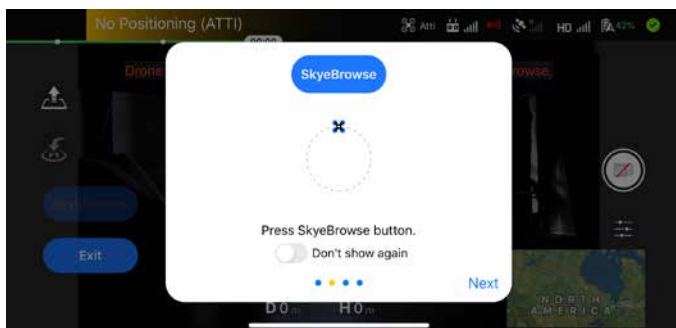
3D MODELING IN MINUTES



SkyeBrowse enables people to make 3D models in just a few minutes. People can make the models using their smartphones with only a couple of taps. SkyeBrowse is very simple with no extensive flying experience required.

FEATURES

- Videogrammetry 3D Modeling
- CSI Effect & Night Ops AI
- 1cm accuracy
- Hyper-realistic 3D models for higher altitude flights
- Ability to download 3D model and 2D map
- Share button
- CJIS Compliant
- Point clouds exported in open source GIS format
- Ability to take multiple flights without a break
- Easily upload videos from your laptop through the SD card after your flights
- Back-end connections use SSL to maintain security
- Military-grade encryption
- Easy-to-use interface where you can annotate your models
- SkyeBrowse is suitable for car crashes, crime scenes, controlled burns, natural disasters, SWAT, SAR, structure fires, and Night Operations.



FOXFURY LIGHTING SOLUTIONS

COMPREHENSIVE SOLUTIONS FOR A VARIETY OF APPLICATIONS



D3060

A small format utility light with forward-focused lighting, right angle flood lighting, and strobe light. It can mount to drones or straps and rotate 360° for omni-directional light. The D3060 is waterproof and rechargeable.

- Two lights in one
- 30° front light, 60° dorsal light
- 360° swivel light
- 5700K white balanced LEDs
- Rechargeable LiPo battery recharges in 1.5 hours
- Waterproof and impact resistant
- Mounts with velcro or customer-supplied strap
- Strobe mode meets federal and international regulations for UAV night flight and anti-collision lighting
- Operating Temperature Range: -4°F (-20°C) to 300°F (149°C)
- 1.3 oz (37 g)



D10 DRONE LIGHT

The FoxFury D10 is a multi-function utility light that is proudly made in the USA. It mounts to most drones and helmets with the Flat Mounting Pad via Dual Loc Velcro or 5915 VHB Tape. The D10 provides anti-collision lighting and navigational lighting and meets global night flight requirements.

- Lumens: 200 Lumens
- Battery Life: 30 - 80 minutes
- Power Source: Rechargeable LiPo Battery System
- Modes: 2 (High, Strobe)
- Weight: .48 oz (13.7 g)
- Waterproof: Yes
- Impact Resistant: 9.8 ft (3 m)
- Operational Beam Distance: Front Light - 20 m = 65 ft
- Beam Angle: 30°



NOMAD - 360, T32 & T56 MODELS

Portable, self-contained scene lights with built-in tripod legs and 360° light heads. Cordless and rechargeable LED lights. Use as a spotlight, flood light, or 360° scene light all in one. Extends up to 8.5 ft tall. Silent and easy to move/ Use indoors, outdoors or submerged underwater.

- Deploys in seconds
- Self-contained, built-in tripod legs
- Converts from 360° scene light, to 120° area light, or to 12° spotlight in seconds
- Rechargeable Li-Ion battery system (recharges in 7 hours)
- 95 CRI 3200K (T32) and 5600K (T56) daylight balanced light
- Waterproof and impact resistant
- Fire Resistant: Meets NFPA 1971-8.6 (2013) requirements
- Battery Life: Low - 24hrs, Medium - 9hrs, High - 3hrs



TEDD - TACTICAL ELECTRONIC DISTRACTION DEVICE

A less than lethal tactical device for high-risk situation de-escalation. Great for use in training, riots, SWAT teams, corrections, and more.

- 2,600 Lumens with 120dB sound
- Rechargeable, lithium-ion battery
- Solid steel base, high temp. poly-carbonate side, and nylon top
- Base is self-righting
- Submersible to 10ft and impact resistant
- Eight programable light and sound modes, four programable activation delays



EMILY BY HYDRONALIX

EMERGENCY INTEGRATED LIFESAVING LANYARD

KEEP RESCUERS OUT OF THE DANGER ZONE

The EMILY platforms are designed as an asset for public safety organizations. EMILY offers scene stability as a REMOTE CONTROL asset in dangerous and hazardous waters by keeping rescuers in a safe area. The EMILY technology complements public safety teams in hazardous water conditions without adding additional staff. Battery powered and remote control operated using line of sight technology, EMILY provides a viable alternative to traditional rescue methods.

EMILY KIT

- 2 additional steering arm boot seals
- Electrical anti-corrosion solution
- 3 additional inlet grates
- Flags 3-pack
- Tool kit
- Lanyard 3-pack
- Canvas carry bag
- Additional impeller

SWIFT WATER RESCUE EMILY

- SWRE float cover
- Life jacket
- Helmet
- Headlight

MAN OVERBOARD EMILY KIT

- MOBE Cover
- 2 additional steering arm boot seals
- Additional inlet grate
- Additional impeller
- Flags 3-pack
- Headlight
- 2000 ft. reel
- Reflective strips
- Navigation lights (Port red light, Starboard green light)



FEATURES:

- Weight: 26 lbs.
- Length: 50 in.
- Positive buoyancy: 150 lbs.
- Self-righting
- Perimeter grab rope: 8 ft.
- Waterproof internal modular components
- D-Ring tow line attachments
- Jet pump drive made of aerospace composites and ceramic bearings

INCLUDED:

- Float cover
- Battery charger 2-pack
- Battery module
- Flag
- Boat stand
- Lanyard 2-pack
- Futaba transmitter
- User manual
- 2.4 GHz transmitter controller with amplifier



SWIFT WATER EMILY



MAN OVERBOARD EMILY KIT



RESCUE REEL



BOUNCE IMAGING TACTICAL 360 CAMERAS

MULTIPLE USERS, ALL DIRECTIONS, SIMULTANEOUSLY

Bounce Imaging cameras bring a new standard to keeping your team safe. Their simple to use tactical cameras are smartphone compatible and require no training. traditional cameras force you to see the world as if through a straw - with a limited field of view. Bounce Imaging cameras see in all directions AT THE SAME TIME. This means one user can look left, another can look right, and if they both miss something behind them, they can scroll back in time and replay video from that perspective while maintaining vertical and horizontal stabilization. Connect via WiFi, or an embedded 4G-LTE connection then stream video to command or other users in the field.

SAFER ROOM CLEARING - AVOID THE FATAL FUNNEL

Throw the camera through a window, toss it into a barricade, or roll it down a hallway. As it goes, the camera records stable 360/VR video so multiple users can be covering and recording all angles simultaneously.

SEARCH CONFINED SPACES INSTANTLY

360-degree views of difficult-to-reach spaces, in a small, easy-to-carry camera that pairs directly to a smartphone app. All at a fraction of the cost and complexity of most search camera systems. It is very difficult to understand the layout of a confined space, especially after an accident has thrown reference points about. Our stabilization means that your 12 o'clock stays constant, even in virtual reality - allowing you to precisely understand the layout of the target environment.

REVOLUTIONARY K9 SITUATIONAL AWARENESS

Sick of a blurry view between your K-9's ears? Our stabilization removes the shaking and movement that makes most cameras unusable while the dog is in motion. Our continuous 360-degree recording means you never miss what the dog isn't focused on - even after the dog has left the room.



TRUSTED WORLDWIDE SINCE 1908



W.S. DARLEY & CO.

WWW.DARLEY.COM/ROBOTICS

1.800.4.DARLEY • 630.735.3500

@WSDARLEY   

CORPORATE HEADQUARTERS

325 SPRING LAKE DR., ITASCA, IL 60143