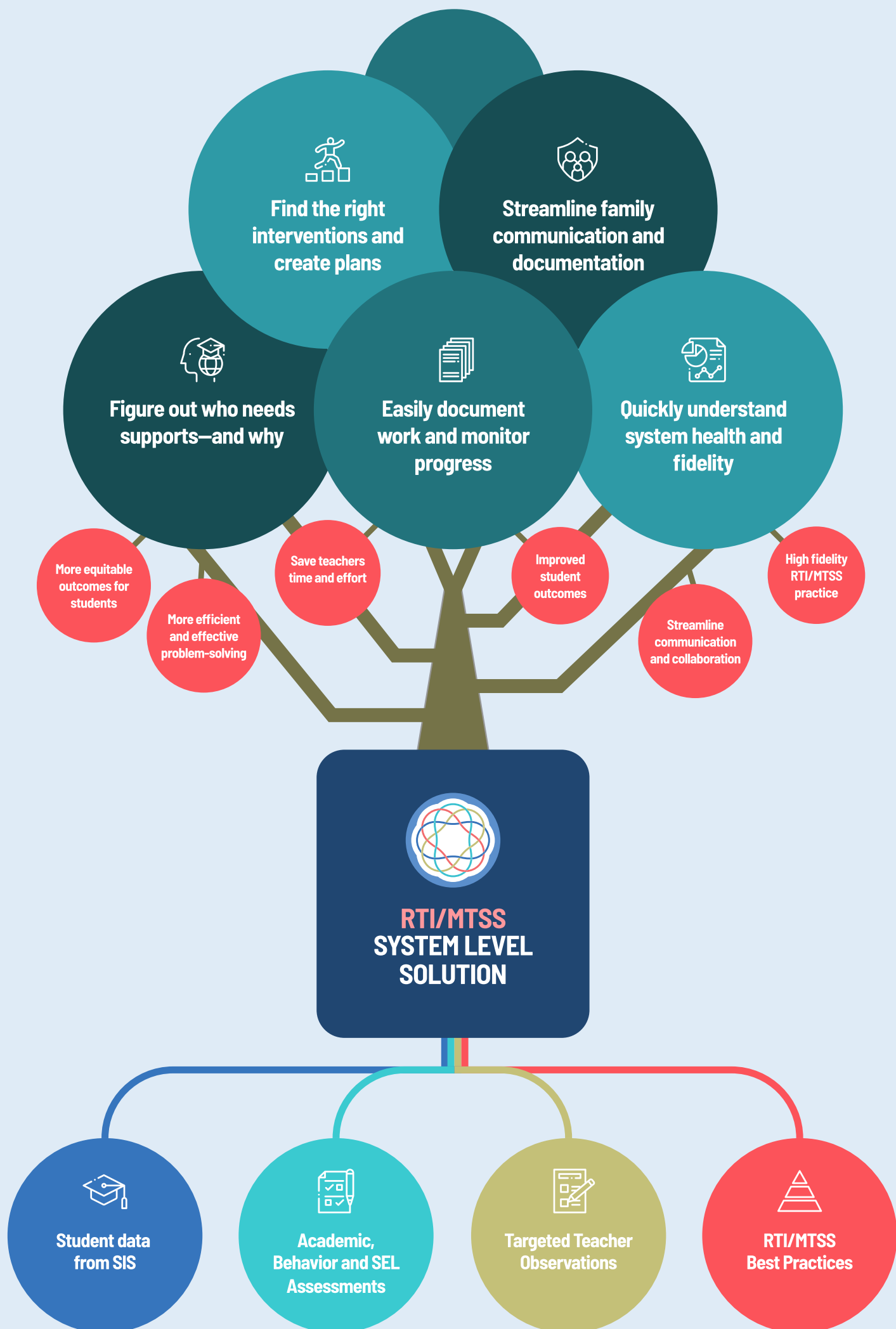




BRANCHING MINDS



Foundation

Student data from Student Information System

Ingest student rostering data and additional info supportive for whole child picture (at risk indicators, attendance concerns, and more)

Academic, Behavior and SEL Assessments

Ingest external universal screeners, benchmarks, and progress monitors, and provides behavior progress monitors, behavior incident tracking, and the SECA SEL assessment

Targeted Teacher Observations

Collect insights from teachers based on learning science to understand students strengths and challenges across academic, behavior, cognitive and SEL needs

RTI/MTSS Best Practices

Guide teachers and administrators through best practice workflows that support collaborative problem solving at the systems, groups and individual student level.

Solution

Figure out who needs supports—and why

Help educators tier based on data, and collect teacher observations based on academic, cognitive, sel and behavioral needs to inform who needs support and why, proactively.

Find the right interventions and create plans

The most comprehensive and instructive library of evidence-based learning supports of any MTSS platform. Our supports include hundreds of paid evidence-based intervention programs, as well as nearly a thousand free evidence-based strategies, activities, and resources curated based on student need for academics, behavior and SEL to help teachers match interventions to students' needs.

Easily document work and monitor progress

Generate automated to-do lists for each educator, and present graphs that support problem-solving, while monitoring both fidelity and progress.

Streamline family communication and documentation

Templated family communications, student intervention and behavior incident reports, as well as and communication, meeting, and supporting document archives.

Quickly understand system health and fidelity

Capture RTI/MTSS infrastructure benchmarking, and generate tier movement reports, benchmark reports, family communication reports, intervention usage reports, and more.

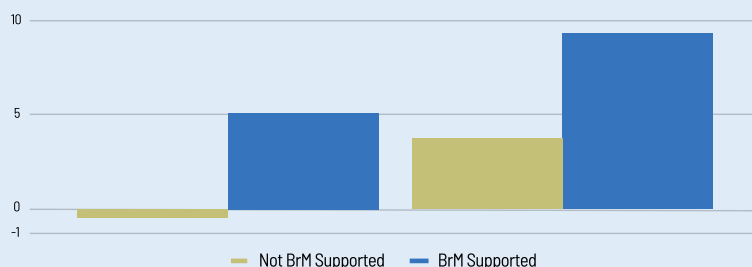
Benefits

Improved student outcomes in academics, behavior and SEL

Students supported on BrM experienced an average of 5 percentile points reading gains, while students not supported decreased an average of .3 percentile points over 1.5 years.

$t(137) = 2.2, p = .028, d = .38$

Percentile Growth on NWEA MAP



More equitable outcomes for students

Educators have the data to be able to make unbiased, student-focused decisions and admins gain visibility into who is receiving support across subgroups; minority students supported on BrM see a significantly higher rate of growth.

Save teachers time and effort

Teachers find streamlined documentation and ability to automate data ingestion from multiple sources improves the efficiency of preparing for problem-solving meetings

Streamline communication and collaboration

Insights across all domains enable users to work together and learn from each other when supporting shared students; and easily keep each other and families updated on progress

High fidelity RTI/MTSS practice

Scaffolded best-practice enables educators to improve the quality of their practice, while fidelity and infrastructure reports allow administrators to understand drive towards system health

Effective and efficient problem-solving conversations

Data visualizations, collaborative input, and holistic student view, improves the quality of the problem-solving conversation during meetings