



CF-H & CFK-H HINGED SAFETY SEISMIC FLOOR SYSTEMS



PRODUCT DESCRIPTION

The CF-H Expansion Joint Cover is an ideal Cover for Surface Mount Floor to Floor applications.

This Series is suitable to be used in Areas where Vehicular Loads and High Volume Pedestrian Loads are required. It can be used for both renovation and new construction projects.

The components of the CF-H cover are:

- Continuous Aluminium Hinged Profile.
- Continuous Aluminium Cover Profile.

The CF-H is a Complete Aluminium Expansion Joint Cover Profile.

The Profile is specifically designed to be of Hassle-Free Surface Mount Installation in Areas where Heavy Loads are present. It is suitable for all Floor Finishes. The Cover has Serrations on it to ensure slip resistance.

The Heavy Duty Aluminium Anchor Frames with Interlocking Hinged design assure proper alignment.

The Profile can also accommodate Slab Offset in Floor Elevations.

This Cover complies with AASHTO HS - 20 Load Carrying Capacity.

RECOMMENDED FOR

- Applications where Low Maintenance Profiles are desired.
- Areas where High Volume Pedestrian Loads are expected.
- Areas where Vehicular Loads are expected.
- Retrofit as well as new installations.

TECHNICAL DATA

Hinged Profile and Cover Profile

The Aluminium profiles are extruded using one of the multiple Aluminium alloys and tempers.

The selection of the Aluminium grade depends on the use case of the profile.

Aluminium grade AA 6063 is the preferred choice for most profiles.



CF-H & CFK-H HINGED SAFETY SEISMIC FLOOR SYSTEMS

Optional: Vapour Barrier

Material	Ethylene Propylene Diene Monomer.
Color	Black.
Tensile Strength	1431 psi - ASTM D 412.
Tear Resistance (lbf/in.)	204 - ASTM D 624.
Puncture Resistance (lbf)	60 at 4.49" - ASTM E 154.

STORAGE & HANDLING

ALUMINIUM

• Transportation

Aluminium can be damaged during transport and constitutes in the form of scratches and wear marks that can lead to subsequent interfacial corrosion. Such damage prevents satisfactory surface treatment of the profiles.

The appearance of Aluminium is affected by minor transportation damages to the surface of the material but mechanical properties of the metal, however, remain unaffected.

To prevent such damage to the material, it is important for the Aluminium profiles to be packaged in strong paper, plastic or bubble wrap during any moving and transportation to prevent individual profile surfaces from bumping against each other thus causing scratches.

• Storage

It is important to note that Aluminium gets easily affected by water and moisture.

Aluminium alloys with higher magnesium content are sensitive to water and condensation, whereas purer alloys have greater resistance to the same.

Moisture damage to Aluminium appears as white patches/ spots or dark discolouration marks and can be observed in the event if water or condensation is trapped between Aluminium profile stacked upon or lying very close to each other.

SUBSTRATE REQUIREMENT & PREPARATION

- The surface must have enough clearance from the reinforcement to provide enough space for the anchor.
- The surface must be level to avoid gaps.
- The gap must be uniform and in a straight line.

INSTALLATION

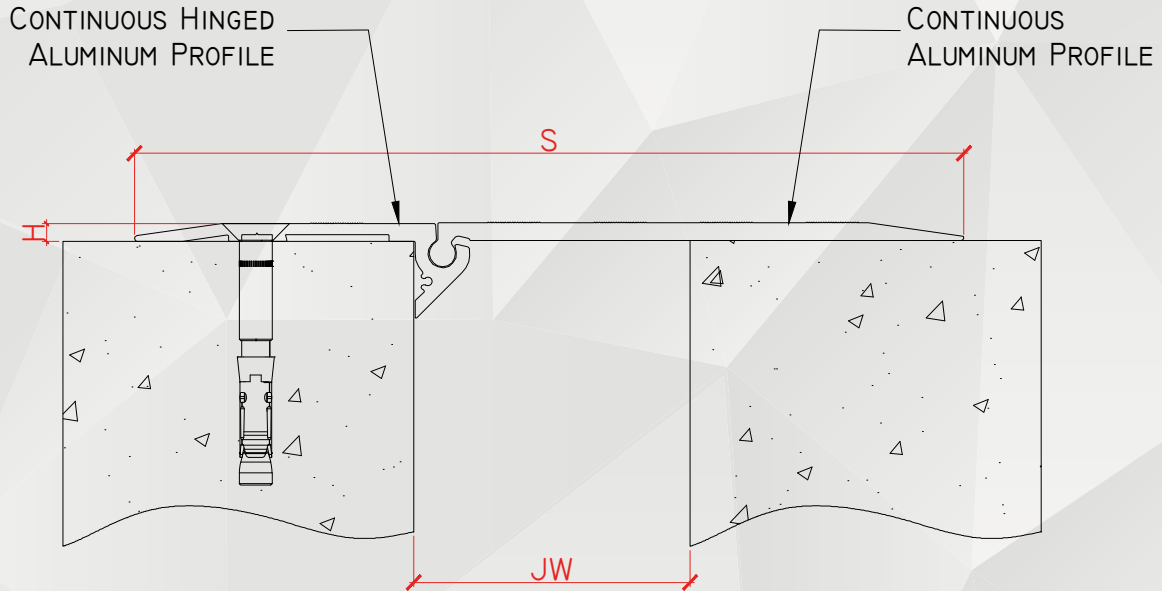
Kindly refer to the detailed GENOTEK installation instructions or contact your nearest GENOTEK Technical Centre for the same.

PACKAGING

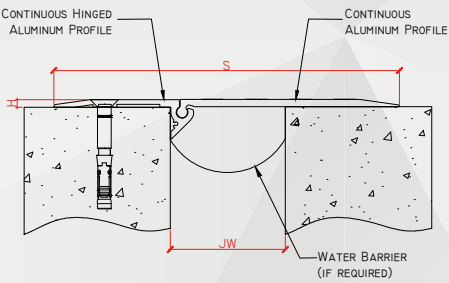
- Aluminium Profile: Standard Supply Length of 3.00 LM per piece.
- Moisture Barrier: Variable Length as per requirement.
- Accessories: Original Manufacturer Packing.



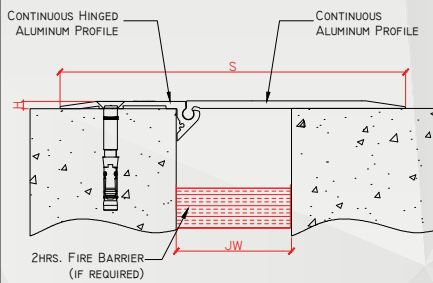
CF-H & CFK-H HINGED SAFETY SEISMIC FLOOR SYSTEMS



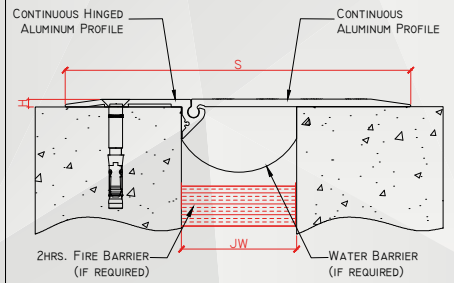
OPTIONAL: WITH WATER BARRIER



OPTIONAL: WITH FIRE BARRIER



OPTIONAL: WATER BARRIER & FIRE BARRIER



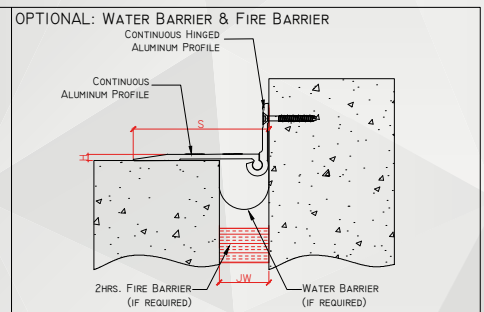
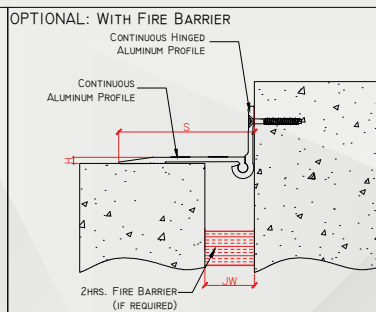
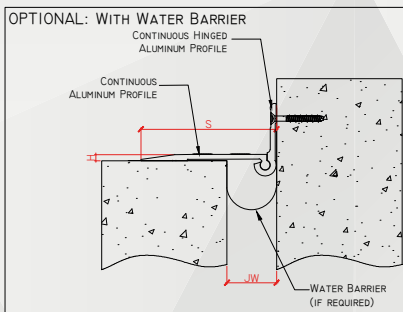
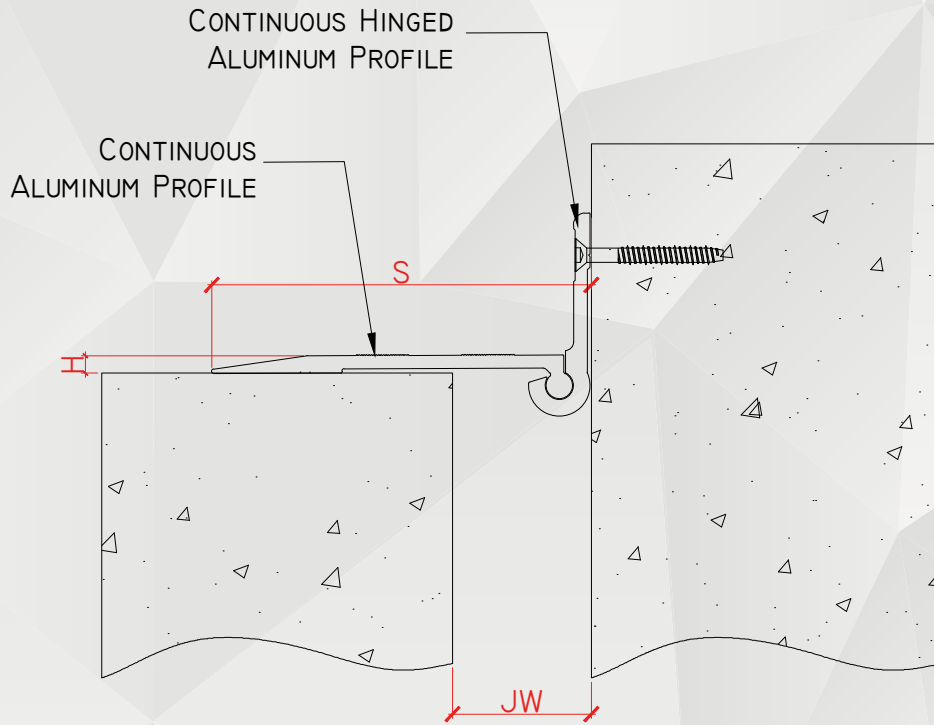
<input checked="" type="checkbox"/>	SKU	NAME	JOINT WIDTH, JW (MM)	HEIGHT, H (MM)	SIGHTLINE, S (MM)	MOVEMENT CAPACITY (%)	LOAD CAPACITY (KN)
<input type="checkbox"/>	CF506238H	CF-238H	50	6	238	±50	35
<input type="checkbox"/>	CF1006300H	CF-300H	100	6	300	±50	30
<input type="checkbox"/>	CF1009302H	CF-302H	100	9	302	±50	35
<input type="checkbox"/>	CF15010415H	CF-415H	150	10	415	±50	35
<input type="checkbox"/>	CF2009420H	CF-420H	200	9	420	±50	35
<input type="checkbox"/>	CF25016550H	CF-550H	250	16	550	±50	35

NOTE: 1. THE ABOVE DRAWINGS ARE FOR ILLUSTRATION ONLY, PLEASE SEE THE SYSTEM DRAWING OF THE PROFILE FOR THE SECTION DETAILS AS SPECIFICATION MAY VARY.

2. THE ABOVE SIZES ARE FOR REFERENCE, ADDITIONAL SIZES MAY BE AVAILABLE AND / OR CUSTOMIZED. KINDLY CONTACT GENOTEK TECHNICAL SUPPORT FOR MORE INFORMATION.



CF-H & CFK-H HINGED SAFETY SEISMIC FLOOR SYSTEMS



<input checked="" type="checkbox"/>	SKU	NAME	JOINT WIDTH, JW (MM)	HEIGHT, H (MM)	SIGHTLINE, S (MM)	MOVEMENT CAPACITY (%)	LOAD CAPACITY (KN)
<input type="checkbox"/>	CFK506138H	CFK-I38H	50	6	138	±50	35
<input type="checkbox"/>	CFK1006200H	CFK-200H	100	6	200	±50	30
<input type="checkbox"/>	CFK1009202H	CFK-202H	100	9	202	±50	35
<input type="checkbox"/>	CFK15010298H	CFK-298H	150	10	298	±50	35
<input type="checkbox"/>	CFK2009310H	CFK-298H	200	9	310	±50	35
<input type="checkbox"/>	CFK25016434H	CFK-434H	250	16	434	±50	35

NOTE: 1. THE ABOVE DRAWINGS ARE FOR ILLUSTRATION ONLY, PLEASE SEE THE SYSTEM DRAWING OF THE PROFILE FOR THE SECTION DETAILS AS SPECIFICATION MAY VARY.

2. THE ABOVE SIZES ARE FOR REFERENCE, ADDITIONAL SIZES MAY BE AVAILABLE AND / OR CUSTOMIZED. KINDLY CONTACT GENOTEK TECHNICAL SUPPORT FOR MORE INFORMATION.