

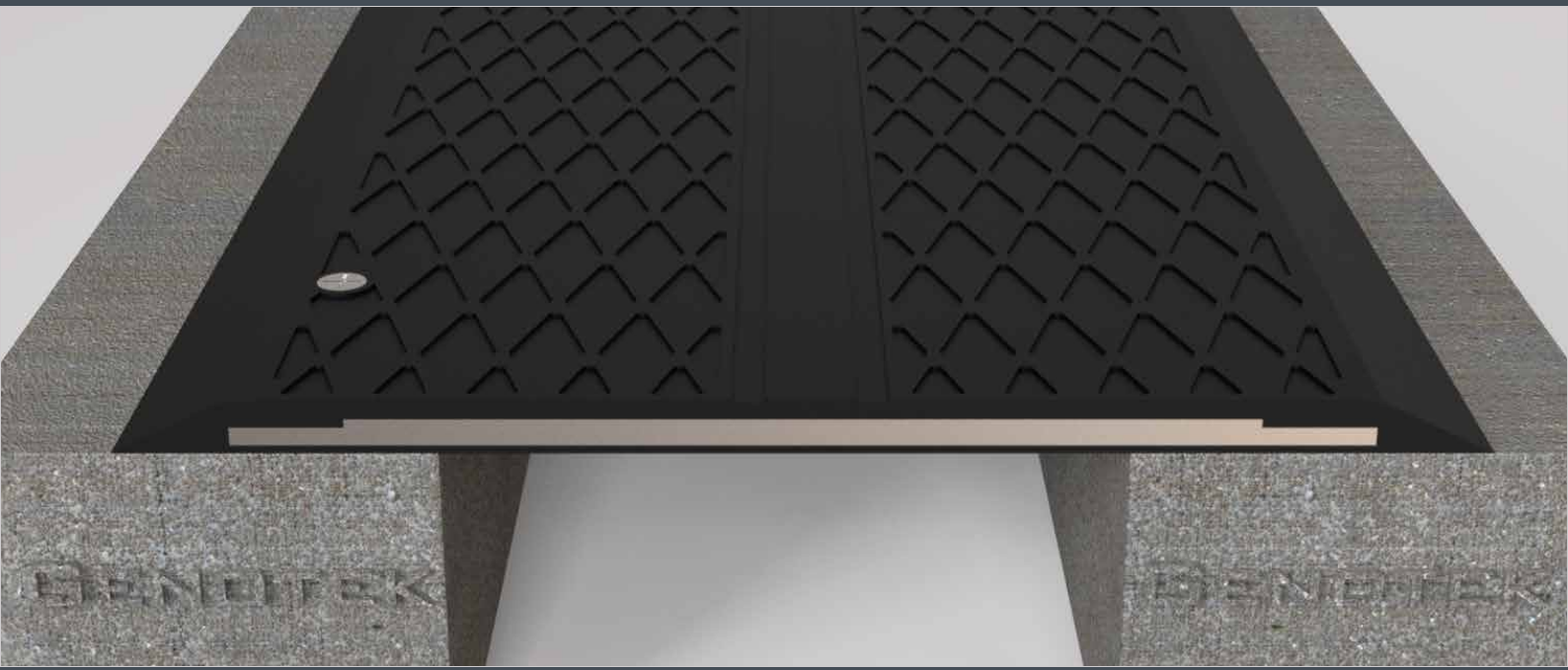


# INSTALLATION INSTRUCTION



GENOTEK

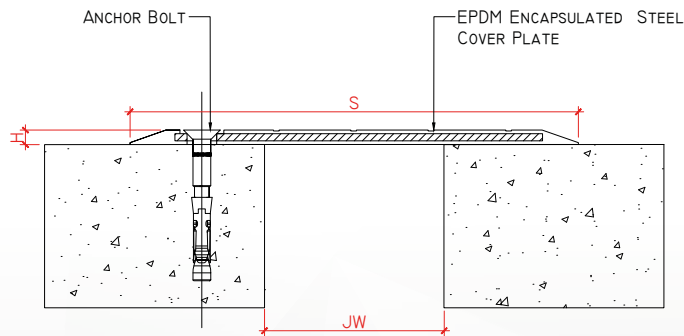
## GEN-1000B SERIES FLOOR EXPANSION JOINT COVER



### SYSTEM DESCRIPTION

GENOTEK GEN-1000B Series Floor Expansion Joint System is an Elastomeric Rubber + Steel Expansion Joint Cover profile designed for simple hassle-free surface mount application. The system is a low maintenance easily replaceable profile and requires no block-out. The Profile consists of Elastomeric Rubber Encapsulated Steel Plates that can accommodate Seismic/Multi-Directional Movement and Vertical Deflection between Slabs.

### SYSTEM COMPONENTS



### COMPONENT LIST

ITEM NUMBER	DESCRIPTION	PART NUMBER
1	EPDM ENCAPSULATED STEEL COVER PLATE	GEN-1000B
2	ANCHOR BOLT	HLC-SK OR EQUAL



## GEN-1000B SERIES FLOOR EXPANSION JOINT COVER

### INSTALLATION INSTRUCTION

The following installation instructions are very important. Read them carefully and be sure you understand them completely before you begin any work.

- **SUBSTRATE**

GENOTEK recommends that the concrete poured around joints and block-outs be vibrated before it can cure. This will help minimize air pockets in the concrete around the joint and block-outs. In addition, GENOTEK recommends leaving the concrete forms in place in the block-out until just prior to the installation of the joint cover system. This will help protect the block-out from potential damage during the work of other sections.

- **SURFACE PREPARATION**

The concrete surface must be clean, dry, and free of all dirt and contaminants and must be leveled. Any significant unevenness in the deck surface or spalling at the joint edge must be repaired with a suitable patching material.

#### **STEP 1. REVIEW APPROVED SHOP DRAWING**

Review GENOTEK approved shop drawings for types and locations.

#### **STEP 2. LAYING**

Start the installation of the Cover Plate by placing a length of the Cover Plate over the joint to determine the exact length needed.

#### **STEP 3. CUTTING**

Cut the Cover Plate to the required length. For the floor to floor condition, place the edge of the Cover Plate at 75mm from the edge of the slab (see figure 1).

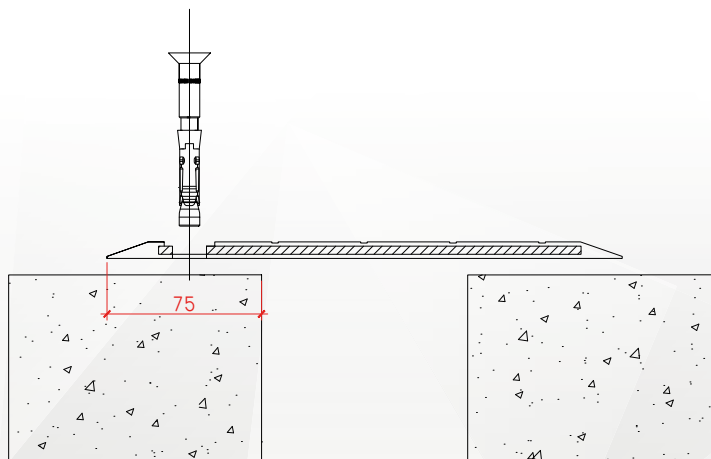


Figure 1.



## GEN-1000B SERIES FLOOR EXPANSION JOINT COVER

### **STEP 4. MARKING**

Mark the locations for the anchor bolts using the Cover Plate as a template.

### **STEP 5. DRILLING**

Remove the Cover Plate and drill holes on the marked location for anchor bolts. Use the appropriate size and type of drill bit as per the manufacturer of the anchor bolts.

### **STEP 6. ANCHORING**

Reposition the Cover Plate to the slab and anchor using the GENOTEK supplied anchor bolts. For any additional length of Cover Plate, repeat the installation procedure.

### **STEP 7. CLEANING**

Remove all residue and foreign matter from the area. Clean the GENOTEK expansion joint with proper cleaner. After cleaning, protect the profile until the final inspection.