



OF-1660 & OFK-1660 HEAVY DUTY SURFACE MOUNT FLOOR SYSTEMS



PRODUCT DESCRIPTION

The OF - 1660 Expansion Joint Cover is an ideal Cover for Surface Mounted Floor to Floor applications.

The Series is suitable for areas where Light Vehicular and High Volume Pedestrian Loads are required and can be used in renovation as well as new construction projects.

The components of the OF-1660 cover are:

- Extruded Aluminium Surface Mount Support Profiles.
- Extruded Aluminium Centre Plates which can accommodate the Expansion and Contraction in the adjacent concrete slabs.

The OF - 1660 is a complete Aluminium Surface Mounted Expansion Joint Cover Profile.

The Profile is suitable for areas where Light Vehicular and High Volume Pedestrian Loads are required.

It is an extremely Secure Profile and provides an Aesthetically pleasing design.

The unique Interlocking Centre Plates allow for Horizontal Movement in the Floor Slab, as well as some Vertical Deflection.

The OF - 1660 is a Low Maintenance and Long Lasting Profile, thus saving downtime on repairs and is Easy to Install significantly reducing the labour and time required for Installation.

RECOMMENDED FOR

- Parking Structures
- Pedestrian Bridges
- Stadium Concourses
- Areas where High Volume Foot Traffic is expected

TECHNICAL DATA

Support Profiles

The Aluminium profiles are extruded using one of the multiple Aluminium alloys and tempers.

The selection of the Aluminium grade depends on the use case of the profile.

Aluminium grade AA 6063 is the preferred choice for most profiles.



OF-1660 & OFK-1660 HEAVY DUTY SURFACE MOUNT FLOOR SYSTEMS

Optional: Vapour Barrier

Material	Ethylene Propylene Diene Monomer.
Color	Black.
Tensile Strength	1431 psi - ASTM D 412.
Tear Resistance (lbf/in.)	204 - ASTM D 624.
Puncture Resistance (lbf)	60 at 4.49" - ASTM E 154.

STORAGE & HANDLING

ALUMINIUM

• Transportation

Aluminium can be damaged during transport and constitutes in the form of scratches and wear marks that can lead to subsequent interfacial corrosion. Such damage prevents satisfactory surface treatment of the profiles.

The appearance of Aluminium is affected by minor transportation damages to the surface of the material but mechanical properties of the metal, however, remain unaffected.

To prevent such damage to the material, it is important for the Aluminium profiles to be packaged in strong paper, plastic or bubble wrap during any moving and transportation to prevent individual profile surfaces from bumping against each other thus causing scratches.

• Storage

It is important to note that Aluminium gets easily affected by water and moisture.

Aluminium alloys with higher magnesium content are sensitive to water and condensation, whereas purer alloys have greater resistance to the same.

Moisture damage to Aluminium appears as white patches/ spots or dark discolouration marks and can be observed in the event if water or condensation is trapped between Aluminium profile stacked upon or lying very close to each other.

SUBSTRATE REQUIREMENT & PREPARATION

- The surface must have enough clearance from the reinforcement to provide enough space for the anchor
- The surface must be level to avoid gaps
- The gap must be uniform and in a straight line

INSTALLATION

Kindly refer to the detailed GENOTEK installation instructions or contact your nearest GENOTEK Technical Centre for the same.

PACKAGING

- Aluminium Support Profile: Standard Supply Length of 3.00 LM per piece.
- Moisture Barrier: Variable Length as per requirement.
- Accessories: Original Manufacturer Packing.

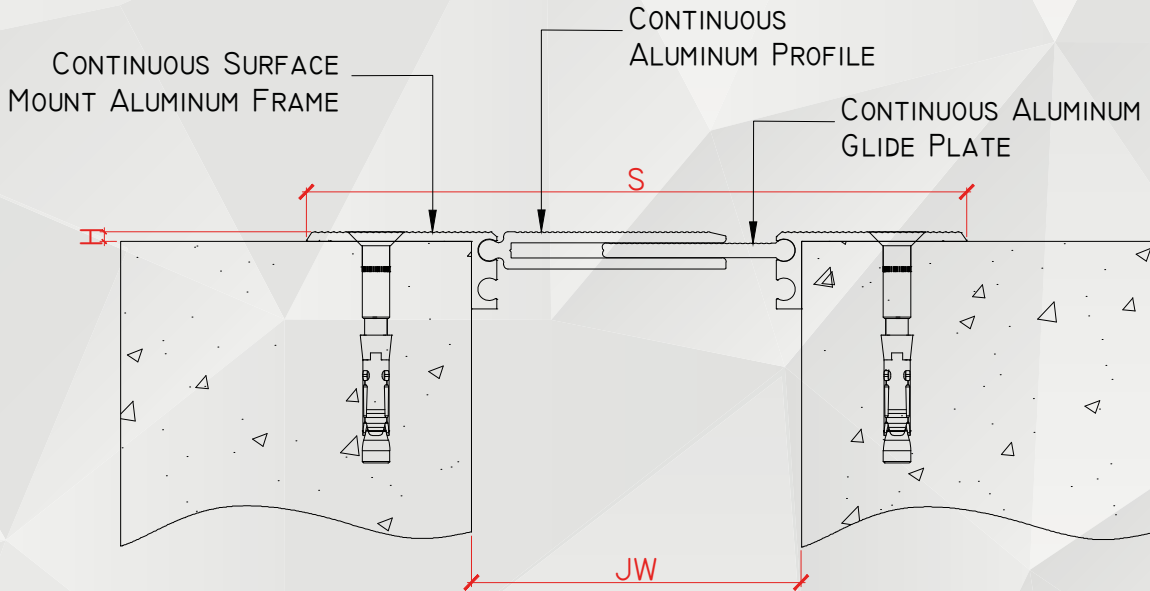


TECHNICAL DATA SHEET

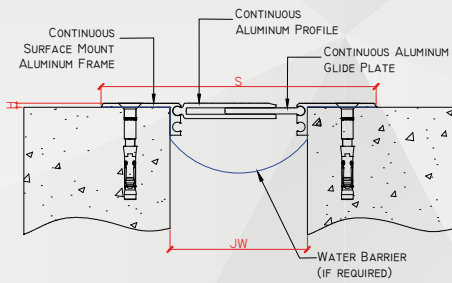


GENOTEK

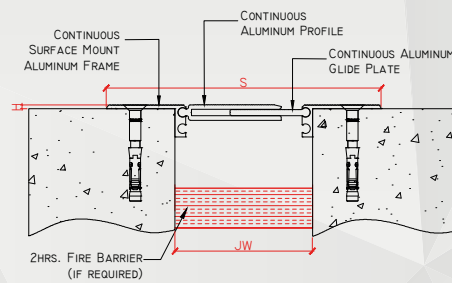
OF-1660 & OFK-1660 HEAVY DUTY SURFACE MOUNT FLOOR SYSTEMS



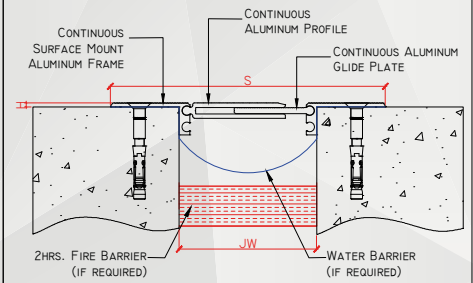
OPTIONAL: WITH WATER BARRIER



OPTIONAL: WITH FIRE BARRIER



OPTIONAL: WATER BARRIER & FIRE BARRIER



<input checked="" type="checkbox"/>	SKU	NAME	JOINT WIDTH, JW (MM)	HEIGHT, H (MM)	SIGHTLINE, S (MM)	MOVEMENT CAPACITY (%)	LOAD CAPACITY (KN)
<input type="checkbox"/>	OF16605028150	OF-1660-50	50	28	150	±25	35
<input type="checkbox"/>	OF16607528195	OF-1660-75	75	28	195	±25	35
<input type="checkbox"/>	OF166010028220	OF-1660-100	100	28	220	±25	35
<input type="checkbox"/>	OF166012528240	OF-1660-125	125	28	240	±25	35
<input type="checkbox"/>	OF166015028250	OF-1660-150	150	28	270	±25	35
<input type="checkbox"/>	OF166020028320	OF-1660-200	200	28	320	±25	35

NOTE: 1. THE ABOVE DRAWINGS ARE FOR ILLUSTRATION ONLY, PLEASE SEE THE SYSTEM DRAWING OF THE PROFILE FOR THE SECTION DETAILS AS SPECIFICATION MAY VARY.

2. THE ABOVE SIZES ARE FOR REFERENCE, ADDITIONAL SIZES MAY BE AVAILABLE AND / OR CUSTOMIZED. KINDLY CONTACT GENOTEK TECHNICAL SUPPORT FOR MORE INFORMATION.

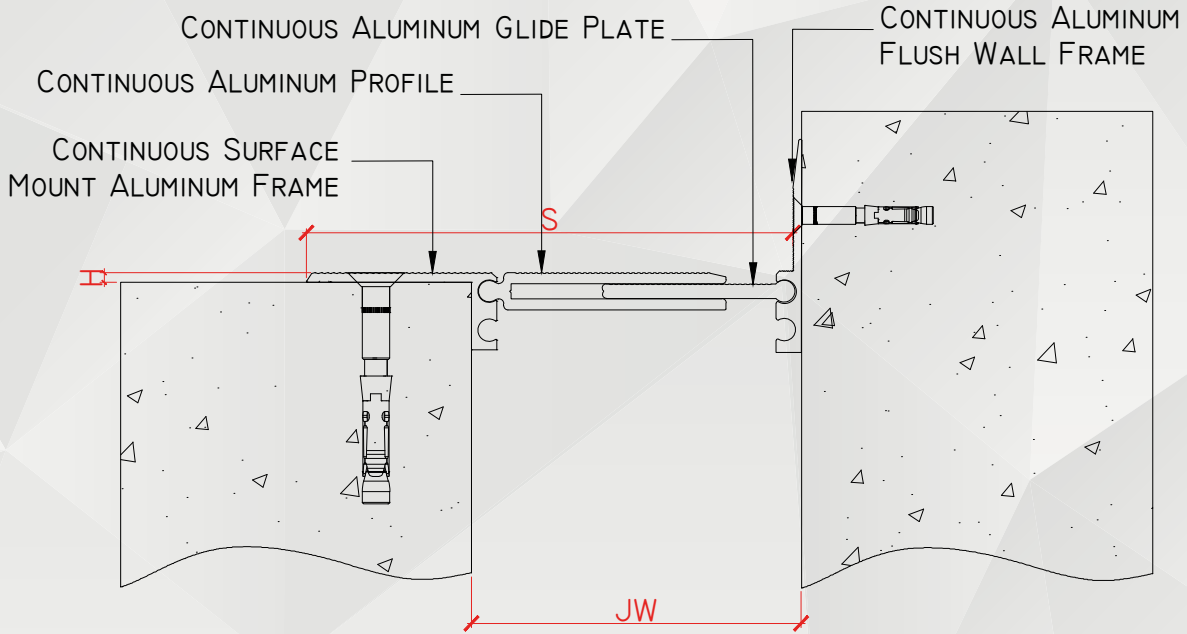


TECHNICAL DATA SHEET

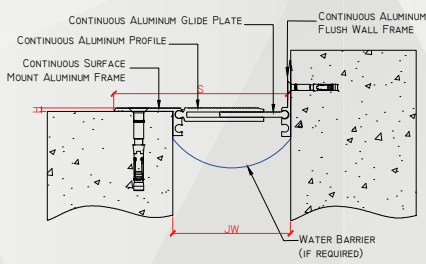


GENOTEK

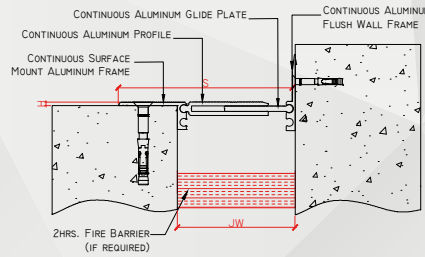
OF-1660 & OFK-1660 HEAVY DUTY SURFACE MOUNT FLOOR SYSTEMS



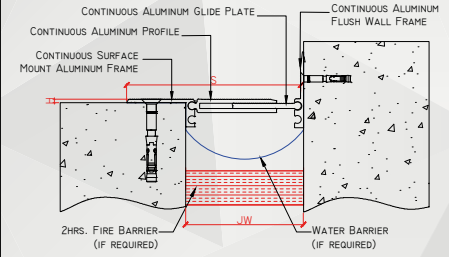
OPTIONAL: WITH WATER BARRIER



OPTIONAL: WITH FIRE BARRIER



OPTIONAL: WATER BARRIER & FIRE BARRIER



<input checked="" type="checkbox"/>	SKU	NAME	JOINT WIDTH, JW (MM)	HEIGHT, H (MM)	SIGHTLINE, S (MM)	MOVEMENT CAPACITY (%)	LOAD CAPACITY (KN)
<input type="checkbox"/>	OFK16605028105	OFK-1660-50	50	28	105	±25	35
<input type="checkbox"/>	OFK16607528125	OFK-1660-75	75	28	125	±25	35
<input type="checkbox"/>	OFK166010028150	OFK-1660-100	100	28	150	±25	35
<input type="checkbox"/>	OFK166012528180	OFK-1660-125	125	28	180	±25	35
<input type="checkbox"/>	OFK166015028200	OFK-1660-150	150	28	200	±25	35
<input type="checkbox"/>	OFK166020028262	OFK-1660-200	200	28	262	±25	35

NOTE: 1. THE ABOVE DRAWINGS ARE FOR ILLUSTRATION ONLY, PLEASE SEE THE SYSTEM DRAWING OF THE PROFILE FOR THE SECTION DETAILS AS SPECIFICATION MAY VARY.

2. THE ABOVE SIZES ARE FOR REFERENCE, ADDITIONAL SIZES MAY BE AVAILABLE AND / OR CUSTOMIZED. KINDLY CONTACT GENOTEK TECHNICAL SUPPORT FOR MORE INFORMATION.