

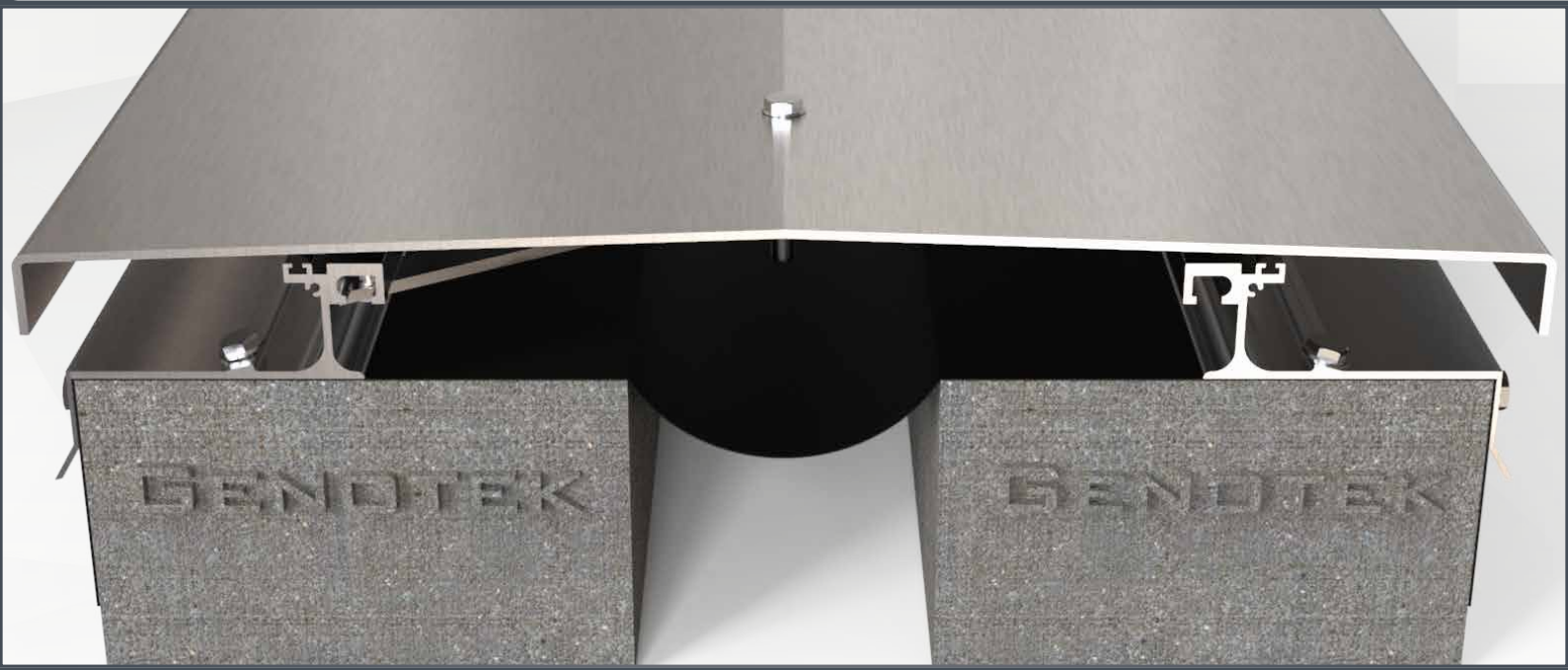


INSTALLATION INSTRUCTION



GENOTEK

R-2001 AND RK-2001 ROOF EXPANSION JOINT COVER



The following installation instructions are very important. Read them carefully, and be sure you understand them completely before you begin any work.

STORAGE & HANDLING

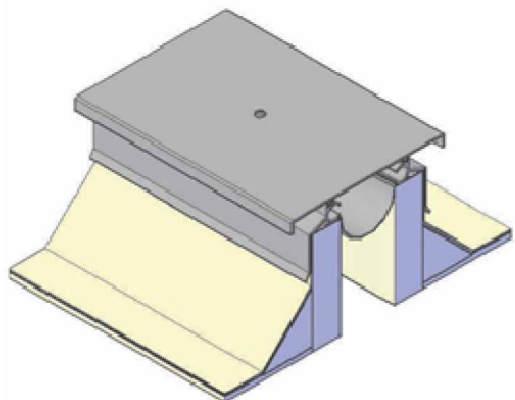
The expansion joint covers are shipped unassembled . If the expansion joint covers were unassembled at the factory , Installation instructions are as follows ; Upon receipt, this product should be stored in the horizontal position in a clean, dry location. This is a finished product. Store this product in a protected area.

R-2001 SERIES, FLOOR COVERS PARTS LIST

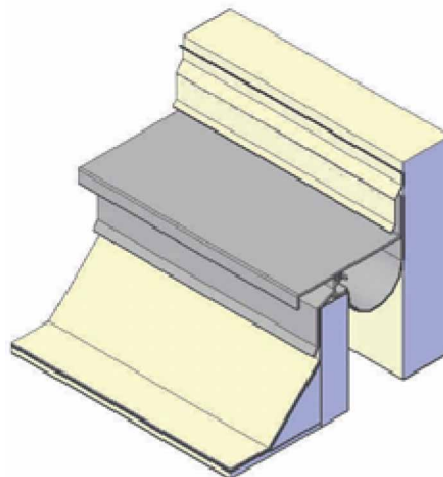
ITEM NO.	DESCRIPTION
1	Base Member
2	Cover Plate
3	Centering Bar
4	Centering Bar Bolt and Washer
5	Splice Cover Plate



R-2001 AND RK-2001 ROOF EXPANSION JOINT COVER



R-2001



RK-2001

INSTALLATION

Step 1: Install Fire Barrier (If Required)

If applicable, install fire barrier at this time. Reference the product specific fire barrier installation instructions for information regarding fire barrier installations.

- Fire Barrier should be installed on the roof slab, beneath the blocking materials.

Step 2: Install Blocking Materials (By Others)

R-2001 & RK-2001 roof expansion joint cover models are designed for installations on roof blocking. Install the blocking (provided by others) in accordance with the contract documents and corresponding approved GENOTEK shop drawings.

Step 3: Install Water Barrier

Water barrier should be installed at this time. Reference the supplementary GENOTEK “EPDM Water Barrier Installation Instructions” for information regarding EPDM installations.

Step 4: Install Base Members

1. Select one base member and place it into its installed position. Ensure that the base member is level, aligned, and plumb with the edge of the joint.
 2. Using the base members slotted anchor holes as a template, mark and pre-drill the blocking anchor holes.
 3. Secure the base member to the blocking using the factory provided anchors (BT 6x30) and washers. Tighten the anchors using a hand nut driver.
- Repeat for each subsequent base member, and for the opposite side of the joint for R-2001 models.

IMPORTANT NOTE

It is necessary to leave a gap between adjoining base members. This gap allows for thermal expansion, 2-3 mm gap is recommended for extrusions 3 m length or less; 6 mm gap is recommended for extrusions exceeding 3 m length.



R-2001 AND RK-2001 ROOF EXPANSION JOINT COVER

Step 5: Attach Base Member Splice Covers

Splice covers are provided for base member splice locations. To complete a base member splice, place a continuous bead of silicone sealant (by others) on the surface of each mating end of base member section.

Select a base member splice cover and place it over the gap between mating base member sections, and press it firmly onto the silicone sealant. While ensuring that the splice cover remains centered over the gap, secure the splice cover to one base member using factory provided BT 8x75 screws 500 mm O.C.

Step 6a: Install Centering Bars & Cover Plates – R-2001 Models

Install Centering Bars – R-2001 Models

Select the section of cover plate being installed and the appropriate number of centering bars and centering bar bolts. Each pre-drilled cover plate bolt hole requires (1) centering bar, (1) centering bar bolt, and (1) washer.

Select a centering bar and insert the spheres into the base member's track using the notch provided in the center of the base member. Use the cover plate's pre-drilled bolt holes as a reference for positioning each centering bar.

- Repeat as necessary until each successive centering bar has been installed.

Centering bars must be installed parallel to one another.

Attach Cover Plates–R-2001 Models

Select one section of cover plate and place it into its installed position over the joint. Secure the cover plate to each centering bar using a factory provided bolt and washer. Centering bar bolts should be tightened by hand. Do not over-tighten.

IMPORTANT NOTE:

It is necessary to leave a gap between adjoining cover plates. This gap allows for thermal expansion.

An 2-3 mm gap is recommended for plates 3 m. length or less; 6 mm . gap is recommended for plates exceeding 3 m. length.

Step 6b - Install Cover Plates–RK-2001 Models

Pre-drill the Wall Anchor Holes:

Select the section of cover plate being installed and place it into its installed position over the joint. Using the pre-slotted cover plate anchor holes as a template, mark and drill the anchor holes on the wall. Anchors should be spaced a maximum of 3" (76mm) from each end, with each successive anchor spaced at 20" (508mm) O.C.



R-2001 AND RK-2001 ROOF EXPANSION JOINT COVER

Attach Cover Plate

(For RK-2001 models with centering bars, proceed to Step 6C)

For RK-2001 models that do not require centering bars, the cover plate should be attached at this time. Secure the cover plate to the wall using the factory provided anchors.

- Install flashing (by others) and seal

Step 6C: Install Centering Bars & Cover Plate—RK-2001 Models

Centering bars will be provided for select RK-2001 models, depending on joint size and movement criteria. Reference GENOTEK approved shop drawings for applicable models.

Select the section of cover plate being installed and the appropriate number of centering bars and centering bar bolts. Each pre-drilled cover plate bolt hole requires (1) centering bar, (1) centering bar bolt, and (1) washer.

Select a centering bar and insert the sphere into the base member's track using the notches provided in the base member. Use the cover plate's pre-drilled bolt holes as a reference for positioning each centering bar. Centering bars must be installed parallel to one another.

Once all centering bars have been attached to the base member, place the cover plate into its installed position. Thread (1) centering bar bolt and (1) washer through the cover plate to each centering bar. Centering bar bolts should not be fully tightened at this point.

Attach Wall Anchor

Once all centering bars have been loosely secured to the cover plate, secure the cover plate to the wall using the factory provided anchors. After the wall anchors have been installed, go back and tighten each centering bar bolt. Centering bar bolts should be tightened by hand. Do not over-tighten.

Step 7: Splice Cover Plate Sections

To splice mating sections of cover plates, place a continuous bead of silicone sealant (by others) across the entire width of each of the mating cover plate sections.

Place a factory provided splice cover over the splice location and press it firmly onto the silicone sealant. This procedure is designed to seal the splice cover.

Attach the splice cover to one of the mating cover plate sections using (2) of the screws provided by the factory. Ensure that the splice cover remains centered over the gap between the mating cover plate sections.