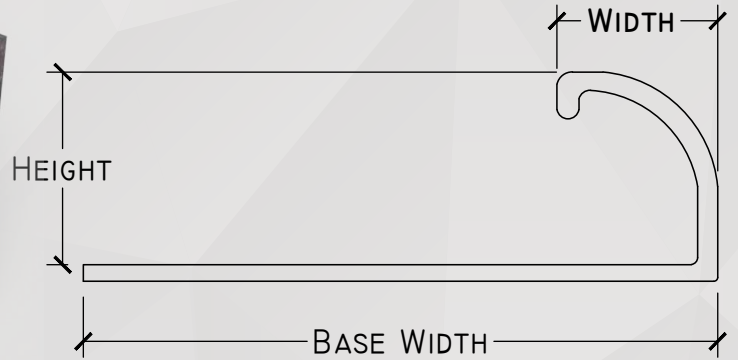
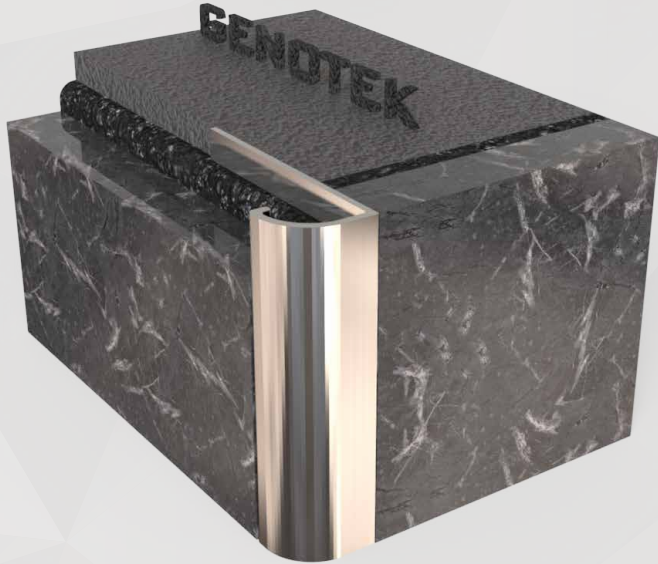




GENOTEK™ SK TILE TRIM



PRODUCT DESCRIPTION

GENOTEK™ SK is a line of profiles suitable for sealing and protecting the external corners of ceramic coverings, thus avoiding unsightly and fragile 45° cuts; the rounded form also affords symmetry and safety finishing to tile edges. **GENOTEK™ SK** allows the layer to execute his work rapidly and precisely with the only task of choosing the proper size of the profile in respect to the thickness of the tile.

TECHNICAL DATA

MATERIAL	STAINLESS STEEL 316 / STAINLESS STEEL 304 / ALUMINUM / BRASS / PVC
HEIGHT	4.5MM - 12.5MM
WIDTH	15MM
BASE WIDTH	25MM - 32MM
THICKNESS	0.6MM - 1MM
FINSIHES	SATIN, MATT, MIRROR
LENGTH	2.5 METERS / 2.7 METERS