



Z-4100A & ZK-4100A CENTRE BAR SEISMIC FLOOR SYSTEMS



PRODUCT DESCRIPTION

The Z - 4100 - A Expansion Joint Cover is an ideal Cover for Floor to Floor applications.

The Series is suitable for Interior and Exterior Areas where Multi-Directional/Seismic Movement and Heavy Loads are expected.

The components of the Z-4100A cover are:

- Extruded Aluminium Recessed Support Profiles.
- Aluminium Cover Plate.
- Galvanised Steel Turnbar.

The Z-4100A is a complete Aluminium Expansion Joint Cover Profile.

The Profile is recommended for Areas where Thermal and Multi-Directions/Seismic Movements and Heavy Duty Vehicular Loads are expected.

The Profile is specifically designed for High Volume Foot Traffic and Heavy Load Conditions and can be used with Multiple Floor Finishes.

RECOMMENDED FOR

- Interior and Exterior Areas where Thermal and Multi-Directional/Seismic Movement is expected.
- Applications where up to 100% Movement Capacity is required.

TECHNICAL DATA

Support Profiles & Cover Plate

The Aluminium profiles are extruded using one of the multiple Aluminium alloys and tempers.

The selection of the Aluminium grade depends on the use case of the profile.

Aluminium grade AA 6063 is the preferred choice for most profiles.

Turnbar

Material - Galvanised Steel.

Finish - "A" Coating (Corrosion protection).

Optional: Vapour Barrier

Material	Ethylene Propylene Diene Monomer.
----------	-----------------------------------

Color	Black.
-------	--------

Tensile Strength	1431 psi - ASTM D 412.
------------------	------------------------

Tear Resistance (lbf/in.)	204 - ASTM D 624.
---------------------------	-------------------

Puncture Resistance (lbf)	60 at 4.49" - ASTM E 154.
---------------------------	---------------------------



Z-4100A & ZK-4100A CENTRE BAR SEISMIC FLOOR SYSTEMS

STORAGE & HANDLING

ALUMINIUM

- **Transportation**

Aluminium can be damaged during transport and constitutes in the form of scratches and wear marks that can lead to subsequent interfacial corrosion. Such damage prevents satisfactory surface treatment of the profiles.

The appearance of Aluminium is affected by minor transportation damages to the surface of the material but mechanical properties of the metal, however, remain unaffected.

To prevent such damage to the material, it is important for the Aluminium profiles to be packaged in strong paper, plastic or bubble wrap during any moving and transportation to prevent individual profile surfaces from bumping against each other thus causing scratches.

- **Storage**

It is important to note that Aluminium gets easily affected by water and moisture.

Aluminium alloys with higher magnesium content are sensitive to water and condensation, whereas purer alloys have greater resistance to the same.

Moisture damage to Aluminium appears as white patches/spots or dark discolouration marks and can be observed in the event if water or condensation is trapped between Aluminium profile stacked upon or lying very close to each other.

SUBSTRATE REQUIREMENT & PREPARATION

- The surface must have enough clearance from the reinforcement to provide enough space for the anchor.
- The surface must be level to avoid gaps.
- The gap must be uniform and in a straight line.

INSTALLATION

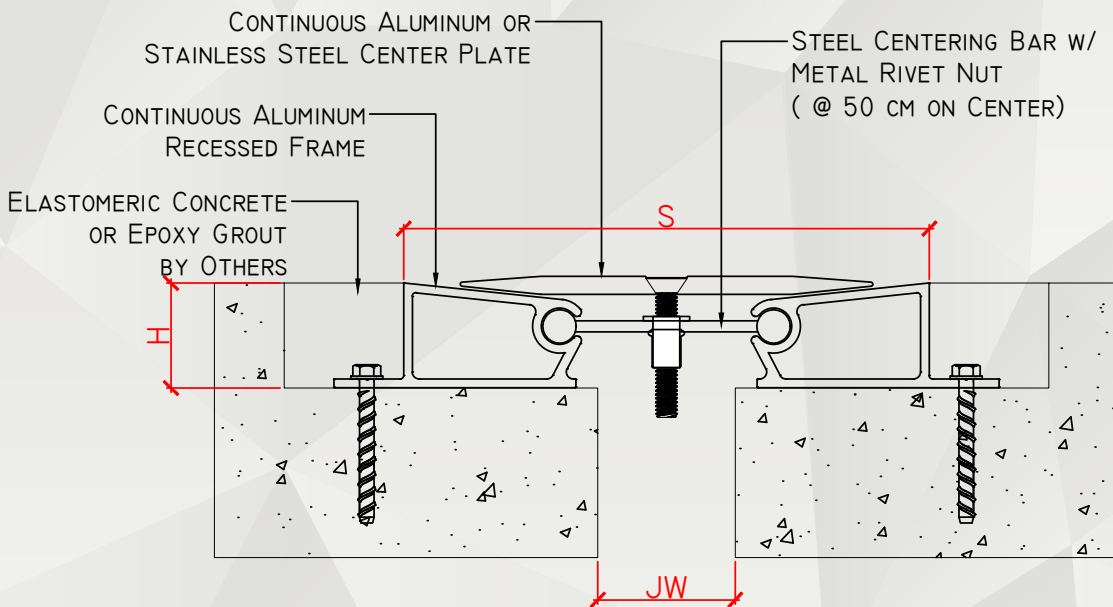
Kindly refer to the detailed GENOTEK installation instructions or contact your nearest GENOTEK Technical Centre for the same.

PACKAGING

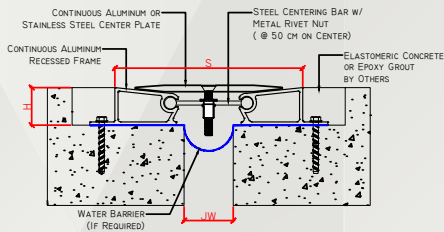
- Aluminium Support Profile & Cover Plate: Standard Supply Length of 3.00 LM per piece.
- Moisture Barrier: Variable Length as per requirement.
- Accessories: Original Manufacturer Packing.



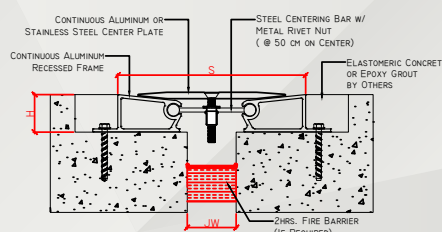
Z-4100A & ZK-4100A CENTRE BAR SEISMIC FLOOR SYSTEMS



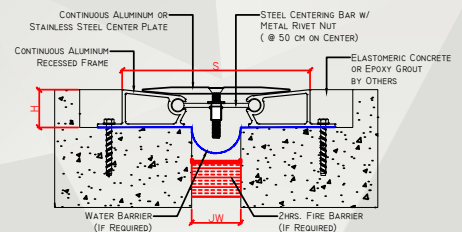
OPTIONAL: WITH WATER BARRIER



OPTIONAL: WITH FIRE BARRIER



OPTIONAL: WITH WATER BARRIER & FIRE BARRIER



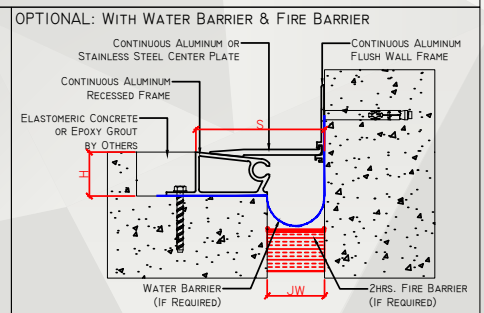
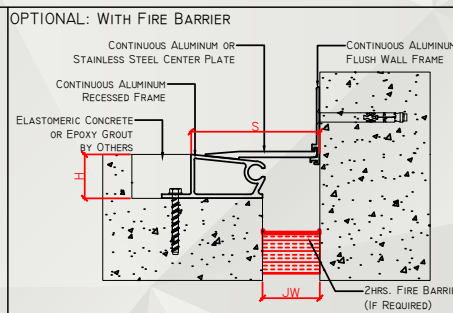
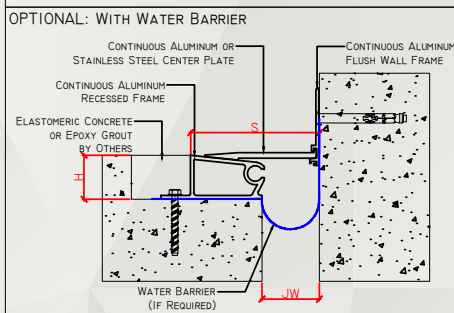
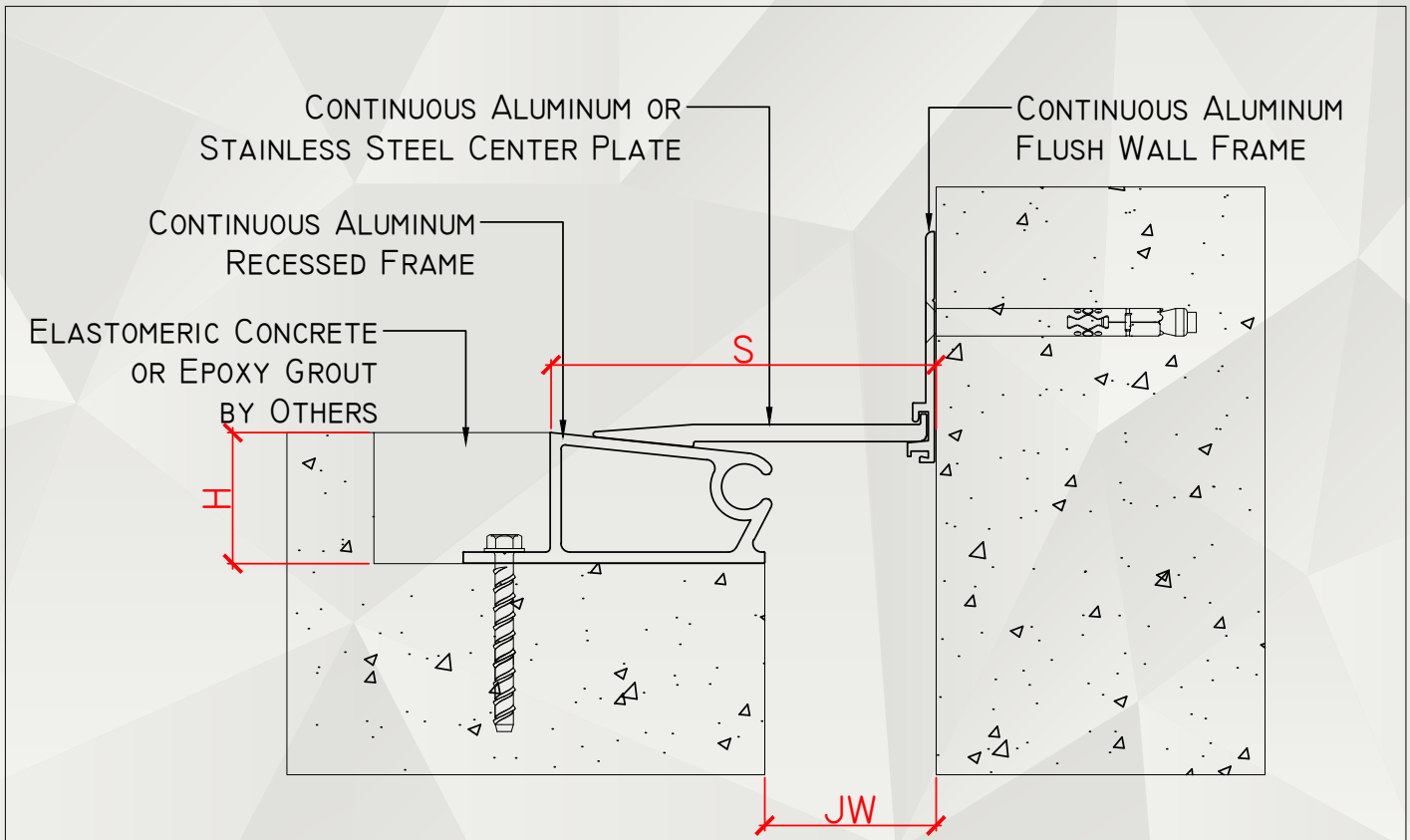
☑	SKU	NAME	JOINT WIDTH, JW (MM)	HEIGHT, H (MM)	SIGHTLINE, S (MM)	MOVEMENT CAPACITY %	LOAD CAPACITY (KN)
☐	Z4100A5038191	Z-4100A-50	40-60	38	191	±50	90
☐	Z4100A7538200	Z-4100A-75	70-80	38	200	±50	90
☐	Z4100A10050270	Z-4100A-100	90-120	50	270	±50	60
☐	Z4100A20050335	Z-4100A-200	130-200	50	335	±50	60

NOTE: 1. THE ABOVE DRAWINGS ARE FOR ILLUSTRATION ONLY, PLEASE SEE THE SYSTEM DRAWING OF THE PROFILE FOR THE SECTION DETAILS AS SPECIFICATION MAY VARY.

2. THE ABOVE SIZES ARE FOR REFERENCE, ADDITIONAL SIZES MAY BE AVAILABLE AND / OR CUSTOMIZED. KINDLY CONTACT GENOTEK TECHNICAL SUPPORT FOR MORE INFORMATION.



Z-4100A & ZK-4100A CENTRE BAR SEISMIC FLOOR SYSTEMS



<input checked="" type="checkbox"/>	SKU	NAME	JOINT WIDTH, JW (MM)	HEIGHT, H (MM)	SIGHTLINE, S (MM)	MOVEMENT CAPACITY %	LOAD CAPACITY (KN)
<input type="checkbox"/>	ZK4100A5038112	ZK-4100A-50	40-60	38	112	±50	90
<input type="checkbox"/>	ZK4100A5038112A	ZK-4100A-50	40-60	38	112	±50	90
<input type="checkbox"/>	ZK4100A7538137	ZK-4100A-75	70-80	38	137	±50	90
<input type="checkbox"/>	ZK4100A10050185	ZK-4100A-100	90-120	50	185	±50	60
<input type="checkbox"/>	ZK4100A20050268	ZK-4100A-200	130-200	50	268	±50	60

NOTE: 1. THE ABOVE DRAWINGS ARE FOR ILLUSTRATION ONLY, PLEASE SEE THE SYSTEM DRAWING OF THE PROFILE FOR THE SECTION DETAILS AS SPECIFICATION MAY VARY.

2. THE ABOVE SIZES ARE FOR REFERENCE. ADDITIONAL SIZES MAY BE AVAILABLE AND / OR CUSTOMIZED. KINDLY CONTACT GENOTEK TECHNICAL SUPPORT FOR MORE INFORMATION.