



Z-5001 AND ZK-5001 POP UP SEISMIC FLOOR EXPANSION JOINT COVERS



PRODUCT DESCRIPTION

The Z - 5001 Expansion Joint Cover is an ideal Cover for Floor to Floor and Wall to Wall applications.

The Series is suitable for Interior and Exterior Areas where minimal Visible Sightline of the Profile is expected.

The components of the Z - 5001 cover are:

- Extruded Aluminium Recessed Support Profiles.
- Extruded Aluminium Centre Pan.
- Galvanised Steel Turnbar.

The Z - 5001 is a complete Aluminium Expansion Joint Cover Profile.

The Profile is a Heavy-Duty Pan Type System which can accommodate Multi-Directional/Seismic Movement while offering Minimum Profile Visibility.

The Central Pan of the Z - 5001 Cover provides space for Fixing Finishing Material in the Deep Recess thus providing Concealment of the Profile.

RECOMMENDED FOR

- Interior and Exterior Areas where thermal and Multi-Directional/Seismic Movement is expected
- Areas where Aesthetic plays an important role
- Hospitality, Retail, Commercial and similar applications

TECHNICAL DATA

Support Profiles & Centre Pan

The Aluminium profiles are extruded using one of the multiple Aluminium alloys and tempers.

The selection of the Aluminium grade depends on the use case of the profile.

Aluminium grade AA 6063 is the preferred choice for most profiles.

Turnbar

Material - Galvanised Steel.

Finish - "A" Coating (Corrosion protection).

Optional: Vapour Barrier

Material	Ethylene Propylene Diene Monomer
Color	Black
Tensile Strength	1431 psi - ASTM D 412
Tear Resistance (lbf/in.)	204 - ASTM D 624
Puncture Resistance (lbf)	60 at 4.49" - ASTM E 154



Z-5001 AND ZK-5001 POP UP SEISMIC FLOOR EXPANSION JOINT COVERS

STORAGE & HANDLING

ALUMINIUM

- **Transportation**

Aluminium can be damaged during transport and constitutes in the form of scratches and wear marks that can lead to subsequent interfacial corrosion. Such damage prevents satisfactory surface treatment of the profiles.

The appearance of Aluminium is affected by minor transportation damages to the surface of the material but mechanical properties of the metal, however, remain unaffected.

To prevent such damage to the material, it is important for the Aluminium profiles to be packaged in strong paper, plastic or bubble wrap during any moving and transportation to prevent individual profile surfaces from bumping against each other thus causing scratches.

- **Storage**

It is important to note that Aluminium gets easily affected by water and moisture.

Aluminium alloys with higher magnesium content are sensitive to water and condensation, whereas purer alloys have greater resistance to the same.

Moisture damage to Aluminium appears as white patches/ spots or dark discolouration marks and can be observed in the event if water or condensation is trapped between Aluminium profile stacked upon or lying very close to each other.

SUBSTRATE REQUIREMENT & PREPARATION

- The surface must have enough clearance from the reinforcement to provide enough space for the anchor
- The surface must be level to avoid gaps
- The gap must be uniform and in a straight line

INSTALLATION

Kindly refer to the detailed GENOTEK installation instructions or contact your nearest GENOTEK Technical Centre for the same.

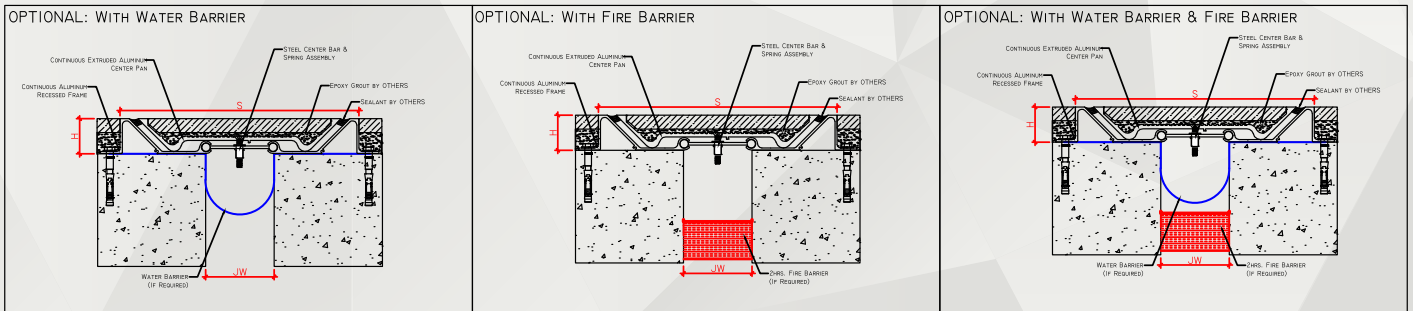
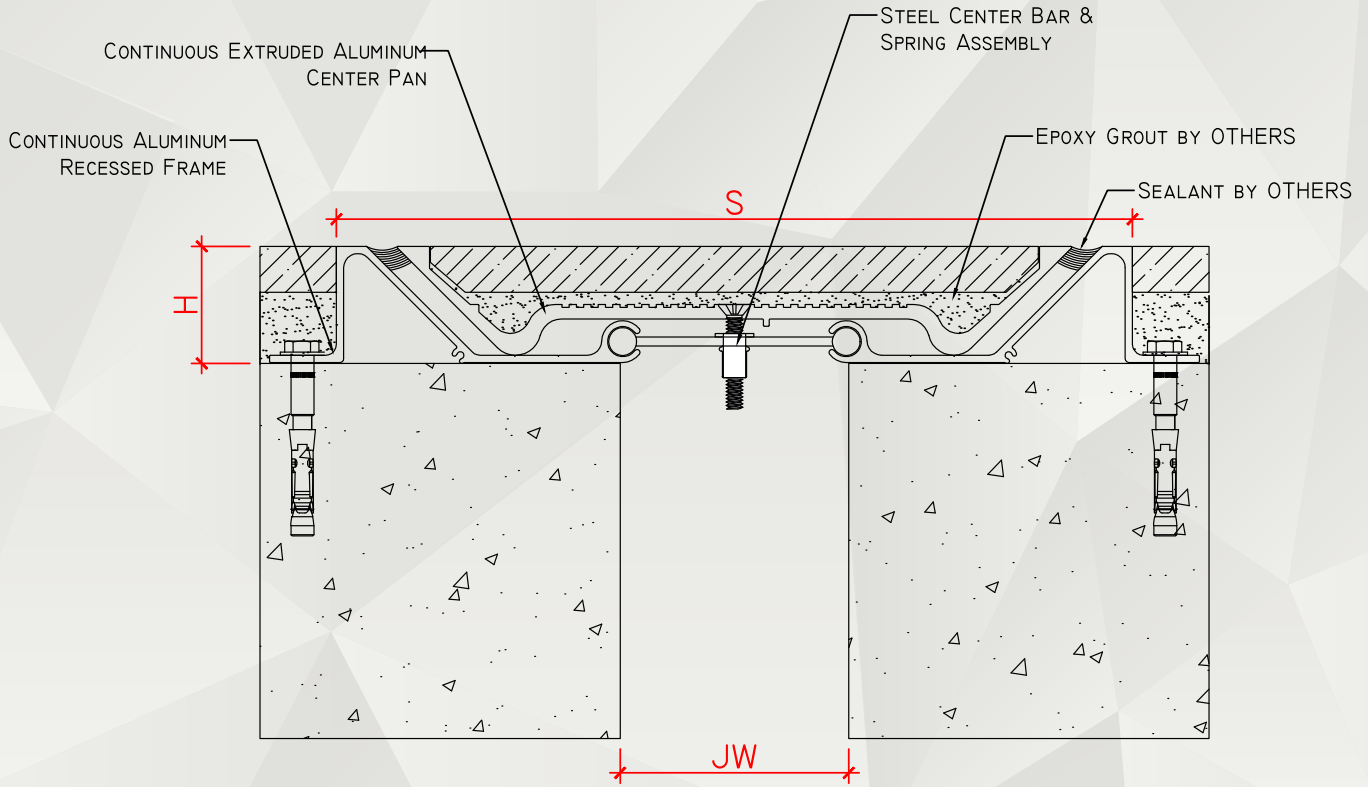
PACKAGING

- Aluminium Support Profile & Centre Pan: Standard Supply Length of 3.00 LM per piece.
- Moisture Barrier: Variable Length as per requirement.
- Accessories: Original Manufacturer Packing.



GENOTEK

Z-5001 AND ZK-5001 POP UP SEISMIC FLOOR EXPANSION JOINT COVERS

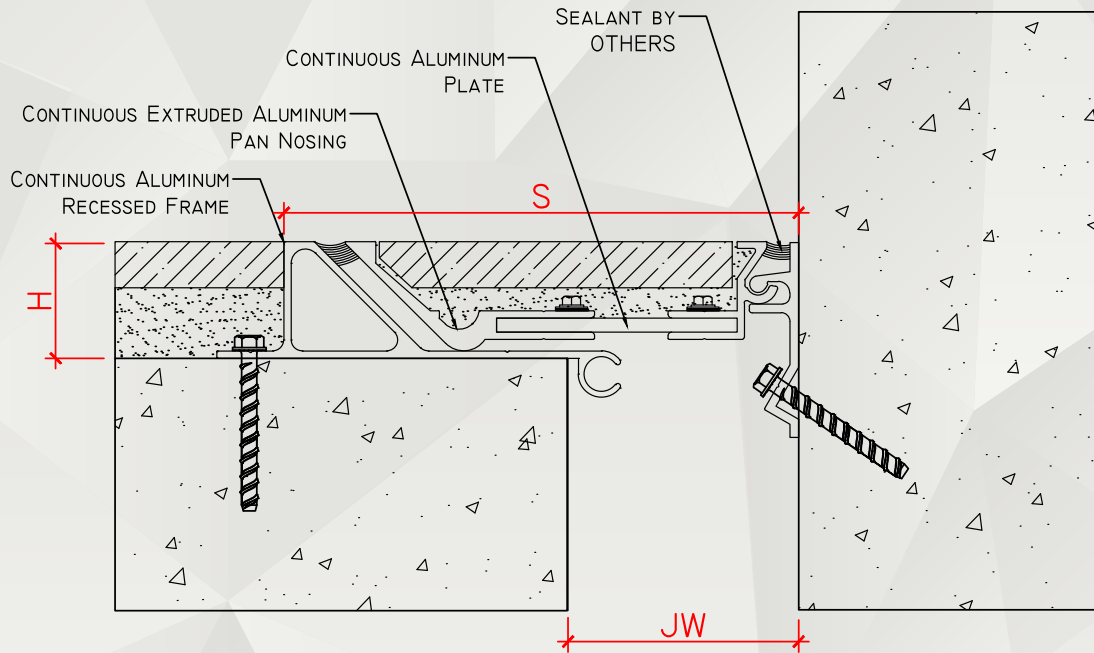


<input checked="" type="checkbox"/>	SKU	NAME	JOINT WIDTH, JW (MM)	HEIGHT, H (MM)	SIGHTLINE, S (MM)	MOVEMENT CAPACITY %	LOAD CAPACITY (KN)
<input type="checkbox"/>	Z5001I0050348	Z-5001-I00	50-110	50	348	±50	20
<input type="checkbox"/>	Z5001I5050406	Z-5001-I50	120-160	50	406	±50	10

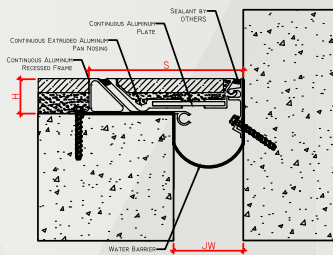
NOTE: 1. THE ABOVE DRAWINGS ARE FOR ILLUSTRATION ONLY, PLEASE SEE THE SYSTEM DRAWING OF THE PROFILE FOR THE SECTION DETAILS AS SPECIFICATION MAY VARY.
2. THE ABOVE SIZES ARE FOR REFERENCE, ADDITIONAL SIZES MAY BE AVAILABLE AND / OR CUSTOMIZED. KINDLY CONTACT GENOTEK TECHNICAL SUPPORT FOR MORE INFORMATION.



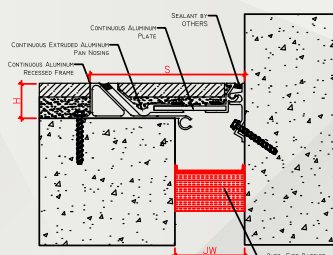
Z-5001 AND ZK-5001 POP UP SEISMIC FLOOR EXPANSION JOINT COVERS



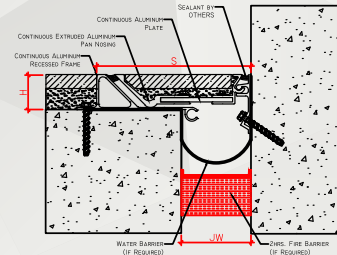
OPTIONAL: WITH WATER BARRIER



OPTIONAL: WITH FIRE BARRIER



OPTIONAL: WITH WATER BARRIER & FIRE BARRIER



<input checked="" type="checkbox"/>	SKU	NAME	JOINT WIDTH, JW (MM)	HEIGHT, H (MM)	SIGHTLINE, S (MM)	MOVEMENT CAPACITY %	LOAD CAPACITY (KN)
<input type="checkbox"/>	ZK5001I0050226	ZK-5001-100	50-110	50	226	±50	20
<input type="checkbox"/>	ZK5001I5050278	ZK-5001-150	120-160	50	278	±50	10

NOTE: 1. THE ABOVE DRAWINGS ARE FOR ILLUSTRATION ONLY, PLEASE SEE THE SYSTEM DRAWING OF THE PROFILE FOR THE SECTION DETAILS AS SPECIFICATION MAY VARY.

2. THE ABOVE SIZES ARE FOR REFERENCE, ADDITIONAL SIZES MAY BE AVAILABLE AND / OR CUSTOMIZED. KINDLY CONTACT GENOTEK TECHNICAL SUPPORT FOR MORE INFORMATION.