

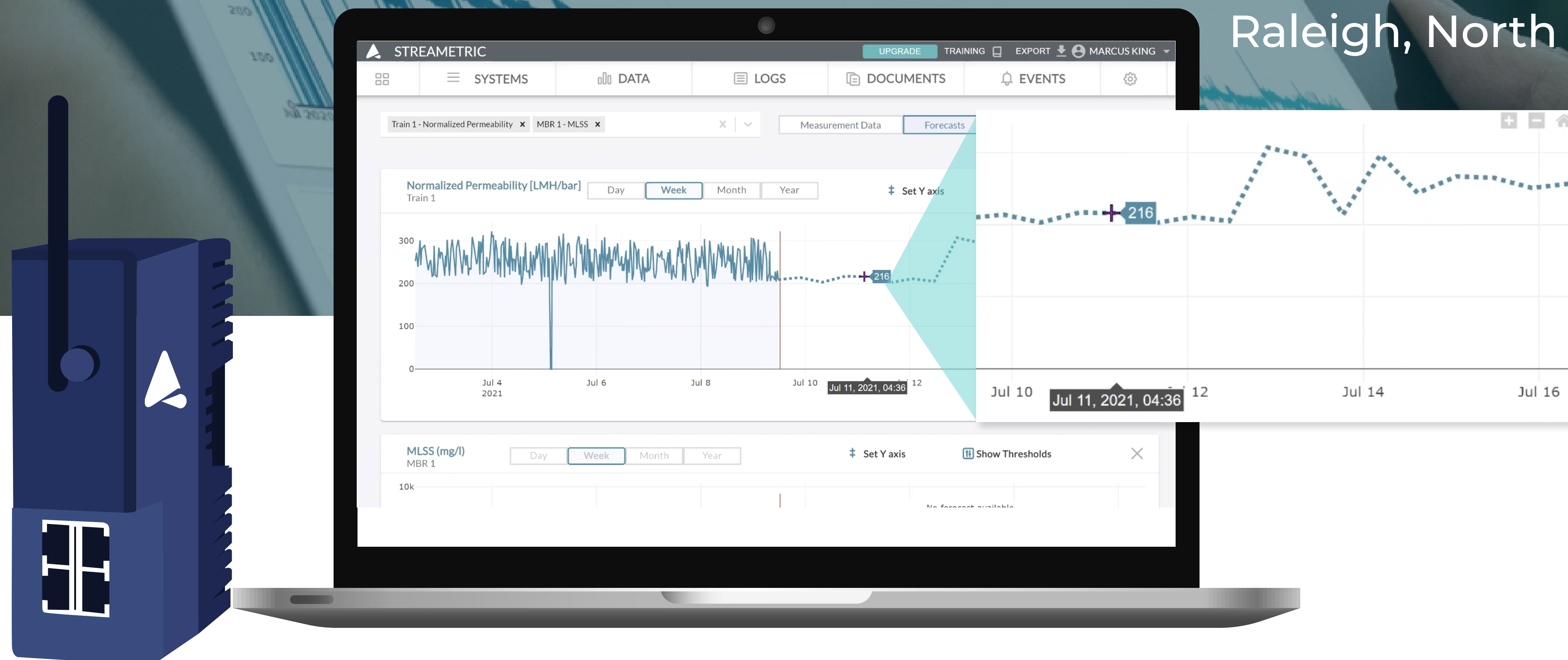


STREAMETRIC

www.streametric.io

+1 919-920-8186
info@streametric.io

North Carolina Office
1053 E Whitaker Mill Rd #155,
Raleigh, North Carolina 27604



Predictive Analytics for Everything that Streams

Remote monitoring, data management, and predictive maintenance software to maximize your filtration system performance and asset health.

Modern water and wastewater treatment plants generate an abundance of data. STREAMETRIC's advanced online monitoring platform helps [operators, system integrators, and manufacturers](#) leverage this data to drive improvements.

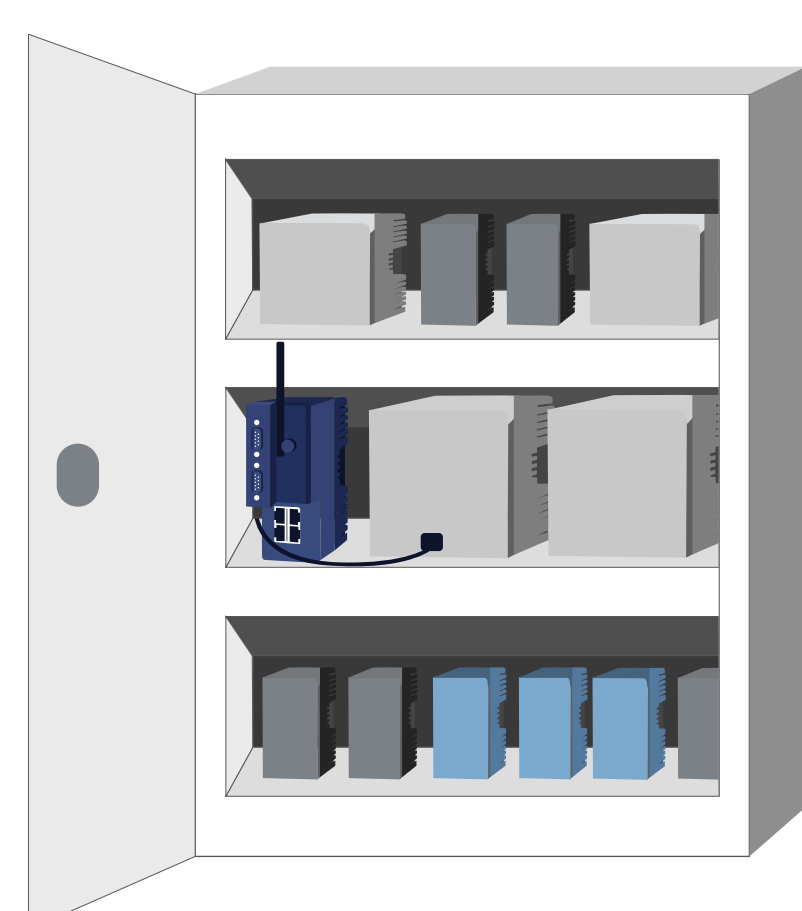
With STREAMETRIC, users can access relevant information and analytics in an easy-to-use web portal with just a few clicks. The STREAMETRIC cloud is [secure and scalable](#), ideal for versatile use whether processing large or small amounts of data.

Secure, Remote Access

Optimize Your Cleaning

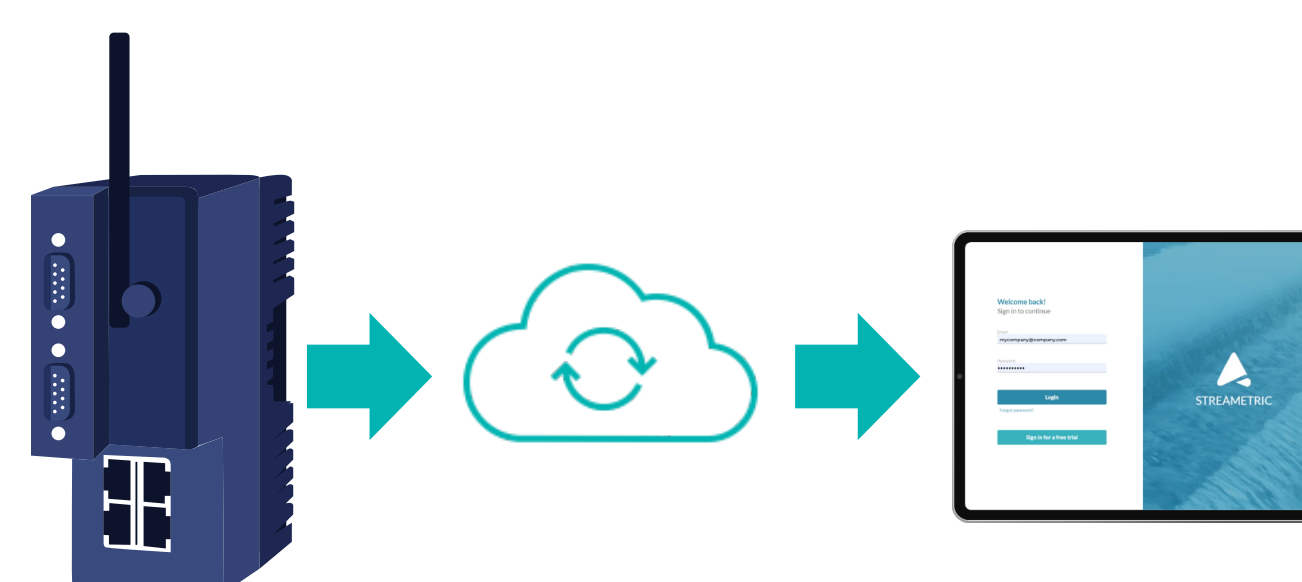
Online & Offline Logs

Easy Installation & Configuration



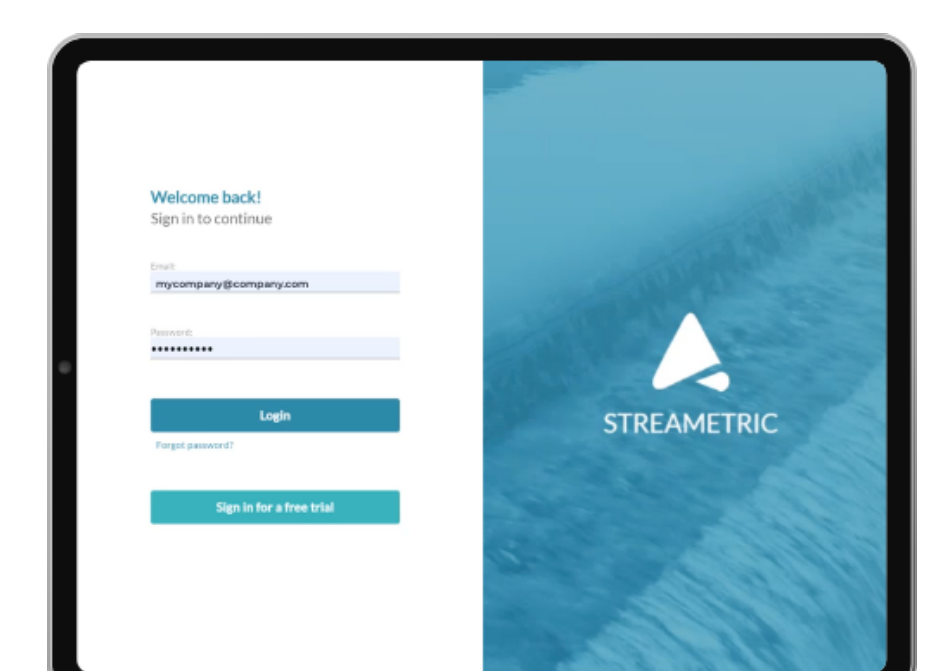
1. Install

Easy onsite (or remote) installation includes connecting the power, LAN and internet (ethernet/cable, Wi-Fi, etc.)



2. Configure

Based on your tag list provided by your team, we establish the PLC and cloud connection for the gateway fully remotely.



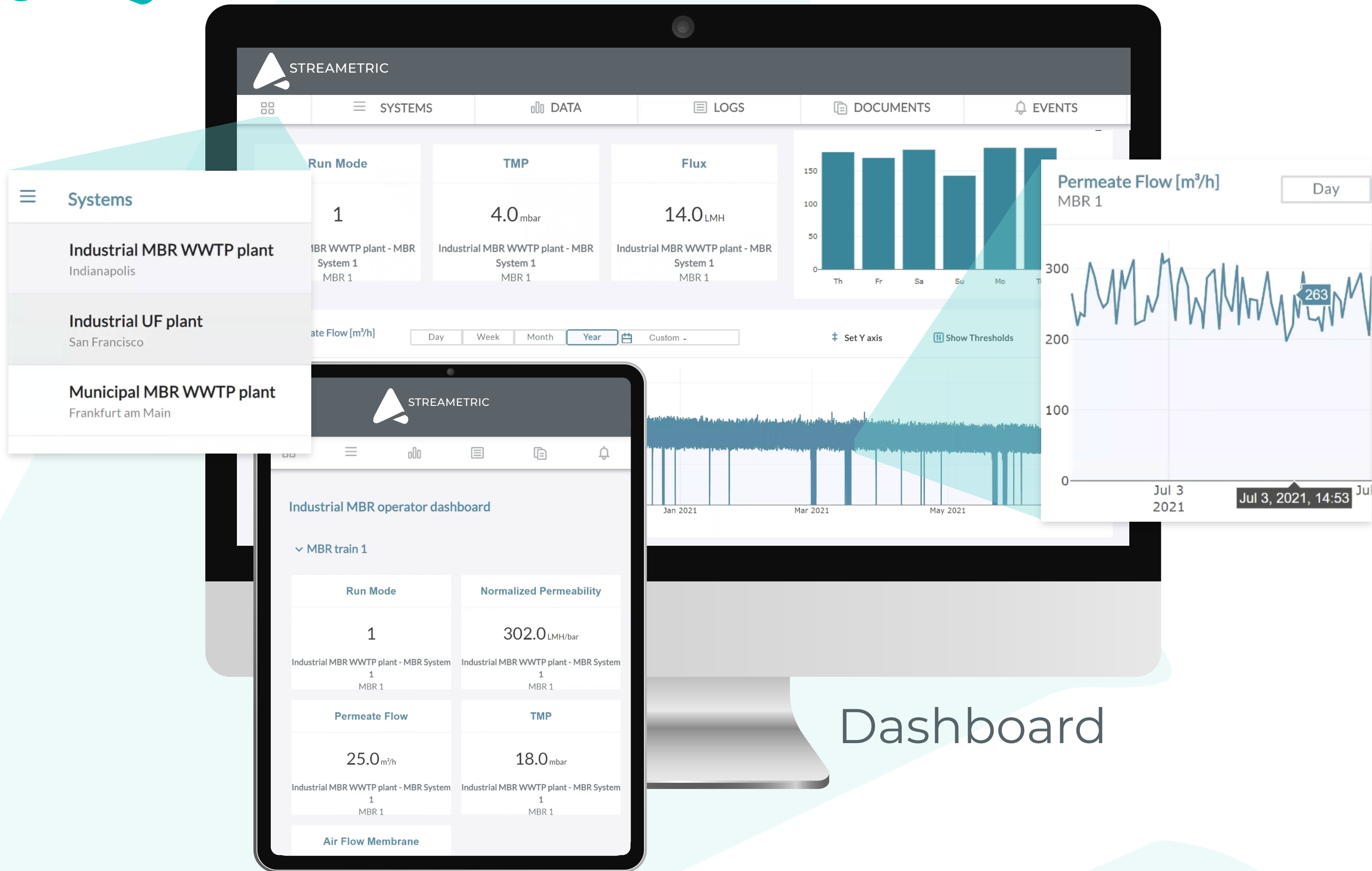
3. Login

Login to your portal, and immediately begin discovering, predicting and improving the entire system.

Not ready to buy?

Try our free demo!

[Go online for details.](#)



Customizable Dashboard

Each team member can enjoy personalized dashboards, with multiple views. Access dashboards from anywhere on any device, saving hundreds of hours pulling together reports.

- ✓ Combine data from multiple plants
- ✓ See reports across time and locations
- ✓ Share personalized dashboard with team
- ✓ Quick view of KPIs, trends and asset status
- ✓ View flow summaries

Data Trending

With data trending, you can combine many types of data, synchronize it and switch views seamlessly from seconds to days, weeks and even years. You can now view the correlation between multiple features (such as permeability and TMP) to improve the health and life cycle of your assets.

- ✓ Monitor process details and long-term trends
- ✓ Compare historical and forecasting data
- ✓ Synchronize data points (offline and online)

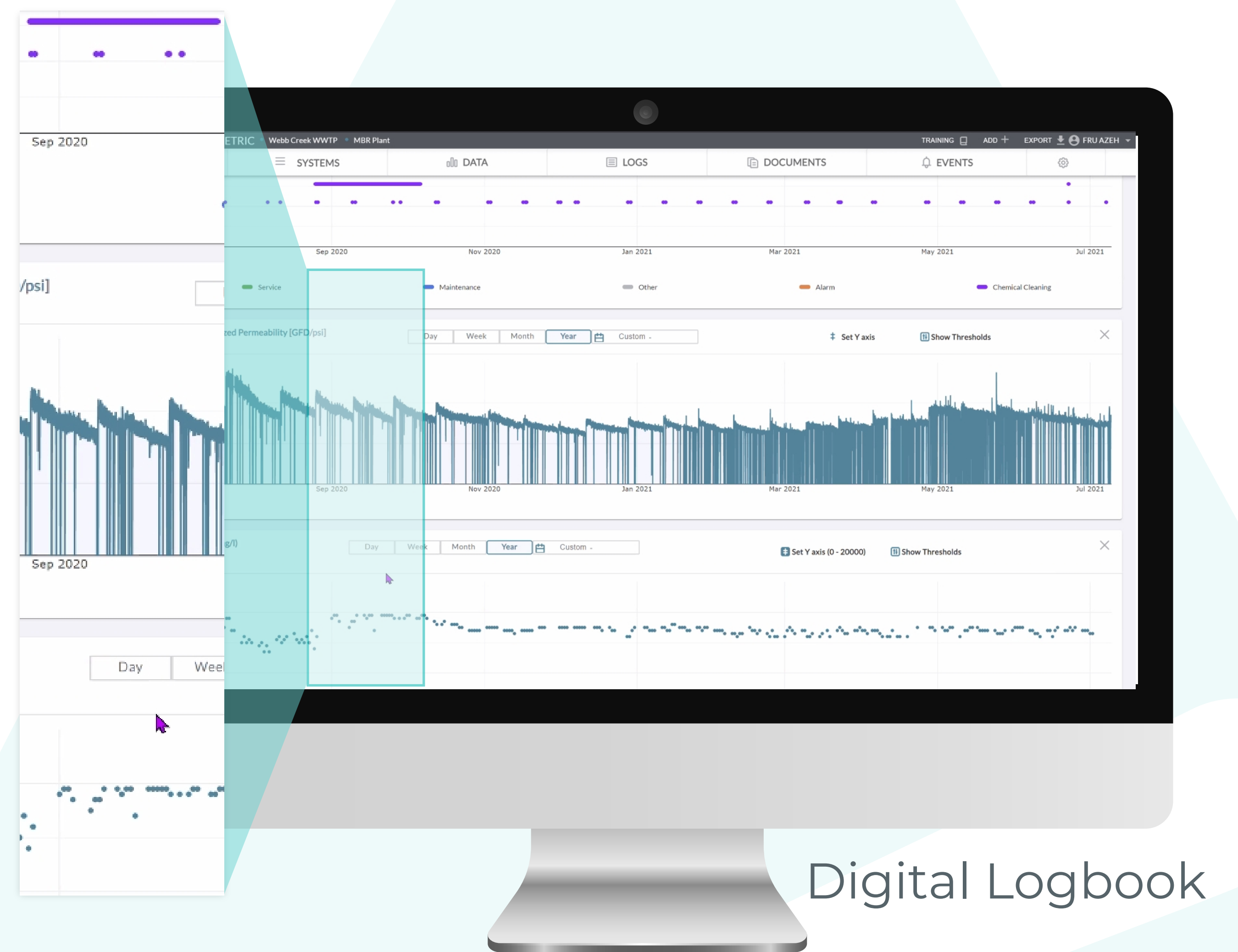
Digital Logbook

Our digital logbook allows teams to capture all data (both offline and online) in one place. This enables managers to see all historical data, including events, labs, testing, and other records, and saves hundreds of hours of manual writing and adding data to Excel.

Forecasting

Our machine learning models are fully customized for your system, allowing you to build proactive cleaning schedules, predict peak flow impact (based on weather forecasts), get predictive warnings, and improve asset health and maintenance.

- ✓ Predictions up to 7 days with 90% accuracy
- ✓ Customized for individual plant conditions
- ✓ On-going machine learning
- ✓ Create limits and receive predictive warnings



Membrane Analytics

Our AI-based solution is self-learning and begins to set and detect limits and anomalies for individual operating conditions over time. This extends the life and performance of each membrane.

- ✓ Simply access to membrane health
- ✓ Detect increased fouling or dewatering
- ✓ Track when cleanings are required

