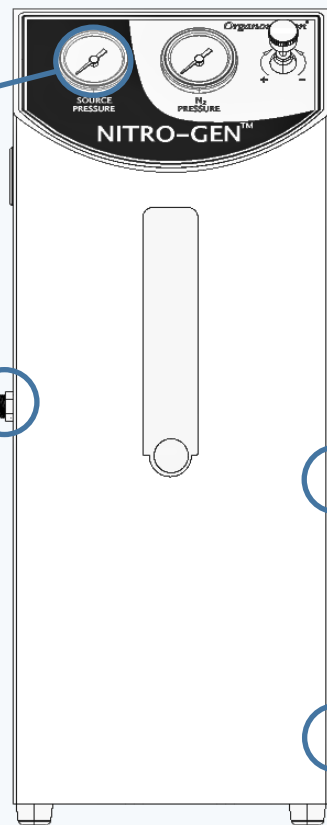


1 Connections



a

INPUT, SOURCE

MAX PRESSURE:
150 psi
(10.3 bar)

SOURCE PRESSURE

b

INPUT, AIR

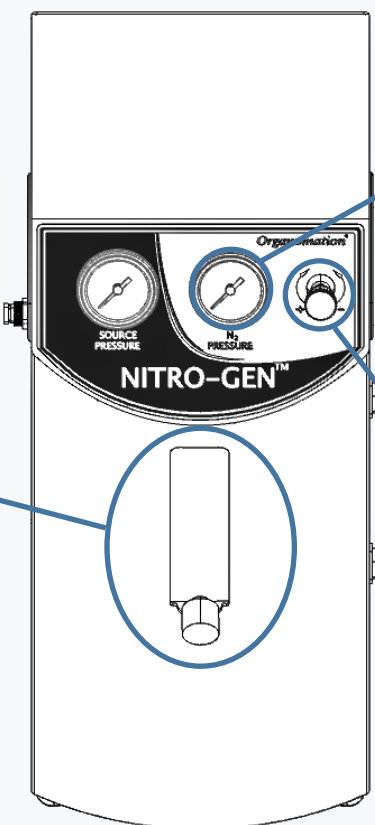
c

OUTPUT, N₂

d

DRAIN (AUTOMATIC)

2 Controls



e

OUTPUT, Flow Controller

Range:
0 - 20 LPM
(0 - 0.7 CFM)

MAX

f

OUTPUT, N₂ Pressure

MAX PRESSURE:
100 psi
(6.9 bar)

N₂ PRESSURE

g

OUTPUT, Pressure Regulator

+

-

3

Instructions for Use

1.

a. Identify desired **NITROGEN PURITY**

b. Confirm **FLOW RATES** are in suitable range

* **LPM (CFM)**

Inlet Pressure	Nitrogen Purity (%)				
	99	98	97	96	95
4 bar g (58 psi g)	2.5 (0.09)	4.5 (0.16)	6.5 (0.23)	8.3 (0.29)	10.3 (0.36)
5 bar g (72.5 psi g)	3.2 (0.11)	5.7 (0.2)	8.0 (0.28)	10.3 (0.36)	13.0 (0.46)
6 bar g (87 psi g)	4.2 (0.15)	7.5 (0.26)	10.3 (0.36)	13.3 (0.47)	16.3 (0.58)
7 bar g (101.5 psi g)	4.8 (0.17)	8.7 (0.31)	12.2 (0.43)	15.5 (0.55)	19.0 (0.67)
8 bar g (116 psi g)	5.5 (0.19)	10.0 (0.35)	13.8 (0.49)	17.7 (0.62)	21.8 (0.77)
9 bar g (130.5 psi g)	6.5 (0.23)	11.7 (0.41)	15.8 (0.56)	20.5 (0.72)	25.3 (0.89)
10 bar g (145 psi g)	6.8 (0.24)	12.5 (0.44)	17.3 (0.61)	22.2 (0.78)	27.3 (0.97)

a

b

2.

c. Set **SOURCE PRESSURE** to meet required output

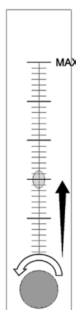


Inlet Pressure	Nitrogen Purity (%)				
	99	98	97	96	95
4 bar g (58 psi g)	2.5 (0.09)	4.5 (0.16)	6.5 (0.23)	8.3 (0.29)	10.3 (0.36)
5 bar g (72.5 psi g)	3.2 (0.11)	5.7 (0.2)	8.0 (0.28)	10.3 (0.36)	13.0 (0.46)
6 bar g (87 psi g)	4.2 (0.15)	7.5 (0.26)	10.3 (0.36)	13.3 (0.47)	16.3 (0.58)
7 bar g (101.5 psi g)	4.8 (0.17)	8.7 (0.31)	12.2 (0.43)	15.5 (0.55)	19.0 (0.67)
8 bar g (116 psi g)	5.5 (0.19)	10.0 (0.35)	13.8 (0.49)	17.7 (0.62)	21.8 (0.77)
9 bar g (130.5 psi g)	6.5 (0.23)	11.7 (0.41)	15.8 (0.56)	20.5 (0.72)	25.3 (0.89)
10 bar g (145 psi g)	6.8 (0.24)	12.5 (0.44)	17.3 (0.61)	22.2 (0.78)	27.3 (0.97)

c

3.

d. Set **FLOW RATE** meet required **PURITY** output



Ex.
98% N₂ Purity
 =
101.5 psig @
8.7 LPM

Inlet Pressure	Nitrogen Purity (%)				
	99	98	97	96	95
4 bar g (58 psi g)	2.5 (0.09)	4.5 (0.16)	6.5 (0.23)	8.3 (0.29)	10.3 (0.36)
5 bar g (72.5 psi g)	3.2 (0.11)	5.7 (0.2)	8.0 (0.28)	10.3 (0.36)	13.0 (0.46)
6 bar g (87 psi g)	4.2 (0.15)	7.5 (0.26)	10.3 (0.36)	13.3 (0.47)	16.3 (0.58)
7 bar g (101.5 psi g)	4.8 (0.17)	8.7 (0.31)	12.2 (0.43)	15.5 (0.55)	19.0 (0.67)
8 bar g (116 psi g)	5.5 (0.19)	10.0 (0.35)	13.8 (0.49)	17.7 (0.62)	21.8 (0.77)
9 bar g (130.5 psi g)	6.5 (0.23)	11.7 (0.41)	15.8 (0.56)	20.5 (0.72)	25.3 (0.89)
10 bar g (145 psi g)	6.8 (0.24)	12.5 (0.44)	17.3 (0.61)	22.2 (0.78)	27.3 (0.97)

d

Wall Mounting Fixture Template
Scale 1:1

4

