

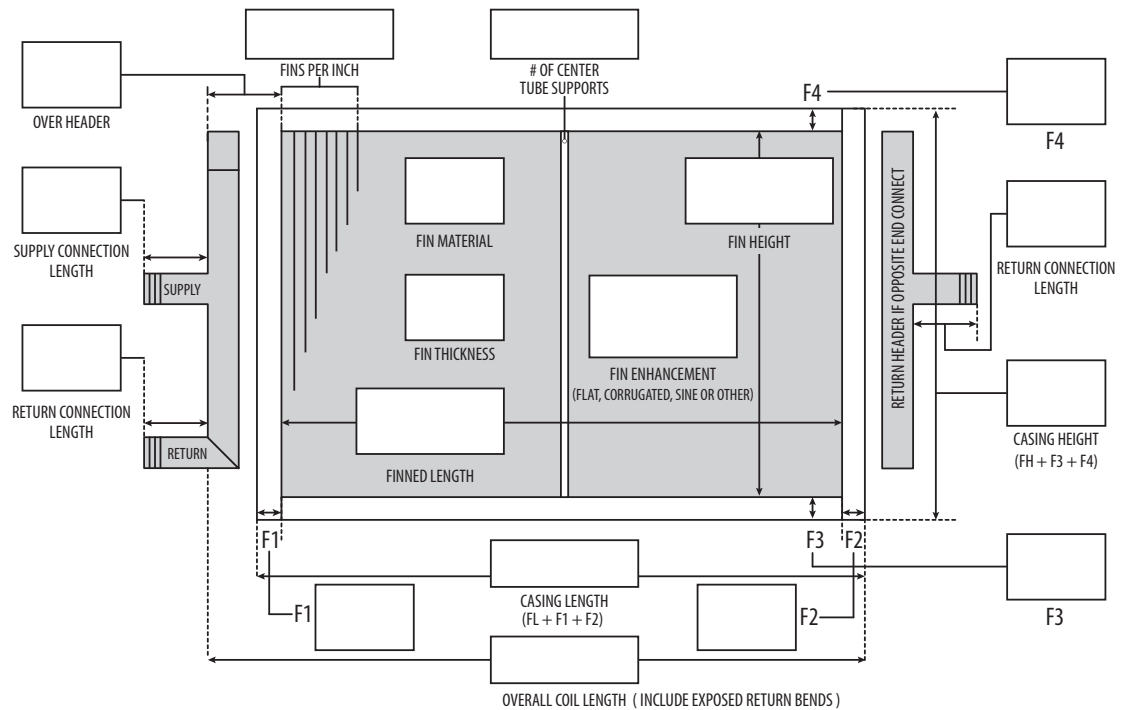
STEAM DISTRIBUTING COILS

PLEASE FILL IN AS MUCH INFORMATION BELOW AS POSSIBLE AND EMAIL OR FAX TO A SRC FACILITY. THANK YOU.

PLEASE PROVIDE COIL CIRCUITING INFORMATION - [CLICK HERE](#) FOR CIRCUITING PDF.

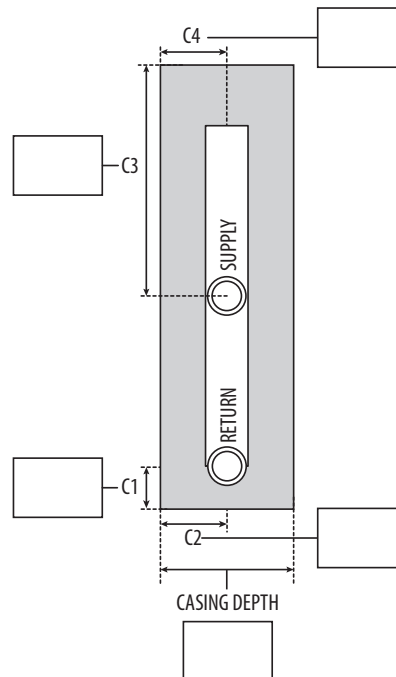
<input type="text"/>	<input type="text"/>
TUBE O.D.	TUBE MATERIAL
<input type="text"/>	<input type="text"/>
TUBE WALL	TUBES IN FACE
<input type="text"/>	<input type="text"/>
ROWS DEEP	<input type="text"/>

<input type="text"/>	<input type="text"/>	<input type="text"/>
HEADER MATERIAL	OUTER / INNER HEADER SIZE	
<input type="text"/>	<input type="text"/>	<input type="text"/>
SUPPLY CONNECT SIZE	RETURN CONNECT SIZE	
<input type="text"/>	<input type="text"/>	<input type="text"/>
SUPPLY CONNECT TYPE	RETURN CONNECT TYPE	



NOTE: INNER HEADERS MUST BE GREATER THAN SUPPLY CONNECTION SIZE. OUTER/RETURN HEADER MUST BE GREATER THAN INNER HEADER

<input type="text"/>
CASING MATERIAL
<input type="text"/>
CASING THICKNESS
<input type="text"/>
AIRFLOW: H/V



C4 + C2 MUST BE THE SAME IF PIPE HEADERS ARE USED. IF CONNECTIONS ARE OFFSET, USE BOX HEADERS

***Steam Distributing Coil** (a.k.a Non-Freeze), an inner tube; minimizes condensate freeze up. Used for applications where entering air temperature is below 32° F. Provides even air temperature on long coil lengths when steam is modulated, and /or supply and return connections must be on the same end of coil.

WEST COAST - Phoenix, AZ
 Fax: (602) 257-9175
 azinfo@superradiatorcoils.com

CENTRAL - Chaska, MN
 Fax: (952) 556-3331
 mninfo@superradiatorcoils.com

EAST COAST - Richmond, VA
 Fax: (804) 794-7437
 vainfo@superradiatorcoils.com

