

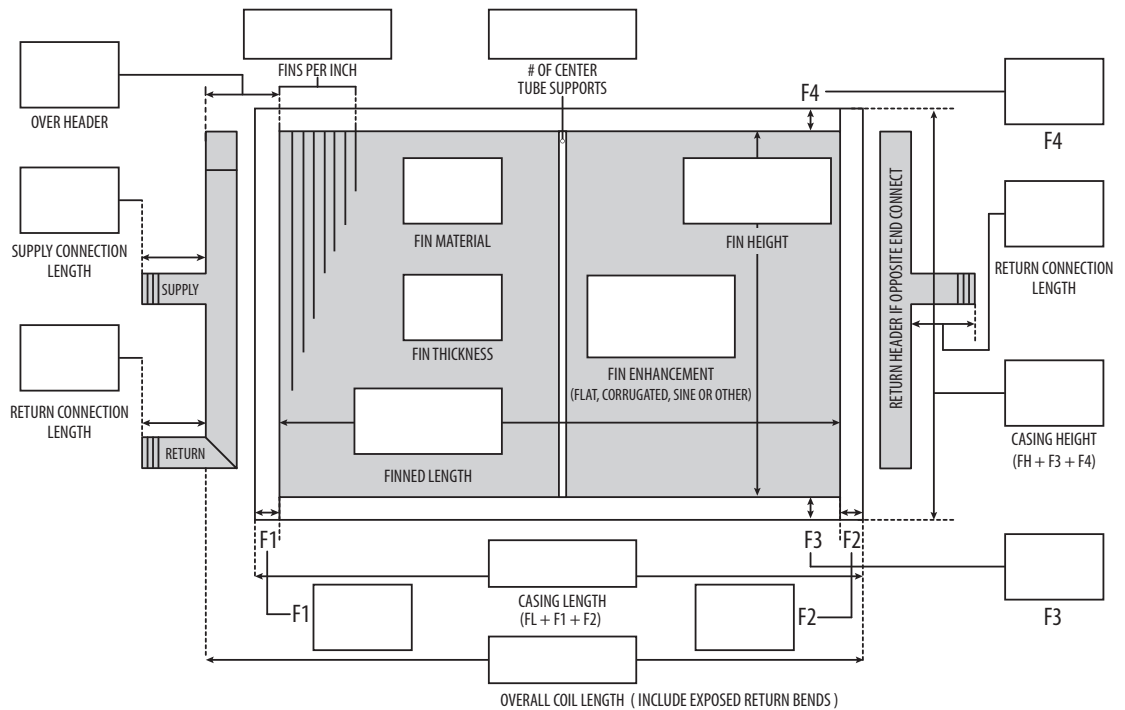
# STEAM DISTRIBUTING COILS

PLEASE FILL IN AS MUCH INFORMATION BELOW AS POSSIBLE AND EMAIL OR FAX TO A SRC FACILITY. THANK YOU.

**PLEASE PROVIDE COIL CIRCUITING INFORMATION - CLICK [HERE](#) FOR CIRCUITING PDF.**

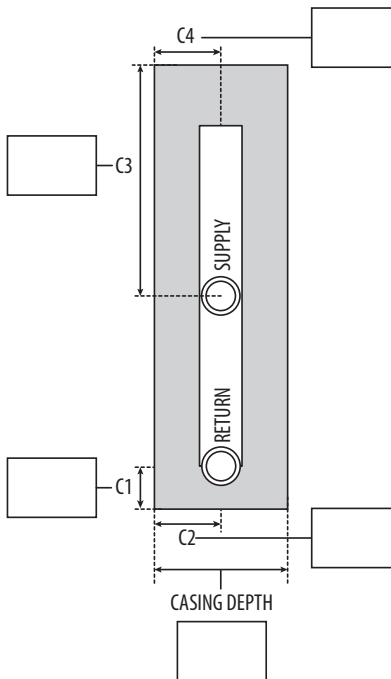
TUBE O.D.	TUBE MATERIAL
TUBE WALL	TUBES IN FACE
ROWS DEEP	

HEADER MATERIAL	OUTER / INNER HEADER SIZE	
SUPPLY CONNECT SIZE	RETURN CONNECT SIZE	
SUPPLY CONNECT TYPE	RETURN CONNECT TYPE	



**NOTE:** INNER HEADERS MUST BE GREATER THAN SUPPLY CONNECTION SIZE. OUTER/RETURN HEADER MUST BE GREATER THAN INNER HEADER

CASING MATERIAL
CASING THICKNESS
AIRFLOW: H/V



**C4 + C2 MUST BE THE SAME IF PIPE HEADERS ARE USED. IF CONNECTIONS ARE OFFSET, USE BOX HEADERS**

\***Steam Distributing Coil** (a.k.a Non-Freeze), an inner tube; minimizes condensate freeze up. Used for applications where entering air temperature is below 32° F. Provides even air temperature on long coil lengths when steam is modulated, and /or supply and return connections must be on the same end of coil.

**WEST COAST** - Phoenix, AZ  
Fax: (602) 257-9175

**CENTRAL** - Chaska, MN  
Fax: (952) 556-3331

**EAST COAST** - Richmond, VA  
Fax: (804) 794-7437

