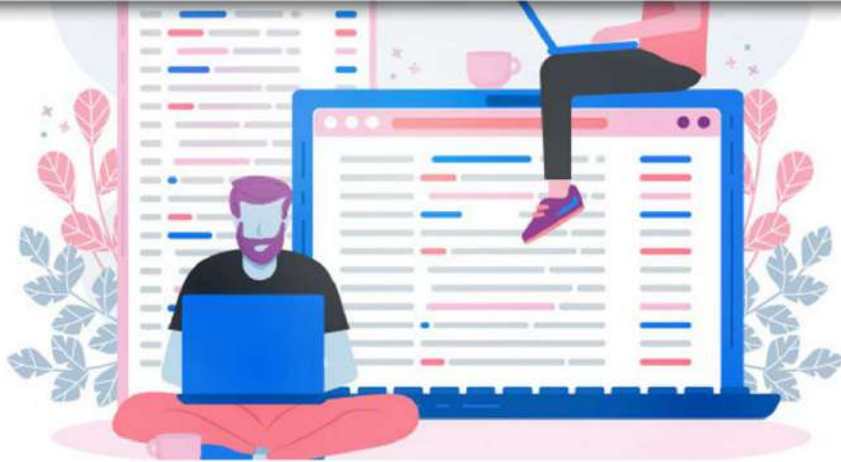




Ruby Performance Monitoring

Secure Cloud Services for your online business since 1999.
.Reliable .Secure .Speed .Scalable .Manageable .Compliant



Gain deeper visibility into all your gems.

Catch errors, track performance, monitor hosts, detect anomalies – all in one tool.

Features



Memory Bloat Detection



N+1 Detection



Identify performance bottlenecks and drill down to the offending code.



Restarts, crashes, deployment changes



Apdex score & Network traffic, TCP requests & retransmissions



Logs & Request tracing



Applications exceptions & dependencies

Benefits



End user to database perspective monitoring.



Check for database performance slowdown.



Isolate slow invocations in your Ruby code.



Summarize database operations.



Monitor Multiple Resources in One View



SMS/E-mail Notifications

Ask For Free 15 day Trail <https://www.xcellhost.cloud/rubymonitoring>

Key Components



Datastores



Rack frameworks



Rails libraries



HTTPClient and
Net::HTTP



Background Processing Sidekiq,
DelayedJob, Resque, Sneakers & Shoryuken

Dashboard

