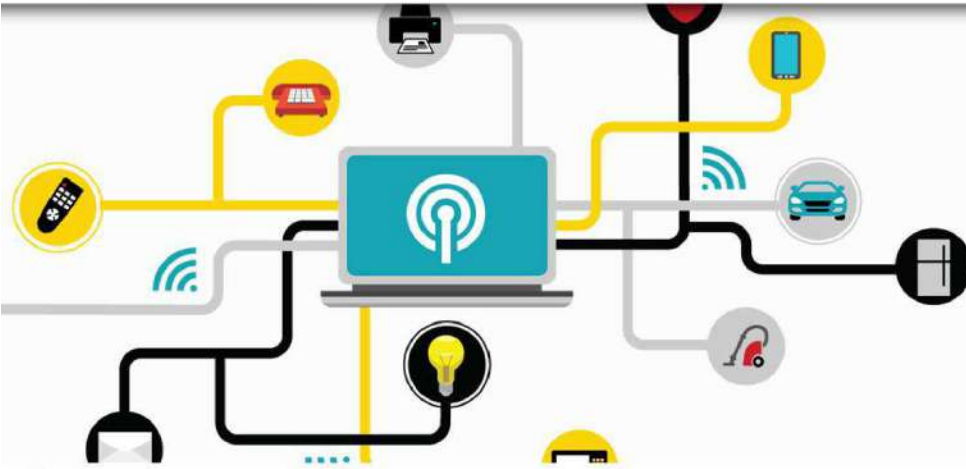




IOT Monitoring

Secure Cloud Services for your online business since 1999.
.Reliable .Secure .Speed .Scalable .Manageable .Compliant



Real-time visibility, diagnostics & analytics for IoT applications connecting any number of devices
Get end-to-end monitoring across connected IoT ecosystems of devices, APIs, gateways, apps, networks & infrastructures.

Features



Data Collection



Data Analytics



Device Management



Information Security



Command & Control



Use AI for reliable IoT performance.



Everything connected, interrelated so as to increase citizen participation

Benefits



Amalgamate information to stay nimble



Empower Predictive Maintenance



Improve Customer Experience



Unified Monitoring



Reduce MTRR



Gain Actionable Insights

Ask For Free 15 day Trail <https://www.xcellhost.cloud/iotmonitoring>

Dashboard View

- Problems
- User sessions
- Smartscape topology
- Reports
- CPU profiler (code-level)
- Monitor
- Web applications
- Mobile applications
- Web checks & availability
- Transactions & services
- Databases
- Hosts
- Network
- Technologies
- VMware
- AWS
- OpenStack
- Docker
- Manage
- Deploy Dynatrace
- Deployment status
- Settings
- Devops

www.easytravel.com

> Properties, tags, and JavaScript frameworks

Filter geolocations, user types, and returning or new users

Performance ana...

Actions /min, Action duration, Appdex rating, JavaScript errors, 3rd party providers and Services.

User behavior

Active sessions, Actions per session, Entry/Exit actions, Bounce rate, and Conversion goals.

Active sessions

Watch the activity trend of your users. At which time are the most sessions and when are users starting to use the application.

21 Problems in last 72 hours watched

Top conversion goals

See the conversion rate of your defined goals.

Supported Devices :

