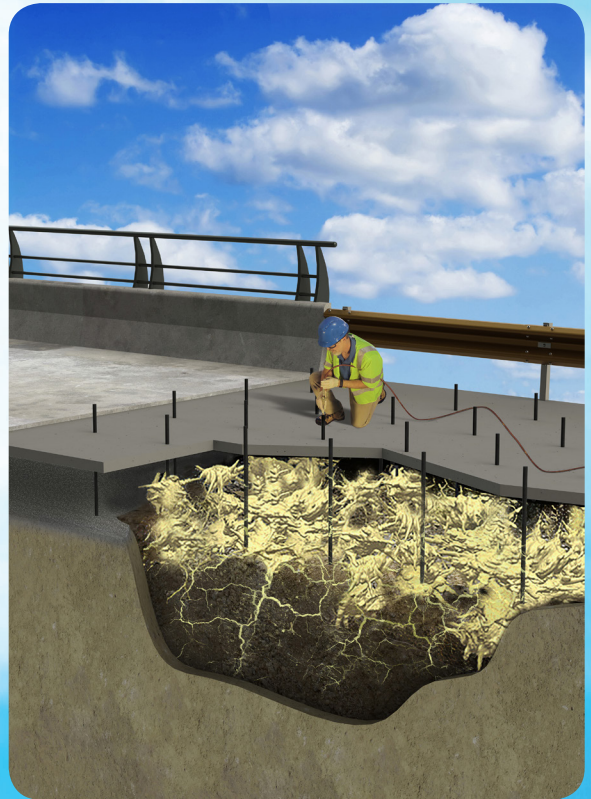
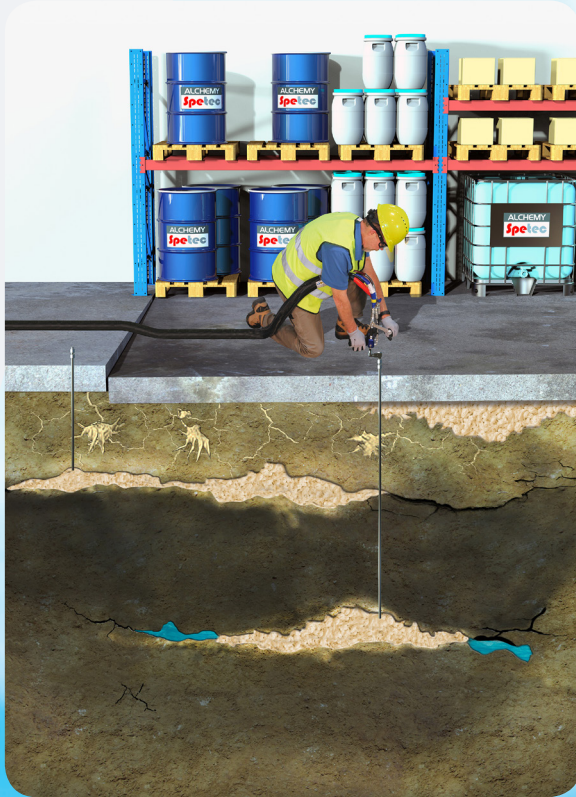




GEOTECHNICAL PRODUCT CATALOG



POWERFUL POLYMERS
PAINLESS PROCEDURES
RAPID RESULTS



www.Alchemy-Spetec.com

OVER 30 YEARS OF EXPERIENCE

For more than 30 years, the key partners in Alchemy-Spetec have been developing and manufacturing polyurethane injection resins.

Alchemy-Spetec offers high-quality products for civil engineering to stabilize soil, seal leaks, and lift concrete slabs. Our products are mainly used in tunnels, mining, metro systems, excavations, dams, ground barriers and foundations.

Alchemy-Spetec resins have been used in numerous projects all over the world.

Our dedicated team of well experienced engineers and technicians make sure that we offer the right solutions for your problems.

A worldwide standard in grouting.



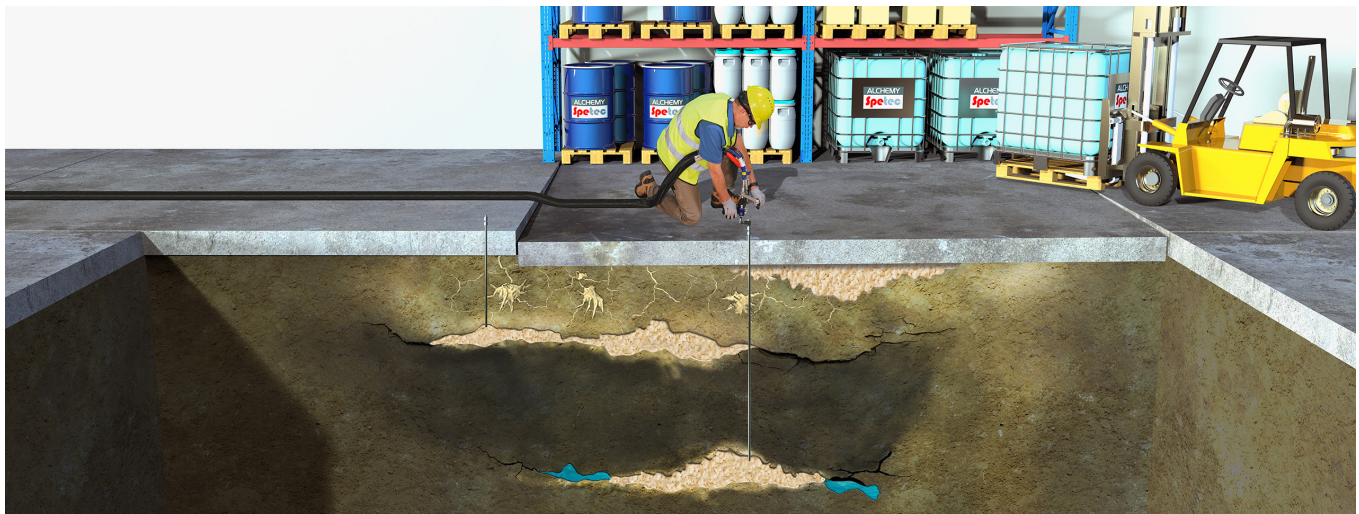
Tech Support:
404-618-0438

Alchemy-Spetec
4508 Bibb Blvd, Suite B5
Tucker, GA 30084
www.Alchemy-Spetec.com



Geotech Product Application Matrix

	AP Soil 600	AP Fill 700	AP Fill 420	AP Deep Lift 420	AP Lift 430	AP Lift 440	AP Lift 475	AP SoilGel 200	AP Microfine 10	AP Microfine 10 w/ AP SoilGel 200
Permeation grouting.	•							•	•	•
Stabilizing loose sand and soil.	•	•			•	•	•	•	•	•
Sinkhole remediation.	•					•	•			
Filling abandoned pipes, mine shafts, etc.			•	•		•				
Filling voids.		•	•	•	•	•	•			
Flotation foam.			•	•						
Lifting and jacking concrete slabs.					•	•	•			
Lifting from deep within the soil.				•						
Compaction / Fracture grouting.					•		•		•	
Concrete slab foundation repair.					•	•				
Cutting off underground water flows.		•						•		•



AP SOIL 600

1 Component Geotech

Moisture Activated Polyurethane Soil Stabilization Resin

AP SOIL 600 is a single component, moisture activated, hydrophobic, low viscosity, polyurethane soil grout.

Advantages

- One component - no catalyst required.
- Encapsulates and strengthens loose soil.
- Very low viscosity for good soil penetration.
- Watertight.
- Phthalate free (more environmentally friendly).
- *Certified to NSF 61-5 (Approved for contact with drinking water).*



Field of Application

- Permeation grouting.
- Stabilizing loose sand and soil.
- Sinkhole remediation.

Accessories

- AP Cat 106 Item #: 106-0.5 (1/2 Gallon), 106-5 (5 Gallon)
- AP Cat 600 Item #: 600-0.5 (1/2 Gallon)
- AP Flush 121 Item #: 121-0.5 (1/2 Gallon), 121-5 (5 Gallon)
- AP Soak 130 Item #: 130-1 (1 Gallon), 130-5 (5 Gallon)

Equipment

Single component electric injection pump recommended. See pages 17-18.

Packaging

- 5 Gallon Pails Item #: 600-5
- 50 Gallon Drums Item #: 600-50
- 250 Gallon Totes Item #: 600-250

AP FILL 700

1 Component Geotech

Water-Activated Semi-Rigid Polyurethane Foam Injection Resin

AP Fill 700 is a single component, water-activated, hydrophobic, low viscosity, closed cell polyurethane injection resin.

Advantages

- Very low viscosity.
- Water impermeable.
- Adjustable set time – as fast as 20 seconds.
- Injected as a single component.
- Phthalate free (more environmentally friendly).
- *Certified to NSF 61-5 (Approved for contact with drinking water).*



Field of Application

- Cutting off high flow leaks.
- Filling voids behind concrete structures.
- Cutting off underground water flows.
- Stabilizing soil.
- Seawall repair

Accessories

- AP Cat 106 Item #: 106-0.5 (1/2 Gallon), 106-5 (5 Gallon)
- AP Cat 107 Item #: 107-0.5 (1/2 Gallon), 107-5 (5 Gallon)
- AP Flush 121 Item #: 121-0.5 (1/2 Gallon), 121-5 (5 Gallon)

Equipment

Single component electric injection pump recommended. See pages 17-18.

Packaging

- 5 Gallon Pails Item #: 700-5
- 50 Gallon Drums Item #: 700-50
- 250 Gallon Totes Item #: 700-250

AP Microfine 10

1 Component Geotech

Microfine Cement

AP Microfine 10 is a blast furnace slag ultrafine cement intended for use in specialty grouting applications.

Advantages

- Excellent permeability.
- Environmentally friendly.
- Long-term durability.
- Highly adaptable.
- Brine tolerant.
- Highly predictable.

Field of Application

- Pre and post-excavation grouting.
- Water cut-off grouting.
- Dam and embankment grouting.
- Foundation stabilization, new and existing.
- Soil consolidation.
- Oil and gas well remediation.
- Hazardous waste containment grouting.
- Maintenance grouting of existing dams and tunnels.

Accessories

- Microfine 10 Plasticizer **Optional & Included, (6 Ounce Bottle)**

Packaging

- 44 lb. Plastic Pail **Item #: ACA-10**

AP FILL 420

2 Component Geotech

Two Component, Highly Expansive Polyurethane Foam

AP FILL 420 is a two component, high expansion, hydro insensitive polyurethane foam. Unconfined density is approximately 2 lbs/cubic foot (32 kg/cubic meter).

Advantages

- 90% of full strength in 15 minutes.
- High expansion rate of 35x.
- Works in wet environments - displaces water.
- Bonds with soil and concrete.
- Closed cell.

Field of Application

- Filling abandoned pipes, mine shafts, etc.
- Filling voids.
- Floatation foam

Accessories

- AP Flush 121 Item #: 121-0.5 (1/2 Gallon), 121-5 (5 Gallon)
- AP Flush 125 Item #: 121-5
- AP Soak 130 Item #: 130-1 (1 Gallon), 130-5 (5 Gallon)

Equipment

- Proportioning pump with heated lines. See pages 13-14.
- MixMaster Pro injection gun. See page 11.

Packaging

- 10 Gallon Unit Item #: 420-10
- 100 Gallon Unit Item #: 420-100
- 500 Gallon Unit Item #: 420-500

AP DEEP LIFT 420

2 Component Geotech

Two Component, Highly Expansive Polyurethane Foam

AP FILL 420 is a two component, high expansion, hydro insensitive polyurethane foam. Unconfined density is approximately 2 lbs/cubic foot (32 kg/cubic meter).

Advantages

- High expansion.
- Works in wet environments - displaces water.
- Bonds with soil and concrete.
- Closed cell.
- 90% of full strength in 15 minutes.

Field of Application

- Lifting structures from deep beneath the soil.
- Filling voids.
- Floatation foam

Accessories

- AP Flush 121 Item #: 121-0.5 (1/2 Gallon), 121-5 (5 Gallon)
- AP Flush 125 Item #: 121-5
- AP Soak 130 Item #: 130-1 (1 Gallon), 130-5 (5 Gallon)

Equipment

- Proportioning pump with heated lines. See pages 13-14.
- MixMaster Pro lifting gun. See page 11.

Packaging

- 10 Gallon Unit Item #: 420 Deep Lift-10
- 100 Gallon Unit Item #: 420 Deep Lift-100
- 500 Gallon Unit Item #: 420 Deep Lift-500
- 20.5oz (300ml x 300ml) Boom Seal Dual Cartridge Item #: Boom-Cart

AP LIFT 430

2 Component Geotech

Two Component, Structural Polyurethane Foam

AP LIFT 430 is a two component, high strength, high density, hydro insensitive structural polyurethane foam. Unconfined density is approximately 3 lbs/cubic foot (48 kg/cubic meter).

Advantages

- Traffic ready in 15 minutes.
- High strength.
- Works in wet environments - displaces water.
- Bonds with soil and concrete.
- Closed cell.
- *Certified to NSF/ANSI 61-5 (approved for contact with drinking water).*



Field of Application

- Filling abandoned pipes, mine shafts, etc.
- Lifting concrete slabs.
- Stabilizing soil.
- Filling abandoned pipes.
- Filling voids

Accessories

- AP Flush 121 Item #: 121-0.5 (1/2 Gallon), 121-5 (5 Gallon)
- AP Flush 125 Item #: 121-5
- AP Soak 130 Item #: 130-1 (1 Gallon), 130-5 (5 Gallon)

Equipment

- Proportioning pump with heated lines. See pages 13-14.
- MixMaster Pro injection gun. See page 11.

Packaging

- 10 Gallon Unit Item #: 430-10
- 100 Gallon Unit Item #: 430-100
- 500 Gallon Unit Item #: 430-500

AP LIFT 440

2 Component Geotech

Two Component, Structural Polyurethane Foam

AP Lift 440 is a two component, high strength, high density, hydro insensitive structural polyurethane foam. Unconfined density is approximately 4 lbs/cubic foot (64 kg/cubic meter).

Advantages

- High strength.
- Low viscosity.
- Works in wet environments - displaces water.
- Bonds with soil and concrete.
- Traffic ready in 15 minutes.
- Closed cell.

Field of Application

- Stabilizing soil.
- Lifting concrete slabs.
- Filling voids.
- Filling abandoned pipes.
- Supplemental sinkhole remediation.

Accessories

- AP Flush 121 Item #: 121-0.5 (1/2 Gallon), 121-5 (5 Gallon)
- AP Flush 125 Item #: 121-5
- AP Soak 130 Item #: 130-1 (1 Gallon), 130-5 (5 Gallon)

Equipment

- Proportioning pump with heated lines. See pages 13-14.
- MixMaster Pro injection gun. See page 11.

Packaging

- 10 Gallon Unit Item #: 440-10
- 100 Gallon Unit Item #: 440-100
- 500 Gallon Unit Item #: 440-500

AP LIFT 475

2 Component Geotech

Two Component, Structural Polyurethane Foam

AP LIFT 475 is a two component, high strength, high density, hydro insensitive structural polyurethane foam. Unconfined density is approximately 4.75 lbs/cubic foot (76 kg/cubic meter). Also available in a slow version.

Advantages

- High strength.
- Low viscosity.
- Works in wet environments - displaces water.
- Bonds with soil and concrete.
- Traffic ready in 15 minutes.
- Closed cell.
- *Certified to NSF 61-5 (Approved for contact with drinking water).*



Field of Application

- Stabilizing soil.
- Lifting concrete slabs.
- Filling voids.
- Supplemental sinkhole remediation.

Accessories

- AP Flush 121 Item #: 121-0.5 (1/2 Gallon), 121-5 (5 Gallon)
- AP Flush 125 Item #: 121-5
- AP Soak 130 Item #: 130-1 (1 Gallon), 130-5 (5 Gallon)

Equipment

- Proportioning pump with heated lines. See pages 13-14.
- MixMaster Pro injection gun. See page 11.

Packaging

- 10 Gallon Unit Item #: 475-10
- 100 Gallon Unit Item #: 475-100
- 500 Gallon Unit Item #: 475-500

AP SoilGel 200

Acrylic Resins

Ultra-Low Viscosity Acrylic Injection Resin Mainly Applied for Soil Conditioning and Screen Injections

AP SoilGel 200 is a resin, based on Acrylic monomers. After injection, the resin gels in a few seconds to a few minutes based on the amount of activator/initiator added just before use. The final injected product is a soft and slightly sticky crosslinked gel which becomes more jelly-like the more water is added to the base acrylic resin.

Advantages

- Non-toxic for the environment.
- Not flammable.
- No acrylamide.
- Very low viscosity.
- Durable in wet and dry conditions.

Field of Application

PRIMARY APPLICATIONS

- Soil conditioning, -stabilisation, -coagulation.
- Screen injections behind existing structures.
- Filling hollow spaces and gaps behind structures.
(If the soil around the gap is too loose, product flows into the soil)

SECONDARY APPLICATIONS

- Filling and waterproofing gravel nests in concrete.
- Waterproofing of underground structures in concrete and masonry.
(ex. basements, underground parking spaces, ...)
- Waterproofing cracks in rock formations.
- Injection of re-injectable injection hoses.
- Below grade expansion joints.

Accessories

- A2 (TEA) Item #: TEA-QT or TEA-5
- Comp. B (SP) Item #: SP-QT or SP-5
- AG200 Retarder Item #: AG200R-kg
- Spetec Gel Reinforcing Agent Item #: Gel Reinforcing Agent

Equipment

Gel Pump. See page 18.

Packaging

- 5 Gallon Pails Item #: APSoilGel200-5
- 5 Gallon Pail of AP SoilGel 200, 1 Quart of A2 (TE), 1 Quart Plastic Tub (2 lbs.) of Comp. B (SP)
Item #: APSoilGel200-Kit

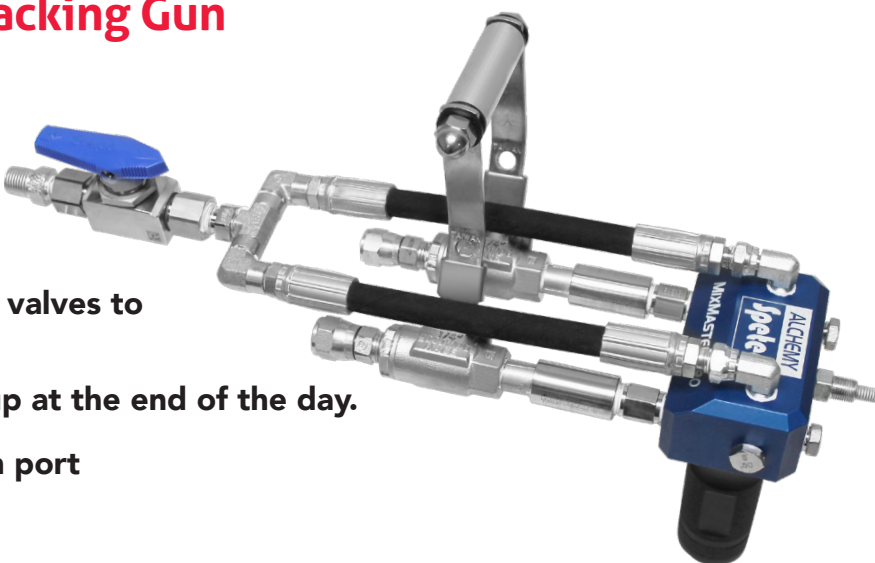
MIXMASTER PRO

Equipment & Accessories

Two-component resin injection gun manufactured specifically for lifting concrete slabs, designed to handle back-pressure. As the essential piece of foam jacking equipment for Alchemy-Spetec's expanding polyurethane foams, the resin injection gun provides highly-efficient concrete leveling. The attachment allows the user to stand while operating the gun.

MixMaster Pro Foam Jacking Gun

- Completely mechanical actuation.
- No side seals or O-rings in the mixing block to replace.
- Integrated rebuildable check valves to save your whip hose.
- Easy break down and clean up at the end of the day.
- Utilizes smaller 3/8" injection port
- Uses water based flush



Item #: ACA-600 V 6.0

MixMaster Pro Stand Up Attachment

No more kneeling required! With the MixMaster Pro Stand Up Attachment, you can lift slabs while standing. Move quicker on the job and save your knees!

- Allows user to stand up.
- Prevents knee strain.
- Increases productivity.

Item #: ACP-600

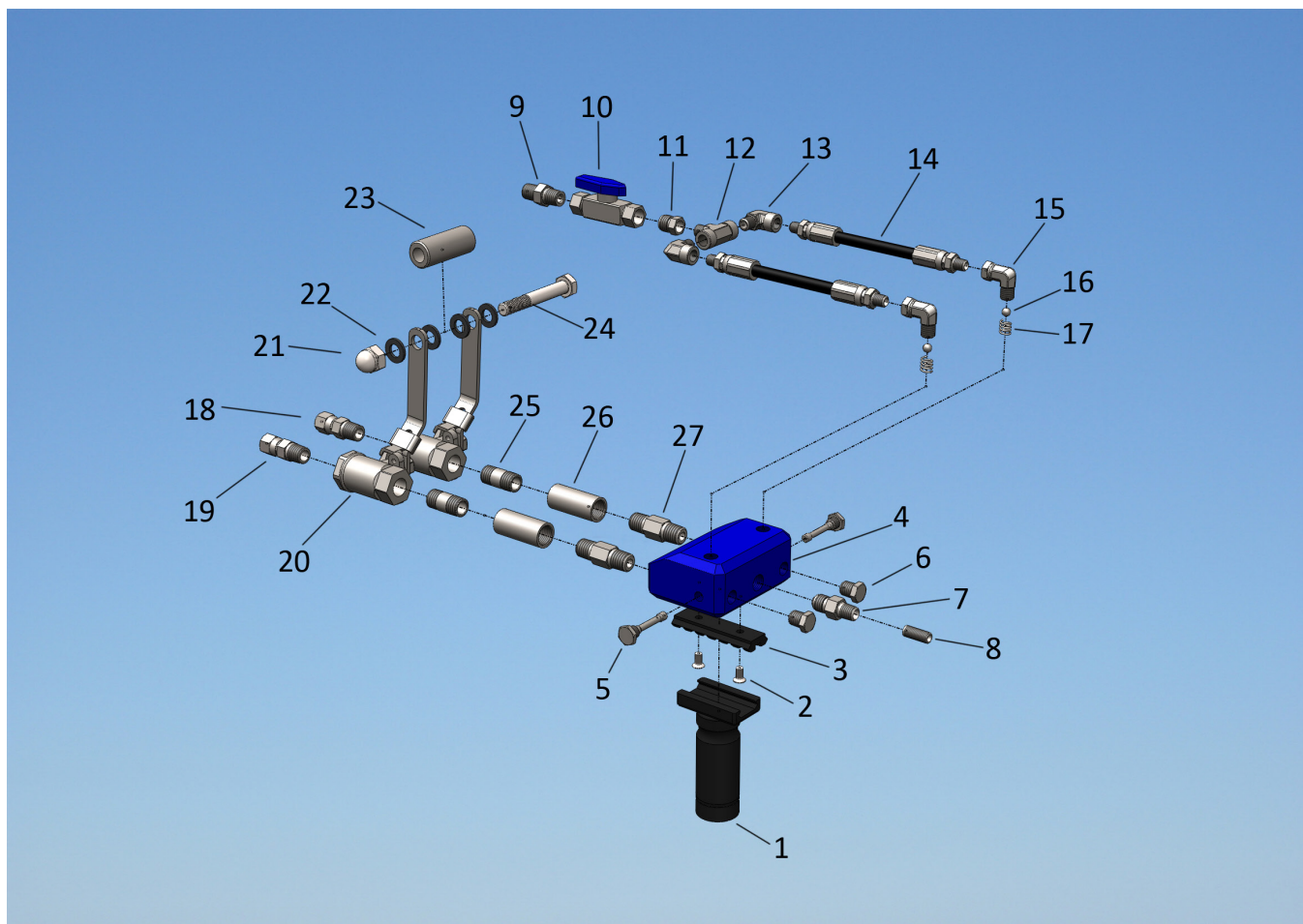


MIXMASTER PRO

Equipment & Accessories

Gun Parts

Exploded View of the MixMaster Pro



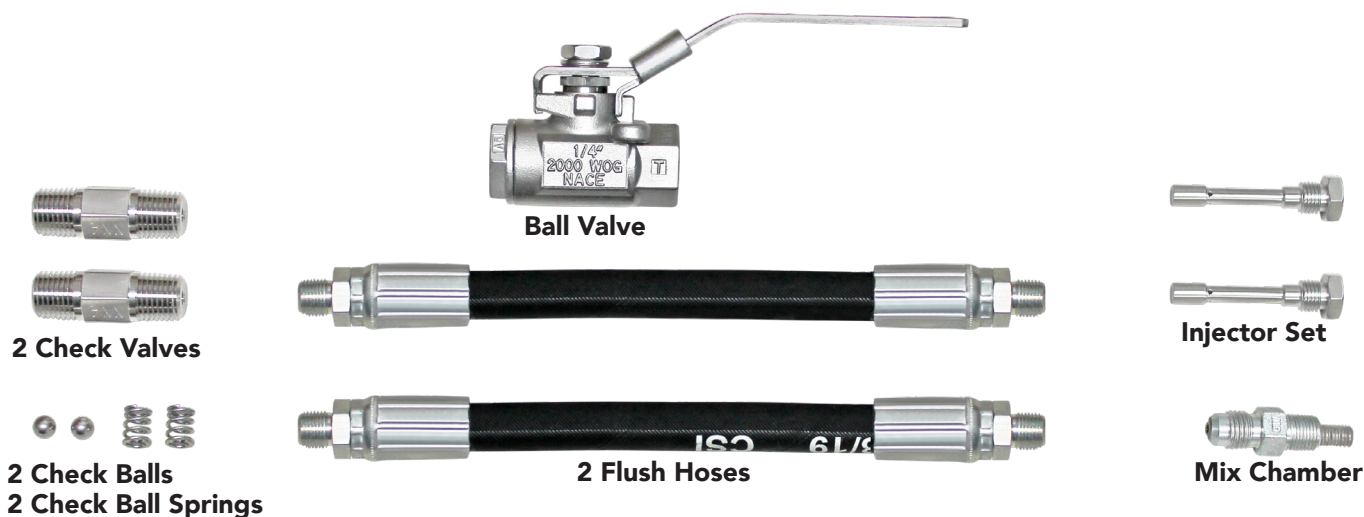
Part Names and Item Numbers

Item Number	Number on Graphic	Description	Item Number	Number on Graphic	Description
MM-101	1	Aluminum Gun Handle	MM-172	14	Flush Hose
MM-102 A	2	Rail Screws	MM-104	15	1/8" male female 90° swivel
MM-102	3	Picatinny Rail	MM-112	16	Check Ball
MM-123	4	Gun Block	MM-118	17	Check Ball Spring
AC-603	5	MixMaster Injector Set .035" (A and B)	MM-173	18	#5 JIC Swivel - Iso
AC-604	5	MixMaster Injector Set .050" (A and B)	MM-174	19	#6 JIC Swivel - Poly
AC-606	5	MixMaster Injector Set .070" (A and B)	MM-170	20	2,000 psi Ball Valve
MM-111 Bolt	6	Hex Plug	MM-194	21	Handle Cap Nut
MM-103 Asy	7 & 8	Mix Chamber for Slab Lifting	MM-195	22	Handle Nylon Washer
MM-175	9	Flush Valve Connector	MM-193	23	Handle Spacer
MM-181	10	6,000 psi Ball Valve	MM-196	24	Handle Bolt
MM-192	11	Grease Bushing	MM-200	25	Thick-Wall Pipe Nipple
MM-177	12	1/8" Branch Tee	MM-201	26	1/4" Stainless Straight Connector
MM-178	13	1/8" Male x 1/8" Female 90° Elbow	MM-180	27	Check Valve

MIXMASTER PRO

Equipment & Accessories

Spare Parts Kit



Item #: ACA-609

MixMaster Tapered Ports



Item #: ACP-560

SLAB LIFTING PUMPS

PH-40 2000 psi



Item #: PMC P-07

Output: 40 lbs/min	Maximum Hose Length: 410 ft	220 Volt
PH-40 1207A16	Size 120 Pumps, 15kw Heaters, 5HP, 1 ph	130 Amps
PH-40 1207A30	Size 120 Pumps, 15kw Heaters, 5HP, 3 ph	80 Amps
PH-40 1209A30	Size 120 Pumps, 18kw Heaters, 5HP, 3 ph	93 Amps
PH-40 1210A30	Size 120 Pumps, 21kw Heaters, 5HP, 3 ph	106 Amps

SLAB LIFTING PUMPS

Equipment & Accessories

PH-25 2000 psi



Item #: PMC P-06

Output: 30 lbs/min	Maximum Hose Length: 410 ft	220 Volt
PH-25 1204A16	Size 120 Pumps, 15kw Heaters, 5HP, 1 ph	130 Amps
PH-25 1205A16	Size 120 Pumps, 15kw Heaters, 5HP, 3 ph	80 Amps
PH-25 1206A16	Size 120 Pumps, 18kw Heaters, 5HP, 3 ph	93 Amps
PH-25 1204A30	Size 120 Pumps, 21kw Heaters, 5HP, 3 ph	106 Amps
PH-25 1205A30		
PH-25 1206A30		

Note: The PH-25 Series is also available in 380 Voltage. Call for specs.

PH-2 2000 psi



Item #: PMC P-08

Output: 28 lbs/min	Maximum Hose Length: 410 ft
PH-2 2000	16:1 Ratio Horizontal Pumps, 10.5 kw Heaters, Single Phase

Note: The PH-2 is air driven with horizontal piston pumps. It is an excellent economical choice for low output jobs.

Transfer Pump



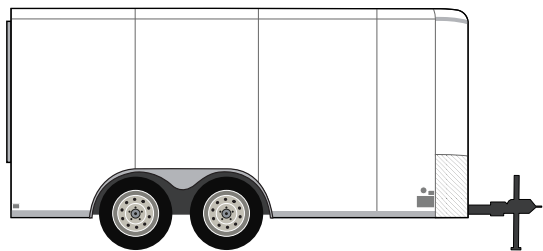
Pressure Ratio	2.2:1
Output (Cont. Duty)	5.5 Gals/min (20.8 Liters/min)
Output (Int. Duty)	11 Gals/min (41.6 Liters/min)
Maximum Air Pressure	120 psi (8.273 bar)
Air Consumption	2.0 cfm per gallon-pumped @ 100 psi 124.67 cc/sec per liter pumped @ 689 kpa
Weight	25 lbs (11.4 kg)
Length	48.92"(1242.6 mm) Used w/55 gallon drums

Item #: PMC P-03

SLAB LIFTING RIGS

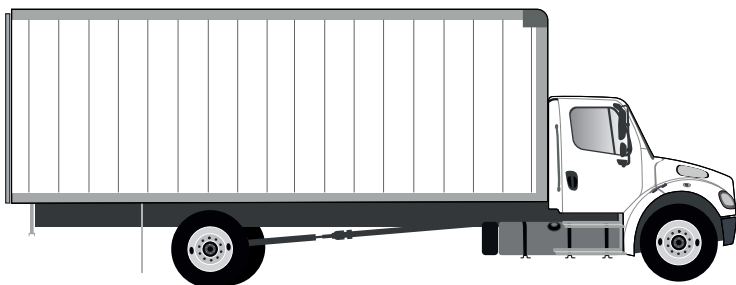
Equipment & Accessories

Trailer and Truck Series

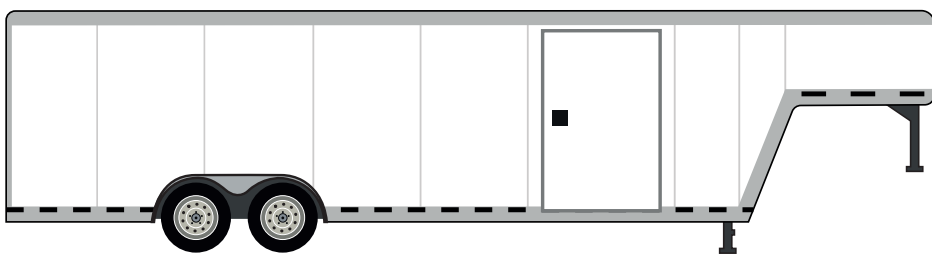


V Nose • 16-20 Foot • \$50k - \$80k

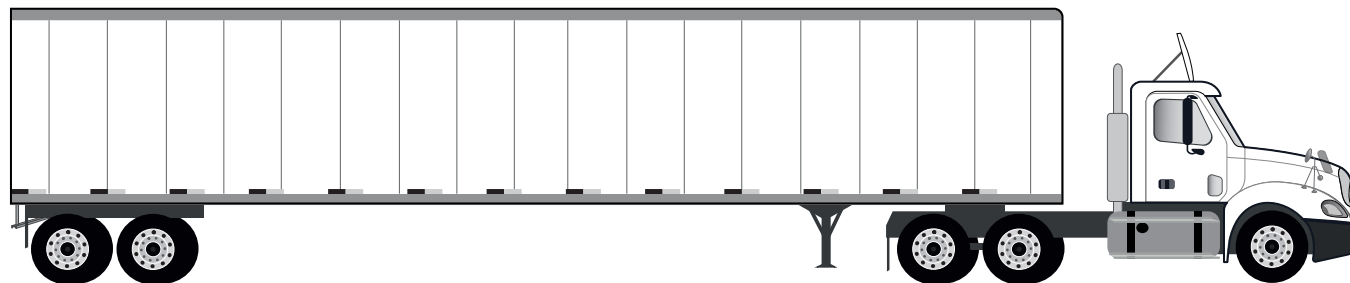
*Financing Available
Call 404-618-0438
For Details!*



**Box Truck Build-Out • 16-28 Foot • \$40k - \$75k
(Truck Not Included)**



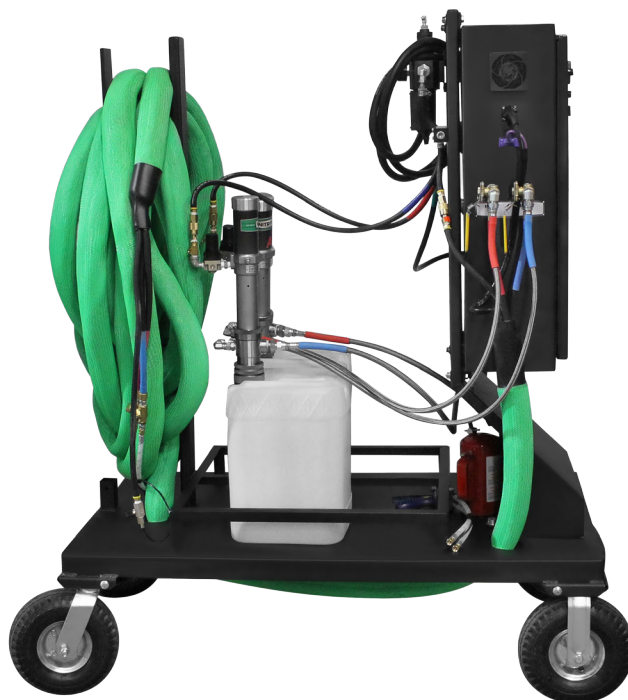
Gooseneck • 26-36 Foot • \$75k - \$90k



**Tractor Trailer Build-Out • 40 Foot • \$60k - \$100k
(Truck & Trailer Not Included)**

SLAB LIFTING CART SYSTEM *Equipment & Accessories*

PolyBadger Lifting System



Easily Fitted To:

- Pickups
- Flatbeds
- Utility Trailers

Different configurations available.

Available with generator/air compressor combo.

Item #: Badger - V1.0

PolyBadger Handi-Gun



Item #: Badger-Handi Gun

PolyBadger Static Mixer



Item #: Cart System-Static Mixers

HOSES & SCUFF GUARDS

Equipment & Accessories

50' Heated Hose



TC or Non-TC.
Pictured without scuff jacket.

TC, 3,500 psi,
No Scuff Jacket
Item #: PMC H-02 3500

TC 2,000 psi,
Scuff Jacket Included
Item #: PMC H-02+Scuff

TC 2,000 psi,
No Scuff Jacket
Item #: PMC H-02

Non-TC, 3,500 psi,
No Scuff Jacket
Item #: PMC H-03 3500

Non-TC 2,000 psi,
Scuff Jacket Included
Item #: PMC H-03+Scuff

Non- 2,000 psi,
No Scuff Jacket
Item #: PMC H-03

10' Whip Hose



Pictured with scuff jacket.
1/4 x 10' whip hose assembly.
3500psi.

Item #: PMC H-01

Sidewinder Scuff Guard



Available in both insulated and non-insulated versions, Sidewinder installs in minutes and offers unmatched hose protection from heavy abrasion, moisture, and temperature energy loss.

Coupler. Non Insulated.
Item #: Sidewinder - Coupler

7' length for whip hose. Non Insulated.
Item #: Sidewinder - 7' Whip

50' length. Non Insulated. Includes Internal Cinch Straps.
Item #: Sidewinder - 50' Non Ins

INJECTION PUMPS

Impact 440 Electric Injection Pump

The IMPACT 440 is an advanced electric injection pump that's ideally suited for residential, property maintenance and small commercial applications.

ADVANTAGES

- Designed to consistently handle 50-100 gallons per week.
- Recommended for small and medium residential and commercial projects.

APPLICATIONS

- Soil stabilization, void fill, and crack injection with polyurethane.
- Pre-grout injection water flush pump (water / grout pumps not to be same pump).
- Flushing Alchemy-Spetec's MixMaster slab lifting gun.

Max. Delivery:	.54 GPM
Max. Operating Pressure:	3300 PSI
Weight (skid frame):	35 lbs.
Motor:	7/8 hpDC Motor

Item #: Titan 440 - MS



INJECTION & GEL PUMPS

Equipment & Accessories

Impact 640 Electric Injection Pump

The IMPACT 640 continues the climb to increased performance. This mid-range unit is perfect for residential, property maintenance, rental and light commercial applications and is equipped with digital technology for improved efficiency.

ADVANTAGES

- Features DigiTrac Integrated Digital Display that includes an anti-theft lock.
- Designed to consistently handle 75-100 gallons per week.
- Recommended for small and medium residential and commercial projects.

APPLICATIONS

- Soil stabilization, void fill, and crack injection with polyurethane.
- Pre-grout injection water flush pump (water / grout pumps not to be same pump).
- Flushing Alchemy-Spetec's MixMaster slab lifting gun.

Max. Delivery:	.70 GPM
Max. Operating Pressure:	3300 PSI
Weight (skid frame):	35 lbs.
Motor:	7/8 hpDC Motor

Item #: Titan 640 - S



PowrTwin 8900 Plus Electric Injection Pump

A step up for projects that requires greater power and output, the PowrTwin 8900 Plus is our best-selling hydraulic piston pump, favored by contractors who want to complete large application jobs in record time with high profit margins.

Max. Delivery, Gas:	2.35 GPM
Max. Delivery, Electric:	1.25 GPM
Max. Operating Pressure:	3600 PSI
Engine, Gas:	200 cc HP
Motor, Electric:	2.0 HP
Weight:	155 lbs

Item #: Titan 8900



Gel Pump

The Alchemy-Spetec Gel Pump is a pneumatically-operated, high pressure, stainless steel, dual-component chemical injection machine designed primarily for low viscosity polyacrylate gels and other chemical grout products.

Motor Pressure Ratio:	1:15
Operating Pressure:	0-120 bars
Mixing Ratio:	1:1
Flow Per Double Stroke:	144 ccm
Max. Flow Rate:	25 l/min.
Compressor Requirement:	480 l/min x 7 bars
Length of High-Pressure Hoses:	7,5 m
Compression Head:	3-link system
Dimensions:	W 55 cm x D 50 cm x H 100 cm
Pump Weight:	50 kg

Item #: AP 1C DP



SOIL TESTING

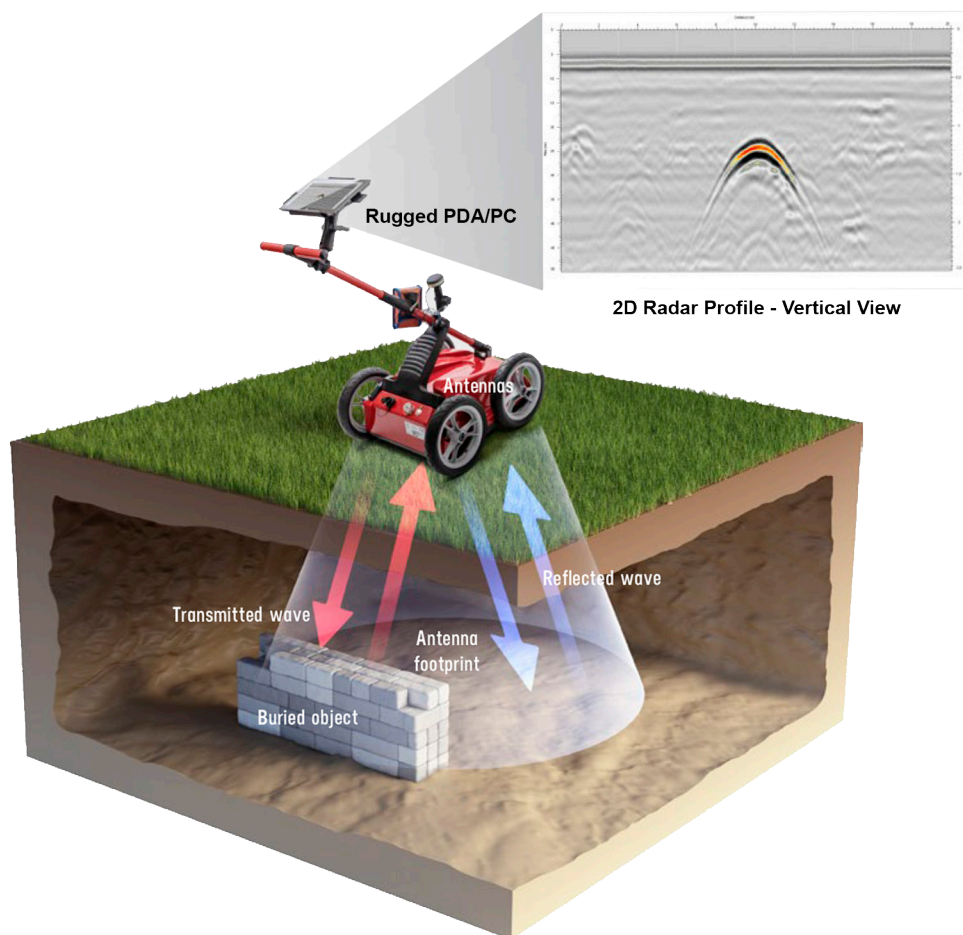
Equipment & Accessories

Ground Penetrating Radar



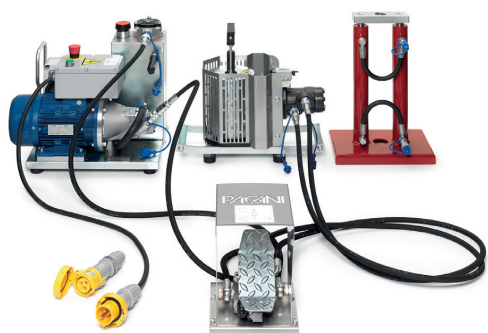
The Deep Look wireless GPR (manufactured by Radar Team) collects data from hundred thousands of pulse reflections each second to help researchers identify objects below ground.

It works in a multi frequency band from 50 to 1400 MHz, thus replacing several antennas with different frequencies used by other and older GPR systems.

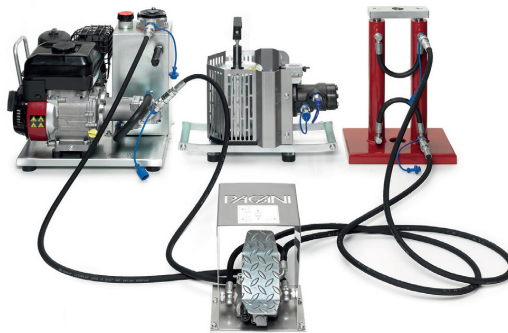


Item #: GPR

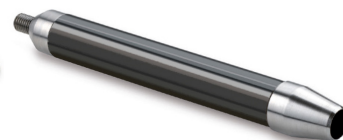
Dynamic Cone Penetrometer



Gasoline Engine.



Electric Engine.



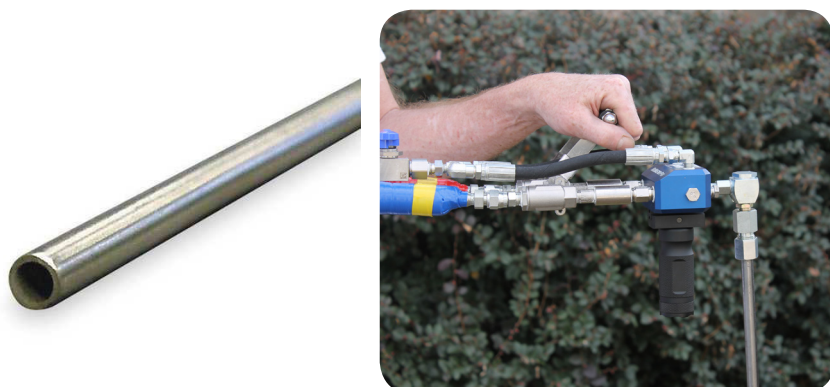
Soil Sampler.

Item #: Pagani - DPM-30

DEEP SOIL LIFTING

Equipment & Accessories

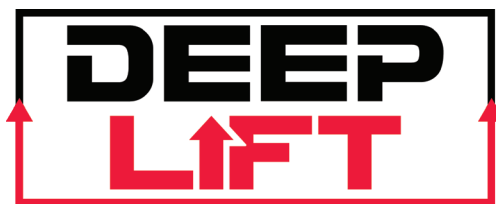
Galvanized Soil Tubing



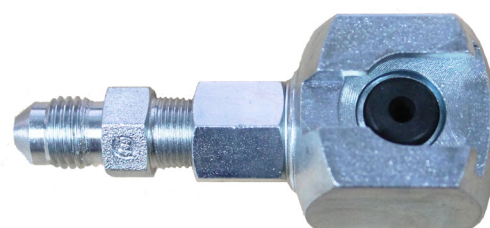
Item #: ACA-800

In order to connect to galvanized tubing to a deep soil pipe, you'll need the optional MixMaster Button Head Coupler Assembly. This replaces the Threaded Mix Chamber in the center front of the gun.

Connect button head fitting to hydraulic tubing. Slide the Button Head Coupler Assembly over the Button Head Fitting and begin to inject. Although the fitting may seem loose when you first slide the Button Head Coupler Assembly over it, it will provide a leak tight seal.



Button Head Coupler Assembly



Item #: ACA-601

CLEANING SUPPLIES

Flush, Soak & Lube

AP Flush 121

A non-flammable solvent for cleaning uncured polyurethane from injection equipment.

1 Gallon Unit Item #: 121-1

5 Gallon Unit Item #: 121-5

AP Flush 125

A non-flammable solvent for cleaning uncured polyurethane from the MixMaster Pro. Also useful for preventing polyurethane stains on concrete surfaces. Sold in 5 gallon units.

Item #: 125-5

AP Soak 130

Cleans cured resin from metal components. Sold in 1 gallon units.

Item #: 130-1

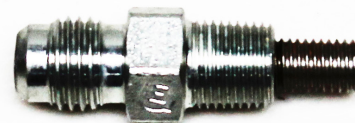
AP Lube 190

Pump lubricant and ISO neutralizer.

1 Gallon Unit Item #: 190-1

5 Gallon Unit Item #: 190-5

Threaded Mix Chamber



Item #: MM-162

MixMaster Flush Pot Assembly



For cleaning the MixMaster gun.

Item #: MM-165 Asy

GEOTECH ACCESSORIES

Equipment & Accessories

Dial Indicator



Provides real-time lift measurement during the concrete slab leveling process.

Item #: ACA-650

Jack & Beam System



Leverage device for positioning slabs in place while lifting or stabilizing with polyurethane. 2 beams, 4 jacks, accessories.

Item #: ACA-750

Button Head Fittings



AP Button head fittings (1/4" NPT x 5/8"). Bag of 100.

Item #: ACA-570

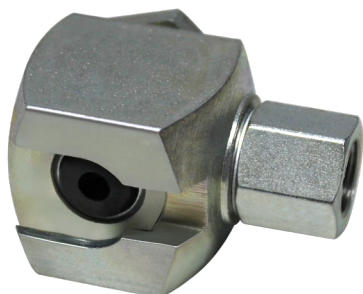
Grey Plastic Button Head Packer with Sleeve

5/8" x 4" grey plastic button head packer with sleeve. Button-head top. Bag of 100.



Item #: ACP-2102

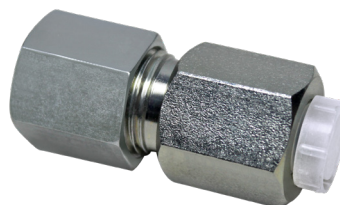
Button Head Coupler



5/8" slide coupler.

Item #: HW-255

Injection Tubing Assembly



1/2" Tubing injection assembly. Consists of nut, ferrule, and button head adapter.

Item#: ACA-810



This information is provided in good faith, but without guarantee. The application, use and processing of the products are beyond our control and therefore your entire responsibility. Should Alchemy-Spetec nevertheless be held liable for any damage, such liability will be limited to the value of the goods delivered by us. We are committed to providing high-quality goods at all times. This version supersedes all previous versions.
Revision Date: August 26, 2019 1:42 pm