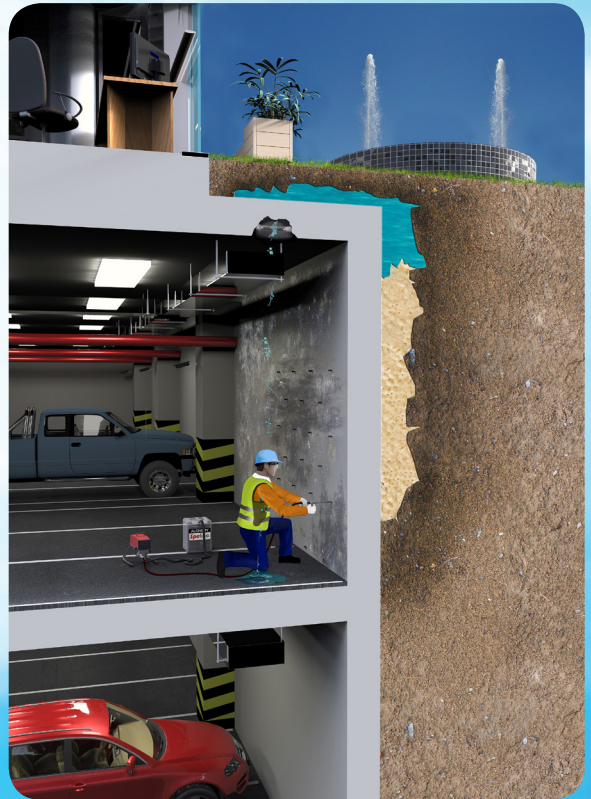




LEAK SEAL PRODUCT CATALOG



**POWERFUL POLYMERS
PAINLESS PROCEDURES
RAPID RESULTS**



www.Alchemy-Spetec.com

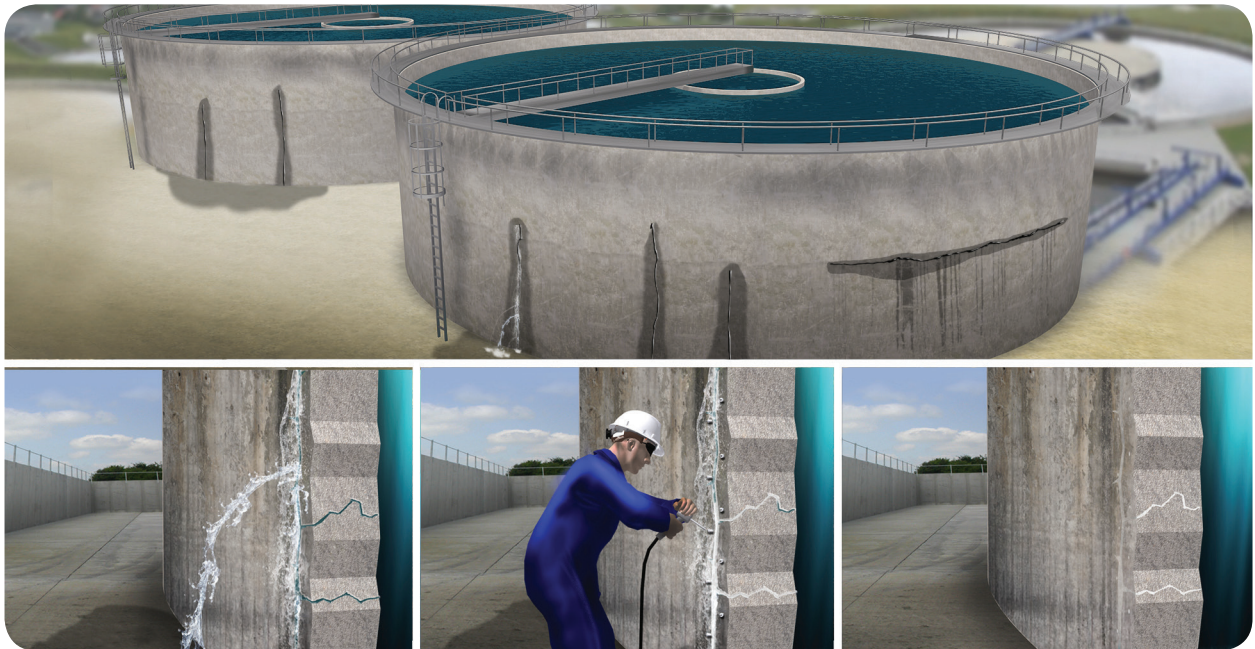
OVER 30 YEARS OF EXPERIENCE

For more than 30 years, the key partners in Alchemy-Spetec have been developing and manufacturing polyurethane injection resins.

Alchemy-Spetec offers high-quality products for civil engineering to stabilize soil, seal leaks, and lift concrete slabs. Our products are mainly used in tunnels, mining, metro systems, excavations, dams, ground barriers and foundations.

Alchemy-Spetec resins have been used in numerous projects all over the world.

Our dedicated team of well experienced engineers and technicians make sure that we offer the right solutions for your problems.



Tech Support:
404-618-0438

Alchemy-Spetec
4508 Bibb Blvd, Suite B5
Tucker, GA 30084
www.Alchemy-Spetec.com



A worldwide standard in grouting.



The Spetec line of leak seal products are used in project applications spanning all continents.

Spetec injection resins are mainly used in the waterproofing of below-grade structures such as tunnels, metro stations, dams, basements and in the condition of soils for waterproofing, chemical containment, and strengthening.

Leak Seal Product Application Matrix

✓ = Primary Product ✓ = May Also Be Used * = Not for Use in Environments Subject to Drying Out

	Spetec PUR H100	Spetec PUR H200	Spetec PUR GT350	Spetec PUR GT380	Spetec PUR F400	Spetec PUR GT500	Spetec PUR High- Foamer	Spetec Boom! Seal	Spetec AG100 *	Spetec AG200 *	Spetec ITS Kit	Spetec R-ITS	Spetec WT400	Spetec SST500	AP Joint Fill 800	AP Fast Repair 850	AP NS950 Epoxy	Epicol INJ LV
Leak Seal																		
Hairline Cracks	✓	✓	✓	✓	✓	✓	✓	✓	✓	✓								
Wide Cracks or Joints		✓			✓		✓	✓			✓	✓						
Gushing Leaks	✓	✓			✓		✓	✓										
Oakum Gasket	✓	✓	✓	✓	✓	✓	✓											
Void Fill																		
Curtain Wall Grouting	✓	✓	✓	✓	✓	✓	✓		✓	✓								
Filling Gravel Layers	✓	✓				✓	✓	✓	✓	✓								
Soil Stabilization																		
Permeation Grouting	✓	✓		✓			✓		✓	✓								
Below Grade Cutoff Wall		✓					✓		✓	✓								
Excavation Pit Stabilization	✓	✓					✓											
Preventative Waterstop																		
Construction Joints											✓	✓	✓	✓				
Pipe Penetrations											✓	✓	✓	✓				
Sheet Pile Joints													✓					
Concrete Structure and Floor Repair																		
Epoxy Injection of Cracks																		✓
Interior Joint Fill															✓			
Horizontal Crack Chasing																✓		✓
Horizontal Spall Repair																✓	✓	
Anchoring and Surface Seal																	✓	

- Concrete Tanks
 - Elevator Pits
 - Manholes
 - Sewer & Stormwater Pipes
- Lift Stations
 - Tunnels
 - Sheet Piles
 - Parking Structures

SPETEC PUR H100

Remedial Waterproofing

Semi-Rigid Polyurethane Injection Resin for Waterproofing

Spetec PUR H100 is a single component, water activated, hydrophobic, semi-flexible polyurethane foam injection resin.

Advantages

- Different reaction times are possible by adjusting the percentage of GEN ACC accelerator.
- The closed-cell structure of cured polyurethane ensures permanent sealing of cracks and joints.
- Cured polyurethane exhibits high strength and good chemical resistance (contact our Technical Service for chemical resistance).
- Cured polyurethane is harmless for the environment and resistant to biological attack.
- *Certified to NSF 61-5 (Approved for contact with drinking water).*



NSF/ANSI 61-5

Field of Application

- Water cut-off of large flow and high pressure water leaks.
- Water cut-off of water leaks in foundations such as diaphragm walls, sheet piles and secant piles.
- Stabilization and water cut-off of large cracks, voids and gravel layers.
- Pre and post injections in mines, tunnels, pipe jacking, drill & blast and TBM applications.
- Injections in combination with cement-based grout.
- Crack and gravel layer injections in concrete structures.
- Soil stabilization and anchors in porous geology.
- Water cut-off of sewer water leaks and sewer stabilization.
- Probe grouting for below grade pipes.
- Manhole injections.

Accessories

- Spetec Pump Cleaner Item #: PumpCI-5
- GEN ACC Item #: ACCGEN-0.5 (1/2 Gallon), ACCGEN-5 (5 Gallon)
- Mechanical Packers See Pages 28-33
- Spetec Surface Guard Item #: Surface-5

Equipment

Single component electric injection pump recommended.

Packaging

- 10.5 oz. Hot Shot Cartridges Item #: H100-HSC
- 5 Gallon Pails Item #: H100-5
- 50 Gallon Drums Item #: H100-50 (Available Upon Request)

SPETEC PUR H200

Remedial Waterproofing

Water-Activated Semi-Rigid Polyurethane Foam Injection Resin

Spetec PUR H200 is a single component, water-activated, hydrophobic, low viscosity, closed cell polyurethane injection resin.

Advantages

- Very low viscosity.
- Water impermeable.
- Adjustable set time – as fast as 20 seconds.
- Injected as a single component.
- Phthalate free (more environmentally friendly).
- *Certified to NSF 61-5 (Approved for contact with drinking water).*



Field of Application

- Cutting off high flow leaks.
- Filling voids behind concrete structures.
- Cutting off underground water flows.
- Stabilizing soil.
- Seawall repair

Accessories

- ACC H200 Item #: ACCH200-0.5 (1/2 Gallon), ACCH200-5 (5 Gallon)
- ACC H200 Fast Item #: ACCH200F-0.5 (1/2 Gallon), ACCH200F-5 (5 Gallon)
- Spetec Pump Cleaner Item #: PumpCI-5
- Spetec Surface Guard Item #: Surface-5

Equipment

Single component electric injection pump recommended.

Packaging

- 5 Gallon Pails Item #: H200-5
- 50 Gallon Drums Item #: H200-50
- 250 Gallon Totes Item #: H200-250

SPETEC PUR GT350

Remedial Waterproofing

Flexible Polyurethane Injection Resin for Waterproofing

Spetec PUR GT350 is a single-component, MDI based hydrophilic, flexible polyurethane injection resin for waterproofing.

Advantages

- Additional waterproofing due to post expansion.
- Fast reaction with immediate increase of viscosity.
- Can be injected as 1 component or 2 component in combination with water, maximum amount of water is 200%.
- Foam factor 6-8x expansion.
- Cured polyurethane is highly flexible, ideally suited for structures where a high degree of settlement and movement can occur.
- Cured polyurethane is harmless for the environment and resistant to biological attacks.

Field of Application

- Shut off water leaks in concrete, brickwork and sewers where movement and settlement may occur.
- Water cut-off of water leaks in foundations such as diaphragm walls, sheet piles and secant piles.
- Sealing water-carrying cracks and joints in tunnel segments.
- Curtain grouting behind tunnel, concrete, brickwork and sewer walls.
- Injection of failing membranes and liners in tunnels and buildings.

Accessories

- Spetec Pump Cleaner **Item #: PumpCI-5**
- Spetec Surface Guard **Item #: Surface-5**
- Mechanical Packers **See Pages 28-33**

Equipment

Single component electric injection pump recommended.

Packaging

5 Gallon Pails **Item #: GT350-5**

SPETEC PUR GT380

Remedial Waterproofing

Hydrophilic Polyurethane Gel Injection Resin

Spetec PUR GT380 is a single component, low viscosity, flexible hydrophilic polyurethane gel injection resin.

Advantages

- 1 Component hydrophilic polyurethane resin, additional mechanical water shut-off through expansion after curing.
- Can be injected as 1 component or 2 component in combination with water.
- Depending on the amount of water added, a rubbery foam (2x to 5x expansion) or stable polyurethane gel (5x to 7x expansion) is formed.
- Cured polyurethane is highly flexible, ideally suited for structures where a high degree of settlement and movement can occur.
- Cured polyurethane is harmless for the environment and resistant to biological attacks.

Field of Application

- Shut off water leaks in concrete, brickwork and sewers where movement and settlement may occur.
- Water cut-off of water leaks in foundations such as diaphragm walls, sheet piles and secant piles.
- Sealing water-carrying cracks and joints in tunnel segments.
- Curtain grouting behind tunnel, concrete, brickwork, sewer walls, and sheet piling.
- Automatic sewer injections with packer systems.
- Soil stabilization.
- Injection of water cut-off membranes and liners in tunnels.

Accessories

- Spetec Pump Cleaner **Item #: PumpCI-5**
- Mechanical Packers **See Pages 28-33**
- Spetec Surface Guard **Item #: Surface-5**
- Spetec Gel Reinforcing Agent **Item #: Gel Reinforcing Agent-5**

Equipment

Multi-ratio pump or single component electric injection pump recommended.

Packaging

5 Gallon Pails **Item #: GT380-5**

SPETEC PUR F400

Remedial Waterproofing

Hydrophobic Closed Cell Polyurethane Foam Injection Resin

Spetec PUR F400 is a single component, solvent and phthalate free, water reactive, hydrophobic, closed cell, low viscosity, shrink-free, flexible, one component polyurethane injection resin designed to shut off water leaks.

Advantages

- Different reaction times are possible by adjusting the percentage of GEN ACC accelerator.
- The closed-cell structure of cured polyurethane ensures permanent flexible sealing of cracks and joints.
- Cured polyurethane is flexible, shrink-free and exhibits good chemical resistance (contact our Technical Service for chemical resistance).
- Cured polyurethane is harmless for the environment and resistant to biological attacks.
- *Certified to NSF 61-5 (Approved for contact with drinking water).*



Field of Application

- Shut off water leaks in concrete, brickwork and sewers where movement and settlement may occur.
- Water cut-off of water leaks in foundations such as diaphragm walls, sheet piles and secant piles.
- Sealing water-carrying cracks and joints in tunnel segments.
- Curtain grouting behind tunnel, concrete, brickwork and sewer walls.
- Injection of water cut-off membranes and liners in tunnels.

Accessories

- Spetec Pump Cleaner Item #: PumpCI-5
- GEN ACC Item #: ACCGEN-0.5 (1/2 Gallon), ACCGEN-5 (5 Gallon)
- Spetec Surface Guard Item #: Surface-5
- Mechanical Packers See Pages 28-33

Equipment

Single component electric injection pump recommended.

Packaging

5 Gallon Pails Item #: F400-5

SPETEC PUR GT500

Remedial Waterproofing

Hydrophilic Closed-Cell Polyurethane Foam Injection Resin

Spetec PUR 500 is a single component, low viscosity, flexible hydrophilic polyurethane foam injection resin.

Advantages

- No catalyst required.
- Tenacious bond to wet concrete.
- High elongation.
- Thin enough to penetrate tight cracks.
- Moderately hydrophilic.
- Phthalate free (more environmentally friendly).
- *Certified to NSF 61-5 (Approved for contact with drinking water).*



NSF/ANSI 61-5

Field of Application

- Sealing cracks in concrete structures through pressure injection.
- Sealing hairline cracks, expansion joints, wide cracks, pipe joints, pipe penetrations.
- Saturating dry oakum to create a flexible gasket for sealing pipe penetrations, joints and larger defects in concrete structures.

Accessories

- Spetec Pump Cleaner Item #: PumpCI-5
- Oakum Item #: ACA300 (5 lb Box), ACA350 (Ten 5 lb Boxes)
- Mechanical Packers See Pages 28-33
- AP Soak 130 Item #: 130-1 (1 Gallon), 130-5 (5 Gallon)
- Spetec Surface Guard Item #: Surface-5

Equipment

Single component electric injection pump recommended.

Packaging

5 Gallon Pails Item #: GT500-5

SPETEC PUR HIGHFOAMER Remedial Waterproofing

Fast Reacting High Foaming Semi-Rigid Injection Resin for Sealing Gushing Leaks and Filling Voids

Spetec PUR HighFoamer is a single component, closed cell, hydrophobic, water reactive, solvent and phthalate free, low viscosity polyurethane injection resin for cutoff of large water leaks and void filling. In contact with water, SPETEC PUR HIGHFOAMER will react and expand quickly.

Advantages

- Variable reaction times with use of GEN ACC accelerator.
- Cured polyurethane is semi-rigid and exhibits high strength and good chemical resistance (contact our Technical Service for chemical resistance).
- Cured polyurethane is harmless for the environment and resistant to biological attack.
- Up to 40x - 50x expansion.
- *Certified to NSF 61-5 (Approved for contact with drinking water).*



NSF/ANSI 61-5

Field of Application

- Water cut-off of large flow and high pressure water leaks.
- Stabilizations and water cut-off of large cracks, voids and gravel layers.
- Pre and post injections in mines, tunnels, pipe jacking, drill & blast and TBM applications.
- Injections in combination with cement-based grout.
- Crack and gravel layer injections in concrete structures.
- Soil stabilization and anchors in porous geology.
- Water cut-off of sewer water leaks and sewer stabilization.
- Probe Grouting for below grade pipes.
- Void Filling.

Accessories

- Spetec Pump Cleaner Item #: PumpCI-5
- GEN ACC Item #: ACCGEN-0.5 (1/2 Gallon), ACCGEN-5 (5 Gallon)
- Mechanical Packers See Pages 28-33
- Spetec Surface Guard Item #: Surface-5

Equipment

Single component electric injection pump recommended.

Packaging

- 5 Gallon Pails Item #: HighFoamer-5
- 50 Gallon Drums Item #: HighFoamer-50 (Available Upon Request)
- 250 Gallon Totes Item #: HighFoamer-250 (Available Upon Request)

SPETEC BOOM! SEAL

Remedial Waterproofing

Two-Component, Highly Expansive Polyurethane for Leak Seal

Spetec Boom! Seal is a two component, high expansion (35x), hydro insensitive polyurethane foam.

Advantages

- 90% of full strength in 15 minutes.
- High expansion rate of 35x.
- Works in wet environments - displaces water.
- Bonds with soil and concrete.
- Closed cell.

Field of Application

- Shutting down gushing leaks.
- Sealing leaks in manholes.
- Sealing pipe penetrations.

Accessories

Spetec Surface Guard **Item #: Surface-5**

Equipment

1:1 Two-Component Manual Cartridge Gun **Item #: ACP-2000**

Packaging

300 x 300 ml Cartridges / Case of 12 **Item #: Cart22-Boom**

SPETEC AG100

Acrylic Resins

Ultra-Low Viscosity Acrylic Injection Resin Mainly Applied for Waterproofing Cracks, Joints and for Screen Injections

Spetec AG100 is a resin, based on Acrylic monomers. After injection, the resin gels in a few seconds to a few minutes based on the amount of activator/initiator added just before use. The final injected product is a soft and tacky crosslinked gel that provides a waterproofing course.

Advantages

- Non-toxic for the environment.
- Not flammable.
- No acrylamide.
- Very low viscosity.
- Durable in wet and dry conditions.

Field of Application

PRIMARY APPLICATIONS

With Water or Spetec Reinforcing Agent:

- Screen injections behind existing structures.
- Waterproofing - Low flow leaks:
- Underground structures in concrete and masonry. (ex. basements, underground parking spaces, ...).
- Cracks in concrete and rock formations.
- Filling and waterproofing gravel nests in concrete.
- Preventive waterproofing of structures with constant water pressure. (If treated during the dry period)
- Injection into very fine leaking cracks or joints.
- Injection of re-injectable injection hoses.

Only with Spetec Reinforcing Agent:

- Waterproofing voids and joints (max 2 - 3 mm) of tunnel elements.
- Below grade expansion joints. (Below level of the groundwater table)

SECONDARY APPLICATIONS

With Water or Spetec Gel Reinforcing Agent:

- Sewer joint repair (only manual method)

Only with Spetec Reinforcing Agent:

- Filling hollow spaces and gaps behind structures (If the soil around the gap is too loose, product flows into the soil)

Accessories

- A2 (TEA) Item #: TEA-QT or TEA-5
- Comp. B (SP) Item #: SP-QT or SP-5
- Spetec Gel Reinforcing Agent Item #: Gel Reinforcing Agent

Equipment

Gel Pump. See page 24.

Packaging

- 5 Gallon Pails Item #: AG100-5
- Kit: 5 Gallon Pail of AG100, 1 Quart of A2 (TE), 1 Quart Plastic Tub (2 lbs.) of Comp. B (SP) Item #: AG100-Kit

SPETEC AG200

Acrylic Resins

Ultra-Low Viscosity Acrylic Injection Resin Mainly Applied for Soil Conditioning and Screen Injections

Spetec AG200 is a resin, based on acrylic monomers. After injection, the resin gels in a few seconds to a few minutes based on the amount of activator/initiator added just before use. The final injected product is a soft and slightly sticky crosslinked gel which becomes more jelly-like the more water is added to the base acrylic resin.

Advantages

- Non-toxic for the environment.
- Not flammable.
- No acrylamide.
- Very low viscosity.
- Durable in wet and dry conditions.
- *Certified to NSF 61-5 (Approved for contact with drinking water).*



Field of Application

PRIMARY APPLICATIONS

- Soil conditioning, -stabilisation, -coagulation.
- Screen injections behind existing structures.
- Filling hollow spaces and gaps behind structures.
(If the soil around the gap is too loose, product flows into the soil)

SECONDARY APPLICATIONS

- Filling and waterproofing gravel nests in concrete.
- Waterproofing of underground structures in concrete and masonry.
(ex. basements, underground parking spaces, ...)
- Waterproofing cracks in rock formations.
- Injection of re-injectable injection hoses.
- Below grade expansion joints.

Accessories

- A2 (TEA) Item #: TEA-QT or TEA-5
- Comp. B (SP) Item #: SP-QT or SP-5
- AG200 Retarder Item #: AG200R-kg
- Spetec ITS Kit Item #: ACA-1001
- Spetec R-ITS Items sold separately. See Technical Data section of Tech Data Sheet.
- Spetec Gel Reinforcing Agent Item #: Gel Reinforcing Agent

Equipment

Gel Pump. See page 24.

Packaging

- 5 Gallon Pails Item #: AG200-5
- Kit: 5 Gallon Pail of AG100, 1 Quart of A2 (TE), 1 Quart Plastic Tub (2 lbs.) of Comp. B (SP) Item #: AG200-Kit
- 250 Gallon Totes Item #: AG200-250

SPETEC ITS KIT

Preventative Waterproofing

System for Injection of Joints Via Pre-Installed Canal

The Spetec ITS Kit is an injection tube system that allows injection of cold and construction joints via a pre-installed injection canal. It is placed in the joint during construction. It acts as a canal for the injection resin which will, when in contact with water, expand and seal the joint permanently. The Spetec ITS can be injected with Spetec PUR 500, Spetec PUR F400 or Spetec AG200.

Advantages

- Monolithic waterstop seal.
- Effective in applications with honeycomb concrete.
- Will not fold or crush with concrete weight.
- Can be injected under flowing water.
- Chemical resistance once injected.
- With NSF approved resin, can be installed in a potable water application.

Field of Application

- Primary waterstop system.
- Cold joints.
- Expansion joints.
- Replacement for traditional PVC waterstops.

Accessories

- Spetec PUR GT500 Item #: GT500-5
- Spetec PUR F400 Item #: F400-5
- Spetec AG200 Item #: AG200-Kit

Equipment

- No special tools are required to install the Spetec ITS.
- For injecting the Spetec ITS a pump is needed. This pump can be manual, pneumatic or electric.
- Conical packers to connect the pump to the injection tube outlets.

Packaging

Kits Item #: ACA-1001

SPETEC R-ITS

Preventative Waterproofing

System for Re-Injection of Joints Via Pre-Installed Canal

The Spetec Re-Injectable Tube System is a primary waterstop in cold joints and pipe joints. When used with acrylates like Spetec AG200, it can be flushed with water at a pre-determined set time, creating a clean tube ready for subsequent use. It can also function as a standard single-use injection tube system with polyurethane injection resins like Spetec PUR H100 and Spetec PUR F400. The Spetec R-ITS is compatible with combination grouting techniques involving microfine cements.

Advantages

- Monolithic waterstop seal.
- Effective in applications with honeycomb concrete.
- Will not fold or crush with concrete weight.
- Can be injected under flowing water.
- Chemical resistance once injected.
- With NSF approved resin, can be installed in a potable water application.
- Stabilization / Permeation combination grouting.
- Re-Injectable functionality.

Field of Application

- Primary waterstop system.
- Cold joints.
- Expansion joints.
- Replacement for traditional PVC waterstops.
- Combination grouting techniques.
- Tunnel crowns, slurry walls, and details.
- Stabilization / Permeation combination grouting.

Accessories

- Spetec AG200 Item #: AG200-Kit
- Spetec PUR H100 Item #: H100-HSC (10.5 oz. Cartridges), H100-5 (5 Gallon Pails)
- Spetec PUR F400 Item #: F400-5

Equipment

- Tooling to insert hose clamps.
- Dispensing equipment to install WT400 as needed.

Packaging

Items sold separately. Contact Alchemy-Spetec for details.

SPETEC WT400

Preventative Waterproofing

MDI Based Hydrophilic Caulk

Spetec WT400 is a caulk designed to swell and/or expand in the presence of water creating a water tight seal around pipe penetrations, cold joints and other water-stop locations.

Advantages

- One-component.
- MDI based.
- High elongation.
- No volatile solvents.
- Seals rough concrete.
- High expansion.
- Can be applied underwater.
- Non-sag paste.
- Great adhesion to most surfaces.
- Safe for marine environments.
- Good chemical resistance.

Field of Application

- Waterstop.
- Tunnel segment joints.
- Pipe penetrations.
- Poured wall joints.
- Cold joints.
- Sheet pile joints.
- Manhole joints.
- Pre-cast segments.
- NOT for surface applied applications.

Accessories

- SST500 Item #: ACP-1060.cs (Case of 5), ACP-1065.cs (Case of 9)
- Spetec ITS Kit Item #: ACA-1001
- SPetec R-ITS Items sold separately. See Technical Data section of Tech Data Sheet.

Equipment

Sausage/bulk load tool.

Packaging

20 oz. Sausages - Case of 12 Item #: ACP-1075.cs

SPETEC SST500

Preventative Waterproofing

Hydrophilic Synthetic Waterproofing Strip for Sealing Joints

Spetec SST500 strips are simply fastened onto an existing joint. When in contact with water in a confined space, the strip will swell and stop the infiltration. Spetec SST strips remain consistent in performance throughout their life cycle and their flexibility allows them to fill voids and cracks in the immediate surrounding area.

Advantages

- Ecologically friendly.
- Good impact resistance.
- Good overall chemical resistance.
- Permanently active system throughout "wet/dry cycles".
- Easy to install, no special tools required.
- Swells more than 500% when in contact with water.
- Will not sag when correctly placed.
- High flexibility and swelling capacity.
- Resistant to petroleum, mineral oils, vegetable oils and greases.

Field of Application

- Construction joints in concrete.
- Cold joints.
- Pipe penetrations through concrete.
- Joints between prefabricated pipe elements.
- Joints between pre-casted concrete elements like water tanks and manholes.
- Joints between floor slabs/walls and secant pile walls/slurry walls/sheet pile.
- Sealing vertical and horizontal construction joints.
- Sealing cold joints between concrete precast elements and tunnel elements.
- Sealing pipe penetrations.
- Not suitable for expansion joints.

Accessories

- WT400 Item #: ACP-1075.cs
- ITS Kit Item #: ACA-1001

Equipment

Standard caulking gun if using in conjunction with WT400.

Packaging

- 32.80 Foot Roll, 4/5" Width x 1/5" Thickness, Case of 5 Item #: ACP-1060.cs
- 32.80 Foot Roll, 4/5" Width x 2/5" Thickness, Case of 9 Item #: ACP-1065.cs

AP JOINT FILL 800

Concrete Crack Repair

Two Component, Semi-Rigid Joint Filler

AP JOINT FILL 800 is a two-component hybrid polyurea joint filler with fast reaction allowing for shave time in as little as 5 minutes. The fast reaction allows for minimal down time and facilities to be in operation quickly.

Advantages

- Fast cure/shaveable in 5 minutes.
- Chemical cure.
- Impact resistant.
- Low temperature cure.

Field of Application

- Concrete joint filling.
- General concrete repair applications requiring a fast-set semi-rigid product.
- Sealing random cracks/crack chasing.

Equipment

- 10 Gallon Units: Joint Filling Machine.
- Cartridges: 300×300 cartridge gun.
- Air compressor with oil separator.
- Concrete grinder with ZEC wheel.

Packaging

- 20.5 oz Cartridges, Case of 12 **Item #: Cart22-800**
- 10 Gallon Unit **Item #: 800-10**

AP FAST REPAIR 850

Concrete Crack Repair

Two Component Polyurethane System

AP FAST REPAIR 850 is a zero VOC, two-component polyurethane system. The high quality thermoset is designed for fast repair of concrete (spalls, cracks, etc.). Low viscosity allows for maximum penetration into cracks and porous concrete. AP FAST REPAIR 850 can be mixed with up to equal parts oven dry silica sand to increase product yield and compressive strength.

Advantages

- Extremely fast cure time.
- High compressive strength.
- Low viscosity.
- Low temperature cure.
- Suitable for DOT work.

Field of Application

- Horizontal spall repairs.
- Horizontal crack repairs.
- Cold storage repairs.
- Flooring pinhole patching.
- Concrete road repair.

Equipment

- 10 Gallon Units: Joint Filling Machine.
- Cartridges: 300×300 cartridge gun.
- Air compressor with oil separator.
- Concrete grinder with ZEC wheel.

Packaging

- 20.5 oz Cartridges, Case of 12 Item #: Cart22-850
- 10 Gallon Unit Item #: 850-10

AP NS950 EPOXY

Concrete Crack Repair

Two Component Structural Repair Epoxy

AP NS950 EPOXY is a two component, non-sag structural epoxy designed to offer exceptional mechanical strength in anchoring/bonding applications. Due to its high bond strength to concrete, it is ideal to use for anchoring threaded rod or rebar dowels. The consistency of AP NS950 EPOXY is good for capping for crack injection or general surface repairs. AP NS950 EPOXY is 100% solids, VOC free and Butyl Glycidyl Ether (BGE)* free.

Advantages

- Suitable for DOT work
- 1:1 Mix ratio
- Solvent Free
- High/Strength/Modulus
- Easy-To-Apply Paste
- Non-Sag
- ASTM C 881 Compliant

Field of Application

- Crack Surface Seal
- Anchoring
- General Purpose Concrete Repair
- Epoxy Port Placement
- Crack Filling

Equipment

1:1 Two-Component Manual Cartridge Gun Item #: ACP-2000

Packaging

- 300 x 300 ml Cartridges / Case of 12 Item #: NS950-Cart
- 2-gallon Bulk Kit (1 gallon A, and 1 gallon B). Item #: NS950-2

EPICOL INJ LV

Concrete Crack Repair

Low-Viscosity Epoxy Injection Resin for Concrete

EPICOL INJ LV is a low-viscosity epoxy resin for structural bonding of cracks and micro cracks in dry or wet concrete. Can be used as glue for bonding and anchoring.

Advantages

- Low-viscosity.
- For dry and wet applications.
- Deep penetration in micro cracks.
- Solvent-free.
- Excellent adhesion to concrete.
- Long processing time.

Field of Application

- Structural crack injection.
- Anchoring.
- Bonding agent

Equipment

Low pressure pump.

Packaging

1 Gallon Unit Item #: Epicol INJLV-1

LEAK SEAL PUMPS

Equipment & Accessories

Impact 440 Electric Injection Pump

The IMPACT 440 is an advanced electric injection pump that's ideally suited for residential, property maintenance and small commercial applications.

ADVANTAGES

- Designed to consistently handle 50-100 gallons per week.
- Recommended for small and medium residential and commercial projects.

APPLICATIONS

- Crack injection, void fill, and soil stabilization with polyurethane.
- Pre-grout injection water flush pump (water / grout pumps not to be same pump).
- Flushing Alchemy-Spetec's MixMaster slab lifting gun.

Max. Delivery:	.54 GPM
Max. Operating Pressure:	3300 PSI
Weight (skid frame):	35 lbs.
Motor:	7/8 hpDC Motor

Item #: Titan 440 - MS



Impact 640 Electric Injection Pump

The IMPACT 640 continues the climb to increased performance. This mid-range unit is perfect for residential, property maintenance, rental and light commercial applications and is equipped with digital technology for improved efficiency.

ADVANTAGES

- Features DigiTrac Integrated Digital Display that includes an anti-theft lock.
- Designed to consistently handle 75-100 gallons per week.
- Recommended for small and medium residential and commercial projects.

APPLICATIONS

- Crack injection, void fill, and soil stabilization with polyurethane.
- Pre-grout injection water flush pump (water / grout pumps not to be same pump).
- Flushing Alchemy-Spetec's MixMaster slab lifting gun.

Max. Delivery:	.70 GPM
Max. Operating Pressure:	3300 PSI
Weight (skid frame):	35 lbs.
Motor:	7/8 hpDC Motor

Item #: Titan 640 - S



LEAK SEAL PUMPS

Equipment & Accessories

PowrTwin 8900 Plus Electric Injection Pump

A step up for projects that require greater power and output, the PowrTwin 8900 Plus is our best-selling hydraulic piston pump, favored by contractors who want to complete large application jobs in record time with high profit margins.

Max. Delivery, Gas:	2.35 GPM
Max. Delivery, Electric:	1.25 GPM
Max. Operating Pressure:	3600 PSI
Engine, Gas:	200 cc HP
Motor, Electric:	2.0 HP
Weight:	155 lbs

Item #: Titan 8900



Drill Pump

The Alchemy-Spetec Drill Pump is a high pressure, single-component chemical injection pump suitable for low-mid viscosity chemical injection grouts. It's most commonly used for the application of polyurethane injection grouts. The drill-mounted design offers a convenient and portable solution for chemical injection applications.

Drill:	110v or 220v
Reservoir Capacity:	2L
Pressure Hold:	6,000psi (400bar)
Hose Set Length:	15' (5m)

Item #: AP 1C DP



Gel Pump

The Alchemy-Spetec Gel Pump is a pneumatically-operated, high pressure, stainless steel, dual-component chemical injection machine designed primarily for low viscosity polyacrylate gels and other chemical grout products.

Motor Pressure Ratio:	1:15
Operating Pressure:	0-120 bars
Mixing Ratio:	1:1
Flow Per Double Stroke:	144 ccm
Max. Flow Rate:	25 l/min.
Compressor Requirement:	480 l/min x 7 bars
Length of High-Pressure Hoses:	7,5 m
Compression Head:	3-link system
Dimensions:	W 55 cm x D 50 cm x H 100 cm
Pump Weight:	50 kg

Item #: AP 1C DP



LEAK SEAL ACCESSORIES

Equipment & Accessories

Flush Wand



Use this essential tool to flush concrete dust from the holes you have drilled for crack injection.

Item #: ACA-510

Oakum



Seals cracks and slows down gushing water during leak repair. Oakum can be used alone or in combination with Spetec PUR GT500.

5 Pound Box Item #: ACA-300

50 Pound Box Item #: ACP-1020

Coupler with Zerk Fitting

High pressure coupler for zerk fitting. Extra zerk fittings for bang in ports - Bag of 100.

Coupler Item #: ACP-400

Bag of 100 Zerks Item #: ACA-555



High Pressure Crack Injection Valve



Control resin flow at the point of injection.

Item #: ACA-500

Injection Needle

Stainless Steel Injection Needle - 1/4" x 12". For injecting behind oakum or boot seals.



Item #: ACP-2210

1:1 Two-Component Manual Cartridge Gun



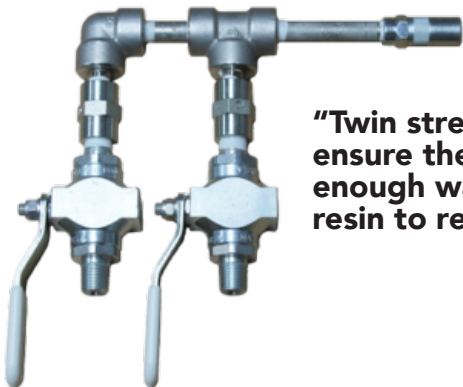
For use with low viscosity resins in dual-component cartridges, such as Spetec Boom! Seal.

Item #: ACP-2000

LEAK SEAL ACCESSORIES

Equipment & Accessories

High Pressure F-Valve Assembly



"Twin stream" to ensure there is enough water for the resin to react with.

Item #: ACA-512

Flush, Soak & Stain Preventer

Spetec Pump Cleaner

A non-flammable solvent for cleaning uncured polyurethane from injection equipment.

Item #: PumpCI-5

AP Soak 130

Cleans cured resin from metal components.

Item #: 130-1

AP Lube 190

Pump lubricant.

Item #: 190-1

Spetec Surface Guard

Prevents polyurethane stains on concrete surfaces.

Item #: Surface-5

CRACK REPAIR ACCESSORIES *Equipment & Accessories*

Joint Fill Machine

- Allows for one person operation.
- The unit comes standard with a 1:1 component ratio, but a 2:1 component ratio is available.
- Lower tanks makes filling easier.
- Dedicated storage area for generator or battery.
- Waste bucket holder for less drips on the floor.



Power Source:	1/2 HP Electric Motor
Power Requirements:	110V, 60 Hz
Other Power Options:	Gas Generator or Deep Cycle Marine Battery with Power Inverter
Frame:	Steel
Tanks:	6.5 Gallon Polyethylene
Manifold:	Re-Buildable, One-Piece, Aluminum Dispensing Manifold
Compatible Materials:	Polyurea and Epoxy Joint Fillers

MECHANICAL PACKERS



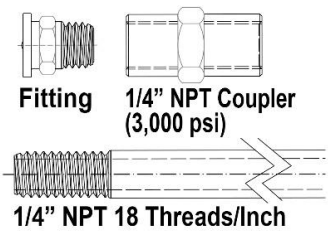
Equipment & Accessories

2017 Selection




ITEM	TYPE	PART #	DIMS	PKG.	BENEFITS / USES
	Steel	ACP-1030	1/2" x 4" 13 x 100mm	100qty	Removable anti-return valve on top allows for port-port travel technique and option of switching to buttonhead fitting (see below). Longer length more suited for poor concrete conditions causing spalls at drill hole. Suitable for PU, EP, Polyacrylate, and Silicate grouts.
	Steel	ACP-1030 w/ACP-2203	1/2" x 4" 13 x 100mm	100qty	Buttonhead top offers more secure connection and less leakage at coupler. Longer length more suited for poor concrete conditions causing spalls at drill hole. Suitable for PU, EP, Polyacrylate, and Silicate grouts.
	Steel	ACP-1040	5/8" x 4" 16 x 100mm	100qty	Removable anti-return valve on top allows for port-port travel technique and option of switching to buttonhead fitting (see below). Larger length and diameter combine benefits listed above. Suitable for PU, EP, Polyacrylate, and Silicate grouts.
	Steel	ACP-1040 w/ACP-2203	5/8" x 4" 16 x 100mm	100qty	Buttonhead top offers more secure connection and less leakage at coupler. Longer length and diameter combine benefits listed above. Suitable for PU, EP, Polyacrylate, and Silicate grouts.
	Steel	ACP-1045	5/8" x 3" 16 x 70mm	100qty	Removable anti-return valve on top allows for port-port travel technique and option of switching to buttonhead fitting (see below). High quality rubber sleeve, increased diameter, and locking washer allow for extreme pressure tolerance. Suitable for PU, EP, Polyacrylate, and Silicate
	Steel	ACP-1045 w/ACP-2203	5/8" x 3" 16 x 70mm	100qty	Buttonhead top offers more secure connection and less leakage at coupler. High quality rubber sleeve, increased diameter, and locking washer allow for extreme pressure tolerance. Suitable for PU, EP, Polyacrylate, and Silicate grouts.
	Plastic	ACA-550	3/8" x 3" 10 x 70mm	100qty	Basic plastic design with removable return-valve design offers a simple, yet functional packer solution. Suitable for lower pressure injections for PU and EP grouts.

MECHANICAL PACKERS

Equipment & Accessories

	Steel	ACP-400	Standard	Single	Standard 3-claw zerk coupler designed to work with all standard zerk valve configurations above. Steel design suitable for all grouts.
	Steel	HW-255	Standard	Single	Heavy Duty steel buttonhead coupler provides 3-sided secure connection minimizing leaks at the coupler. Great for high volume and high-pressure applications. Repair kits available for internal seals. Steel design suitable for all grouts.
 <p>Fitting 1/4" NPT Coupler (3,000 psi)</p> <p>1/4" NPT 18 Threads/Inch</p>	Steel	ACA-570	1/4" NPT	100qty	Button Head Fittings are designed for high volume flow of resin and provide a smooth working surface for easy coupler engagement & removal. They are used as a quick coupling device to connect the MixMaster injection gun to a pipe used for soil stabilization or slab lifting. It is typically used with a coupler or a bell reducer depending on the size of the pipe it is attached to.

2018 Additions (replacement style in () under ID – please ask for samples)

	Brass	ACP-2001	5/16" x 2.5" 8m x 50mm	100qty	Bottom anti-return valve allows for removal of head prior to final grout set. Small diameter ideal for PT structures and shallow drill angles. Suitable for PU, EP, and Silicate grouts.
	Steel	ACP-2002	3/8" x 2.75" 10 x 60mm	100qty	Bottom anti-return valve allows for removal of head prior to final grout set. Small diameter ideal for PT structures and shallow drill angles. Suitable for PU, EP, Polyacrylate, and Silicate grouts.
	Steel	ACP-2003	3/8" x 3" 10 x 70mm	100qty	Removable anti-return valve on top allows for port-port travel technique and option of switching to buttonhead fitting (see below). Small diameter ideal for PT structures and shallow drill angles. Suitable for PU, EP, Polyacrylate, and Silicate grouts.

MECHANICAL PACKERS

Equipment & Accessories

	Steel	ACP-2003 w/ACP-2203	3/8" x 3" 10 x 70mm	100qty	Buttonhead top offers more secure connection and less leakage at coupler. Small diameter ideal for PT structures and shallow drill angles. Suitable for PU, EP, Polyacrylate, and Silicate grouts.
	Steel	ACP-2004	3/8" x 4" 10 x 100mm	100qty	Bottom anti-return valve allows for removal of head prior to final grout set. Longer length more suited for poor concrete conditions causing spalls at drill hole. Suitable for PU, EP, Polyacrylate, and Silicate grouts.
	Steel	ACP-2005	1/2" x 3" 13 x 70mm	100qty	Bottom anti-return valve allows for removal of head prior to final grout set. Most common industry size offers benefits of adequate surface area for grip with economical price. Suitable for PU, EP, Polyacrylate, and Silicate grouts.
	Steel	ACP-2006	1/2" x 3" 13 x 70mm	100qty	Removable anti-return valve on top allows for port-port travel technique and option of switching to buttonhead fitting (see below). Most common industry size offers benefits of adequate surface area for grip with economical price. Suitable for PU, EP, Polyacrylate, and Silicate grouts.
	Steel	ACP-2006 w/ACP-2203	1/2" x 3" 13 x 70mm	100qty	Buttonhead top offers more secure connection and less leakage at coupler. Most common industry size offers benefits of adequate surface area for grip with economical price. Suitable for PU, EP, Polyacrylate, and Silicate grouts.
	Zinc	ACP-2007	1/2" x 3" 13 x 70mm	100qty	Bottom anti-return valve allows for removal of head prior to final grout set. Zinc type offers even more economical option to most common industry size. Suitable for PU, EP, and Silicate grouts
	Steel	ACP-2008	1/2" x 4" 13 x 100mm	100qty	Bottom anti-return valve allows for removal of head prior to final grout set. Longer length more suited for poor concrete conditions causing spalls at drill hole. Suitable for PU, EP, Polyacrylate, and Silicate grouts.

MECHANICAL PACKERS

Equipment & Accessories

	Steel	ACP-2009 (ACP-1030)	1/2" x 4" 13 x 100mm	100qty	Removable anti-return valve on top allows for port-port travel technique and option of switching to buttonhead fitting (see below). Longer length more suited for poor concrete conditions causing spalls at drill hole. Suitable for PU, EP, Polyacrylate, and Silicate grouts.
	Steel	ACP-2009 w/ACP-2203 (ACP-1030 w/ACP-2203)	1/2" x 4" 13 x 100mm	100qty	Buttonhead top offers more secure connection and less leakage at coupler. Longer length more suited for poor concrete conditions causing spalls at drill hole. Suitable for PU, EP, Polyacrylate, and Silicate grouts.
	Alum.	ACP-2010	1/2" x 4" 13 x 100mm	100qty	Conveniently sized dimensions coupled with ultra-economical aluminum design provides a great low-end option for general chemical injection. Suitable for PU, EP, and Silicate grouts.
	Steel	ACP-2011	1/2" x 6" 13mm x 175mm	100qty	Removable anti-return valve on top allows for port-port travel technique and option of switching to buttonhead fitting (see below). Longer length more suited for poor concrete conditions causing spalls at drill hole. Suitable for PU, EP, Polyacrylate, and Silicate grouts.
	Steel	ACP-2011 w/ACP-2203	1/2" x 6" 13mm x 175mm	100qty	Buttonhead top offers more secure connection and less leakage at coupler. Longer length more suited for poor concrete conditions causing spalls at drill hole. Suitable for PU, EP, Polyacrylate, and Silicate grouts.
	Steel	ACP-2012	5/8" x 3" 16 x 70mm	100qty	Removable anti-return valve on top allows for port-port travel technique and option of switching to buttonhead fitting (see below). Larger diameter provides more surface area in hole for increased pressure tolerance. Suitable for PU, EP, Polyacrylate, and Silicate grouts.
	Steel	ACP-2012 w/ACP-2203	5/8" x 3" 16 x 70mm	100qty	Buttonhead top offers more secure connection and less leakage at coupler. Larger diameter provides more surface area in hole for increased pressure tolerance. Suitable for PU, EP, Polyacrylate, and Silicate grouts.

MECHANICAL PACKERS

Equipment & Accessories

	Steel	ACP-2013 (ACP-1040)	5/8" x 4" 16 x 100mm	100qty	Removable anti-return valve on top allows for port-port travel technique and option of switching to buttonhead fitting (see below). Larger length and diameter combine benefits listed above. Suitable for PU, EP, Polyacrylate, and Silicate grouts.
	Steel	ACP-2013 w/ACP-2203 (ACP-1040 w/ACP-2203)	5/8" x 4" 16 x 100mm	100qty	Buttonhead top offers more secure connection and less leakage at coupler. Longer length and diameter combine benefits listed above. Suitable for PU, EP, Polyacrylate, and Silicate grouts.
	Steel	ACP-2014	1/2" x 3" 13 x 70mm	100qty	Removable anti-return valve on top allows for port-port travel technique and option of switching to buttonhead fitting (see below). High quality rubber sleeve and locking washer allow for extreme pressure tolerance. Suitable for PU, EP, Polyacrylate, and Silicate grouts.
	Steel	ACP-2014 w/ACP-2203	1/2" x 3" 13 x 70mm	100qty	Buttonhead top offers more secure connection and less leakage at coupler. High quality rubber sleeve and locking washer allow for extreme pressure tolerance. Suitable for PU, EP, Polyacrylate, and Silicate grouts.
	Steel	ACP-2015	5/8" x 3" 16 x 70mm	100qty	Bottom anti-return valve allows for removal of head prior to final grout set. Most common industry size offers benefits of adequate surface area for grip with economical price. Suitable for PU, EP, Polyacrylate, and Silicate grouts.
	Plastic	ACP-2102	5/8" x 4" 16 x 100mm	100qty	Removable, pre-placed sleeve provides grip for threaded plastic packer. Free-floating ball allows for high volume applications typical in 2-part foam applications. Buttonhead top provides secure connection for minimal leakage. Suitable for PU grouts.
	Steel	ACP-2204	Standard	Single	Steel buttonhead coupler provides 3-sided secure connection minimizing leaks at the coupler. Great for overhead and high-pressure applications. Repair kits available for internal seals. Steel design suitable for all grouts.

MECHANICAL PACKERS

Equipment & Accessories

	Steel	ACP-2201 (ACP-400)	Standard	Single	Standard 4-claw zerk coupler designed to work with all standard zerk valve configurations above. Steel design suitable for all grouts.
	Steel	ACP-2203	Standard	Single	Steel buttonhead fitting purchased separately for all configurations of buttonhead packers listed in brochure. Internal anti-return valve. Suitable for all grouts. Ideal for overhead and high-pressure applications.
	Steel	ACP-2202	Standard	Single	Standard ISO standard zerk valve. Internal anti-return valve. Suitable for interchangeable buttonhead and zerk functionality for all packers listed above with BH option. This is the item for extra zerk stock orders.
	Steel	ACA-555	Long	Single	Long thread ISO standard zerk valve. Internal anti-return valve. Suitable for the ACA-550 3/8" hammer-in plastic port and for ACA- 2103 5/8" plastic port.
	Steel	F-ASSEM	Standard	Single	F-assembly for 2-part chemical injection, or water flushing. Ideal for water metering, flushing, and simultaneous delivery for 2-part applications, including water as the second component. A must-have for experienced injection contractors.
	Steel	ACP-2210	1/4" x 12"	Single	1/4" OD stainless steel injection needle used for puncture point grouting through Oakum, backer rod or to set specific depth of injection point.



This information is provided in good faith, but without guarantee. The application, use and processing of the products are beyond our control and therefore your entire responsibility. Should Alchemy-Spetec nevertheless be held liable for any damage, such liability will be limited to the value of the goods delivered by us. We are committed to providing high-quality goods at all times. This version supersedes all previous versions.
Revision Date: September 26, 2019 10:21 am